



34650 US Highway 19 North, Palm Harbor, Florida

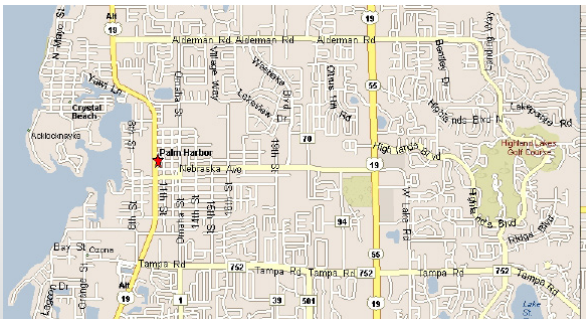
Three-story professional office building with highly visible marquis signage on US Highway 19 North

BUILDING SPECIFICATIONS

Property ID	14663157 & 18467487
Property Type	Office
Lease/For Sale	Lease
Building, Sq. Ft.	44,521 SF
Year Built	1984
Acres	3.29

PROPERTY HIGHLIGHTS

- Bank Space Available
- 4.00/1000 SF Parking Ratio
- Three-Story Professional Office Building
- Excellent U.S. Highway 19 Location in Palm Harbor
- Highly Visible Marquis Signage on Highway 19

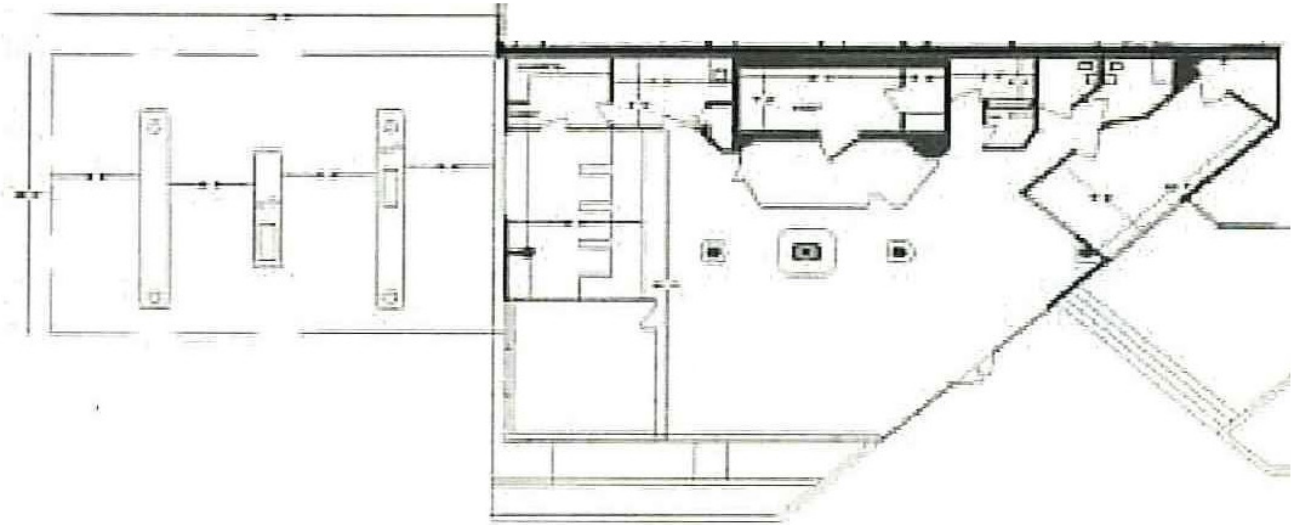


ASSIGNED AGENTS

Bob Donnelly | rdonnelly@thekraussorg.com
 Office: (813) 885-5656
 Cell: (813) 758-2312

Larry Brown | lbrown@thekraussorg.com
 Office: (813) 885-5656
 Cell: (813) 787-9637

FLOORPLAN



NOTICE TO BROKERS AND PROSPECTIVE PURCHASERS/TENANTS: THE MATERIAL CONTAINED IN THIS OFFERING IS FURNISHED SOLELY FOR THE PURPOSE OF YOUR CONSIDERATION TO PURCHASE/LEASE THE PROPERTY CONTAINED HEREIN, AND IS NOT TO BE USED FOR ANY OTHER PURPOSE WITHOUT THE EXPRESS WRITTEN CONSENT OF THE KRAUSS ORGANIZATION OR THE OWNER. THE MATERIAL IS BASED ON INFORMATION OBTAINED BY OWNER AND ON INFORMATION OBTAINED BY THE KRAUSS ORGANIZATION FROM SOURCES THEY DEEM RELIABLE. THIS IS A SUMMARY OF PERTINENT FACTS ON THE PROPERTY AND IS NOT INTENDED TO CONTAIN ALL OF THE INFORMATION DESIRED BY A PR1 DOSPECTIVE PURCHASER/TENANT. PROSPECTIVE PURCHASERS/TENANTS SHOULD MAKE THEIR OWN INVESTIGATION AND CONCLUSIONS WITHOUT RELIANCE UPON THE MATERIAL CONTAINED HEREIN. NEITHER OWNER NOR THE KRAUSS ORGANIZATION, NOR ANY OF THEIR OFFICERS, EMPLOYEES OR AGENTS MAKE ANY REPRESENTATION OR WARRANTY EXPRESSED OR IMPLIED AS TO THE ACCURACY OR COMPLETENESS OF THIS OFFERING.