

For Sale or Lease
±24,950 SF Commercial Property on Grand

7829-39 W. Grand Ave.
Elmwood Park, IL 60707



Take advantage of this rare opportunity to acquire a large corner commercial property along Grand Avenue in Elmwood Park. Property is zoned commercial with a large storefront and warehouse spaces. Great opportunity for dealership, automotive repair or other retail use.

East Unit (±16,950 SF)

Retail/office showroom area and warehouse section.

West Unit (±8,000 SF)

Warehouse and Office unit. Available for Demo to add parking.

SALE PRICE:	\$1,679,000
LEASE PRICE:	\$12 PSF, Modified Gross
BUILDING SIZE:	±24,950 SF (Divisible to ±8,000 SF)
CLEAR HEIGHT:	15' to Deck 26' to middle of Barrel Truss
DRIVE-IN DOORS:	5
ZONING:	C1
PARKING:	Street parking in front and side streets
TAXES (2023):	\$90,751.09
PINs:	12-25-321-(004 through 009)-0000

CONTACT

MJ Weinberger
773 736 3600 Office
847 334 2587 Mobile
mj@straussrealty.com

STRAUSS
REALTY, LTD.

7829-39 W. Grand Ave. Elmwood Park, IL 60707

PHOTOS



CONTACT

MJ Weinberger
773 736 3600 Office
847 334 2587 Mobile
mj@straussrealty.com

STRAUSS
REALTY, LTD.

LOCATION

7829-39 W. Grand Ave. Elmwood Park, IL 60707



- Great downtown location in Elmwood Park.
- In between two Metra stations on the MD-W line, each a 10 minute walk away.
- Traffic Count: Grand Avenue sees 16,200 vehicles per day.

DEMOGRAPHICS (2024)



1 Mile:	36,350
2 Miles:	120,666
3 Miles:	263,814



1 Mile:	13,432
2 Miles:	42,453
3 Miles:	95,575



1 Mile:	\$91,954
2 Miles:	\$99,203
3 Miles:	\$97,050



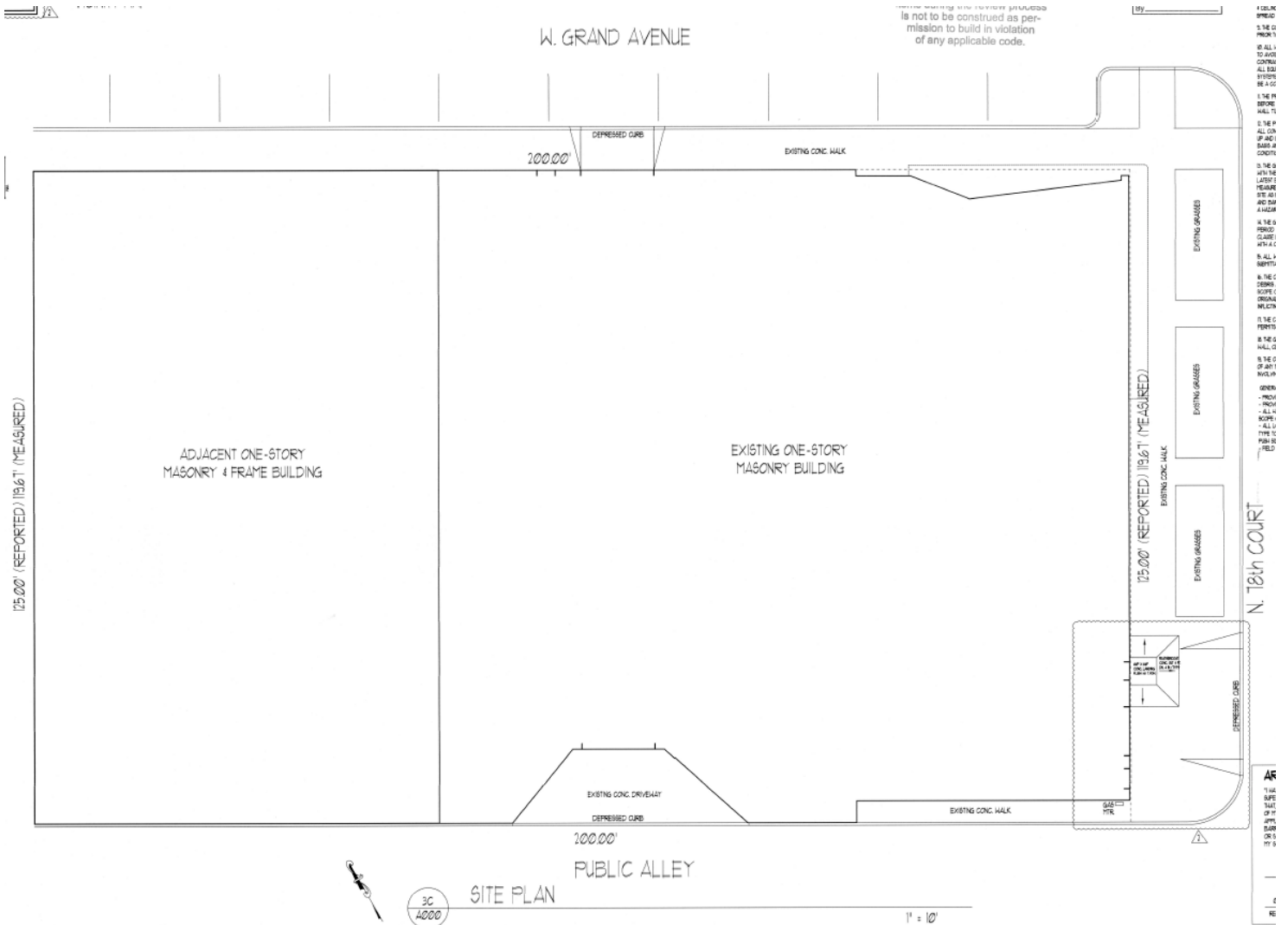
CONTACT

MJ Weinberger
773 736 3600 Office
847 334 2587 Mobile
mj@straussrealty.com

STRAUSS
REALTY, LTD.

FLOOR PLAN

This floor plan is a portion of the property— the two buildings nearest to the corner of Grand & 78th.



CONTACT

MJ Weinberger
773 736 3600 Office
847 334 2587 Mobile
mj@straussrealty.com