



Property Name: South Torrance Business Park
Address: 23840-23870 Madison St, Torrance, CA 90505
Cross Streets: Madison St/Skypark Dr

Two Free Standing Flex/Industrial Bldgs
 Building A: 12,386 SF of Well Appointed, 2-Story Office Space
 Building B: 10,584 SF Industrial Warehouse, 6 GL Doors
 Warehouse (Bldg B) Direct Access to Torrance Airport via 4 GL
 52 Parking Spaces Available in Lot to the North (Owned by City)

Lease Rate/Mo:	TBD	Sprinklered:	No	Office SF / #:	12,386 SF
Lease Rate/SF:	TBD	Clear Height:	8'-16'	Restrooms:	7
Lease Type:	Net	GL Doors/Dim:	7	Office HVAC:	Heat & AC
Available SF:	27,991 SF	DH Doors/Dim:	0	Finished Ofc Mezz:	6,193 SF
Minimum SF:	27,991 SF	A: 1200 V: 400 O: 3 W: 4		Include In Available:	Yes
Prop Lot Size:	1.07 Ac / 46,435 SF	Construction Type:	Concrete	Unfinished Mezz:	0 SF
Term:	Acceptable to Owner	Const Status/Year Blt:	Existing / 1976R10	Include In Available:	No
Sale Price:	\$7,950,000.00	Whse HVAC:	No	Possession:	30 Days
Sale Price/SF:	\$284.02	Parking Spaces: 86	/ Ratio: 3.1:1/	Vacant:	Yes
Taxes:		Rail Service:	No	To Show:	Call broker
Yard:	No	Specific Use:	Flex/R&D	Market/Submarket:	Torrance
Zoning:	H-MP			APN#:	7377-010-001

Listing Company: The Klabin Company
Agents: [Tyler Rollema 310-329-9000](mailto:Tyler.Rollema@klabin.com)

Listing #: 42497606

Listing Date: 05/01/2025

FTCF: CB250N000S250/A0AA

Notes: Building A includes a well appointed 2-story office (12,386 SF) with 5,021 SF of potential warehouse space in balance of building. Building B to be fully refurbished. Co-listed with AIR CRE NonMember Warren Noack. Buyer to verify all information contained herein.



This information supplied herein is from sources we deem reliable. It is provided without any representation, warranty or guarantee, expressed or implied as to its accuracy. Prospective Buyer or Tenant should conduct an independent investigation and verification of all matters deemed to be material, including, but not limited to, statements of income and expenses. Consult your attorney, accountant, or other prof. advisor.



KLABIN.COM

19700 S. VERMONT AVENUE, SUITE 100

TORRANCE, CA 90502

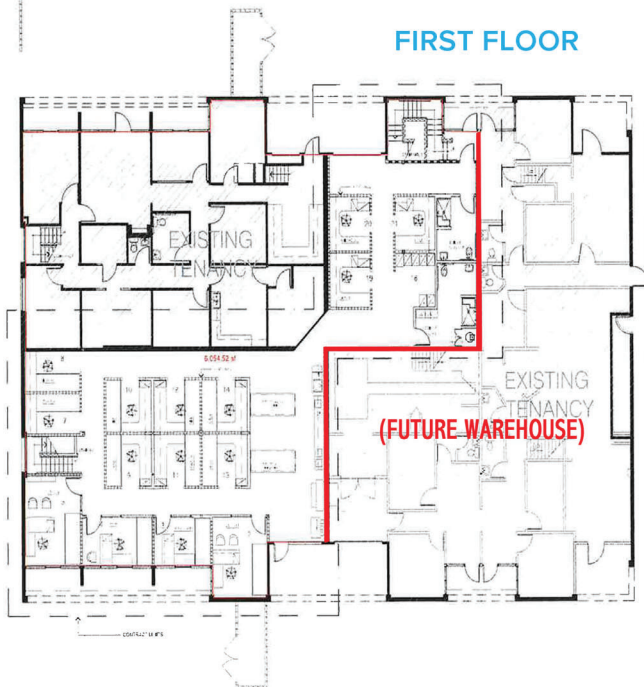
DRE 00824993

310.329.9000



INDUSTRIAL PROPERTY FOR LEASE & SALE

FIRST FLOOR



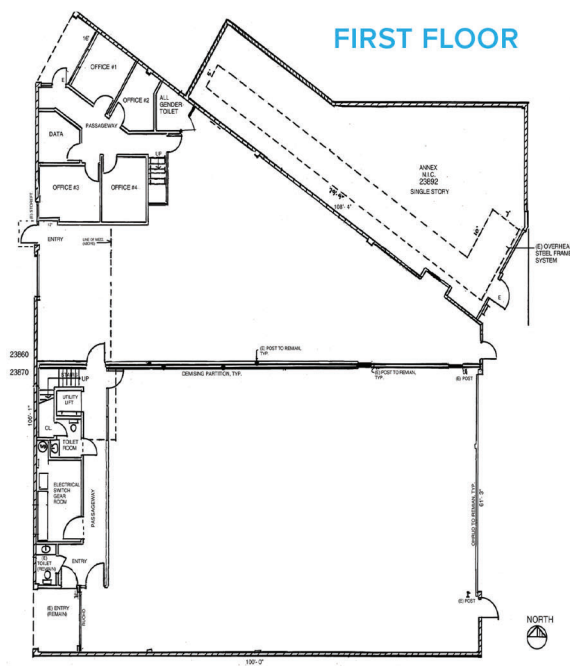
The floor plan illustrates the layout of the proposed warehouse facility. It is divided into several sections, with a large area designated as 'EXISTING TENANCY' and another area designated as '(FUTURE WAREHOUSE) TENANCY'. The plan includes various rooms, corridors, and service areas, with dimensions provided for several key sections. A red line indicates the boundary between the existing tenancy and the future warehouse space.

Key areas and dimensions shown on the plan include:

- EXISTING TENANCY (Top Left): 3,651 sq. ft.
- EXISTING TENANCY (Middle Left): 3,700 sq. ft.
- EXISTING TENANCY (Bottom Left): 3,700 sq. ft.
- (FUTURE WAREHOUSE) TENANCY (Bottom Right): 3,700 sq. ft.

The plan also shows various rooms, corridors, and service areas, with dimensions provided for several key sections. A red line indicates the boundary between the existing tenancy and the future warehouse space.

FIRST FLOOR



Architectural floor plan of the second floor of the New York Public Library. The plan shows a large central hall (B) with a sloped roof, surrounded by various rooms including offices, a mezzanine, a utility room, a rest room, a bathroom, and a stairwell. A north arrow is located in the bottom right corner.

Key features and labels include:

- ROOMS:** OFFICE, PASSAGEWAY, UTILITY, MEZZANINE, REST ROOM, BATH, STAIR, ELEVATOR, LOBBY, READING ROOM, STUDY, and various numbered rooms (e.g., 2000, 2001, 2002, 2003, 2004, 2005, 2006, 2007, 2008, 2009, 2010, 2011, 2012, 2013, 2014, 2015, 2016, 2017, 2018, 2019, 2020, 2021, 2022, 2023, 2024, 2025, 2026, 2027, 2028, 2029, 2030, 2031, 2032, 2033, 2034, 2035, 2036, 2037, 2038, 2039, 2040, 2041, 2042, 2043, 2044, 2045, 2046, 2047, 2048, 2049, 2050, 2051, 2052, 2053, 2054, 2055, 2056, 2057, 2058, 2059, 2060, 2061, 2062, 2063, 2064, 2065, 2066, 2067, 2068, 2069, 2070, 2071, 2072, 2073, 2074, 2075, 2076, 2077, 2078, 2079, 2080, 2081, 2082, 2083, 2084, 2085, 2086, 2087, 2088, 2089, 2090, 2091, 2092, 2093, 2094, 2095, 2096, 2097, 2098, 2099, 2100, 2101, 2102, 2103, 2104, 2105, 2106, 2107, 2108, 2109, 2110, 2111, 2112, 2113, 2114, 2115, 2116, 2117, 2118, 2119, 2120, 2121, 2122, 2123, 2124, 2125, 2126, 2127, 2128, 2129, 2130, 2131, 2132, 2133, 2134, 2135, 2136, 2137, 2138, 2139, 2140, 2141, 2142, 2143, 2144, 2145, 2146, 2147, 2148, 2149, 2150, 2151, 2152, 2153, 2154, 2155, 2156, 2157, 2158, 2159, 2160, 2161, 2162, 2163, 2164, 2165, 2166, 2167, 2168, 2169, 2170, 2171, 2172, 2173, 2174, 2175, 2176, 2177, 2178, 2179, 2180, 2181, 2182, 2183, 2184, 2185, 2186, 2187, 2188, 2189, 2190, 2191, 2192, 2193, 2194, 2195, 2196, 2197, 2198, 2199, 2200, 2201, 2202, 2203, 2204, 2205, 2206, 2207, 2208, 2209, 2210, 2211, 2212, 2213, 2214, 2215, 2216, 2217, 2218, 2219, 2220, 2221, 2222, 2223, 2224, 2225, 2226, 2227, 2228, 2229, 2230, 2231, 2232, 2233, 2234, 2235, 2236, 2237, 2238, 2239, 2240, 2241, 2242, 2243, 2244, 2245, 2246, 2247, 2248, 2249, 2250, 2251, 2252, 2253, 2254, 2255, 2256, 2257, 2258, 2259, 2260, 2261, 2262, 2263, 2264, 2265, 2266, 2267, 2268, 2269, 2270, 2271, 2272, 2273, 2274, 2275, 2276, 2277, 2278, 2279, 2280, 2281, 2282, 2283, 2284, 2285, 2286, 2287, 2288, 2289, 2290, 2291, 2292, 2293, 2294, 2295, 2296, 2297, 2298, 2299, 2300, 2301, 2302, 2303, 2304, 2305, 2306, 2307, 2308, 2309, 2310, 2311, 2312, 2313, 2314, 2315, 2316, 2317, 2318, 2319, 2320, 2321, 2322, 2323, 2324, 2325, 2326, 2327, 2328, 2329, 2330, 2331, 2332, 2333, 2334, 2335, 2336, 2337, 2338, 2339, 2340, 2341, 2342, 2343, 2344, 2345, 2346, 2347, 2348, 2349, 2350, 2351, 2352, 2353, 2354, 2355, 2356, 2357, 2358, 2359, 2360, 2361, 2362, 2363, 2364, 2365, 2366, 2367, 2368, 2369, 2370, 2371, 2372, 2373, 2374, 2375, 2376, 2377, 2378, 2379, 2380, 2381, 2382, 2383, 2384, 2385, 2386, 2387, 2388, 2389, 2390, 2391, 2392, 2393, 2394, 2395, 2396, 2397, 2398, 2399, 2400, 2401, 2402, 2403, 2404, 2405, 2406, 2407, 2408, 2409, 2410, 2411, 2412, 2413, 2414, 2415, 2416, 2417, 2418, 2419, 2420, 2421, 2422, 2423, 2424, 2425, 2426, 2427, 2428, 2429, 2430, 2431, 2432, 2433, 2434, 2435, 2436, 2437, 2438, 2439, 2440, 2441, 2442, 2443, 2444, 2445, 2446, 2447, 2448, 2449, 2450, 2451, 2452, 2453, 2454, 2455, 2456, 2457, 2458, 2459, 2460, 2461, 2462, 2463, 2464, 2465, 2466, 2467, 2468, 2469, 2470, 2471, 2472, 2473, 2474, 2475, 2476, 2477, 2478, 2479, 2480, 2481, 2482, 2483, 2484, 2485, 2486, 2487, 2488, 2489, 2490, 2491, 2492, 2493, 2494, 2495, 2496, 2497, 2498, 2499, 2500, 2501, 2502, 2503, 2504, 2505, 2506, 2507, 2508, 2509, 2510, 2511, 2512, 2513, 2514, 2515, 2516, 2517, 2518, 2519, 2520, 2521, 2522, 2523, 2524, 2525, 2526, 2527, 2528, 2529, 2530, 2531, 2532, 2533, 2534, 2535, 2536, 2537, 2538, 2539, 2540, 2541, 2542, 2543, 2544, 2545, 2546, 2547, 2548, 2549, 2550, 2551, 2552, 2553, 2554, 2555, 2556, 2557, 2558, 2559, 2560, 2561, 2562, 2563, 2564, 2565, 2566, 2567, 2568, 2569, 2570, 2571, 2572, 2573, 2574, 2575, 2576, 2577, 2578, 2579, 2580, 2581, 2582, 2583, 2584, 2585, 2586, 2587, 2588, 2589, 2590, 2591, 2592, 2593, 2594, 2595, 2596, 2597, 2598, 2599, 2600, 2601, 2602, 2603, 2604, 2605, 2606, 2607, 2608, 2609, 2610, 2611, 2612, 2613, 2614, 2615, 2616, 2617, 2618, 2619, 2620, 2621, 2622, 2623, 2624, 2625, 2626, 2627, 2628, 2629, 2630, 2631, 2632, 2633, 2634, 2635, 2636, 2637, 2638, 2639, 2640, 2641, 2642, 2643, 2644, 264