



Prime Industrial Space in the Heart of Lihue

Alika Cosner (S), SIOR

Senior Vice President
Industrial and Investment
Services Division
Lic# RS-69441
808 292 4599
alika.cosner@colliers.com

Patrick McGranahan (S)

Senior Associate
Industrial Services Division
Lic# RS-83939
808 754 8535
patrick.mcgranahan@colliers.com

220 S. King Street, Suite 1800
Honolulu, Hawaii 96813
808 524 2666
colliers.com

3116 Hoolako Street Lihue, HI 96766

Position your business for success with this rare warehouse offering in the Lihue industrial corridor. Located at 3116 Hoolako Street, this 8,429 square foot space provides the ideal combination of accessibility, functionality, and convenience for a wide range of industrial, distribution, and logistics operations.

Just minutes from Lihue Airport and Nawiliwili Harbor, the property is strategically positioned to support efficient inter-island and global transportation. Whether you're servicing local markets or managing freight across the Pacific, this location offers unparalleled connectivity.

Ideal For:

- Logistics & Freight Operators
- Construction or Service Businesses
- Light Manufacturing
- Equipment Storage & Distribution
- Parking & staging in front of at grade roll up doors

Copyright © 2025 Colliers International. Information herein has been obtained from sources deemed reliable, however its accuracy cannot be guaranteed. The user is required to conduct their own due diligence and verification.

For Lease

Contact Us:

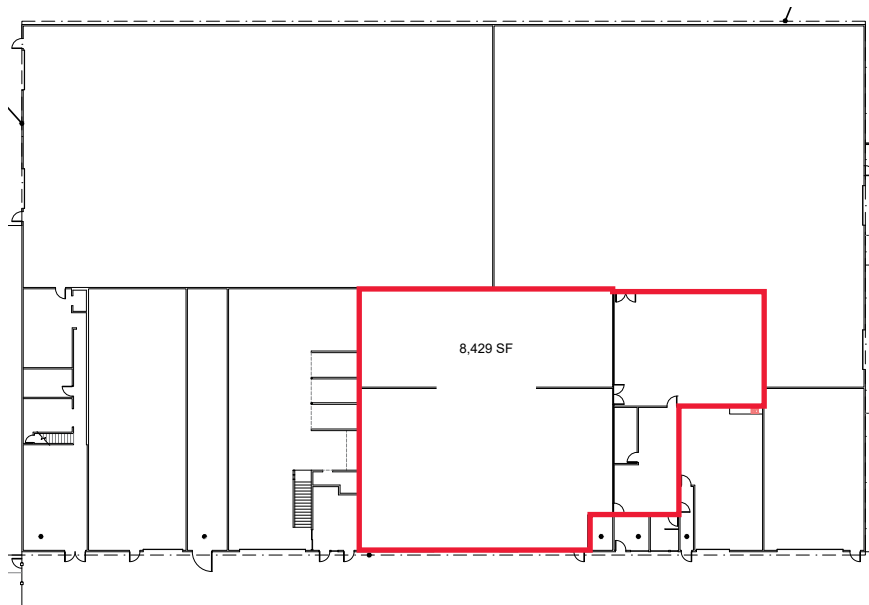
Alika Cosner (S), SIOR

Senior Vice President
Industrial and Investment
Services Division
Lic# RS-69441
808 292 4599
alika.cosner@colliers.com

Patrick McGranahan (S)

Senior Associate
Industrial Services Division
Lic# RS-83939
808 754 8535
patrick.mcgranahan@colliers.com

Area	Lihue
TMK:	(4) 3-6-12-10 (portion of)
Address:	3116 Hoolako Street, Lihue, HI 96766
Zoning:	I-L (Limited Industrial)
Available Space:	Unit E (8,429 SF) - Two (2) grade level roll-up doors. Available 11/1/25.
Base Rent:	\$1.55 PSF/Mo.
Operating Expenses:	\$0.30 PSF/Mo.
Term:	3 - 5 Years



220 S. King Street, Suite 1800
Honolulu, Hawaii 96813
808 524 2666
colliers.com

