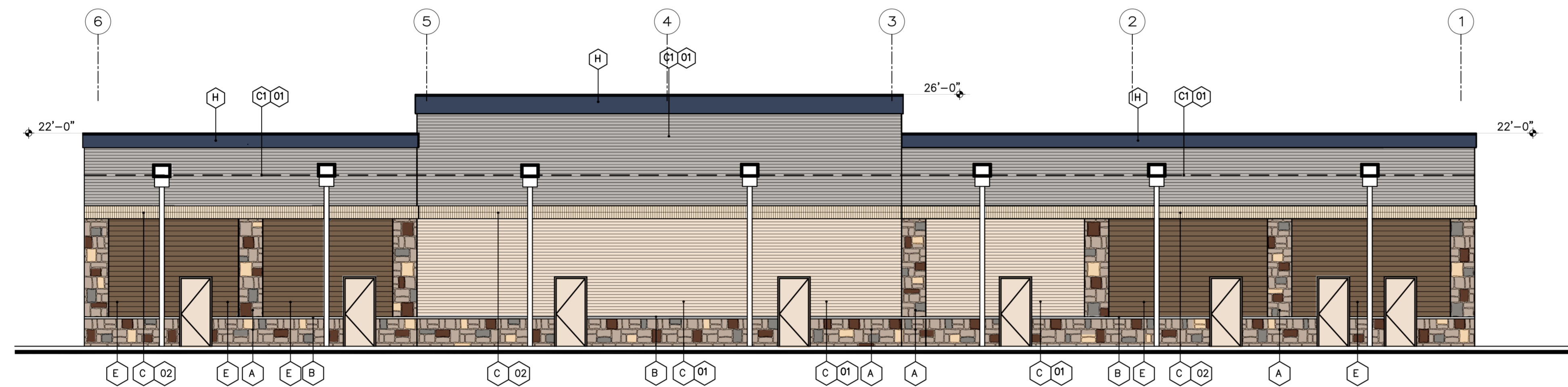
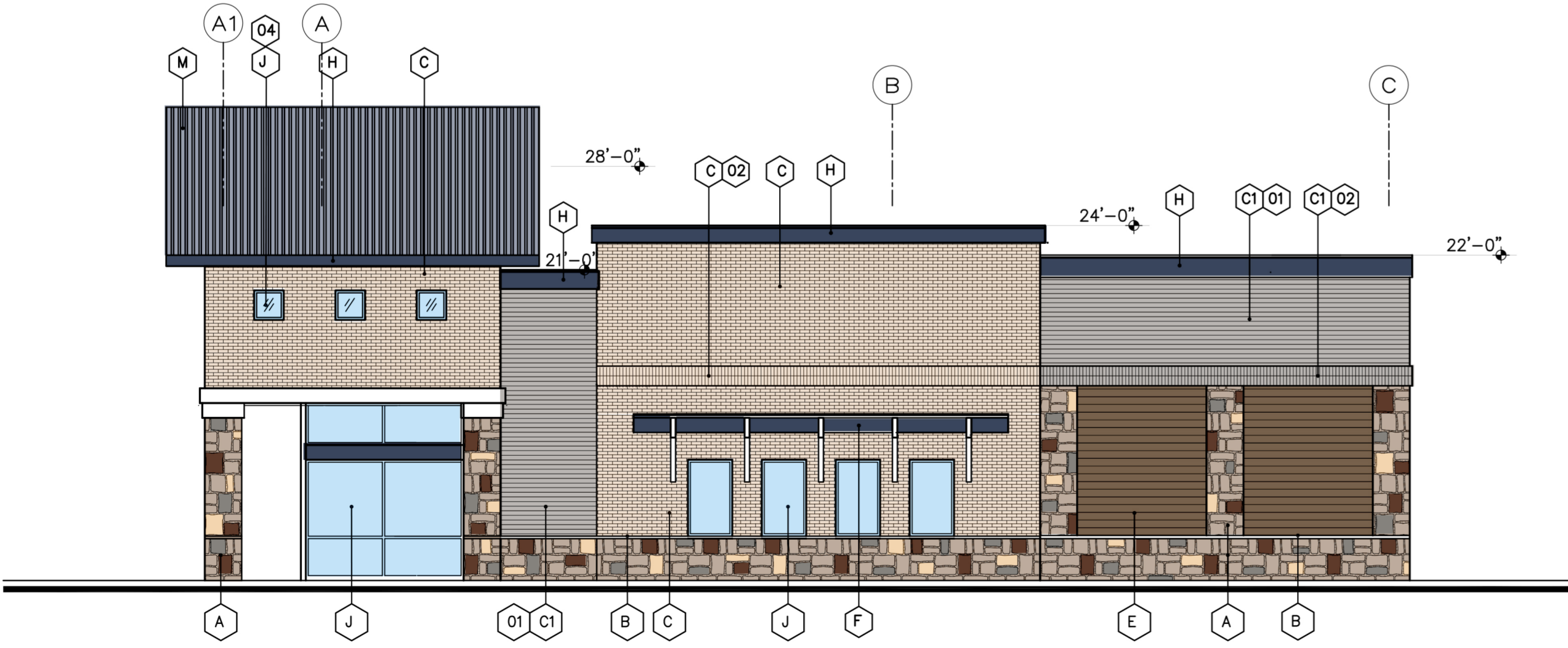




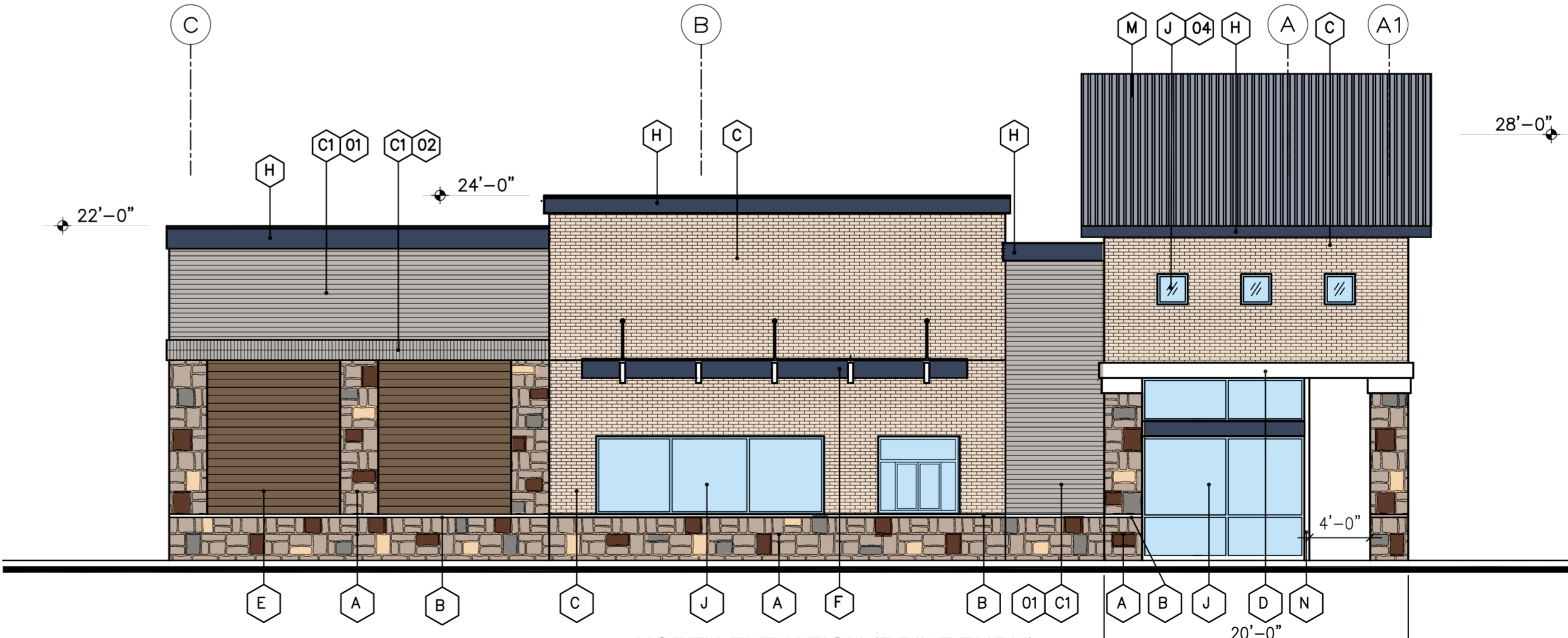
1 FRONT WEST ELEVATION
 SCALE: 1/8"=1'-0"



4 REAR SOUTH ELEVATION
 SCALE: 1/8"=1'-0"



3 SOUTH ELEVATION
 SCALE: 1/8"=1'-0"



2 NORTH ELEVATION (DRIVE THRU)
 SCALE: 1/8"=1'-0"

EXTERIOR FINISH SCHEDULE

LEUDERS STONE (NATURAL STONE)	A	3-1/2" THICK NATURAL STONE BY ACME: LEUDERS STONE-TUSCAN-BLUE (USE LARGE SIZE STONE & NO WHITE COLOR IN THE MIX)
3" CAST STONE TRIM	B	COLOR: LIME STONE WHITE
FACE BRICK	C	ACME FACE BRICK, MODULAR SIZE, GLACIER WHITE/BEIGE, VELOUR TEXTURE.
	C1	ACME FACE BRICK, MODULAR SIZE, SLATE GRAY, VELOUR TEXTURE.
3-COAT STUCCO SYSTEM W/ 3/4"V-EXP. JOINT OR ARCH. SCORED PATTERN.	D	3-COAT STUCCO SYSTEM COLOR & TEXTURE: OMEGA MILKY QUARTZ (WHITE)
PREFINISHED FIBRE CEMENT SIDING- 1X6 SHIPLAP	E	COLOR: "WOODY BROWN" OR TO BE APPROVED BY OWNER
METAL CANOPY W/ 2X12 STL. RAFTER & STL. SUSP. ROD	F	COLOR: METAL CANOPY BLUISH BLACK. STL. RAFTER BRUSH CHROME FINISH.
3X6 STL. TUBE BRACKET	F1	COLOR: BRUSH CHROME FINISH
PREFINISHED METAL PANEL	G	COLOR: NAVY
PREFINISHED METAL FACIA	H	COLOR: BLUISH BLACK
ANNODISED ALUM. STOREFRONT/ ENTRY DOORS & WINDOW SYSTEM W/ 1" CLEAR INSULATED GLASS.	J	ALUM. FRAME: "DARK BRONZE" GLASS: "CLEAR"
EXTERIOR HOLLOW METAL DOOR & FRAME	K	PREFINISHED OR GALVANISED PAINTED TO MATCH ADJACENT
ROOF SCUPPER, DOWNSPOUTS	L	PREFINISHED OR GALVANISED PAINTED TO MATCH ADJACENT
STANDING SEAM METAL ROOF	M	COLOR: BLACK
4" STL COLUMN WRAP W/ BREAK METAL TO MATCH STOREFRONT	N	COLOR: DARK BRONZE

- 01 BRICK STACK BOND WITH MATCHING GROUT COLOR.
- 02 BRICK SOLDIERS
- 03 ELEVATION BEYOND
- 04 SPRANDREL GLASS
- 05 ROOF LINE PARAPET FOR MECH. SCREENING
- 06 ROOF LINE W/ 5'-6" MIN. PARAPET FOR MECH. SCREENING
- 07 1/2" MATERIAL EXP. JOINT W/ SEALANT
- 08 ATTIC VENT W/ SCREEN COLOR: BLUISH BLACK

EXTERIOR FINISH SCHEDULE

- A NATURAL STONE 3-1/2" THICK NATURAL STONE BY ACME: LEUDERS STONE-TUSCAN-BLUE (USE LARGE SIZE STONE & NO WHITE COLOR IN THE MIX)
- B CAST STONE BAND: COLOR: WHITE LIMESTONE OR APPROVED EQUAL.
- C FACE BRICK ACME BRICK, MODULAR SIZE, GLACIER WHITE, VELOUR TEXTURE OR APPROVED EQUAL.
- C1 FACE BRICK ACME BRICK, MODULAR SIZE, SLATE GRAY, VELOUR TEXTURE OR APPROVED EQUAL.
- D 3-COAT STUCCO SYSTEM COLOR & TEXTURE: OMEGA MILKY QUARTZ (WHITE) OR APPROVED EQUAL.
- E 3-COAT STUCCO SYSTEM W/ 3/4"V-EXP. JOINT. COLOR: "WOODY BROWN" OR APPROVED EQUAL.

A Development of

PROPOSED RETAIL & RESTAURANT DEVELOPMENT
 MAIN STREET & US 380
 PROVIDENCE VILLAGE TX 76227

REVISIONS:
 REVISED PER CITY COMMENTS.
 2-8-2025

EXTERIOR BLDG. ELEVATIONS