



# NORTHPORT BUSINESS CENTER

1520 North Hearne Avenue, Shreveport, LA 71107

- Spaces available for both Industrial/Warehouse and Office/Service/Distribution users
- Each suite has a minimum of one overhead door
- Ceiling height for racking up to 18+ feet
- Three suites available from 2,795 to 3,621 sq.ft.
- Landlord can build out to meet tenant's requirements
- Location provides ease of access to the entire Shreveport-Bossier area and:
  - Via Hwy. 1, to North Shreveport/Blanchard
  - Via Inner Loop to Bossier and I-20 West to Bossier
  - Via Clyde Fant Parkway to both downtown areas, and South Shreveport/Bossier
  - 1.2 miles from new Amazon Robotics Facility



For more information, contact:

**Michele Sauls, Associate Broker | 318.222.2244 | [msauls@vintage Realty.com](mailto:msauls@vintage Realty.com)**

ALL INFORMATION CONTAINED HEREIN IS BELIEVED TO BE ACCURATE, BUT IS NOT WARRANTED AND NO LIABILITY OF ERRORS OR OMISSIONS IS ASSURED BY EITHER THE PROPERTY OWNER OR VINTAGE REALTY COMPANY OR ITS AGENTS AND EMPLOYEES. PRICES AS STATED HEREIN AND PRODUCT AVAILABILITY IS SUBJECT TO CHANGE AND/OR SALE OR LEASE WITHOUT PRIOR NOTICE, AND ALL SIZES AND DIMENSIONS ARE SUBJECT TO CORRECTION. REV 9/2024



## SITE PLAN

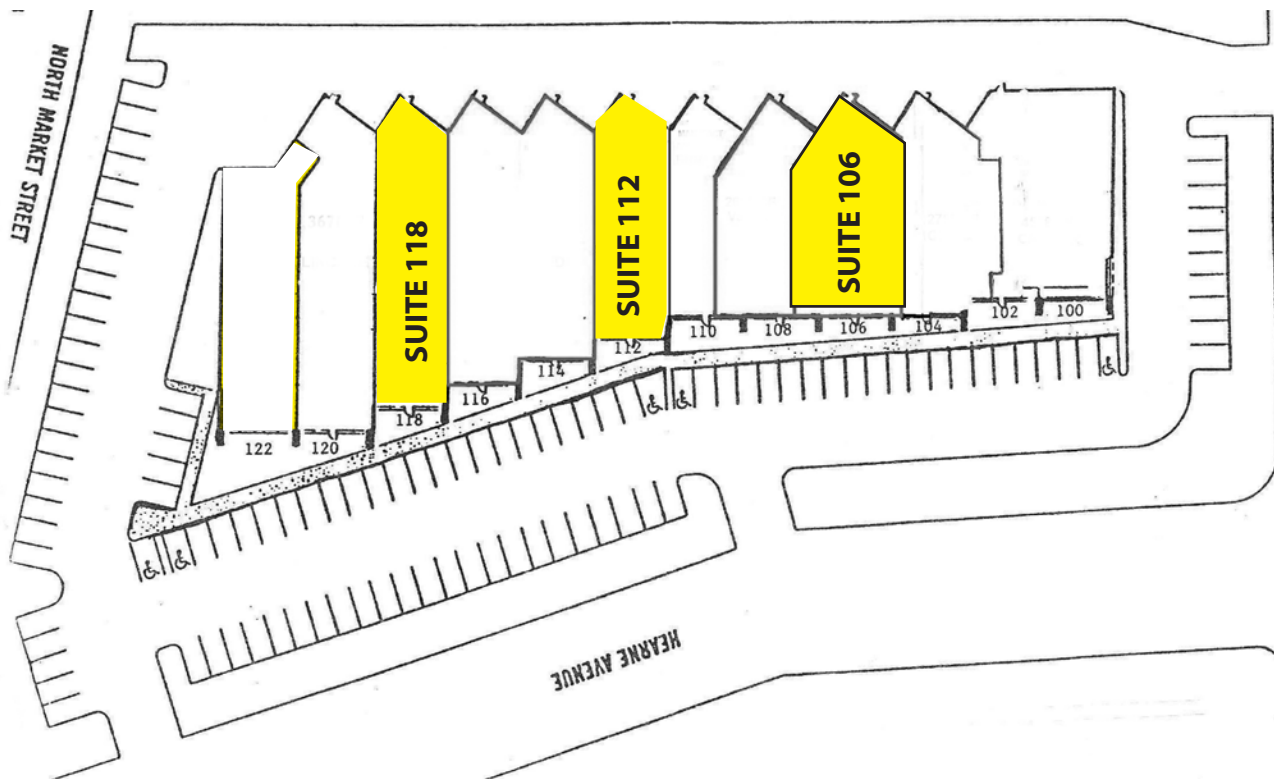


**AVAILABLE SPACES**

**Suite 106:** 3,446 SF

**Suite 112:** 2,795 SF

**Suite 118:** 3,621SF



For information, please contact:

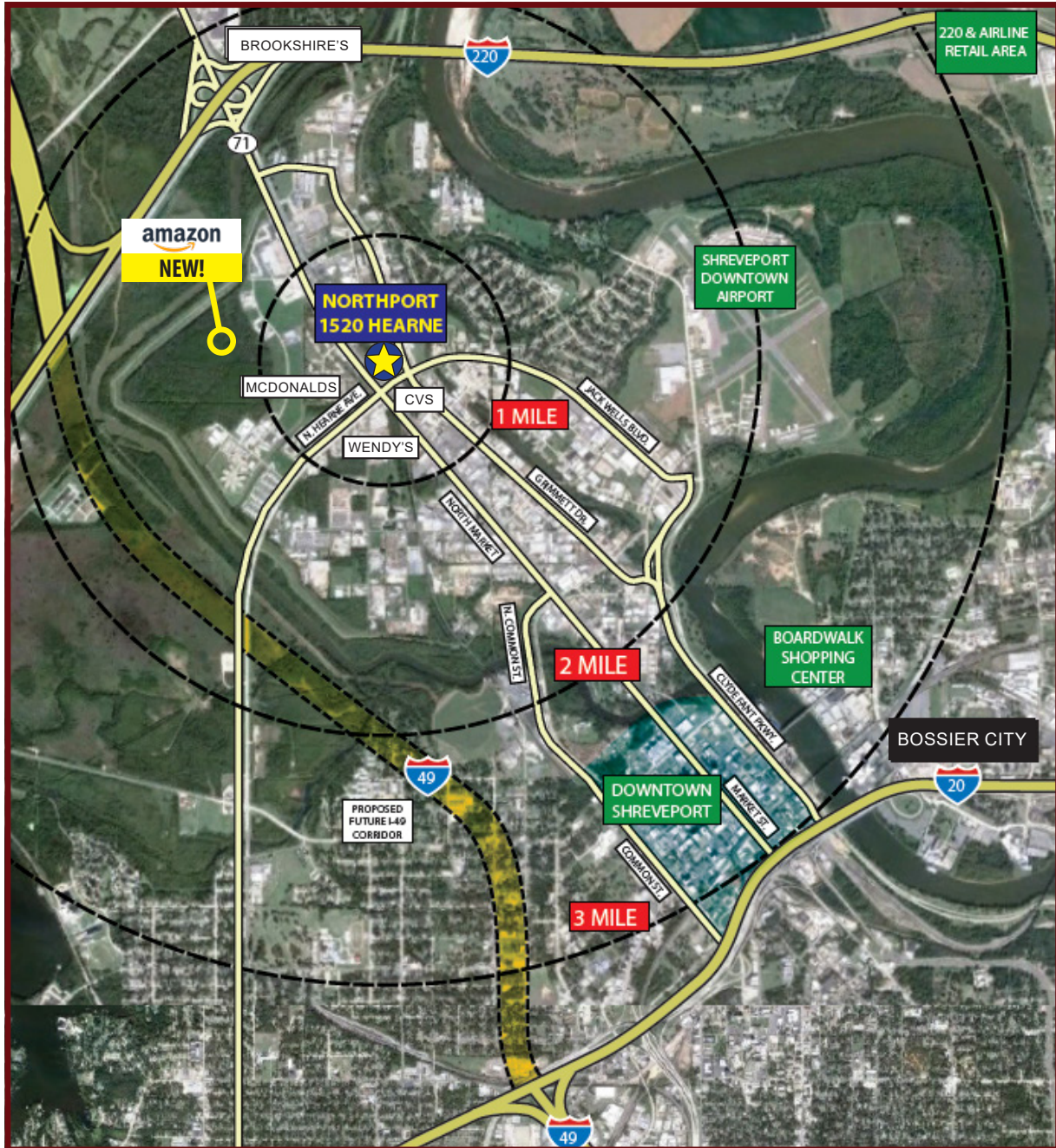
**Michele Sauls, Associate Broker | 318-222-2244**

**[msauls@vintagerealty.com](mailto:msauls@vintagerealty.com) | [vintagerealty.com](http://vintagerealty.com)**

ALL INFORMATION CONTAINED HEREIN IS BELIEVED TO BE ACCURATE, BUT IS NOT WARRANTED AND NO LIABILITY OF ERRORS OR OMISSIONS IS ASSURED BY EITHER THE PROPERTY OWNER OR VINTAGE REALTY COMPANY OR ITS AGENTS AND EMPLOYEES. PRICES AS STATED HEREIN AND PRODUCT AVAILABILITY IS SUBJECT TO CHANGE AND/OR SALE OR LEASE WITHOUT PRIOR NOTICE, AND ALL SIZES AND DIMENSIONS ARE SUBJECT TO CORRECTION. 9/2024

# NORTHPORT BUSINESS CENTER

1520 NORTH HEARNE  
SHREVEPORT, LA 71107



For information, please contact:

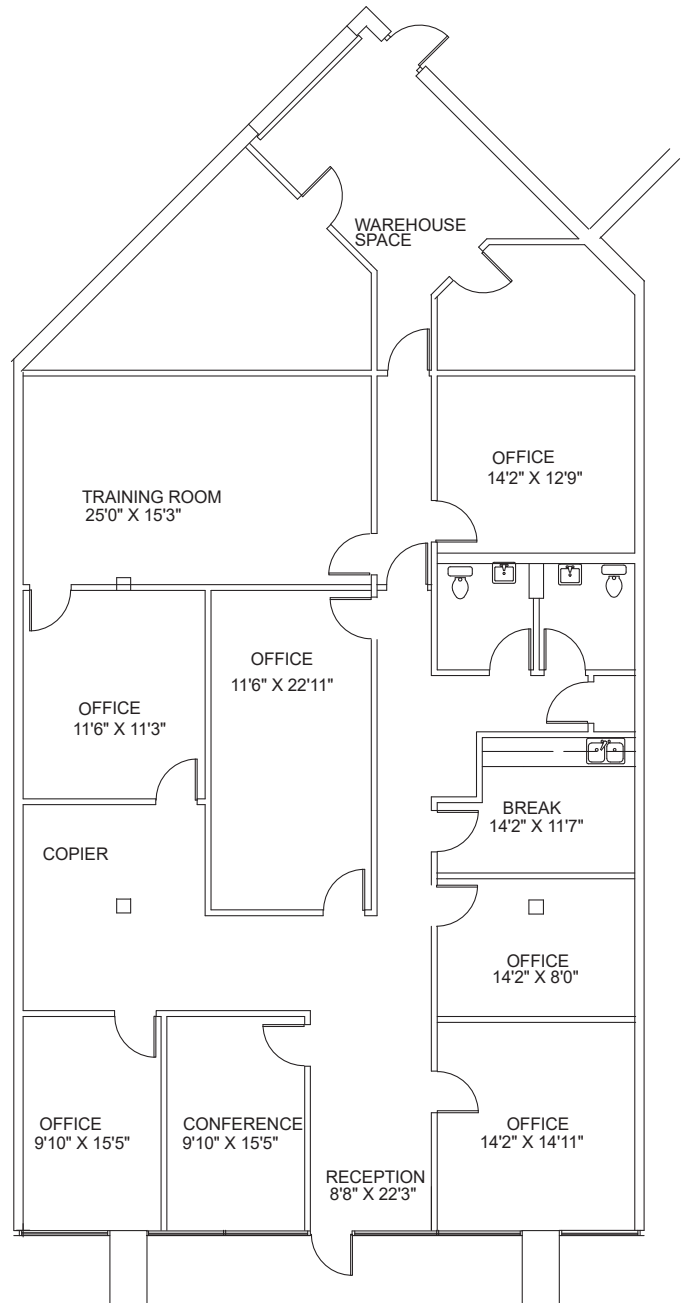
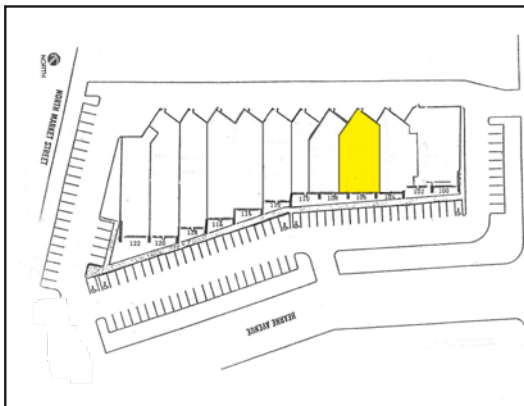
**Michele Sauls, Associate Broker | 318-222-2244**  
**[msauls@vintagerealty.com](mailto:msauls@vintagerealty.com) | [vintagerealty.com](http://vintagerealty.com)**

ALL INFORMATION CONTAINED HEREIN IS BELIEVED TO BE ACCURATE, BUT IS NOT WARRANTED AND NO LIABILITY OF ERRORS OR OMISSIONS IS ASSURED BY EITHER THE PROPERTY OWNER OR VINTAGE REALTY COMPANY OR ITS AGENTS AND EMPLOYEES. PRICES AS STATED HEREIN AND PRODUCT AVAILABILITY IS SUBJECT TO CHANGE AND/OR SALE OR LEASE WITHOUT PRIOR NOTICE, AND ALL SIZES AND DIMENSIONS ARE SUBJECT TO CORRECTION. 9/2024

# NORTHPORT BUSINESS CENTER

1520 NORTH HEARNE  
SHREVEPORT, LA 71107

SUITE 106  
3,446 SQUARE FEET



For information, please contact:

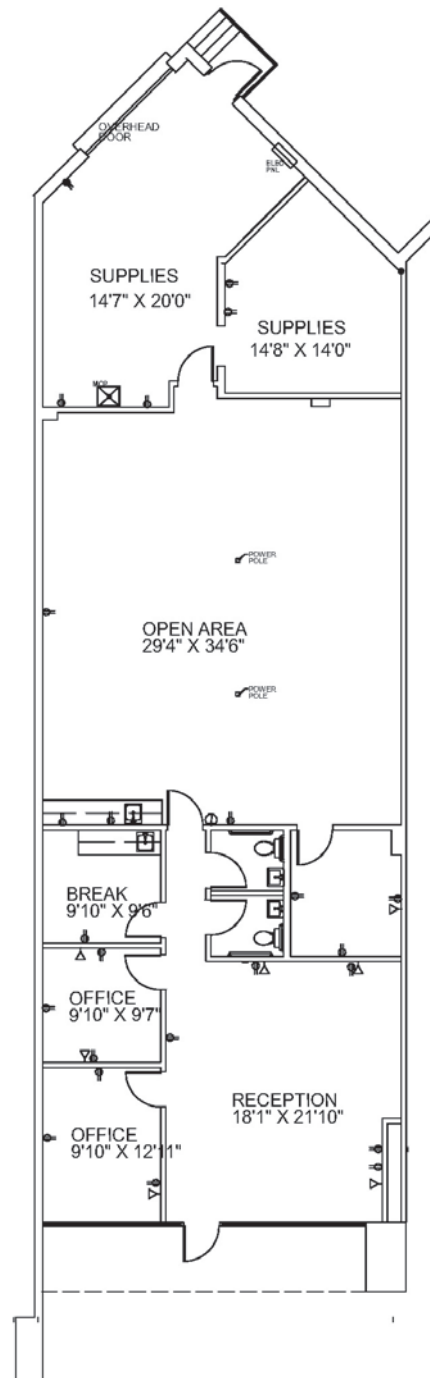
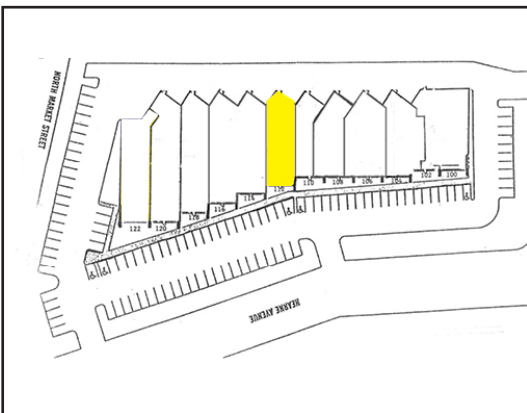
**Michele Sauls, Associate Broker | 318-222-2244**  
**[msauls@vintagerealty.com](mailto:msauls@vintagerealty.com) | [vintagerealty.com](http://vintagerealty.com)**

ALL INFORMATION CONTAINED HEREIN IS BELIEVED TO BE ACCURATE, BUT IS NOT WARRANTED AND NO LIABILITY OF ERRORS OR OMISSIONS IS ASSURED BY EITHER THE PROPERTY OWNER OR VINTAGE REALTY COMPANY OR ITS AGENTS AND EMPLOYEES. PRICES AS STATED HEREIN AND PRODUCT AVAILABILITY IS SUBJECT TO CHANGE AND/OR SALE OR LEASE WITHOUT PRIOR NOTICE, AND ALL SIZES AND DIMENSIONS ARE SUBJECT TO CORRECTION. 9/2024

# NORTHPORT BUSINESS CENTER

1520 NORTH HEARNE  
SHREVEPORT, LA 71107

SUITE 112  
2,795 SQUARE FEET



For information, please contact:

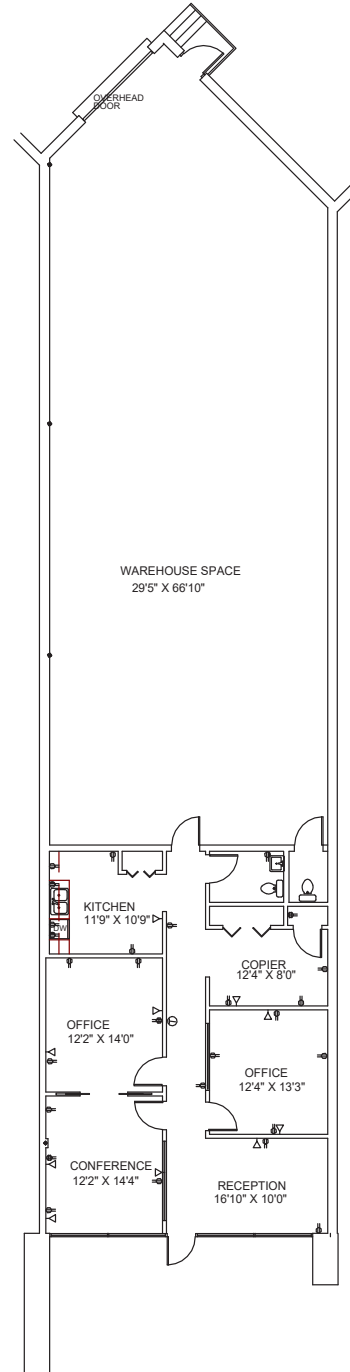
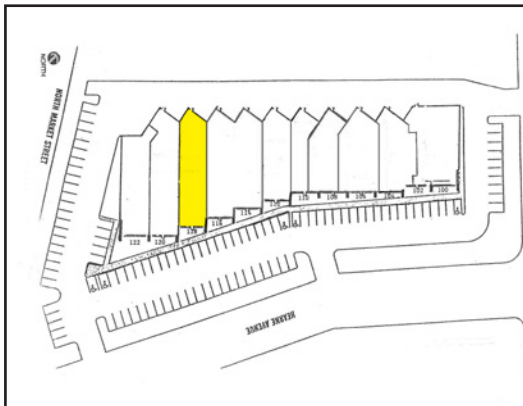
**Michele Sauls, Associate Broker | 318-222-2244**  
**[msauls@vintagerealty.com](mailto:msauls@vintagerealty.com) | [vintagerealty.com](http://vintagerealty.com)**

ALL INFORMATION CONTAINED HEREIN IS BELIEVED TO BE ACCURATE, BUT IS NOT WARRANTED AND NO LIABILITY OF ERRORS OR OMISSIONS IS ASSURED BY EITHER THE PROPERTY OWNER OR VINTAGE REALTY COMPANY OR ITS AGENTS AND EMPLOYEES. PRICES AS STATED HEREIN AND PRODUCT AVAILABILITY IS SUBJECT TO CHANGE AND/OR SALE OR LEASE WITHOUT PRIOR NOTICE, AND ALL SIZES AND DIMENSIONS ARE SUBJECT TO CORRECTION. 9/2024

# NORTHPORT BUSINESS CENTER

1520 NORTH HEARNE  
SHREVEPORT, LA 71107

SUITE 118  
3,621 SQUARE FEET



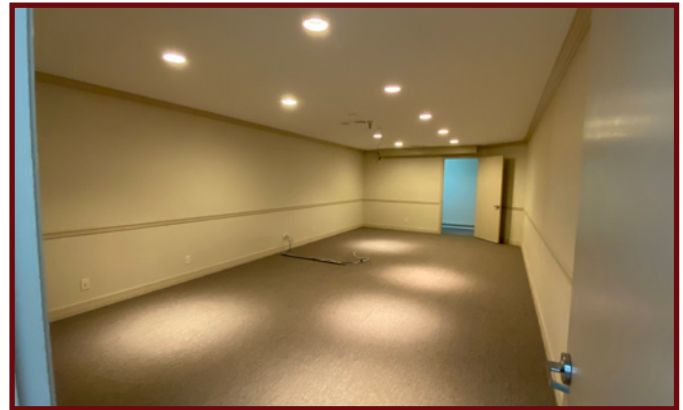
For information, please contact:

**Michele Sauls, Associate Broker | 318-222-2244**  
**[msauls@vintagerealty.com](mailto:msauls@vintagerealty.com) | [vintagerealty.com](http://vintagerealty.com)**

ALL INFORMATION CONTAINED HEREIN IS BELIEVED TO BE ACCURATE, BUT IS NOT WARRANTED AND NO LIABILITY OF ERRORS OR OMISSIONS IS ASSURED BY EITHER THE PROPERTY OWNER OR VINTAGE REALTY COMPANY OR ITS AGENTS AND EMPLOYEES. PRICES AS STATED HEREIN AND PRODUCT AVAILABILITY IS SUBJECT TO CHANGE AND/OR SALE OR LEASE WITHOUT PRIOR NOTICE, AND ALL SIZES AND DIMENSIONS ARE SUBJECT TO CORRECTION. 9/2024

# NORTHPORT BUSINESS CENTER

1520 NORTH HEARNE  
SHREVEPORT, LA 71107



For information, please contact:

**Michele Sauls, Associate Broker | 318-222-2244**  
**[msauls@vintagerealty.com](mailto:msauls@vintagerealty.com) | [vintagerealty.com](http://vintagerealty.com)**

ALL INFORMATION CONTAINED HEREIN IS BELIEVED TO BE ACCURATE, BUT IS NOT WARRANTED AND NO LIABILITY OF ERRORS OR OMISSIONS IS ASSURED BY EITHER THE PROPERTY OWNER OR VINTAGE REALTY COMPANY OR ITS AGENTS AND EMPLOYEES. PRICES AS STATED HEREIN AND PRODUCT AVAILABILITY IS SUBJECT TO CHANGE AND/OR SALE OR LEASE WITHOUT PRIOR NOTICE, AND ALL SIZES AND DIMENSIONS ARE SUBJECT TO CORRECTION. 9/2024