

# RETAIL PROPERTY FOR LEASE

**Sonic Drive-In**  
**1321 East Jefferson Street**  
**Quincy, FL 32351**



**NATL TALCOR**

John McNeill, SIOR  
jmcneill@talcorm.com  
+1 850 224 2300

PROPERTY OVERVIEW

This 1,704 SF former Sonic Drive-In is up for lease in one of Quincy’s busiest retail spots. It’s surrounded by popular fast-food chains and gets great visibility with street frontage on three sides—W. Jefferson (279 ft), W. Crawford (205 ft), and Graves (88 ft). There’s easy access from both W. Jefferson and W. Crawford, plus a turn lane on Jefferson and a median break at Main St. to help with traffic flow. Great location for a quick-service restaurant or other high-traffic business.

PROPERTY HIGHLIGHTS

- Great Location
- Drive Through Lane in place
- Excellent accessibility
- Recently Built (2021)
- Ample Parking

SUMMARY

Lease Rate:	\$10,000/month (NNN)
Available SF:	1,608 SF
Lot Size:	0.88 Acres
Year Built:	2021
Building Size:	1,704 SF
Zoning:	Commercial



# ADDITIONAL PHOTOS

Sonic Drive-In  
1321 East Jefferson Street  
Quincy, FL 32351



**NATL**TALCOR

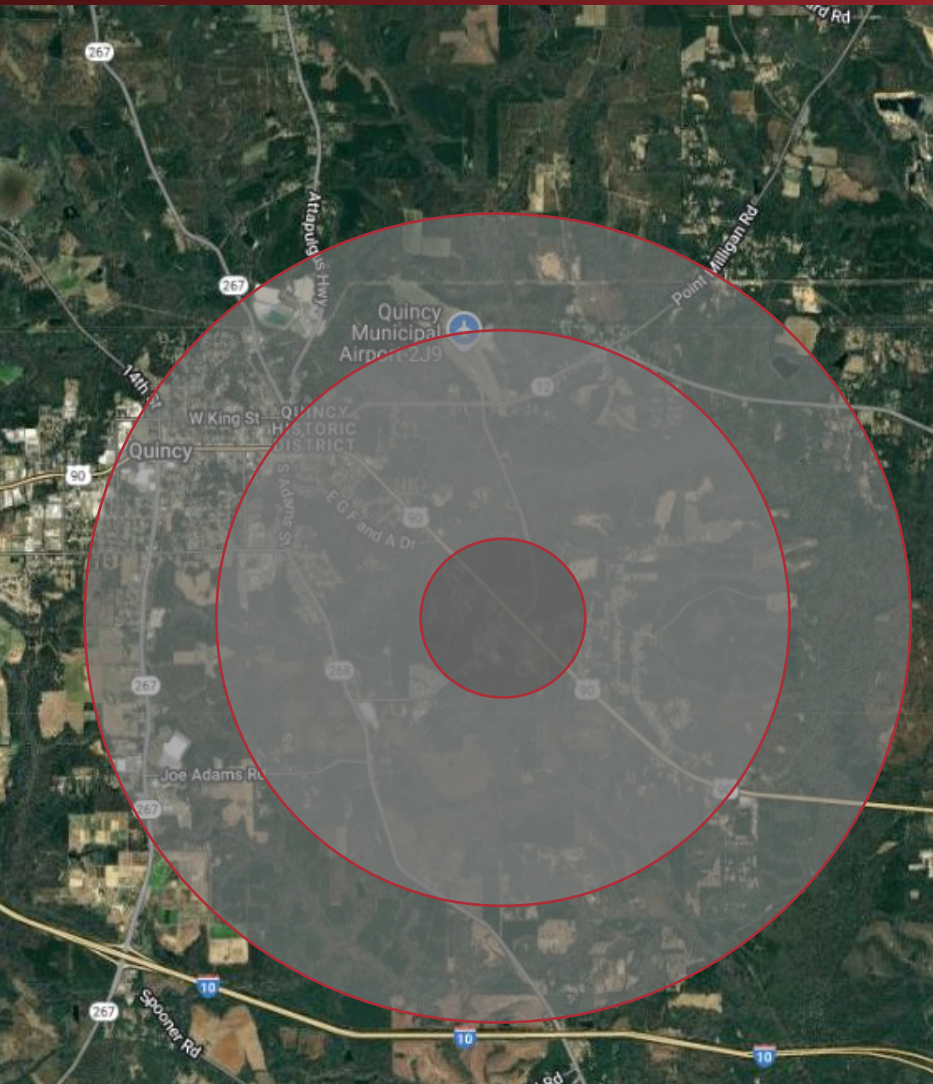
John McNeill, SIOR  
jmcneill@talcor.com  
+1 850 224 2300



# RETAILER MAP

Sonic Drive-In  
1321 East Jefferson Street  
Quincy, FL 32351





DEMOGRAPHICS

POPULATION	1 MILE	3 MILES	5 MILES
Total population	1,830	9,528	14,052
Median age	40	41	41
Median age (male)	38	38	39
Median age (female)	42	43	42

HOUSEHOLDS & INCOME	1 MILE	3 MILES	5 MILES
Total households	1,830	9,528	14,052
# of persons per HH	40	41	41
Average HH income	38	38	39
Average house value	42	43	42