



## Industrial Space For Lease

1523 Burgundy Drive, Streamwood, IL 60107



### LEASE RATE

**\$11.95 SF/YR**

### OFFERING SUMMARY

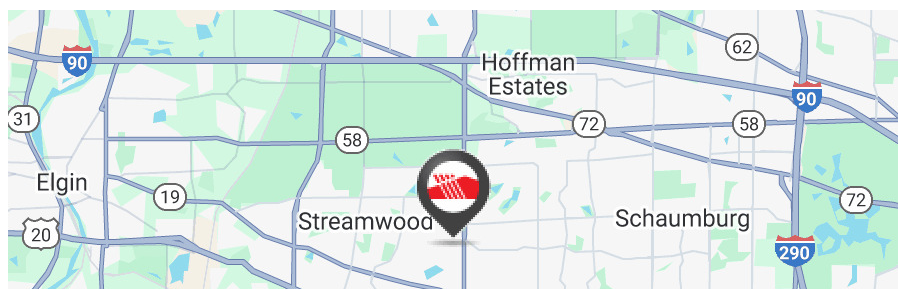
Available SF:	3,300 SF
Lease Rate:	\$11.95 SF/yr (MG)
Building Size:	13,200 SF
Zoning:	I-1: Limited Industrial
Loading:	1 Private DID
Power:	200 Amp / 3-phase
Office:	Approx. 10%

### PROPERTY OVERVIEW

3300 SF Industrial unit with excellent signage (approved industrial signage) and in great condition. Private 10' x 10' drive in door to parking lot with high parking ratio. Corner building location. Remodeled office area with hardwood flooring. Warehouse has air lines and 200A power.

### PROPERTY HIGHLIGHTS

- Industrial Signage Approved
- High image corner location
- Private 10' x 10' drive-in-door
- High parking ratio in building



### SANDRA LOPEZ

O: 847.655.3376  
slm@mclennancos.com

### JIM CONRAD, CCIM

O: 847.655.3383  
C: 847.727.0722  
jpc@mclennancos.com

No warranty or representation is made as to the accuracy of the foregoing information. Terms of sale and lease are subject to change and withdrawal without notice.

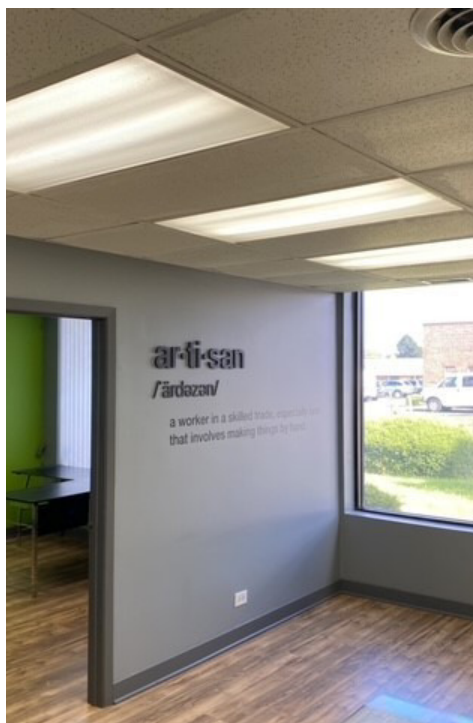
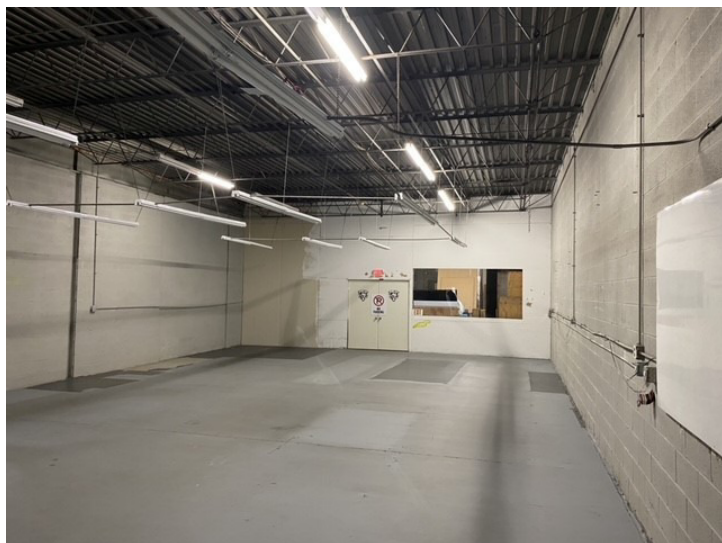






## Industrial Space For Lease

1523-1527 Burgundy Drive, Streamwood, IL 60107



**SANDRA LOPEZ**

O: 847.655.3376

slm@mcLennancos.com

**JIM CONRAD, CCIM**

O: 847.655.3383

C: 847.727.0722

jpc@mcLennancos.com

No warranty or representation is made as to the accuracy of the foregoing information. Terms of sale and lease are subject to change and withdrawal without notice.

25 N. Northwest Highway | Park Ridge, IL 60016 | 847.825.0011 | [www.mclennancos.com](http://www.mclennancos.com)

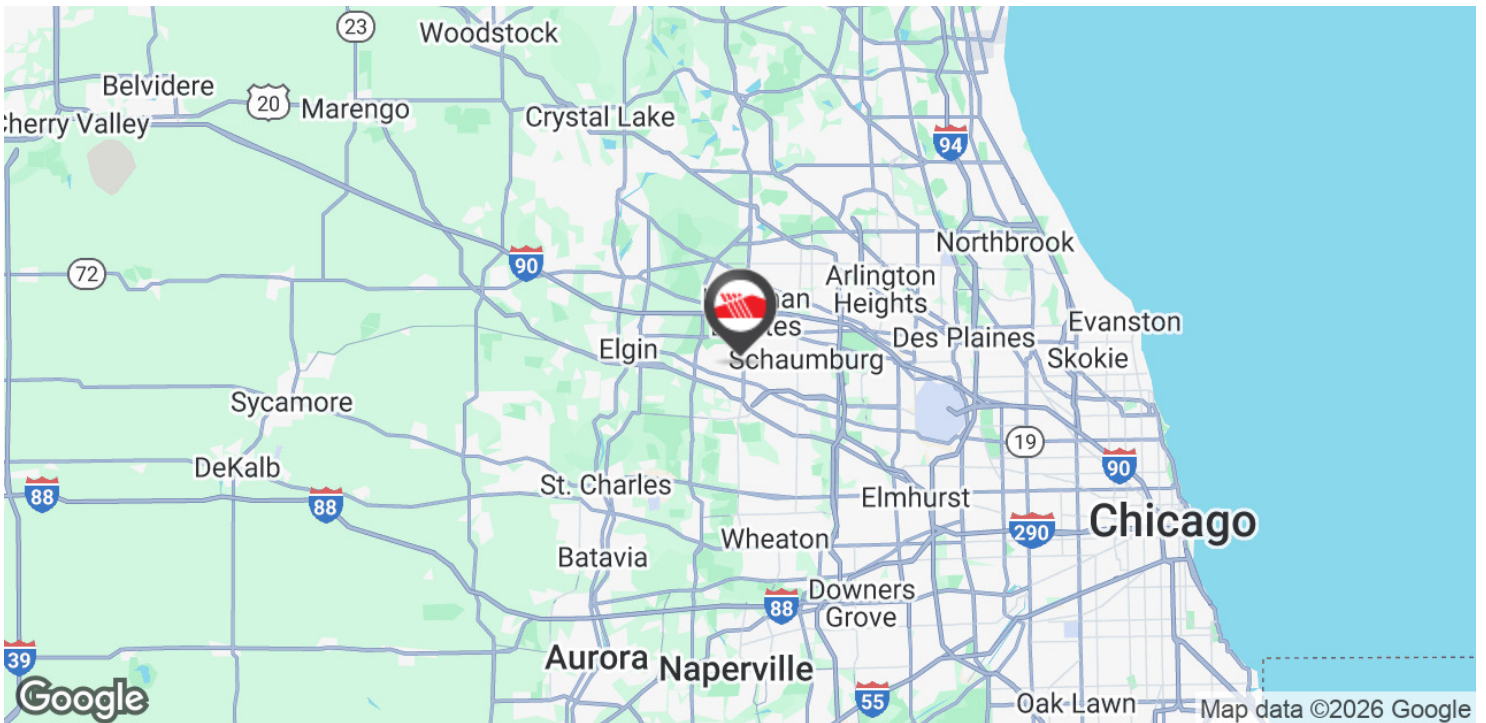
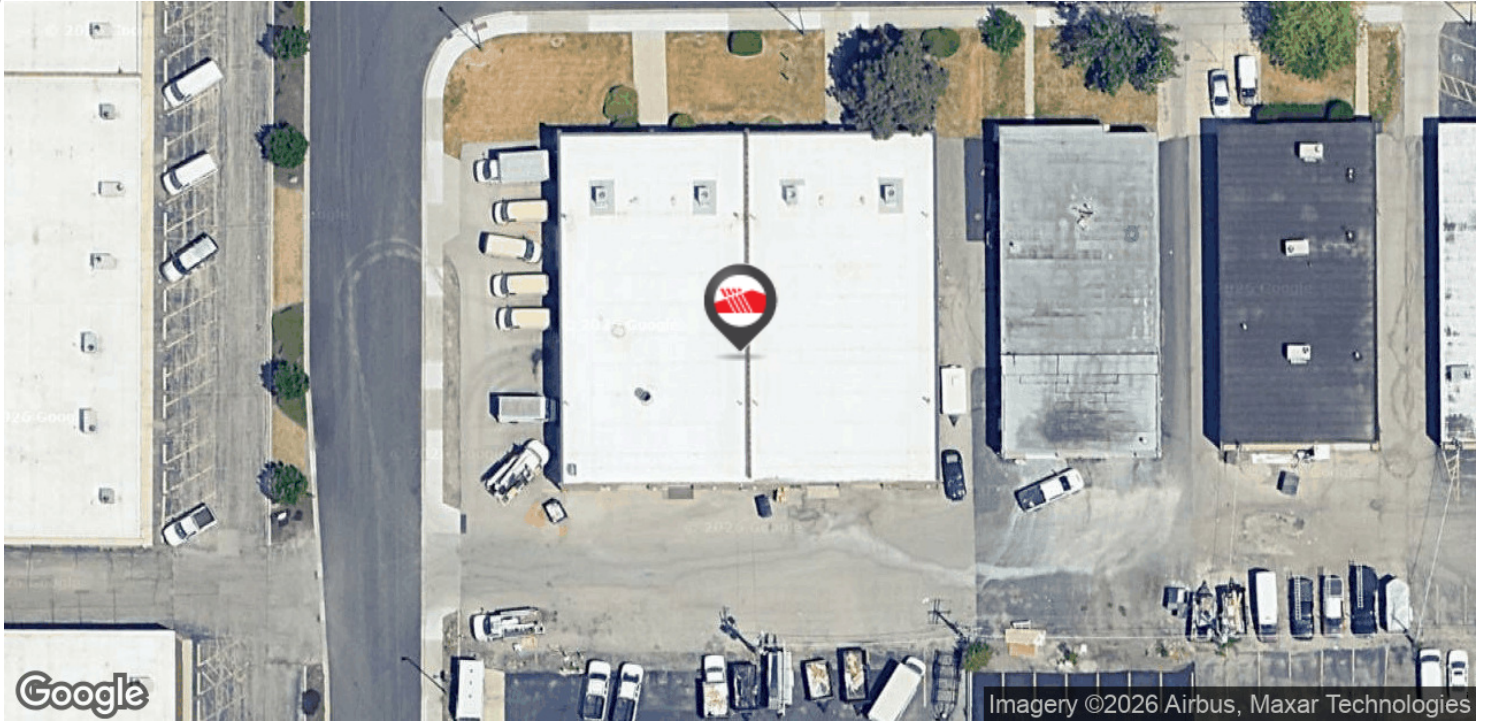






## Industrial Space For Lease

1523-1527 Burgundy Drive, Streamwood, IL 60107



**SANDRA LOPEZ**

O: 847.655.3376

sln@mclennancos.com

**JIM CONRAD, CCIM**

O: 847.655.3383

C: 847.727.0722

jpc@mclennancos.com

No warranty or representation is made as to the accuracy of the foregoing information. Terms of sale and lease are subject to change and withdrawal without notice.

25 N. Northwest Highway | Park Ridge, IL 60016 | 847.825.0011 | [www.mclennancos.com](http://www.mclennancos.com)

