

FAIRWAY PARK BUSINESS CENTER

2517 – 2523 FAIRWAY PARK DR & 10606 HEMPSTEAD RD
HOUSTON, TX 77092



**NORTHWEST HOUSTON
SUBMARKET**



**GREAT ACCESS TO I-610,
US-290, AND HEMPSTEAD**



14' AVERAGE CLEAR HEIGHT



TENANT-CONTROLLED HVAC



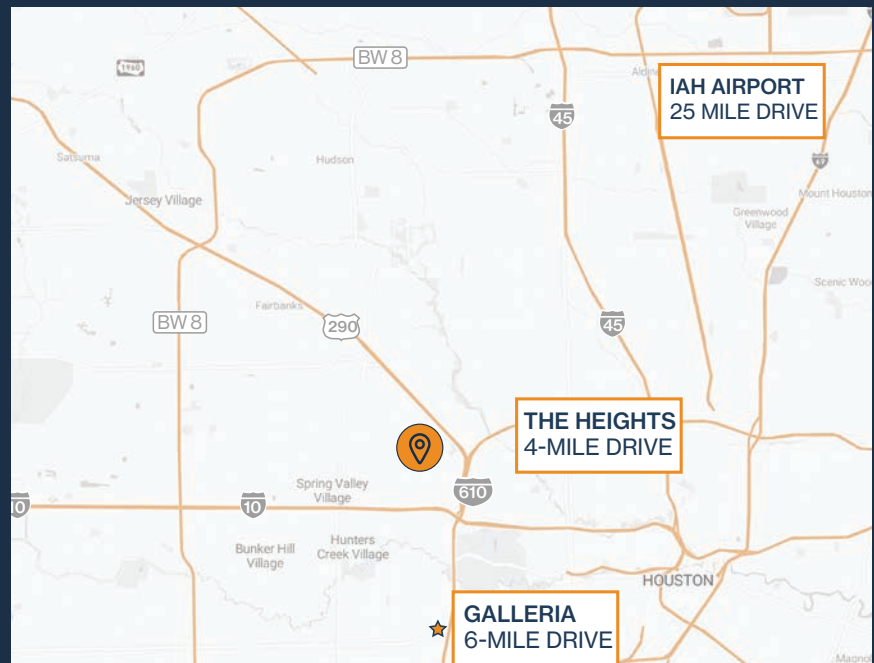
**GRADE-LEVEL AND
SEMI-DOCK LOADING**



EXTERIOR TENANT SIGNAGE



**1,168 SF – 7,719 SF
SUITES AVAILABLE**



THOMAS PFEIFER



281.504.7460



THOMAS.PFEIFER@FORT-COMPANIES.COM



**FORT
LEASING**

This information is deemed reliable, however, Fort makes no guarantee, warranties, or representations as to the completeness or accuracy thereof.



SITE PLAN



THOMAS PFEIFER



281.504.7460

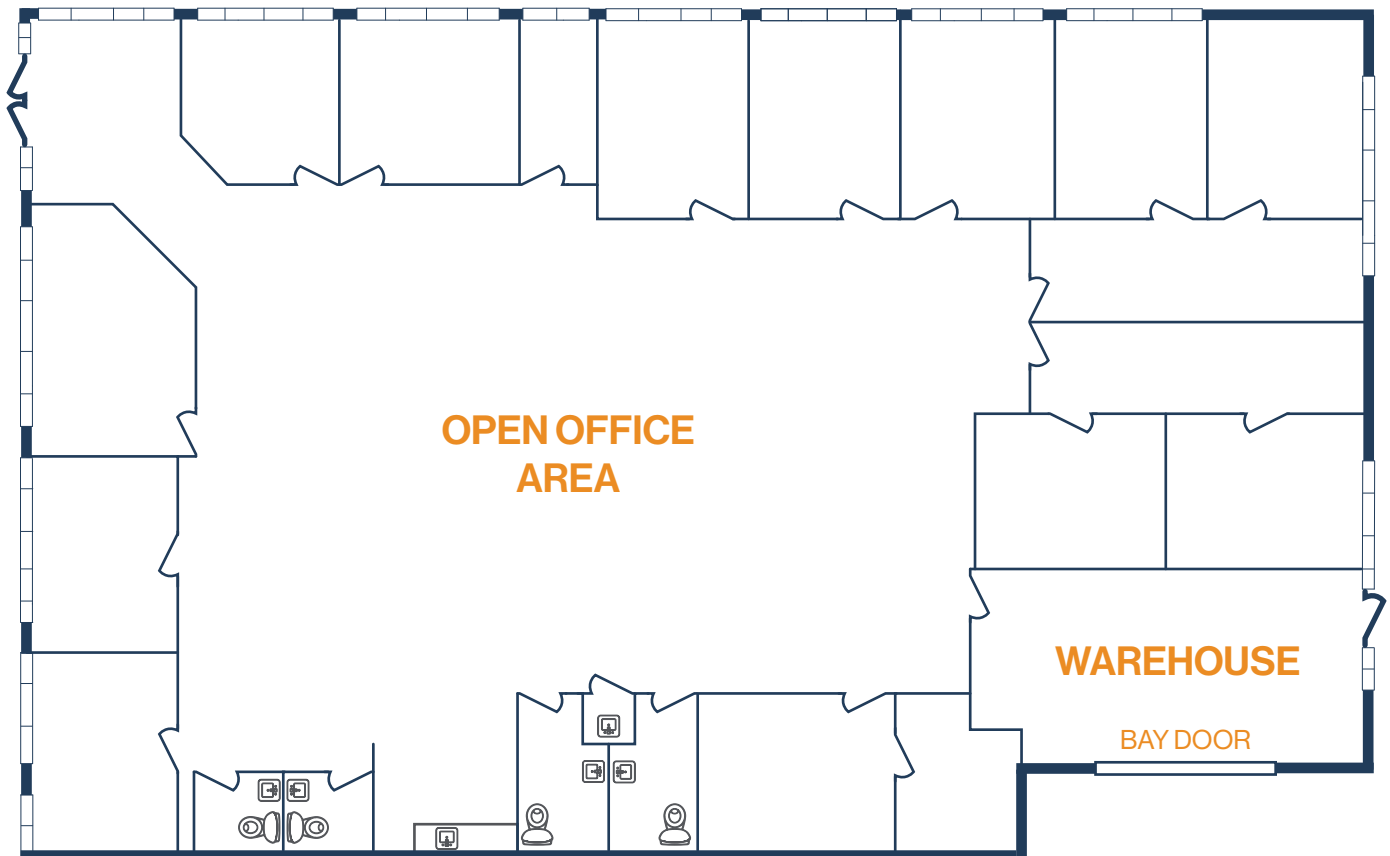


THOMAS.PFEIFER@FORT-COMPANIES.COM



FLOOR PLAN — AVAILABLE IMMEDIATELY

- » 7,719 SF Total Available
- » 2,500 SF Open Office
- » 4,739 SF Private Space
- » 480 SF Warehouse
- » (12) Private Offices
- » (1) Conference Room
- » (4) Bathrooms
- » (1) Break Room
- » Street Frontage
- » (1) 14' x 10' Grade Level Door



THOMAS PFEIFER



281.504.7460

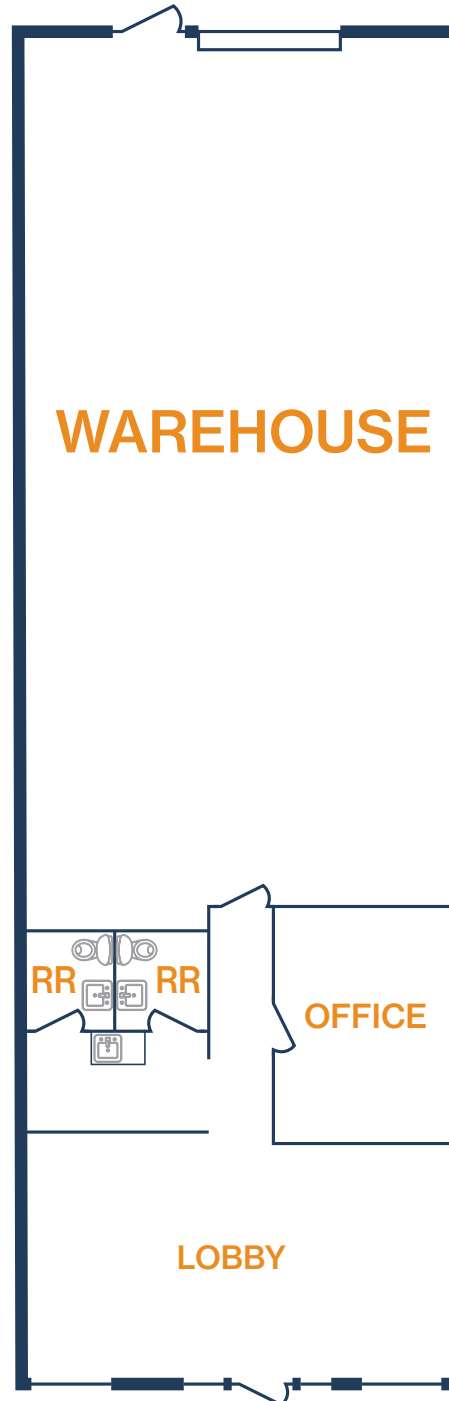


THOMAS.PFEIFER@FORT-COMPANIES.COM



FLOOR PLAN — AVAILABLE IMMEDIATELY

- » 2,876 SF Total Available
 - » 915 SF Office
 - » 1,961 SF Warehouse
- » Climate Controlled Warehouse
- » Glass Storefront
- » (1) Grade Level Door



THOMAS PFEIFER



281.504.7460



THOMAS.PFEIFER@FORT-COMPANIES.COM



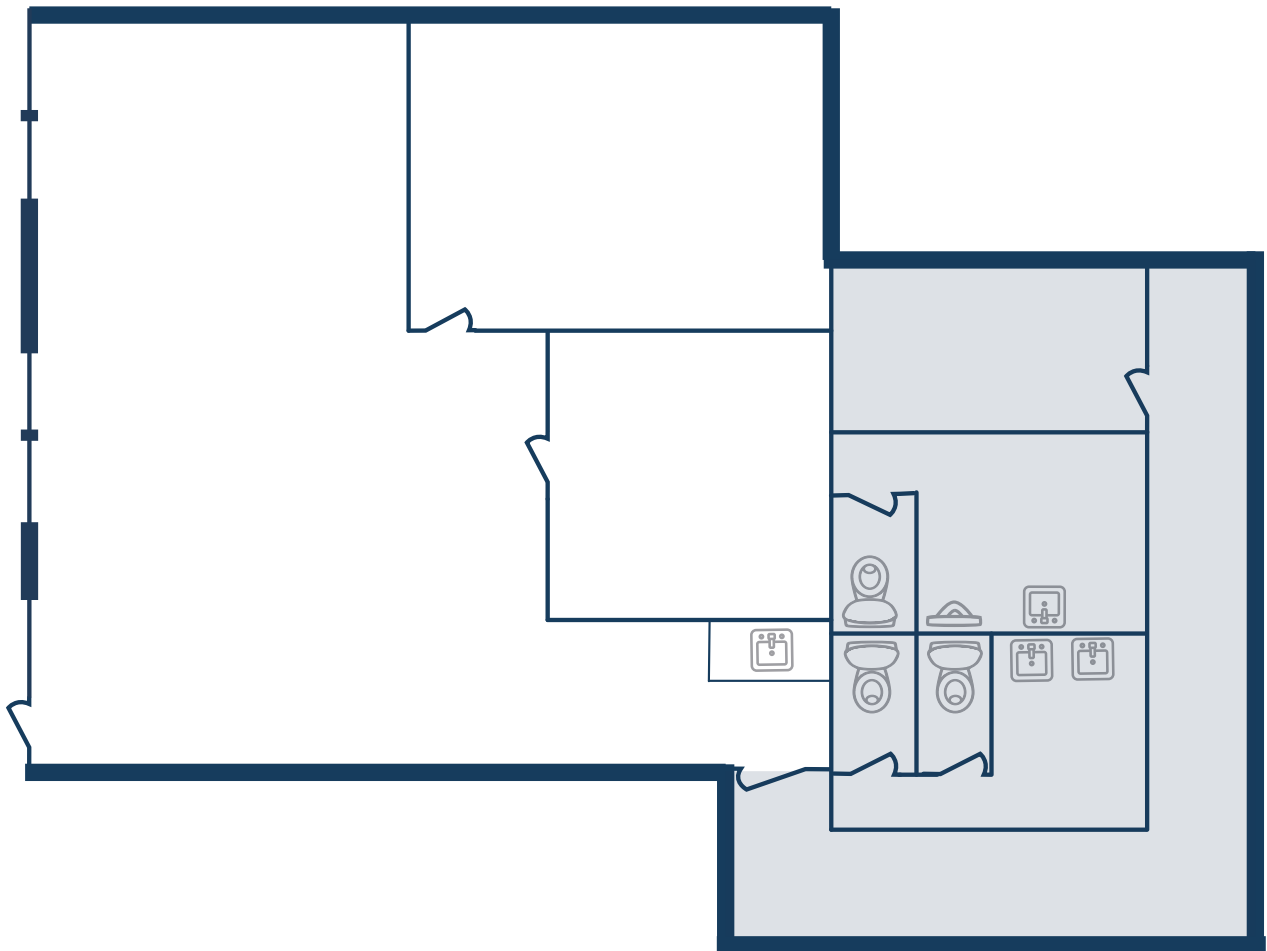
FORT
LEASING

FAIRWAY PARK BUSINESS CENTER

10606 Hempstead Rd, Suite 128
Houston, TX 77092

FLOOR PLAN — AVAILABLE IMMEDIATELY

- » 1,191 SF Total Available
- » Glass Storefront



THOMAS PFEIFER



281.504.7460



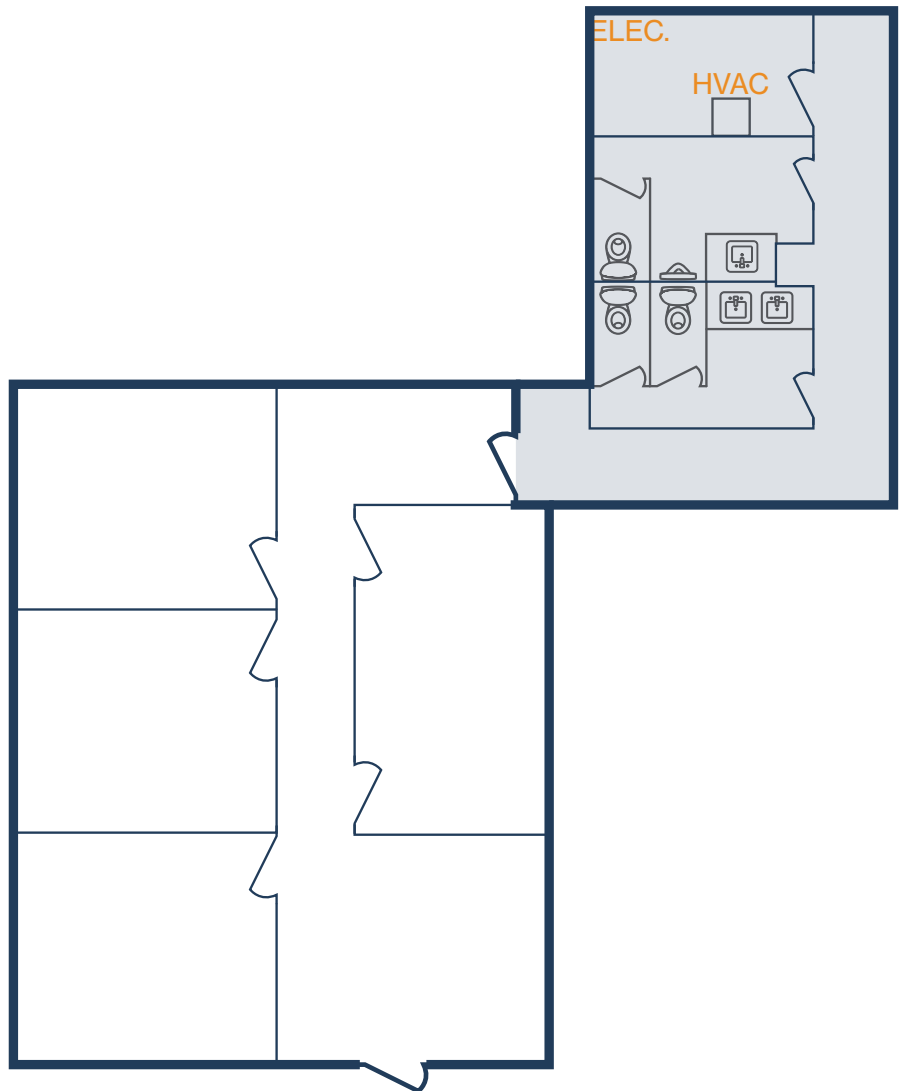
THOMAS.PFEIFER@FORT-COMPANIES.COM

This information is deemed reliable, however, Fort makes no guarantee, warranties, or representations as to the completeness or accuracy thereof.



FLOOR PLAN — AVAILABLE IMMEDIATELY

- » 1,586 SF Total Available
- » 100% Office
- » Common Area Bathroom



THOMAS PFEIFER



281.504.7460

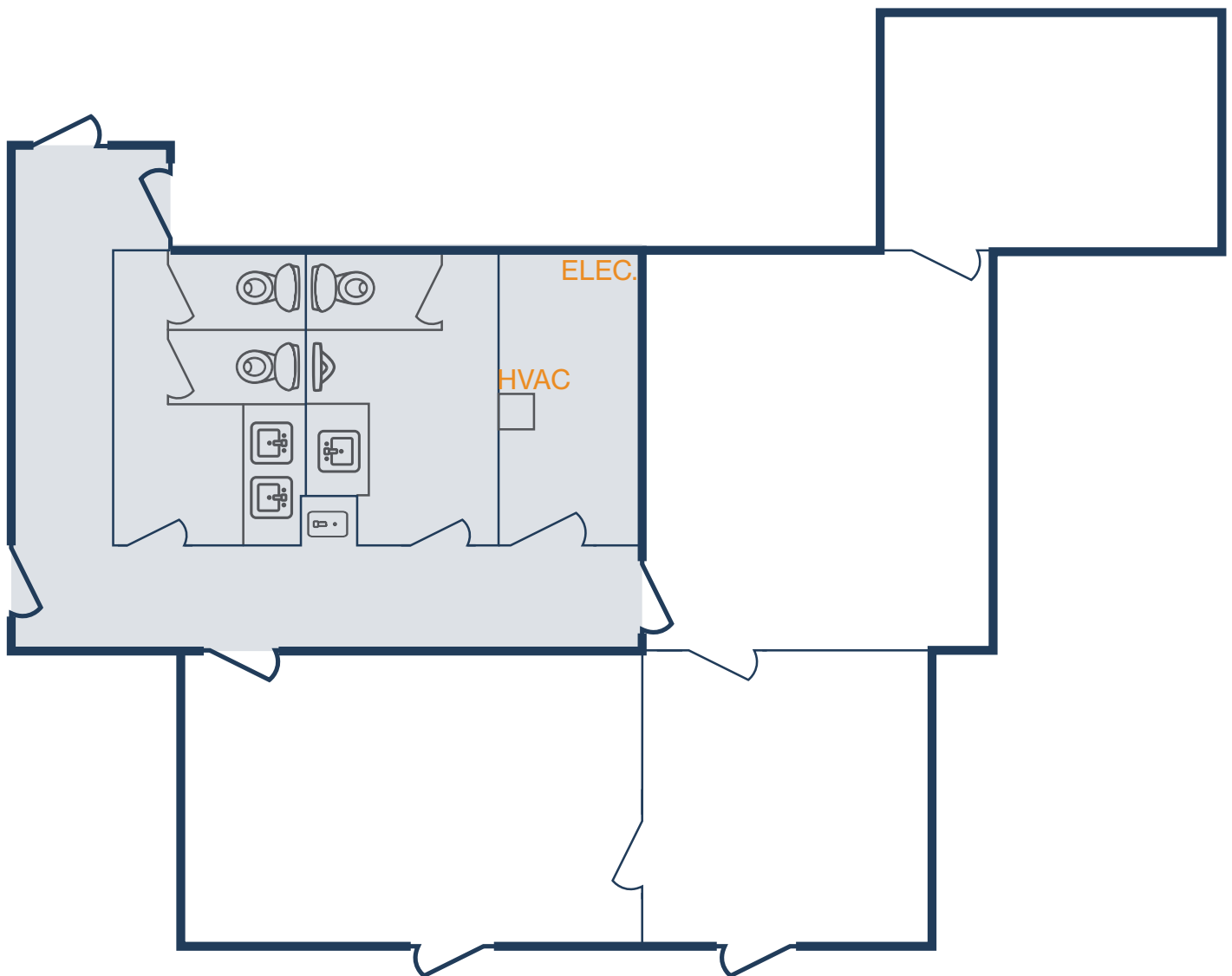


THOMAS.PFEIFER@FORT-COMPANIES.COM



FLOOR PLAN — AVAILABLE IMMEDIATELY

- » 1,168 SF Total Available
 - » 100% Office
 - » Common Area Bathroom



THOMAS PFEIFER



281.504.7460

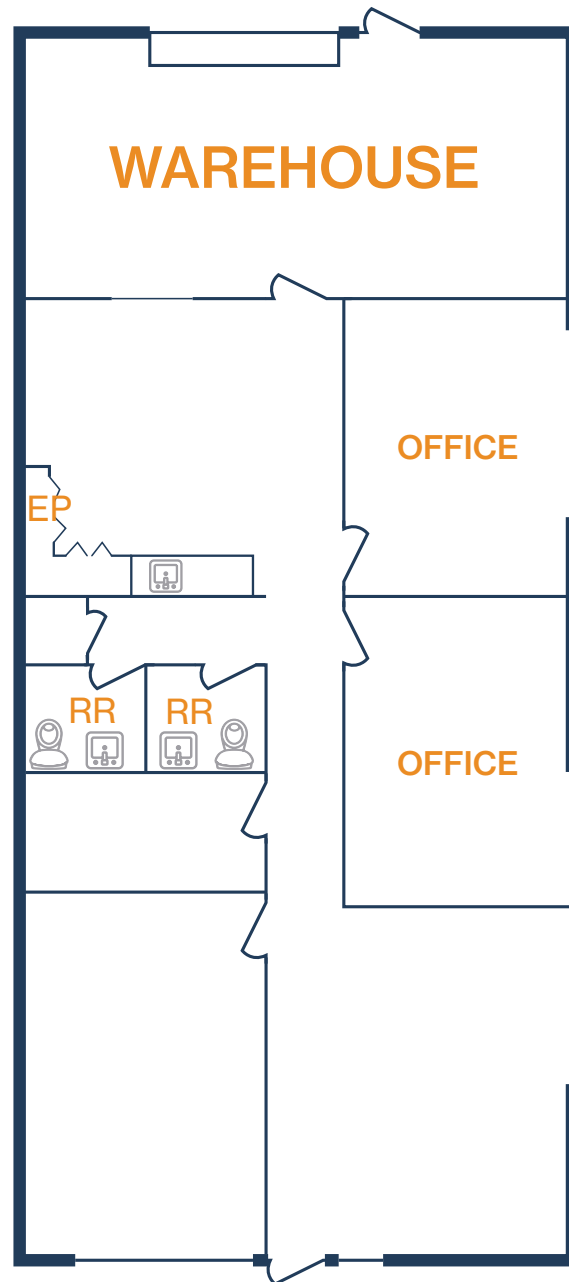


THOMAS.PFEIFER@FORT-COMPANIES.COM



FLOOR PLAN — AVAILABLE IMMEDIATELY

- » 1,869 SF Total Available
 - » 1,449 SF Office
 - » 420 SF Warehouse
- » Glass Storefront
- » (1) Grade Level Door



THOMAS PFEIFER



281.504.7460



THOMAS.PFEIFER@FORT-COMPANIES.COM



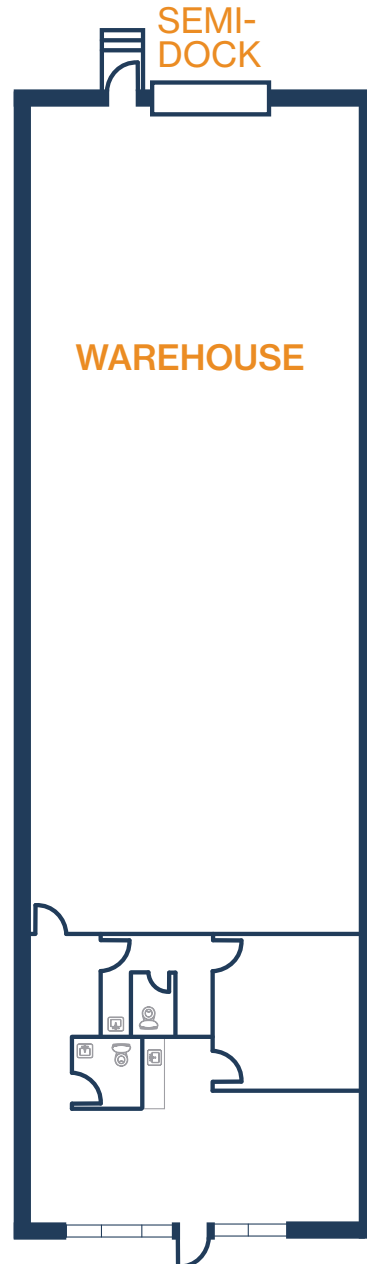
FORT
LEASING

FAIRWAY PARK BUSINESS CENTER

2517 Fairway Fairway Park Dr, Suite 400
Houston, TX 77092

FLOOR PLAN — AVAILABLE IMMEDIATELY

- » 2,943 SF Total Available
 - » 735 SF Office
 - » 2,208 SF Warehouse
- » Glass Storefront
- » (1) Semi-Dock Door



THOMAS PFEIFER



281.504.7460



THOMAS.PFEIFER@FORT-COMPANIES.COM

This information is deemed reliable, however, Fort makes no guarantee, warranties, or representations as to the completeness or accuracy thereof.