



826 WASHINGTON RD

WESTMINSTER, MARYLAND 21157

FOR
**SALE/
LEASE**



MACKENZIE

COMMERCIAL REAL ESTATE SERVICES, LLC

PROPERTY OVERVIEW

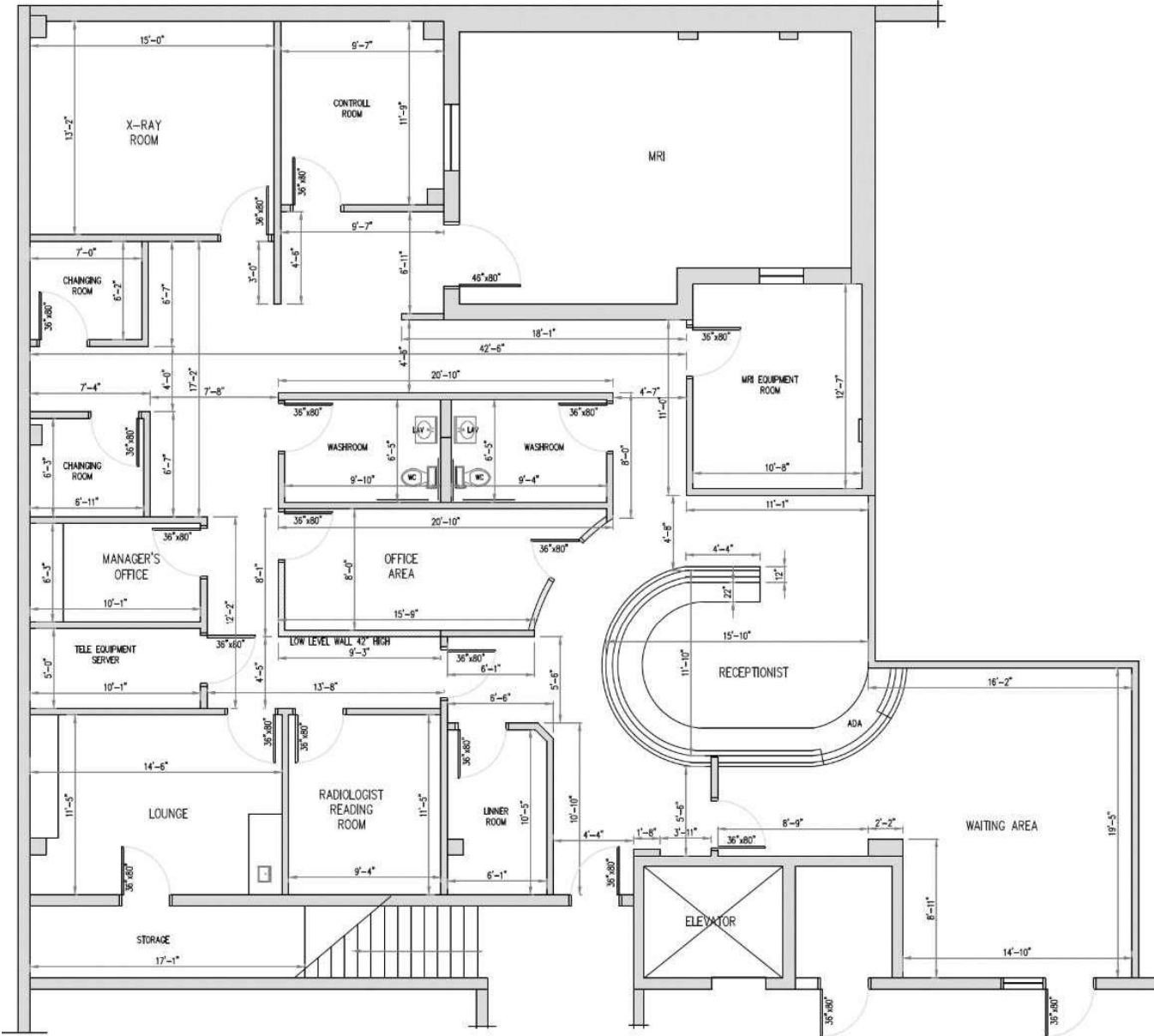
HIGHLIGHTS:

- Fully built-out medical condo with private offices, 2 bathrooms, exam rooms, and large waiting room
- Previously a radiology practice
- Located in the Phyllis Green Medical Center
- 0.7 miles from Carroll Hospital Center
- At grade patient drop-off in the front and back
- Fully ADA Compliant Building
- 100% medical building
- Parking surrounding the building
- Corner Unit
- Turnkey and tenant improvement allowance options available

AVAILABLE:	SUITE 112: 1,500 - 3,189 SF ±
SALE PRICE:	NEGOTIABLE
LEASE RATE:	NEGOTIABLE



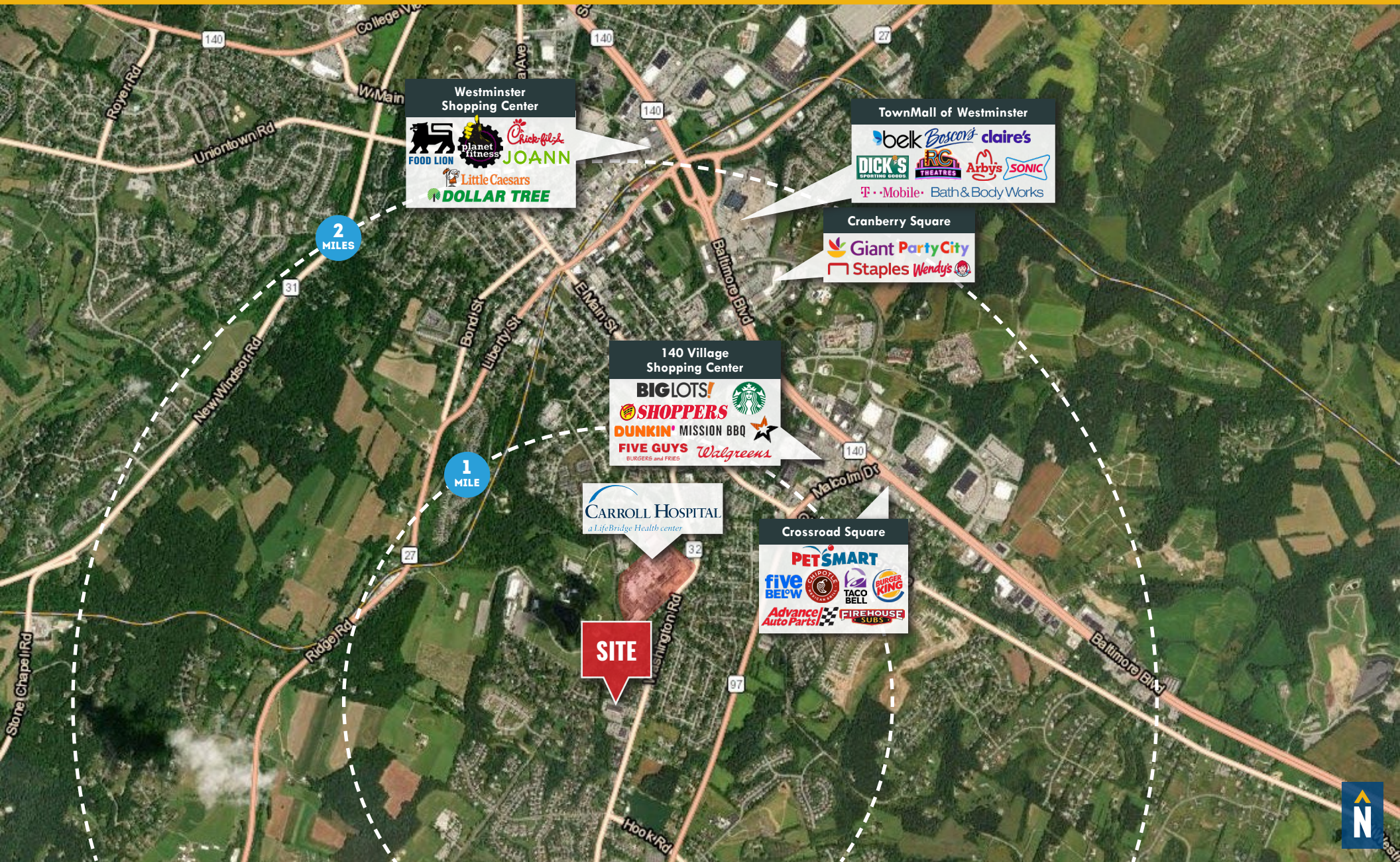
FLOOR PLAN



INTERIOR PHOTOS



TRADE AREA



FOR MORE INFO **CONTACT:**



DENNIS BOYLE, SIOR

SENIOR VICE PRESIDENT

443.798.9339

DBOYLE@mackenziecommercial.com



MACKENZIE

COMMERCIAL REAL ESTATE SERVICES, LLC

410-872-0400

10175 Little Patuxent Parkway, Suite 902
Columbia, MD 21044

OFFICES IN: ANNAPOLIS, MD BALTIMORE, MD BEL AIR, MD **COLUMBIA, MD** LUTHERVILLE, MD CHARLOTTESVILLE, VA

www.MACKENZIECOMMERCIAL.com



VISIT **PROPERTY PAGE** FOR MORE INFORMATION.

No warranty or representation, expressed or implied, is made as to the accuracy of the information contained herein, and same is submitted subject to errors, omissions, change of price, rental or other conditions, withdrawal without notice, and to any specific listing conditions imposed by our principals.