

PROPERTY DESCRIPTION

Prime ground lease/build to suit opportunity available just west of the intersection of Middletown Warwick Road and Levels Road in the booming Middletown, DE area! 6.0 acres of commercially zoned land located adjacent to Royal Farms and within .25 miles from the new 301 interchange. The existing acreage can be subdivided to a minimum of 1 acre to accommodate a prospective Tenant's acreage requirement. Ground lease and build to suit pricing will be established based on a prospective Tenant's acreage and delivery requirements. This property is located in close proximity to the 1.2 million square foot Amazon Fulfillment Center, Datwyler Pharmaceuticals production plant, 400,000 square foot Clarios distribution facility, 282,000 square foot Breakthru Beverage Company and the new 2,200,000 square foot STA Pharmaceutical manufacturing campus. Don't miss your chance to be located in the center of the employment hub and be a part of the large-scale surrounding development.

PROPERTY DETAILS

- **Available:** 6.0 acres
 - > Pad sites available from 1 acre +
- **Lease Rate:** Negotiable
- **Lease Term:** 5 year minimum
- **Zoning:** C-3 (employment/regional retail)
- **Tax Parcel ID#:** 23-065.00-003
- **Traffic Counts:** 22,000 VPD
 - > Located within the Westtown Traffic Improvement District (TID)
 - > Stormwater Management infrastructure in place
 - > Highway impact fees paid

DEMOGRAPHICS

POLYGON AREA

Total Population	117,049
Average HH Income	\$91,574
Total Households	39,662
Median Age	39.0



For More Information, Contact:

Andy Fox
afox@dsmre.com
302.283.1800 Office
302.229.1304 Cell

Davis Mitchell
dmitchell@dsmre.com
302.283.1800 Office
302.530.2512 Cell

Alicia Fox
alicia@dsmre.com
302.283.1800 Office
302.419.5477 Cell

DSM Commercial
Real Estate Services
3304 Old Capitol Trail
Wilmington, DE 19808
dsmre.com



For More Information, Contact:

Andy Fox
afox@dsmre.com
302.283.1800 Office
302.229.1304 Cell

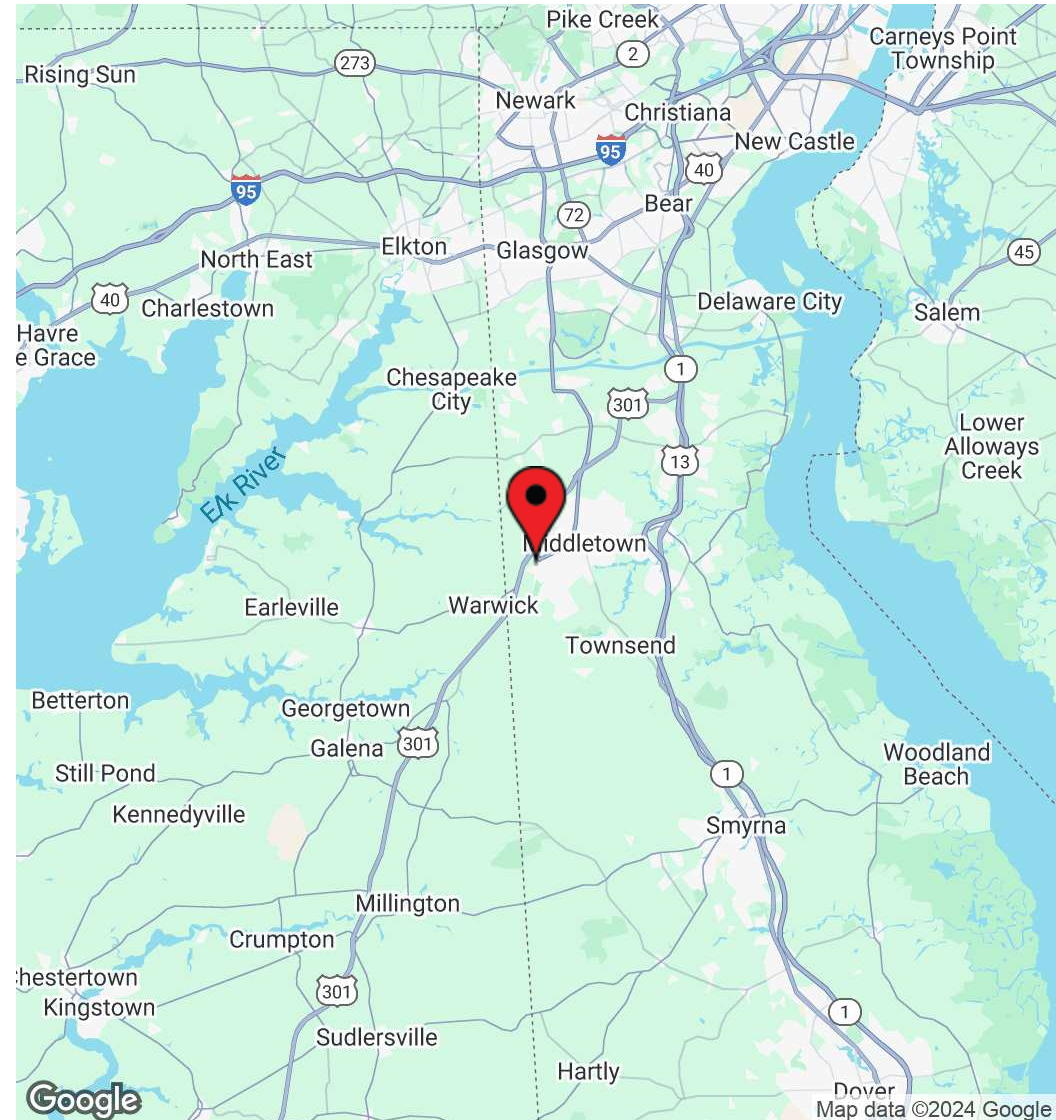
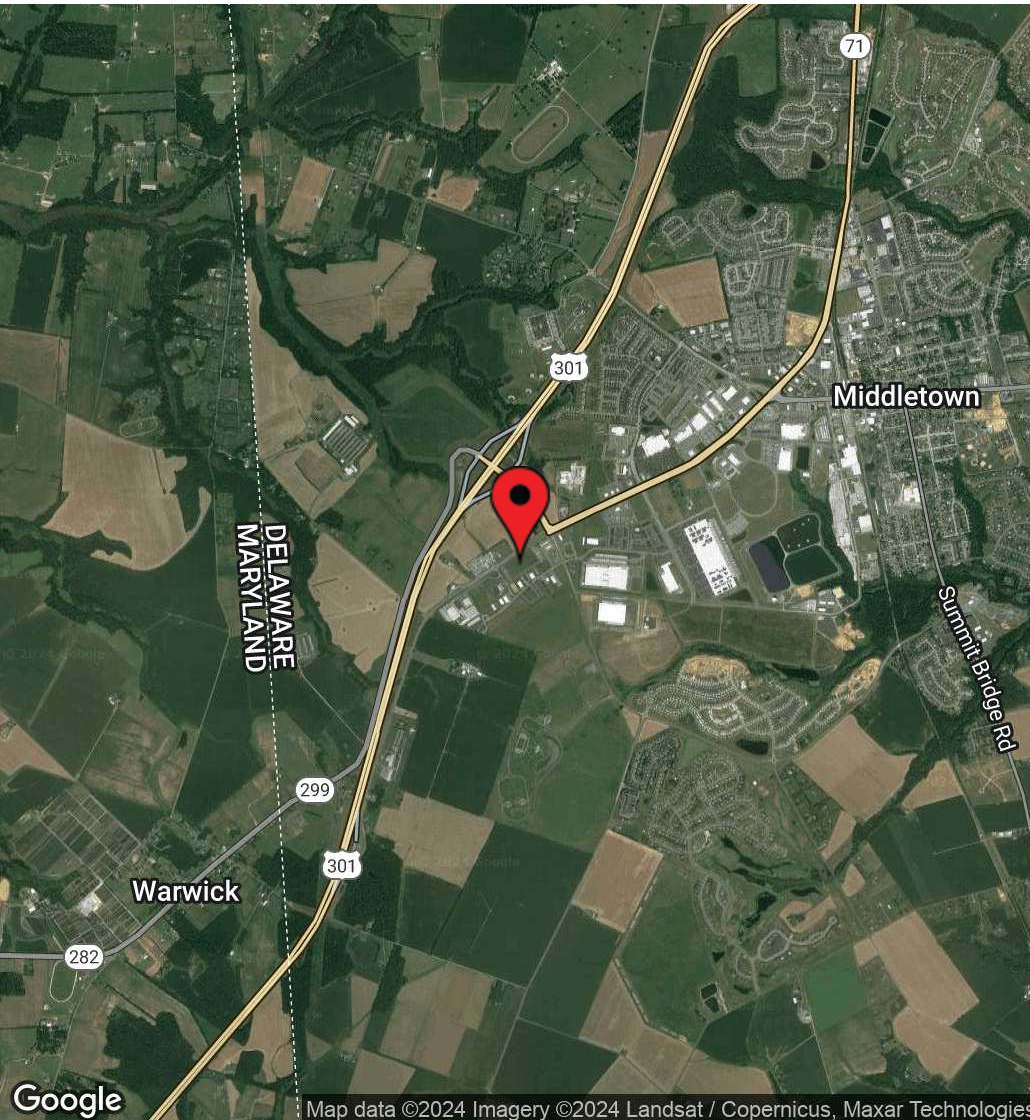
Davis Mitchell
dmitchell@dsmre.com
302.283.1800 Office
302.530.2512 Cell

Alicia Fox
alicia@dsmre.com
302.283.1800 Office
302.419.5477 Cell

DSM Commercial
Real Estate Services
3304 Old Capitol Trail
Wilmington, DE 19808
dsmre.com

870 Middletown Warwick Road
Middletown, DE 19709

SUBDIVIDABLE LAND FOR LEASE



For More Information, Contact:

Andy Fox
afox@dsmre.com
302.283.1800 Office
302.229.1304 Cell

Davis Mitchell
dmitchell@dsmre.com
302.283.1800 Office
302.530.2512 Cell

Alicia Fox
alicia@dsmre.com
302.283.1800 Office
302.419.5477 Cell

DSM Commercial
Real Estate Services
3304 Old Capitol Trail
Wilmington, DE 19808
dsmre.com