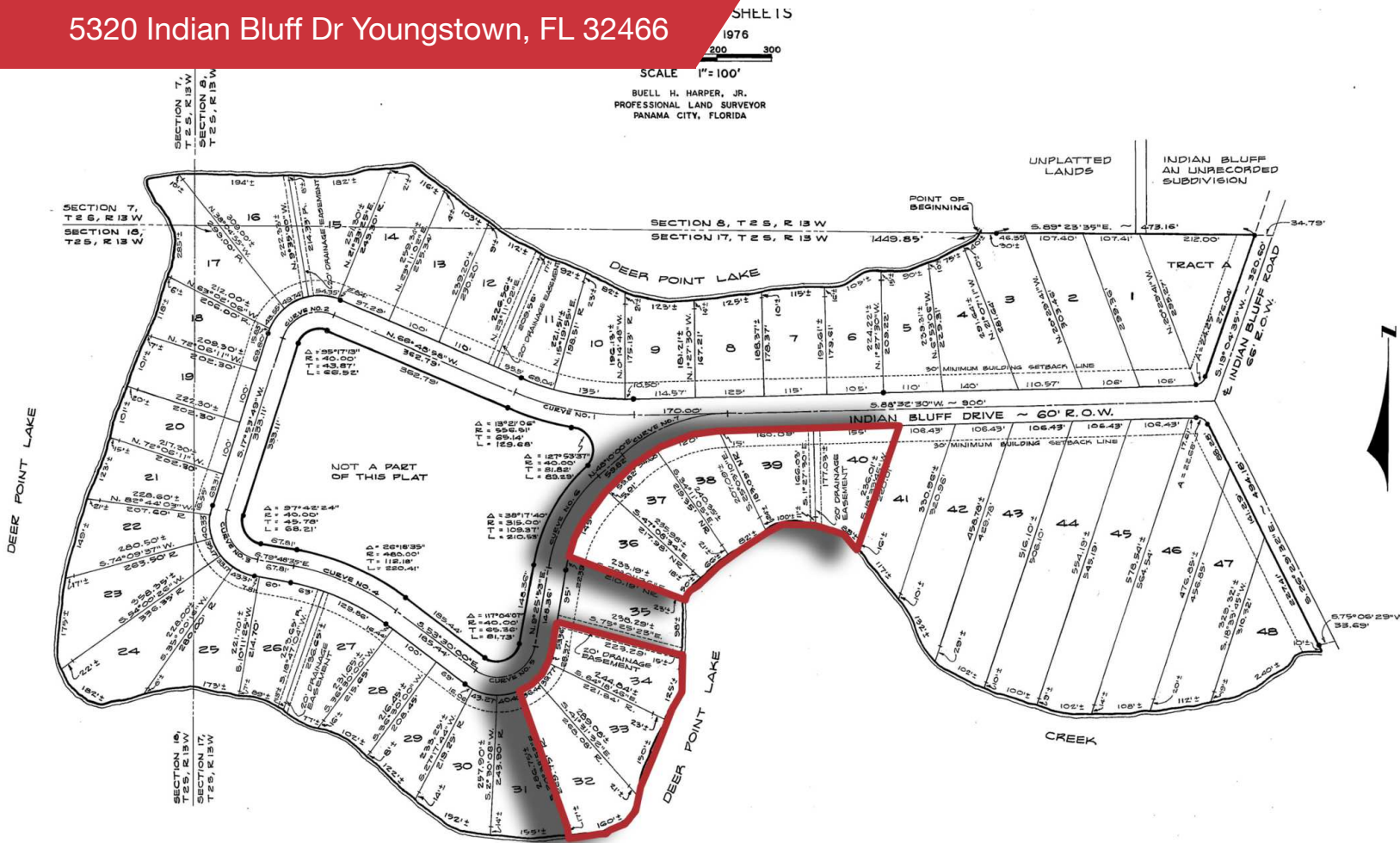


FOR SALE

5320 Indian Bluff Dr Youngstown, FL 32466

NAI TALCOR

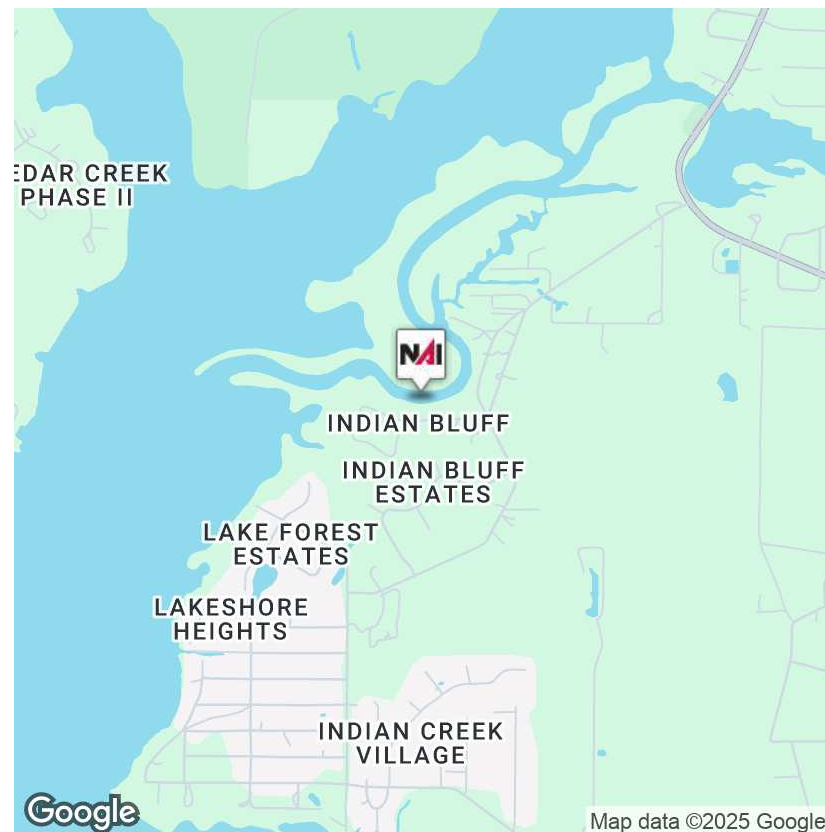


Land | 4.38 Acres

Property consists of +/-4.38 acres comprising of 8 plated residential lots located in the Deer Point Lake area. This property sits in Northern Bay County within minutes to the crystal clear sandy bottomed springs of Econfinia Springs, the rare coastal dune lakes that dot the coast of Walton County and is still close enough to enjoy the 27 miles of The World's Most Beautiful Beaches, Panama City Beach. Cherokee Landing Boat Ramp and Bay Head North Boat Ramp are within minutes to the property allowing for you to explore and fish the Chipola River, Deer Point Lake and many creeks in the area. If you are an outdoor enthusiast, then this is a great location to build your dream home and explore the natural beauty of the Northern Panhandle of Florida.

- +/-4.38 Acres
- 8 Plated Residential Lots

Sale Price: \$200,000



✉ **Tammy Huston**
+1 850 960 3624
tammy@talcor.com

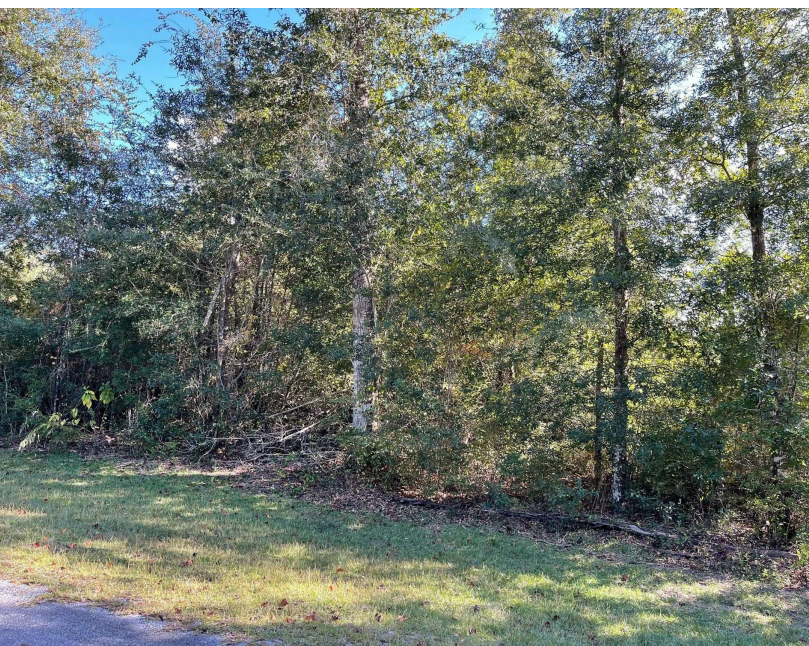
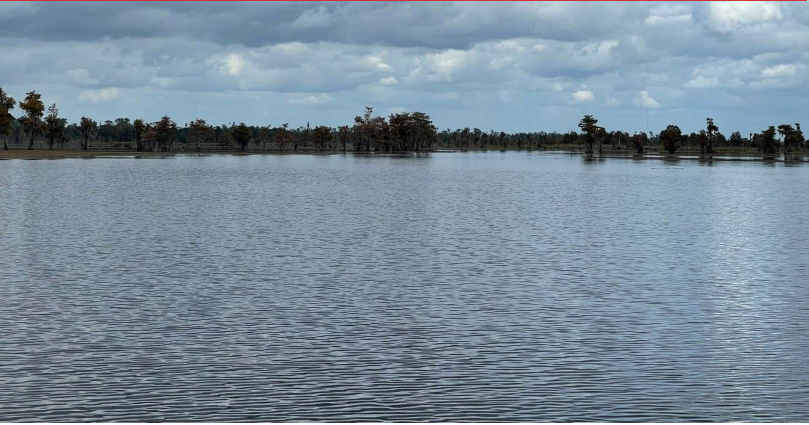
No Warranty Or Representation, Express Or Implied, Is Made As To The Accuracy Of The Information Contained Herein, And The Same Is Submitted Subject To Errors, Omissions, Change Of Price, Rental Or Other Conditions, Prior Sale, Lease Or Financing, Or Withdrawal Without Notice, And Of Any Special Listing Conditions Imposed By Our Principals No Warranties Or Representations Are Made As To The Condition Of The Property Or Any Hazards Contained Therein Are Any To Be Implied.



NAI TALCOR
17216 Panama City Beach Pkwy
talcor.com

FOR SALE

5320 Indian Bluff Dr Youngstown, FL 32466



Tammy Huston

+1 850 960 3624

tammy@talcor.com

No Warranty Of Representation, Express Or Implied, Is Made As To The Accuracy Of The Information Contained Herein, And The Same Is Submitted Subject To Errors, Omissions, Change Of Price, Rental Or Other Conditions, Prior Sale, Lease Or Financing, Or Withdrawal Without Notice, And Of Any Special Listing Conditions Imposed By Our Principals No Warranties Or Rep- resentations Are Made As To The Condition Of The Property Or Any Hazards Contained Therein Are Any To Be Implied.

NA TALCOR