



# Overlook Shopping Center

1439-1443 Main Street  
Watsonville, CA 95076



For Additional information, contact Exclusive Agent:

408.331.2308

Mark@BiaginiProperties.com

Vice President

**Mark Biagini DRE#00847403**

**Biagini Properties, Inc.**

333 W. El Camino Real, Suite 240

Sunnyvale, CA 94087

Rev. March 11, 2026

[www.biaginiproperties.com](http://www.biaginiproperties.com)



The information contained herein has been given to us by the owner of the property or other sources we deem reliable. We have no reason to doubt its accuracy, but we do not guarantee it. All information should be verified prior to purchase or lease.

For Additional information, contact Exclusive Agent:

**Mark Biagini DRE#00847403**

Vice President

Mark@BiaginiProperties.com

408.331.2308



### Property Description

Great location at Main entrance off of Ohlone Parkway and signalized Intersection on Highway 152 (Main Street). Shop space in a 270,000 SF power center with over 38 tenants on 25 acres. Primary shopping destination in Watsonville with high visibility and foot traffic in a busy intersection with high traffic counts at Main Street and Ohlone Parkway.

### Location Description

Welcome to the vibrant neighborhood Power Center in Watsonville. A prime location for Retail/Street Retail tenants. Nestled in the heart of the city, the area offers a diverse mix of shopping, dining, and entertainment options, making it an ideal destination for businesses seeking high foot traffic. Nearby, the historic downtown district, the Pajaro Valley Historical Association, and the Green Valley Cinema provide a range of activities for locals and visitors alike. With a strong sense of community and a bustling atmosphere, this location presents a prime opportunity for retail businesses to thrive and become an integral part of the lively Watsonville scene.



The information contained herein has been given to us by the owner of the property or other sources we deem reliable. We have no reason to doubt its accuracy, but we do not guarantee it. All information should be verified prior to purchase or lease.

For Additional information, contact Exclusive Agent:

**Mark Biagini DRE#00847403**

Vice President

Mark@BiaginiProperties.com

408.331.2308



**Offering Summary**

Lease Rate:	Negotiable
Estimated NNN Charges	\$1.56 SF/month - 2026
Number Of Units:	14
Available SF:	1,080 - 1,600 SF
Lot Size:	42,253 Acres
Building Size:	11,467 SF

**All Spaces Are:**

- Fire Sprinklered & 100% HVAC
- 100% Drop T-Bar Ceiling with 2' x 4' Drop-in Fluorescent Lights
- Separately Metered For: Water, HVAC, Electrical (200 Amp; 3 PH; 4 W; 120/208V)

**Property Highlights**

- Primary Shopping Destination in Watsonville
- 270,000 SF Power Center with Over 38 Tenants on 25 Acres
- Signalized Intersection on Hwy 152 (Main Street) and Ohlone Parkway
- High Visibility and Foot Traffic
- Major Anchor Tenants (Target, Ross Dress For Less, FoodMaxx)
- Freestanding Retail Pad Location Fronts Hwy 152
- Abundant Parking - 1,315 Parking Stalls (5/1,000)
- Fire Sprinklered Building



The information contained herein has been given to us by the owner of the property or other sources we deem reliable. We have no reason to doubt its accuracy, but we do not guarantee it. All information should be verified prior to purchase or lease.

For Additional information, contact Exclusive Agent:

**Mark Biagini DRE#00847403**

Vice President

Mark@BiaginiProperties.com

408.331.2308



### Lease Information

Lease Type:	NNN	Lease Term:	Negotiable
Total Space:	1,080 - 1,600 SF	Lease Rate:	Negotiable

### Available Spaces

Suite	Tenant	Size (SF)	Lease Type	Lease Rate	Description
■ 1441-#101 Main Street	Available	1,080 SF	NNN	Negotiable	± 19' W x 57' D. Formerly Repair All Electronics. 100% Drop t-bar ceiling with 2' x 4' drop-in fluorescent lights, 10' Above Finish Floor, separate HVAC, separate electrical (42 circuits; 200 amps; 3 PH; 4W; 120/208V), 1 ADA restroom, slat walls, lockable security screen system, upgraded laminate flooring throughout, storage room. Available Now.
■ 1441-#102 Main Street	Available	1,600 SF	NNN	Negotiable	21' W x 75' D. Former GameStop. Open area, lockable security screen system, 100% Drop t-bar ceiling with 2' x 4' drop-in fluorescent lights, 10' AFF, 2 ADA restrooms, stock room, storage room, utility room, separate HVAC, separate electrical, rear door. Available Now.



The information contained herein has been given to us by the owner of the property or other sources we deem reliable. We have no reason to doubt its accuracy, but we do not guarantee it. All information should be verified prior to purchase or lease.

For Additional information, contact Exclusive Agent:

**Mark Biagini DRE#00847403**

Vice President

Mark@BiaginiProperties.com

408.331.2308

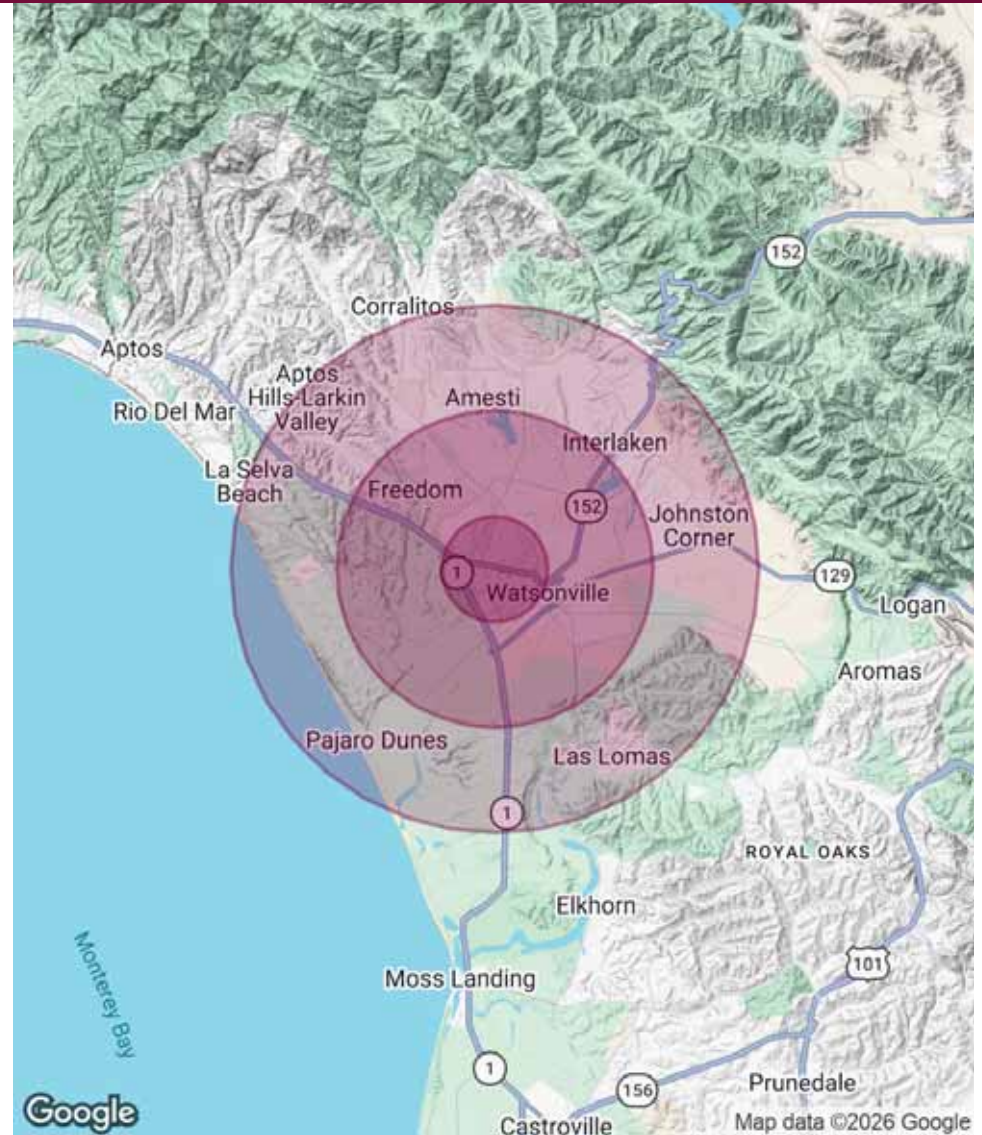
Population	1 Mile	3 Miles	5 Miles
Total Population	23,879	65,015	80,167
Average Age	35	36	37
Average Age (Male)	34	36	36
Average Age (Female)	36	37	38

Households & Income	1 Mile	3 Miles	5 Miles
Total Households	6,167	17,503	21,810
# of Persons per HH	3.9	3.7	3.7
Average HH Income	\$112,314	\$112,447	\$118,449
Average House Value	\$690,796	\$731,487	\$788,308

\* Demographic data derived from 2020 ACS - US Census

**Traffic Counts 24 Hour ADT 2018**

Ohlone Parkway at Main Street	14,400
Main Street at Auto Center Drive	27,868
Main Street at State Route 152	29,900
State Route 1 at Harkins Slough Road	48,000



The information contained herein has been given to us by the owner of the property or other sources we deem reliable. We have no reason to doubt its accuracy, but we do not guarantee it. All information should be verified prior to purchase or lease.

For Additional information, contact Exclusive Agent:

**Mark Biagini DRE#00847403**

Vice President

Mark@BiaginiProperties.com

408.331.2308

### Overlook Shopping Center

1415-1493 Main Street

Watsonville, California 95076

- |    |           |                            |
|----|-----------|----------------------------|
| 1. | 1439      | AT & T Wireless            |
| 2. | 1441-#103 | Freeway Insurance Services |
| 3. | 1441-#102 | 1,600 Square Feet          |
| 4. | 1441-#101 | 1,080 Square Feet          |
| 5. | 1441      | Sushi Garden Restaurant    |
| 6. | 1443      | Don Roberto Jewelers       |

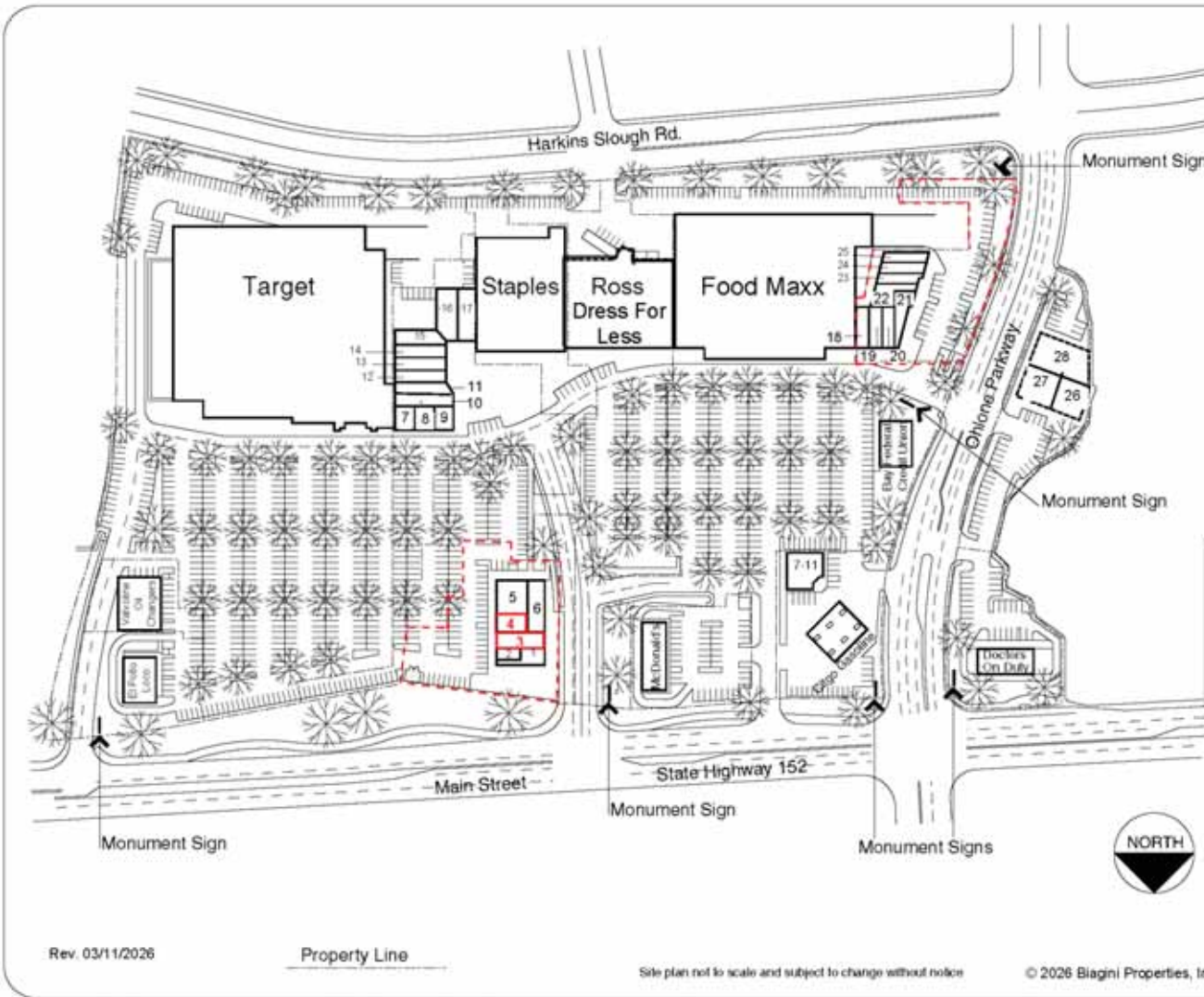
- OWNED BY OTHERS**
- 7. Sally Beauty Supply
  - 8. T-Mobile
  - 9. Vista Eye Center
  - 10. La Buena Taqueria
  - 11. La Buena Taqueria
  - 12. GNC Health Store
  - 13. For Lease
  - 14. For Lease
  - 15. Sukho Thai Restaurant
  - 16. For Lease - 3,000 SF
  - 17. La Michoacana Ice Cream Parlor

- |     |           |                               |
|-----|-----------|-------------------------------|
| 18. | 1483      | Wing Stop Restaurant          |
| 19. | 1485      | Tutoring Club                 |
| 20. | 1487-#101 | Cricket Wireless              |
| 21. | 1487-#102 | YogurtLand                    |
| 22. | 1489-#101 | Optica Gonzalez Ophthalmology |
| 23. | 1489-#102 | Pro Top Nails Salon           |
| 24. | 1491      | Arcadia Hair Salon            |
| 25. | 1493      | True Blends Barbershop        |

- 26. Panda Express Chinese Restaurant
- 27. Mattress Firm
- 28. Century 21 Real Estate



333 W. El Camino Real, Suite 240  
 Sunnyvale, CA 94087-1969  
 Phone (408) 331-2300  
 Fax (408) 331-2301



Rev. 03/11/2026

Property Line

Site plan not to scale and subject to change without notice

© 2026 Biagini Properties, Inc. All rights reserved.



The information contained herein has been given to us by the owner of the property or other sources we deem reliable. We have no reason to doubt its accuracy, but we do not guarantee it. All information should be verified prior to purchase or lease.

For Additional information, contact Exclusive Agent:

**Mark Biagini DRE#00847403**

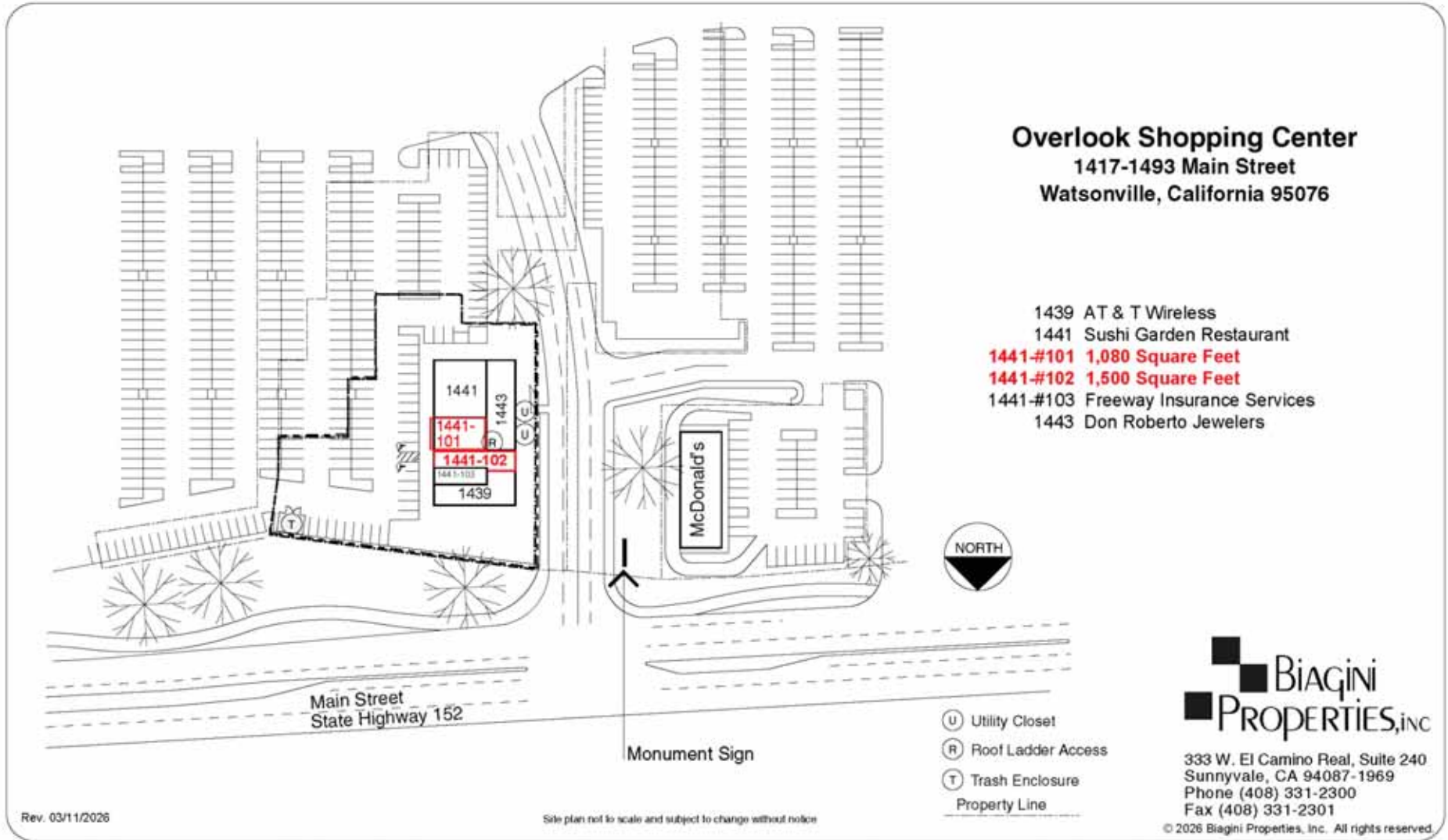
Vice President

Mark@BiaginiProperties.com

408.331.2308

**Overlook Shopping Center**  
 1417-1493 Main Street  
 Watsonville, California 95076

- 1439 AT & T Wireless
- 1441 Sushi Garden Restaurant
- 1441-#101 1,080 Square Feet**
- 1441-#102 1,500 Square Feet**
- 1441-#103 Freeway Insurance Services
- 1443 Don Roberto Jewelers



The information contained herein has been given to us by the owner of the property or other sources we deem reliable. We have no reason to doubt its accuracy, but we do not guarantee it. All information should be verified prior to purchase or lease.

For Additional information, contact Exclusive Agent:

**Mark Biagini DRE#00847403**

Vice President

Mark@BiaginiProperties.com

408.331.2308





1441-101 Main Street



1441-101 Main Street - Interior



1441-101 Main Street - Interior



1441-101 Main Street - Interior



1441-101 Main Street - Interior



1441-101 Main Street - Interior



The information contained herein has been given to us by the owner of the property or other sources we deem reliable. We have no reason to doubt its accuracy, but we do not guarantee it. All information should be verified prior to purchase or lease.

For Additional information, contact Exclusive Agent:

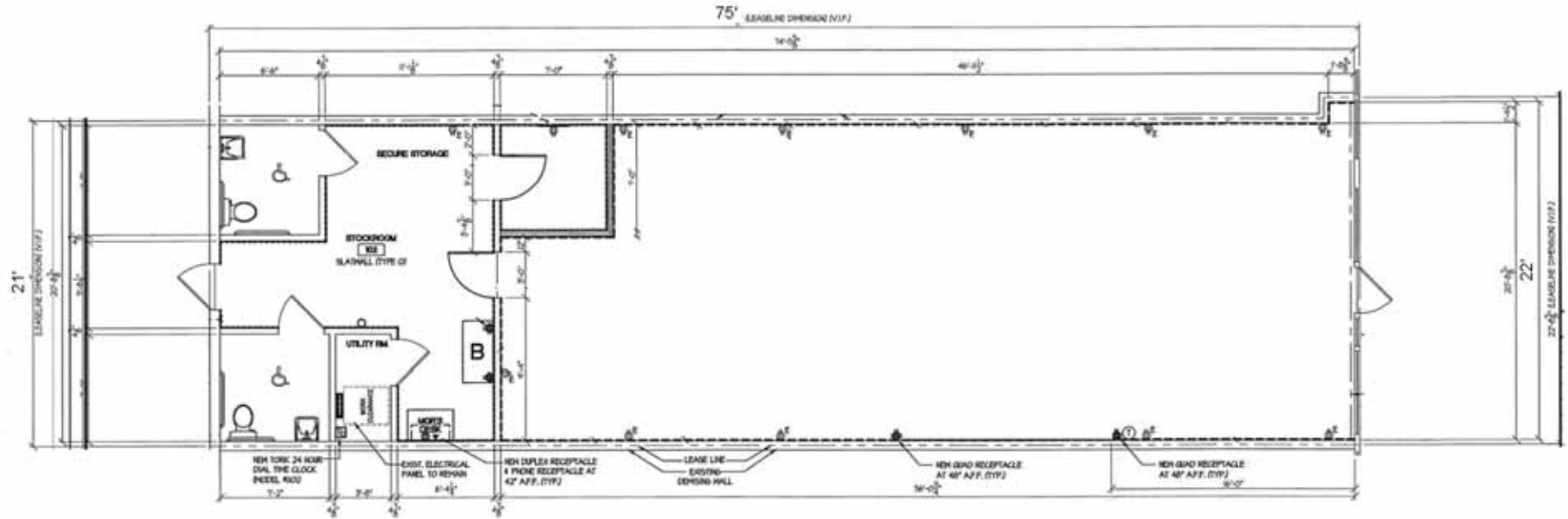
**Mark Biagini DRE#00847403**

Vice President

Mark@BiaginiProperties.com

408.331.2308

1441-#102 Main Street | Watsonville, CA  
 95076 ± 1,600 Square Feet (± 21' W x 75' D)



Rev. 09-8-2015 © 2026 Biagini Properties, Inc. All rights reserved.

- Open Area
- Lockable Security Screen System
- 100% Drop T-Bar Ceiling
- 2' x 4' Drop-in Fluorescent Lights, 10' Above Finish Floor (AFF)
- 2 ADA Restrooms
- Stock Room
- Storage Room
- Utility Room
- Separate HVAC
- Separate Electrical
- Rear Door



The information contained herein has been given to us by the owner of the property or other sources we deem reliable. We have no reason to doubt its accuracy, but we do not guarantee it. All information should be verified prior to purchase or lease.

For Additional information, contact Exclusive Agent:

**Mark Biagini DRE#00847403**

Vice President

Mark@BiaginiProperties.com

408.331.2308





The information contained herein has been given to us by the owner of the property or other sources we deem reliable. We have no reason to doubt its accuracy, but we do not guarantee it. All information should be verified prior to purchase or lease.

For Additional information, contact Exclusive Agent:

**Mark Biagini DRE#00847403**

Vice President

Mark@BiaginiProperties.com

408.331.2308