

**CBRE**



HANOVER  
PLACE

LOUISVILLE

Premium St. Matthews Office Opportunity  
Available For Lease

4500 BOWLING BOULEVARD, LOUISVILLE, KY



# The Opportunity

Discover Hanover Place, a prime office location in St. Matthews, built in 1997. Enjoy unparalleled access to downtown and the East End, with the lowest vacancy rate in the market.

Benefit from a traditional office environment surrounded by a wealth of amenities, including restaurants, hospitality, fitness centers, and shopping, all within a mile. Easy access to I-64 and I-264 ensures convenient commutes for your team.

Strategically located in the Dupont Medical District, Hanover Place is ideal for medical professionals, being less than a half mile from three major hospitals.

The beautiful two-story lobby, with high-end finishes makes a spectacular first impression for tenants and their clientele. The ample surface parking enhances convenience for employees and visitors.

The entire 2nd floor is available “Plug & Play,” complete with furniture, ready for immediate occupancy.

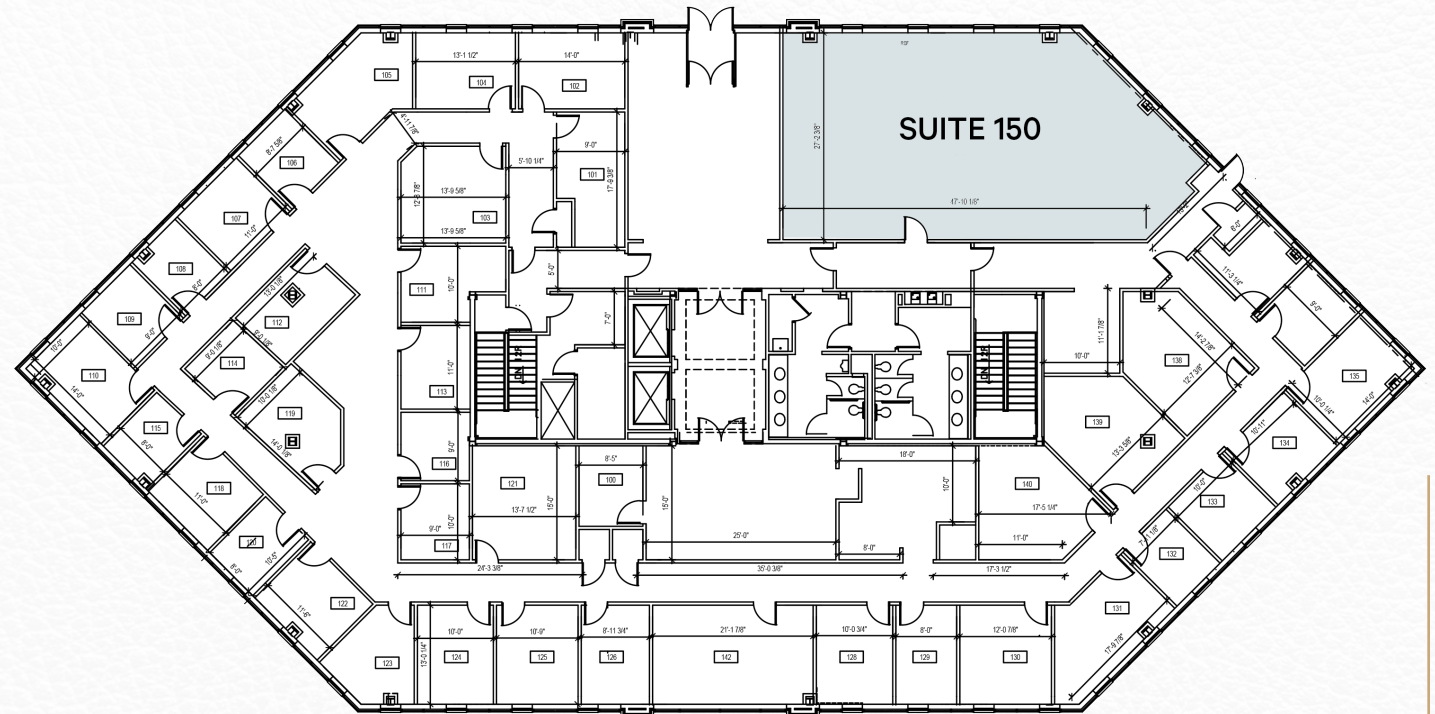






# First Floor

±1,752 SF  
AVAILABLE



## SPACE INCLUDES

- Reception
- (4) Private Offices
- (1) Conference Room
- Break Area
- Storage/Work Room
- IT



# Perfectly Positioned

BETWEEN THE DUPONT MEDICAL DISTRICT AND ST. MATTHEWS RETAIL AMENITIES

## Demographics

Within 5 Miles in 2025



Population:  
235,939



Employees:  
167,311



Average Household  
Income:  
\$113,885





## Contact

**Rick Ashton, CCIM**  
Senior Vice President  
+1 502 412 7612  
rick.ashton@cbre.com

©2026 CBRE, Inc. All rights reserved. This information has been obtained from sources believed reliable, but has not been verified for accuracy or completeness. You should conduct a careful, independent investigation of the property and verify all information. Any reliance on this information is solely at your own risk. CBRE and the CBRE logo are service marks of CBRE, Inc. All other marks displayed on this document are the property of their respective owners, and the use of such logos does not imply any affiliation with or endorsement of CBRE. Photos herein are the property of their respective owners. Use of these images without the express written consent of the owner is prohibited. PMStudio\_April2024