

AVAILABLE

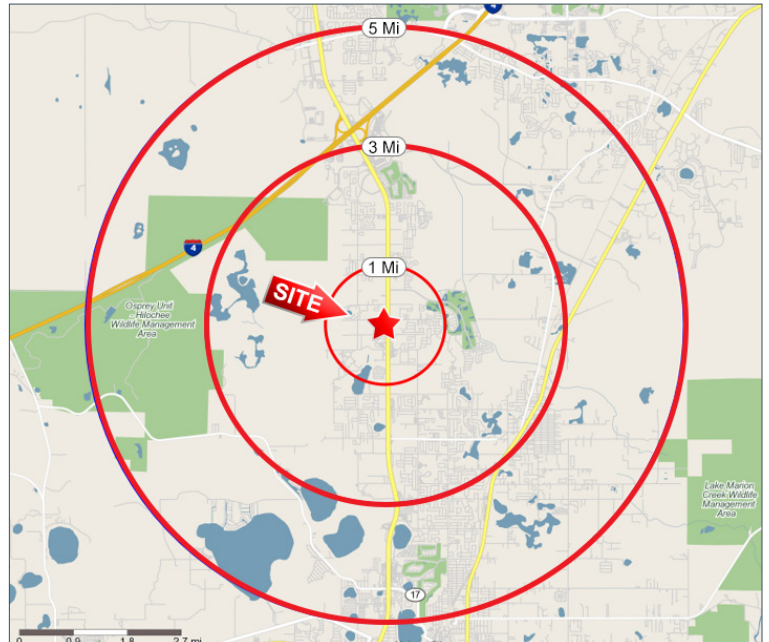
US Hwy 27 & Holly Hill Tank Rd | Davenport | FL 33837



PROPERTY HIGHLIGHTS

- 1.62± acres¹
- Hard corner.
- Highly trafficked area, 72,576 ADDT.
- US Hwy 27 frontage.
- Huge residential and commercial growth area.
- Cross access with retail center.
- Proposed signal at the intersection.

Demographics	1-Mile	3-Mile	5-Mile
Population	2,491	22,829	46,279
Growth 2022-2027	23.2%	21.7%	17.5%
Average HH Income	\$69,343	\$74,126	\$68,975
Median Age	41.1	45.5	42.2



Gradon Willard

321-287-1322

Gradon@blurockcommercial.com

3408 S. Orange Ave.

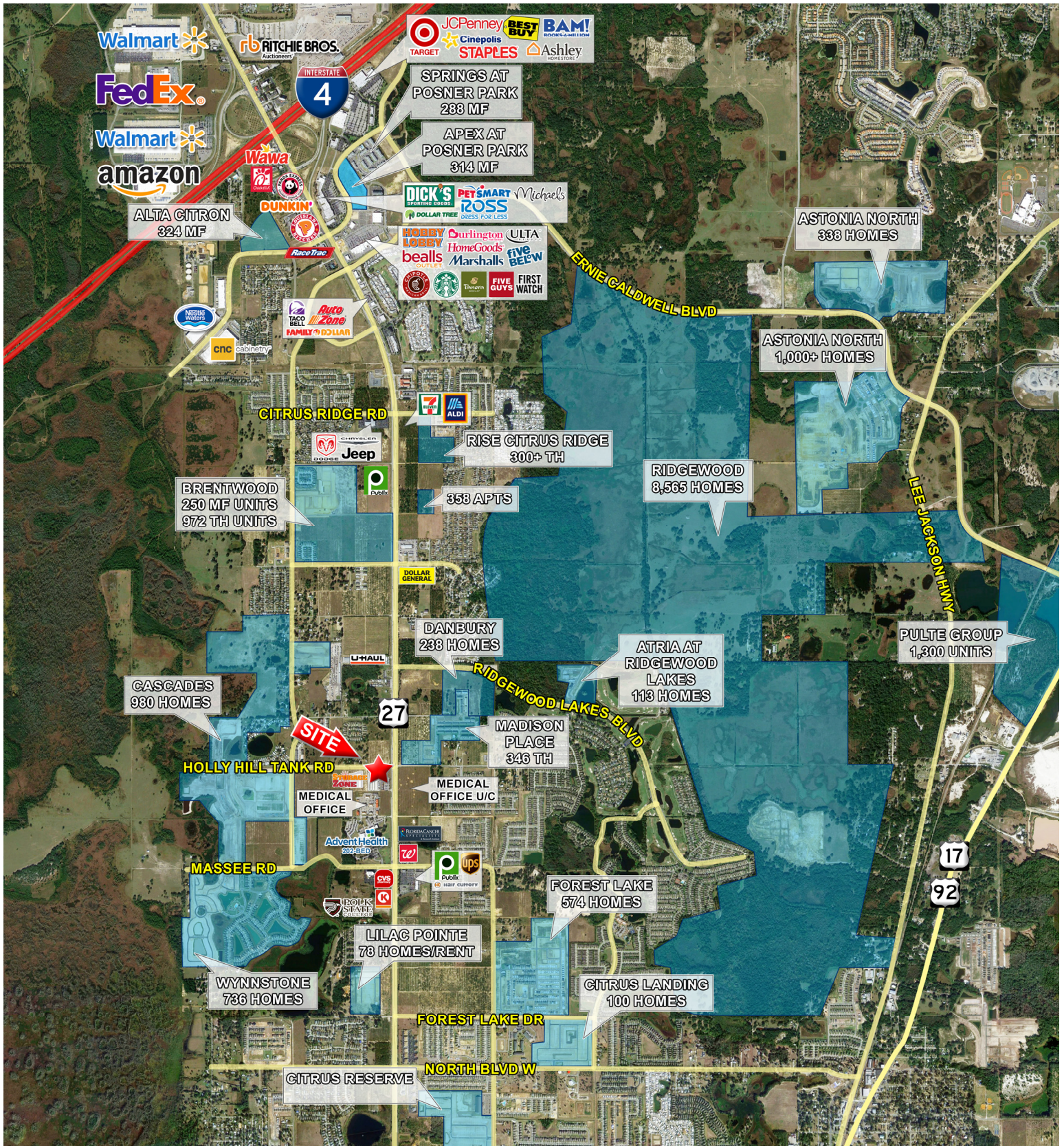
Suite B

Orlando, FL 32806

www.blurockcommercial.com

AVAILABLE

US Hwy 27 & Holly Hill Tank Rd | Davenport | FL 33837



Gradon Willard

321-287-1322

Gradon@blurockcommercial.com

3408 S. Orange Ave.

Suite B

Orlando, FL 32806

www.blurockcommercial.com