

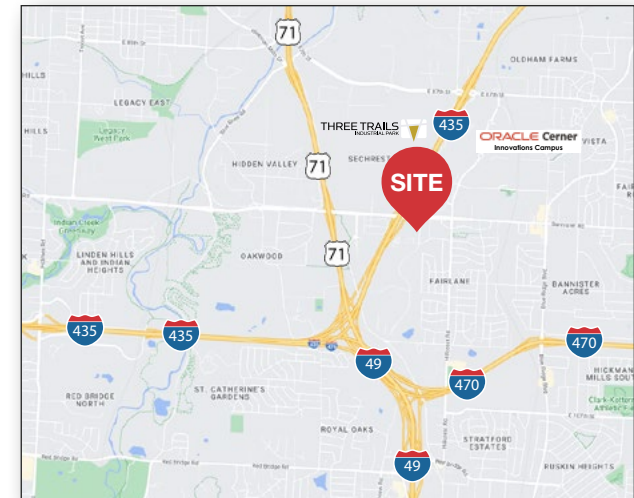


9668 - 9680 Marion Ridge Dr
Kansas City, MO

Property Info

- Modern, single-story flex/warehouse buildings in gated business park environment with recently renovated office
- Convenient access to Interstate 435, Interstate 470 and 71 Highway
- **Suite 9678:**
± 2,481 SF
Drive-in loading available
\$2,470.66 per month gross Plus CAM

* CAM - Common Area Maintenance includes items such as snow removal, lawn care, water, sewer, exterior lighting and property management.



For more information:

Evan Calkins

+1 913 890 2017
evan@nai-heartland.com

Joe O'Neill, CCIM

+1 913 890 2010
joe@nai-heartland.com

4400 College Boulevard Suite 170
Overland Park, Kansas 66211
913 362 1000

nai-heartland.com

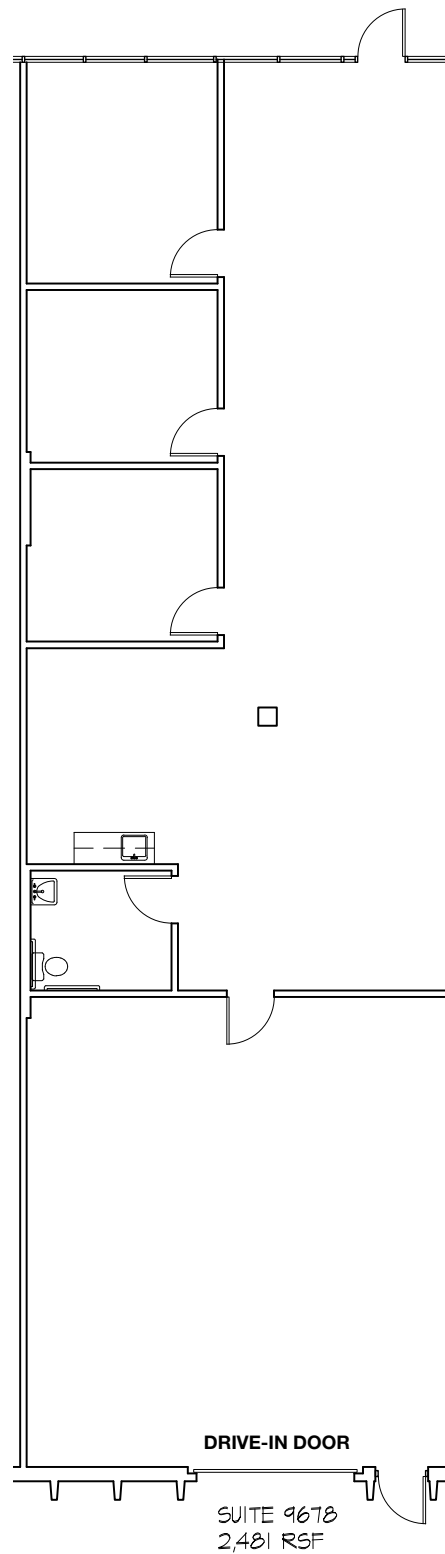
For Lease

Flex/Warehouse Space

Marion Ridge Dr, Kansas City, MO

Suite 9678:

EXISTING FLOOR PLAN



For more information:

Evan Calkins

+1 913 890 2017
evan@nai-heartland.com

Joe O'Neill, CCIM

+1 913 890 2010
joe@nai-heartland.com



DRIVE-IN DOOR

SUITE 9678
2,481 RSF

4400 College Boulevard Suite 170
Overland Park, Kansas 66211
913 362 1000
nai-heartland.com

For Lease
Flex/Warehouse Space
Marion Ridge Dr, Kansas City, MO

THREE TRAILS
INDUSTRIAL PARK



ORACLE Center
Innovations Campus

KCFD



E Bannister Rd



E Bannister Rd



KCMO Police
Headquarters



ORACLE Center
Realizations Campus

Hickman Mills Dr



Suite 9678

NAI Heartland



For more information:
Evan Calkins
+1 913 890 2017
evan@nai-heartland.com

Joe O'Neill, CCIM
+1 913 890 2010
joe@nai-heartland.com