

1911 Church St

3,000-7,294 SF RETAIL / MEDICAL / CREATIVE OFFICE / LIGHT PRODUCTION SPACE



Property Overview

1911 CHURCH ST
NASHVILLE, TN 37203

1911 Church St is located in the Midtown neighborhood of Nashville, close to many upcoming developments, medical systems, hospitality, retail, and food and beverage properties. The property offers 28 spots of dedicated on-site parking, high ceilings, and a fully-conditioned production space with a dock-high door.

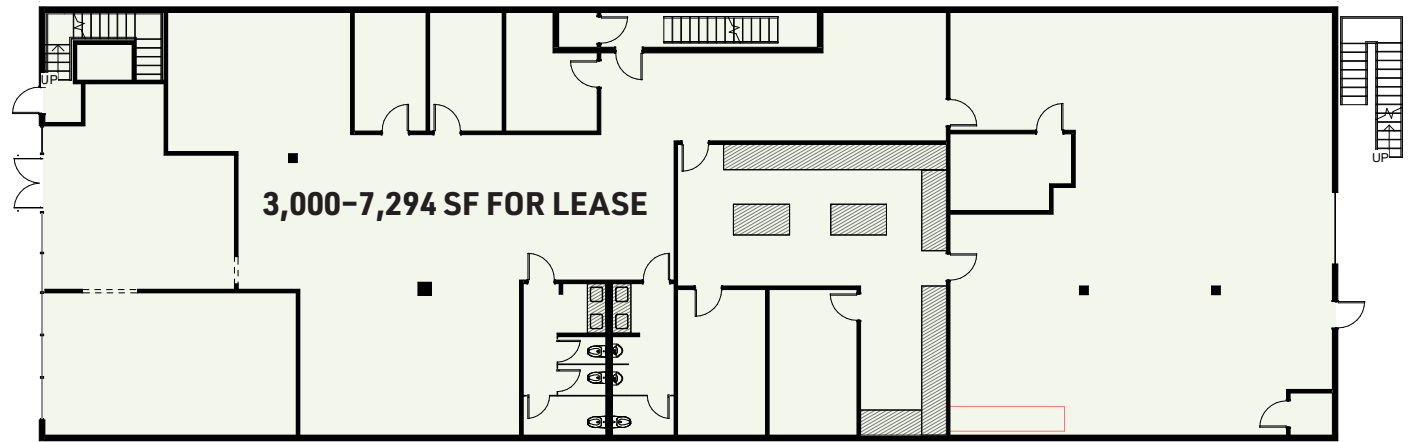


Floor Plan

3,000-7,294 SF FOR LEASE

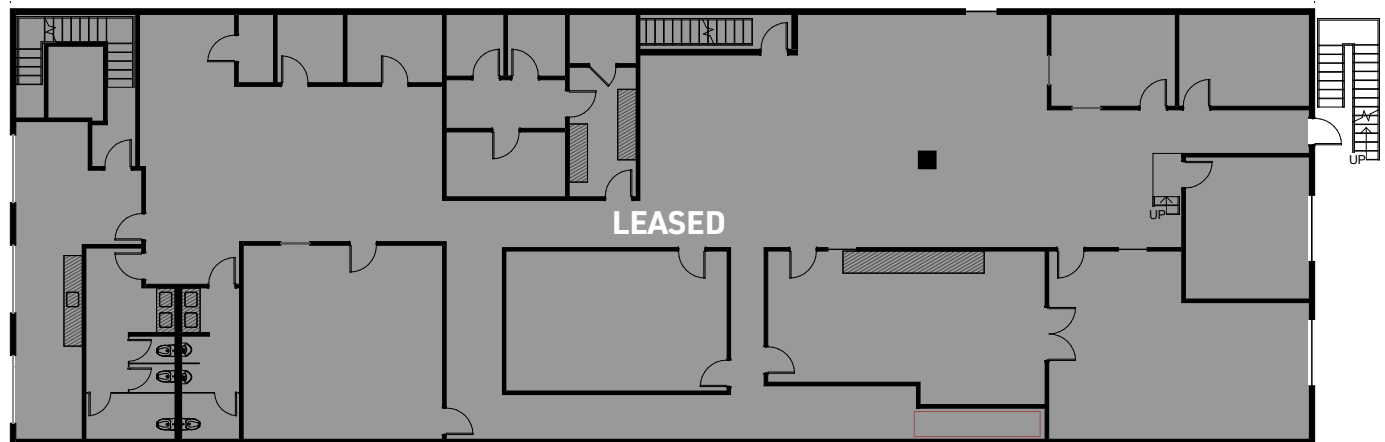
RETAIL/MEDICAL/CREATIVE OFFICE/LIGHT PRODUCTION SPACE

FLOOR 1



CHURCH STREET

FLOOR 2



Area Map

RESIDENTIAL

- 2. Lee Apartments
- 3. Infinity Midtown
- 4. Apollo Midtown
- 5. Artemis Midtown
- 6. State Street Flats
- 7. Louise Avenue Apartments
- 8. 1818 Church
- 9. Olympus Midtown
- 10. Margaux Midtown
- 11. Elliston 23
- 12. Aertson Midtown
- 13. The Broadview at Vanderbilt
- 14. Fallyn Apartments
- 15. Artisan on 18th
- 16. Millennium Music Row
- 17. SkyHouse Nashville
- 18. Camden Music Row
- 19. Infinity Music Row

RETAIL

- 20. HiFi Clyde's
- 21. Chick-fil-A
- 22. The Row Kitchen & Pub
- 23. Amerigo
- 24. Jimmy Kelly's Steakhouse
- 25. Hall's Chophouse
- 26. Midtown Cafe

HOSPITALITY

- 27. Hutton Hotel
- 28. Hyatt House
- 29. Loews Vanderbilt Hotel
- 30. The Graduate Hotel
- 31. Hampton Inn & Suites
- 32. Homewood Suites
- 33. Hilton Garden Inn
- 34. Home2 Suites by Hilton
- 35. Embassy Suites

HEALTHCARE

- 36. TriStar Centennial Medical Center
- 37. Ascension Saint Thomas Hospital
- 38. Vanderbilt Medical Center

★ 1911 CHURCH ST



Gallery



1911 Church St

CAMERON BICE

cbice@sagemontre.com
205.335.0105

MATT COOPER

mcooper@sagemontre.com
615.319.0124

LANIER DANIEL

ldaniel@sagemontre.com
404.805.5459

