



**HIGH \$20S PSF**

**85**

**MERRIMAC  
STREET**  
BOSTON, MA

**Multiple Floors  
Available Now!**

Floor 2 (full floor) - 5,450 SF

Floor 4 - 2,684 SF

Floor 5 - 1,837 SF



Immediate access to public transportation on MBTA Green Line, Orange Line and Commuter Rail



Steps from numerous restaurants, hotels, retail, and public parking



High ceilings & oversized windows



Abundant natural light



Only building in Bulfinch Triangle on the National Register of Historic Places

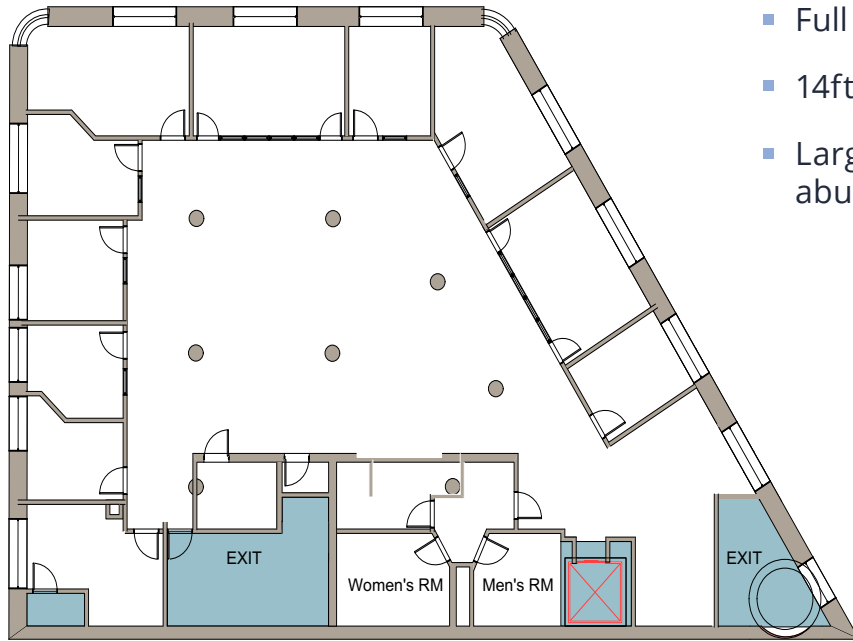
**Kirk Weller**, Senior Vice President  
617.456.1363  
kirk.weller@avisonyoung.com

**Jeff Gates**, Principal  
617.595.6015  
jeff.gates@avisonyoung.com

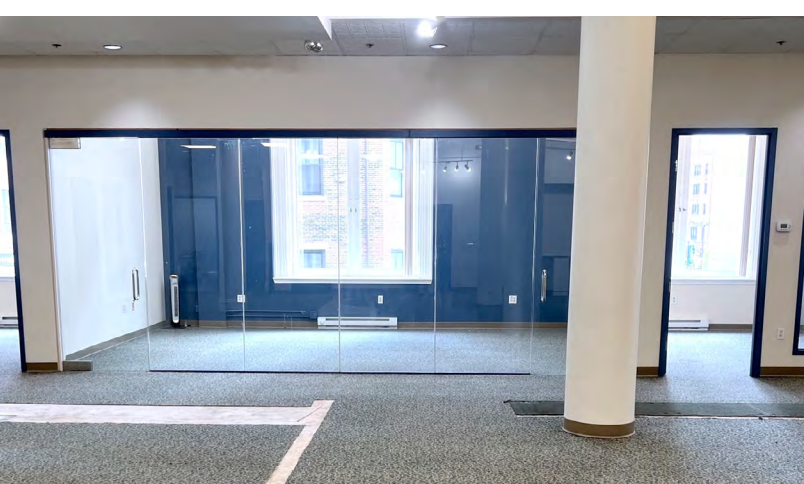
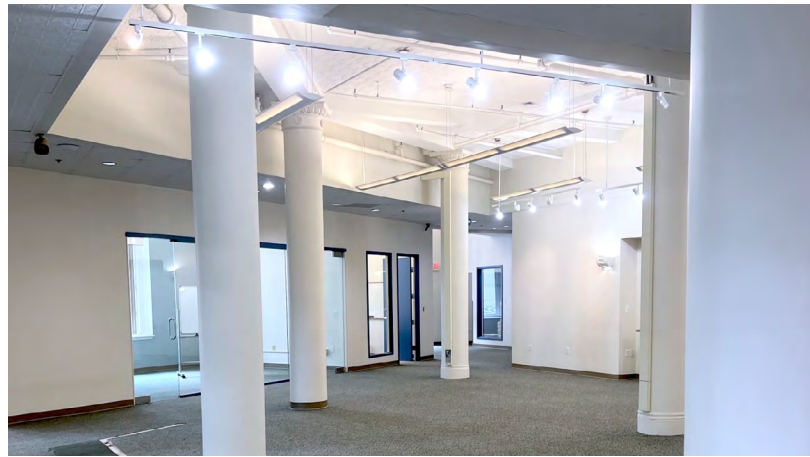
**AVISON  
YOUNG**



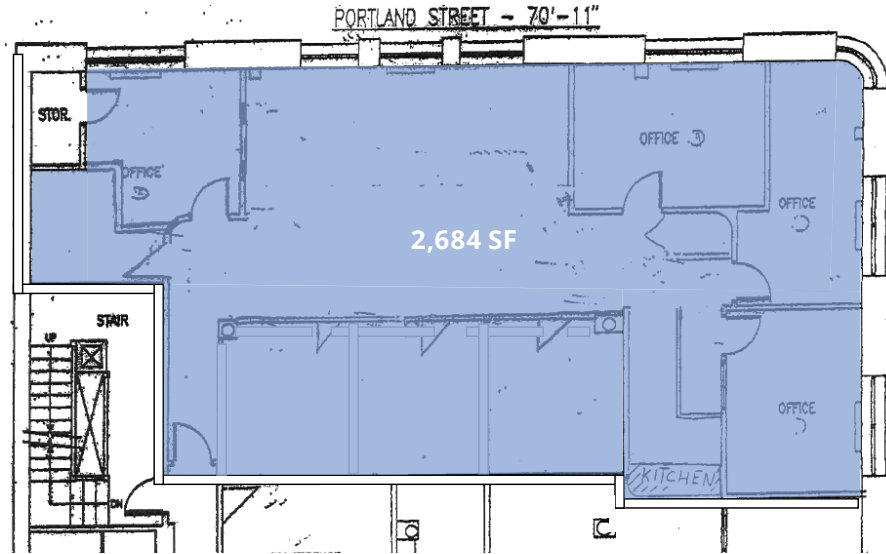
## FLOOR 2 | 5,450 SF



- Full floor opportunity
- 14ft ceilings
- Large windows providing abundant natural light

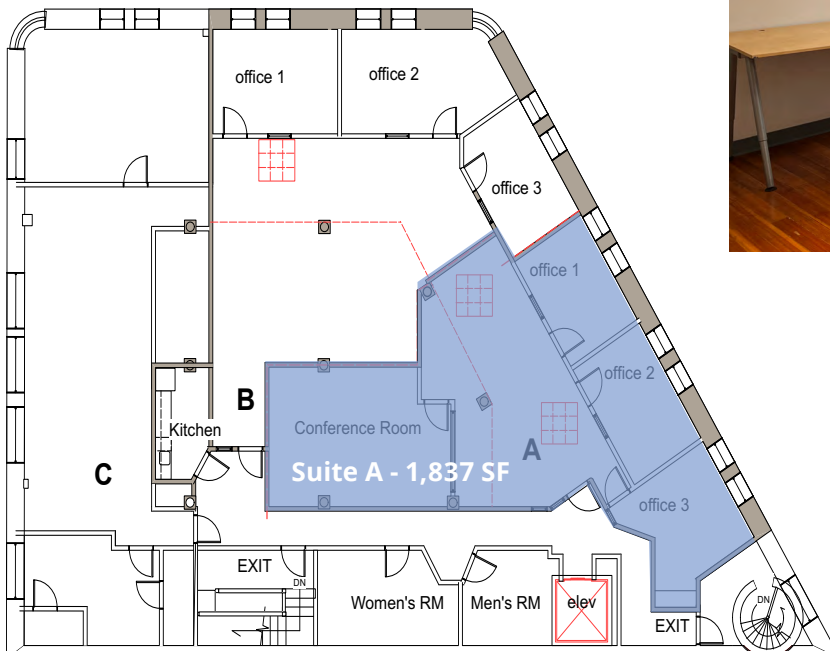


## FLOOR 4 | 2,684 SF



## FLOOR 5 (SUITE A) | 1,837 SF

- Spec suite build-out
- 9ft ceilings
- Exposed, high ceilings with skylights providing abundant natural light
- Shared kitchen area







# 85

MERRIMAC  
STREET

BOSTON, MA

**For more information, please contact:**

**Kirk Weller**, Senior Vice President

617.456.1363

[kirk.weller@avisonyoung.com](mailto:kirk.weller@avisonyoung.com)

**Jeff Gates**, Principal

617.595.6015

[jeff.gates@avisonyoung.com](mailto:jeff.gates@avisonyoung.com)

200 State Street, Floor 15, Boston, MA 02109

© 2025. Avison Young. Information contained herein was obtained from sources deemed reliable and, while thought to be correct, have not been verified. Avison Young does not guarantee the accuracy or completeness of the information presented, nor assumes any responsibility or liability for any errors or omissions therein.

**AVISON  
YOUNG**