

SANIBEL ISLAND LEASE SPACE Office/Retail/Medical Uses

1530 Periwinkle Way
Sanibel, Florida 33957

**Boback
Commercial
Group**
Commercial Sales & Leasing



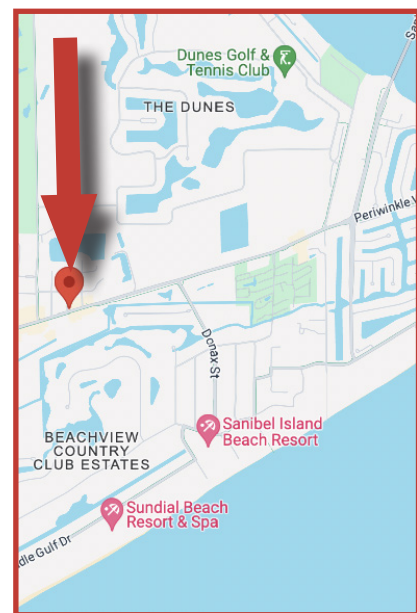
FOR LEASE: \$30 PSF + \$6.60 CAM

ABOUT THE PROPERTY

High visibility location on Periwinkle Way. Liberal GC zoning allows a multitude of retail/office/medical uses. 2nd floor space with an elevator. Pre Hurricane Irma, the space was used as a veterinarian office and the current floor plan reflects the same layout. Interior has been remediated post storm damage but not fully rebuilt. The owner will contribute to reconstruction based on tenant's use.

PROPERTY FEATURES

- 1,125 +/- Sqft
- High visibility location on Periwinkle Way
- Zoning: Liberal GC commercial zoning - Sanibel FL
- Strap#: 19-46-23-T4-00903.0040\
- 2nd floor space with elevator.
- Heavy seasonal and local traffic area
- Utilities: Water & Sewer



JIM BOBACK, CCIM
Broker/Owner

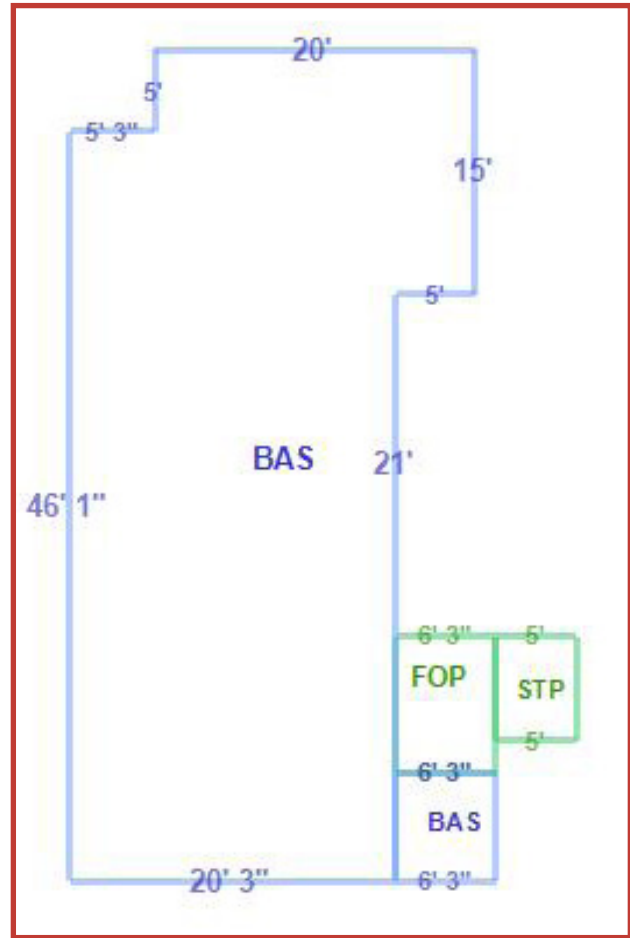
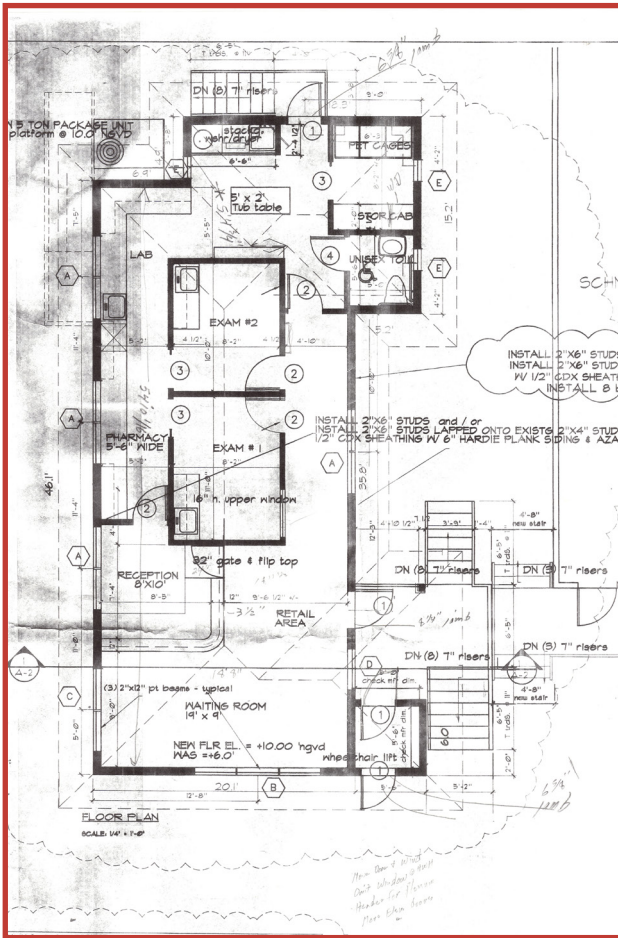
C 239-565-2616 • O 239-466-7770
JB@BobackCommercialGroup.com
www.BobackCommercialGroup.com

This document has been prepared by Boback Commercial Group for advertising and general information only. Boback Commercial Group makes no guarantees, representations or warranties of any kind, expressed or implied, regarding the information including, but not limited to, warranties of content, accuracy and reliability. Any interested party should undertake their own inquiries as to the accuracy of the information.

SANIBEL ISLAND LEASE SPACE Office/Retail/Medical Uses

1530 Periwinkle Way
Sanibel, Florida 33957

FLOOR PLANS



TRAFFIC COUNT (ADDT 2023)

Periwinkle Way 22,000

JIM BOBACK, CCIM
Broker/Owner

C 239-565-2616 • O 239-466-7770
JB@BobackCommercialGroup.com
www.BobackCommercialGroup.com