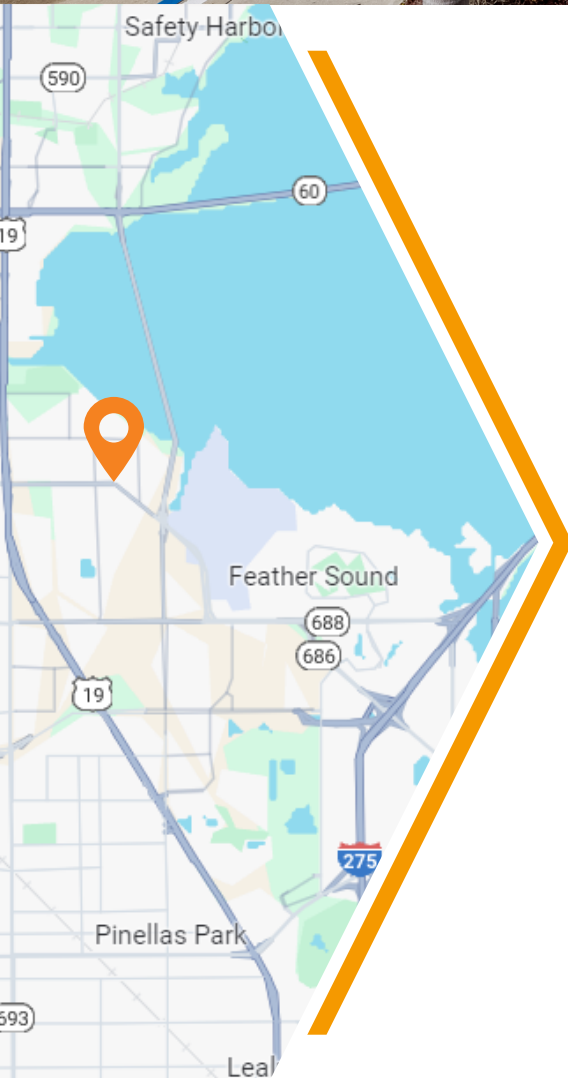


5501-5545 Roosevelt Blvd., Clearwater, FL 33760

**BAY VISTA**

**3,240 SF  
Available**



## 3,240 SF 2ND-GEN MEDICAL SPACE AVAILABLE

- » Close proximity to major retailers including Starbucks, Chipotle, McDonalds, and more
- » Strategic location between the Bayside Bridge & US 19
- » Located at the entrance to Bay Vista Business Park with 350,000+ SF
- » Direct frontage to Roosevelt Blvd (39,500 AADT )
- » Minutes from St. Pete–Clearwater International Airport
- » Prominent pylon signage

Demographics	1-mile	3-mile	5-mile
2025 Population	10,701	61,053	180,866
Daytime Employment	5,490	46,163	130,082
Average HH Income	\$88,154	\$87,372	\$86,558
Median Age	38.6	45.9	46.3

**Leasing Contact:** Heather McMillin | Senior Vice President, Retail Leasing  
(Office) 813-533-0852 | [hmcillin@rpm-realty.com](mailto:hmcillin@rpm-realty.com)



# BAY VISTA

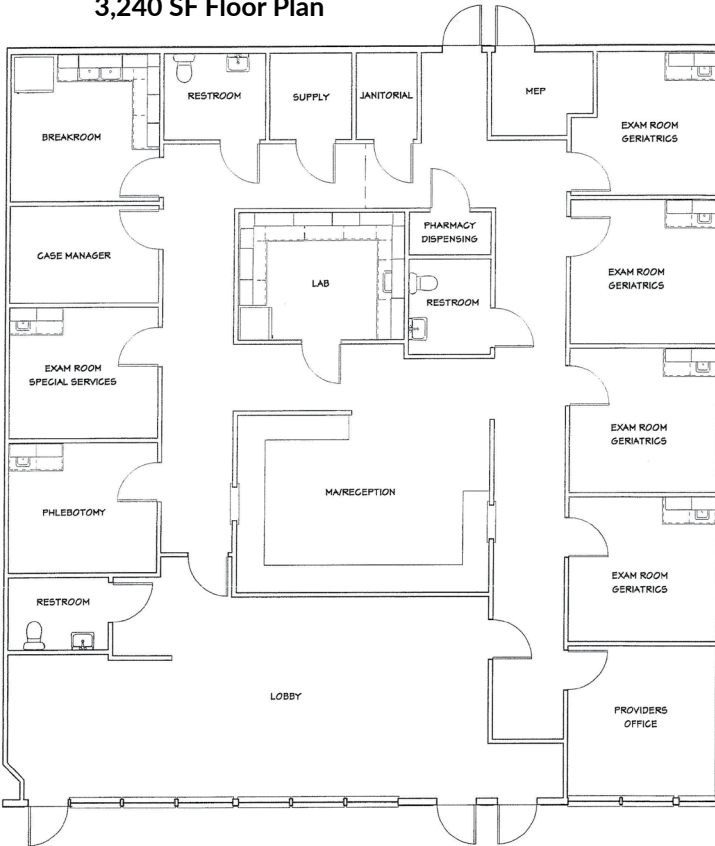
5501-5545 Roosevelt Blvd., Clearwater, FL 33760



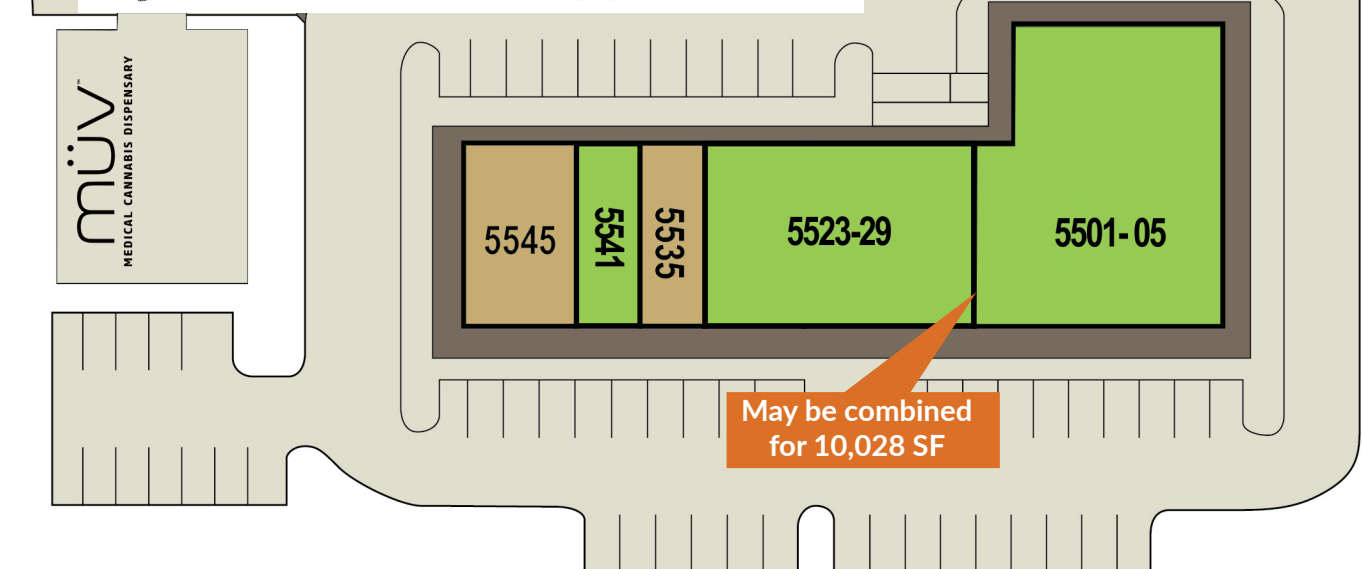
The information contained herein was obtained from sources believed reliable; however, RPM Realty Management, LLC makes no guarantees, warranties, or representations as to the completeness or accuracy thereof. The presentation of this property is submitted subject to errors, omissions, change of price or conditions prior to sale or lease, or withdrawal without notice.



**2nd-Gen Medical  
3,240 SF Floor Plan**



SUITE	TENANT	SF
5545	Thai Dish Restaurant	1,530
5541	AVAILABLE	1,110
5535	Zona Pharmaceuticals	1,053
5523-29	AVAILABLE 2ND-GEN MEDICAL	3,240
5501-05	AVAILABLE 2ND-GEN EVENT SPACE	6,788



**ROOSEVELT BOULEVARD**

The information contained herein was obtained from sources believed reliable; however, RPM Realty Management, LLC makes no guarantees, warranties, or representations as to the completeness or accuracy thereof. The presentation of this property is submitted subject to errors, omissions, change of price or conditions prior to sale or lease, or withdrawal without notice.

