



FOR LEASE FULL FLOOR OFFICE SPACE

*Newly renovated creative full
floor office space for lease*

986 MISSION STREET
SAN FRANCISCO, CA 94103

Suite	RSF	Available	Asking Rate
SUITE 500	±8,090	Now	\$26.00 IG
SUITE 400	±8,090	Now	\$22.00 IG
SUITE 300	±8,090	Now	\$22.00 IG
BASEMENT 1	±3,000	Now	Negotiable
BASEMENT 2	±2,000	Now	Negotiable
Total	±21,180		

KIDDER.COM

\$4.00/RSF/Year

PROCURING AGENT FEES ON
DEALS UP TO 3 YEARS!



986 MISSION ST

*±3,000-±8,090 SF office spaces
Available for lease in downtown
San Francisco, CA*

Central location only 1 block to Civic Center/Powell
BART/Muni

Local, experienced ownership ready to make
streamlined lease decisions

Various efficient layouts with high, exposed ceilings

Modern indirect lighting throughout

Modernized multi stall restrooms and shower rooms
on every floor

Full HVAC and large operable windows

Open, collaborative kitchen/break areas

Move in ready condition

Central, transit friendly location

Turn-Key creative lease opportunity

Competitive lease rates



HIGH END
OPEN PLAN



ONE BLOCK
FROM BART



986 MISSION ST



AVAILABLE FOR LEASE

KIDDER MATHEWS

986 MISSION ST



AVAILABLE FOR LEASE

KIDDER MATHEWS

986 MISSION ST



AVAILABLE FOR LEASE

KIDDER MATHEWS

986 MISSION ST

A wide-angle photograph of a modern, empty loft space. The room features a high ceiling with exposed concrete beams, white-painted pipes, and several large, industrial-style pendant lights. The floor is made of light-colored wood planks. A long, dark wooden table with metal legs runs along the right side of the room, positioned in front of a large wall of windows. The windows offer a view of a city street with brick buildings and a clear blue sky. A large, silver, insulated duct runs horizontally across the upper part of the room, just below the ceiling. The walls are dark, and a white, slatted partition is visible on the left side of the room.

AVAILABLE FOR LEASE

KIDDER MATHEWS

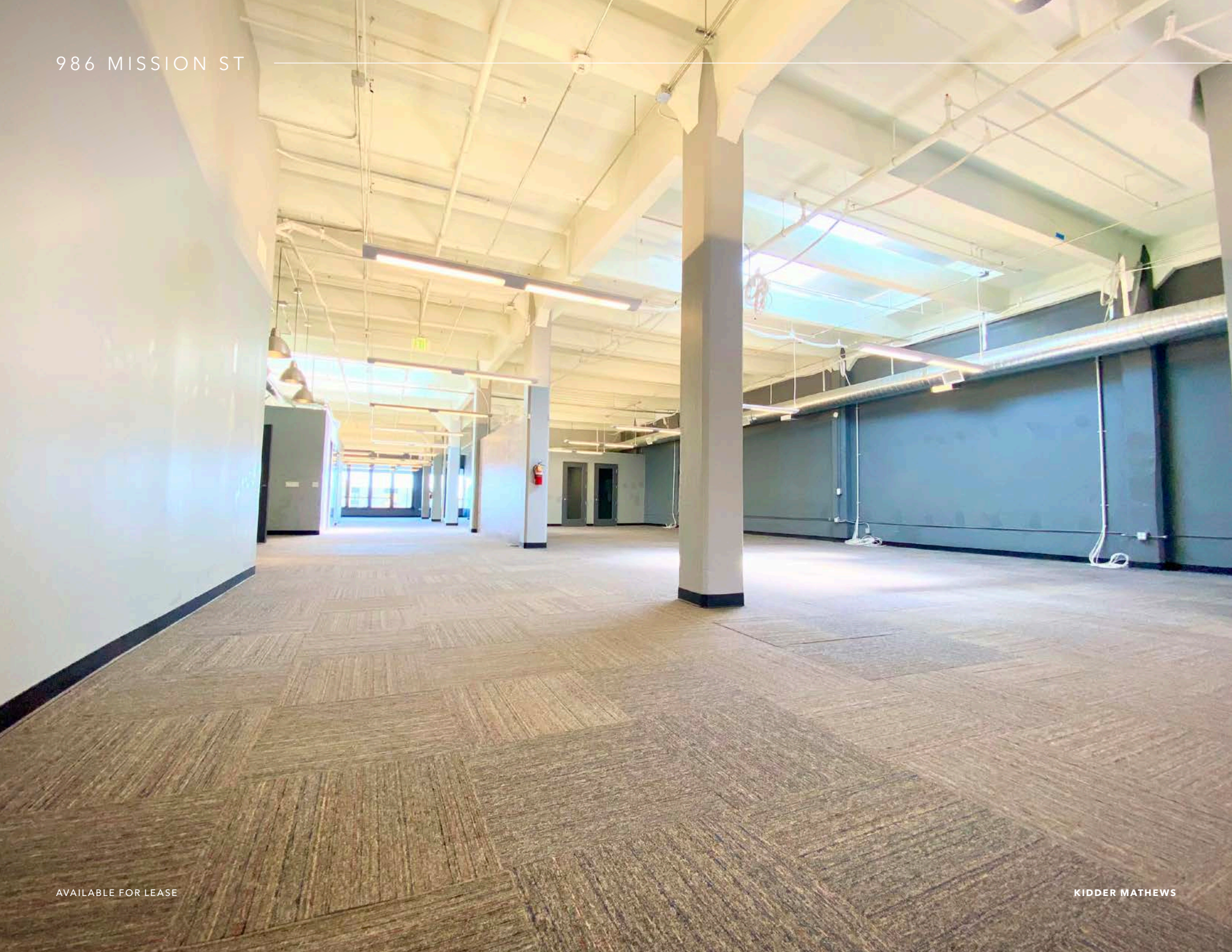
986 MISSION ST



AVAILABLE FOR LEASE

KIDDER MATHEWS

986 MISSION ST



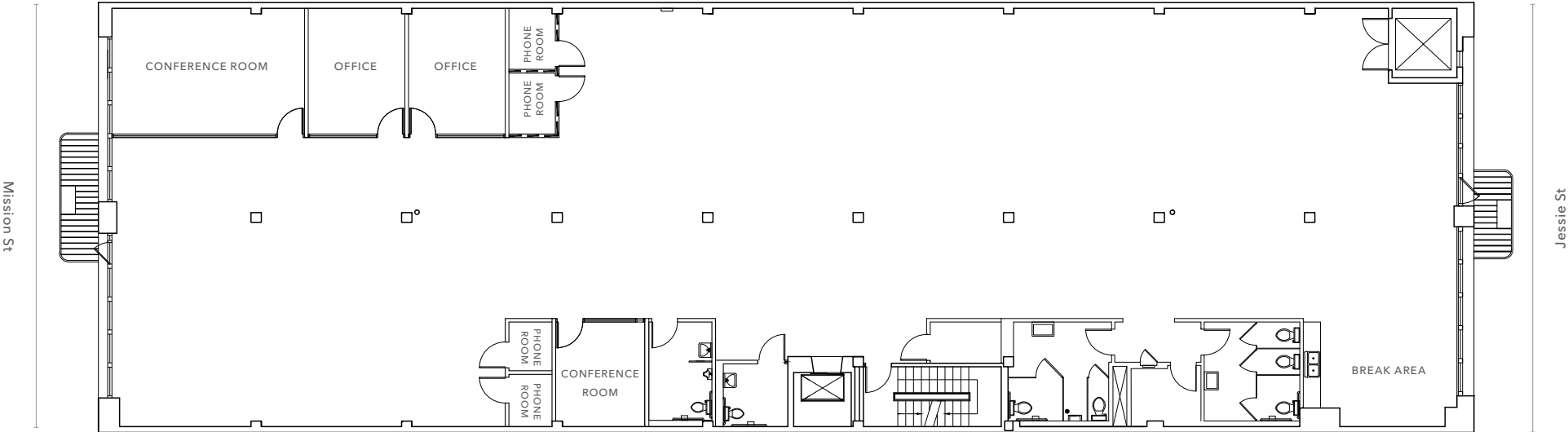
AVAILABLE FOR LEASE

KIDDER MATHEWS



SUITE 500

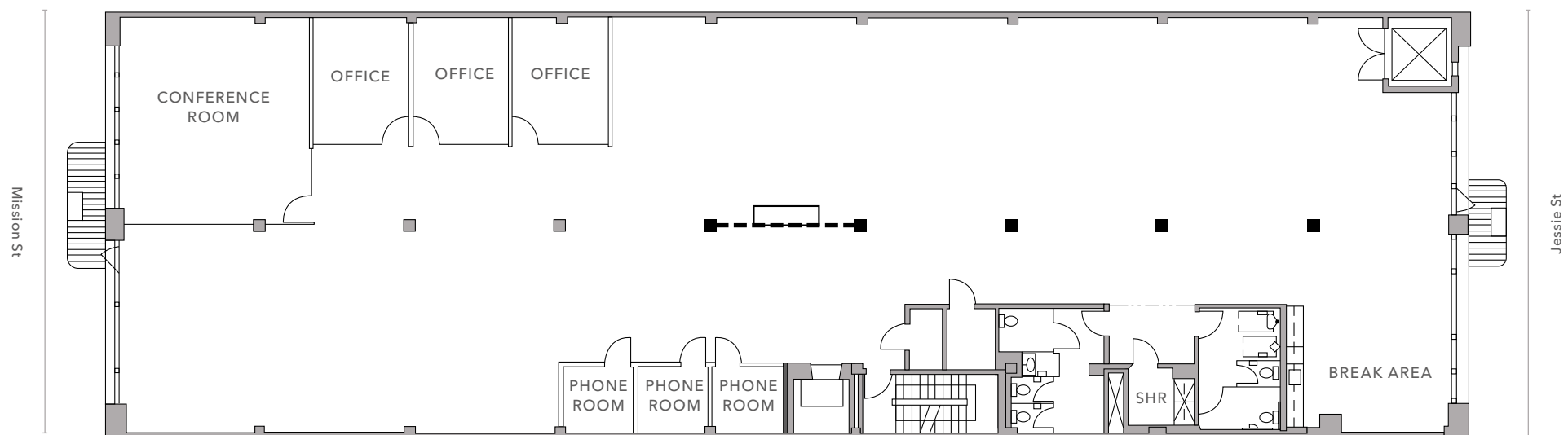
±8.090 SF
AVAILABLE



FLOOR PLAN NOT TO SCALE

SUITE 400

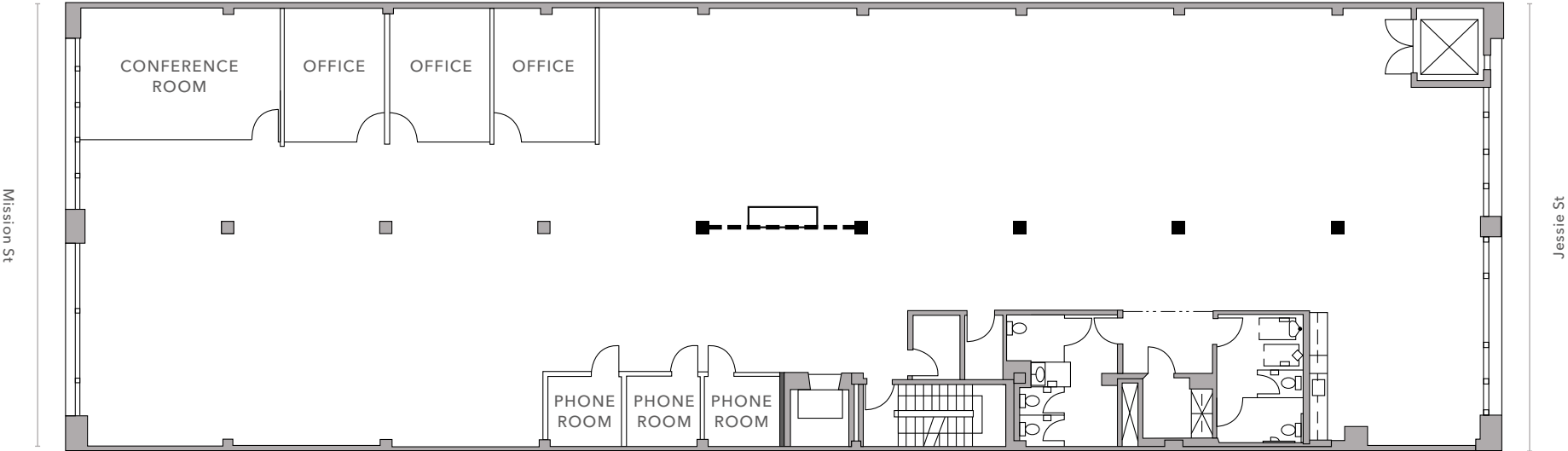
±8.090 SF
AVAILABLE



FLOOR PLAN NOT TO SCALE

SUITE 300

±8.090 SF
AVAILABLE



FLOOR PLAN NOT TO SCALE

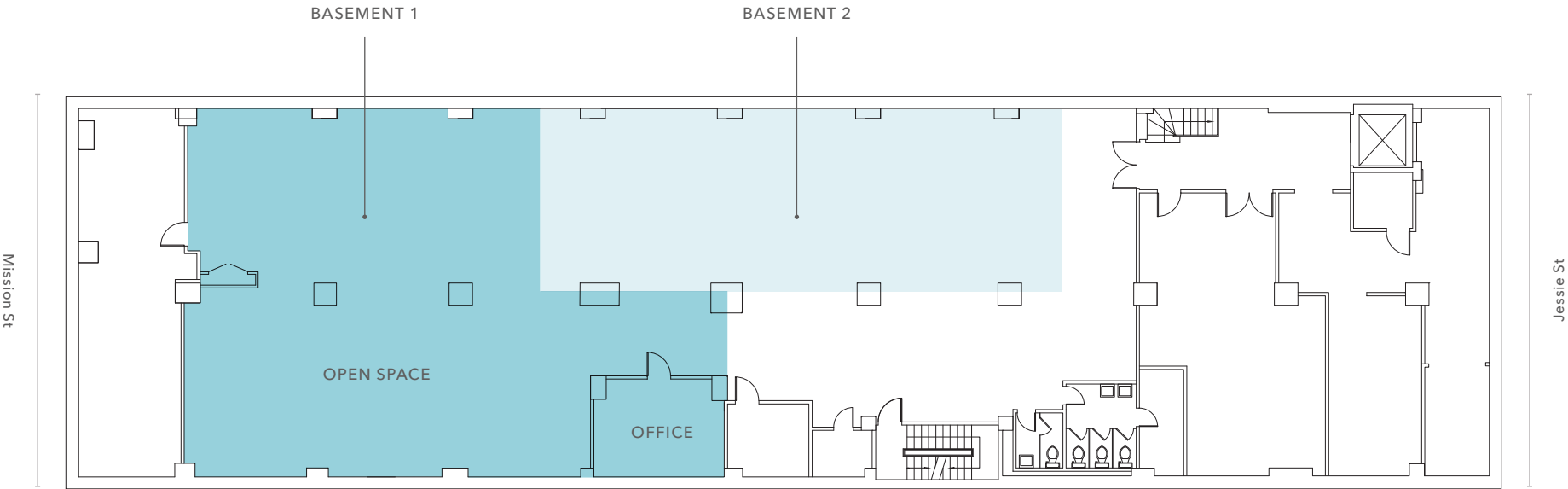
BASEMENT STORAGE/FLEX SPACE

±3,000 SF

BASEMENT 1 AVAILABLE

±2,000 SF

BASEMENT 2 AVAILABLE



FLOOR PLAN NOT TO SCALE



EAT + DRINK

- 01 RT Rotisserie
- 02 Klin
- 03 Rocco's Cafe
- 04 Alamo Square Seafood Grill
- 05 Zesty Cafe
- 06 Osha Thai BBQ San Francisco
- 07 Panda Express
- 08 Oasis Grill
- 09 Delfina Restaurant
- 10 V Cafe
- 11 Subway
- 12 Poké Bar
- 13 KFC
- 14 Whiz Burgers Drive-In
- 15 McDonald's
- 16 T.L. Downtown Krispy Krunchy
- 17 1601 Bar & Kitchen
- 18 BuzzWorks
- 19 Shake Shack
- 20 Dickey's Barbecue Pit
- 21 Popeyes
- 22 Noah's NY Bagels
- 23 Togo's
- 24 Boston Market
- 25 Morton's
- 26 The Cheesecake Factory

HOTELS

- 01 San Francisco Central Hotel
- 02 Edwardian Hotel
- 03 Oak Hotel
- 04 SoMa Park Inn
- 05 BEI San Francisco, Trademark
- 06 San Francisco Inn
- 07 Perramont Hotel
- 08 Embassy Hotel

CAFFEINE

- 01 Blue Bottle Coffee
- 02 Peet's Coffee
- 03 Starbucks
- 04 Pixlcat Coffee
- 05 Four Barrel Coffee
- 06 Cafe Suspiro

PARKING

- 01 1537 Mission St Parking
- 02 1660 Mission Garage - Lot #47
- 03 SOMA Hub Garage (Propark)
- 04 Private Parking
- 05 United SF Parking
- 06 Private Parking
- 07 1401 Folsom St
- 08 Getaround Parking Spaces



*For more information on
this property, please contact*

EVAN HOUSEL
415.229.8922
evan.housel@kidder.com
LIC N° 01882457

KEVIN PON
415.229.8960
kevin.pon@kidder.com
LIC N° 002227662

KIDDER.COM

This information supplied herein is from sources we deem reliable. It is provided without any representation, warranty, or guarantee, expressed or implied as to its accuracy. Prospective Buyer or Tenant should conduct an independent investigation and verification of all matters deemed to be material, including, but not limited to, statements of income and expenses. Consult your attorney, accountant, or other professional advisor.

