



THE UPLAND TECHNOLOGY CENTER

±18,310 SF
HVAC TEMPERATURE
CONTROLLED
WAREHOUSE



2028 W. 11TH STREET | UPLAND, CA

CBRE

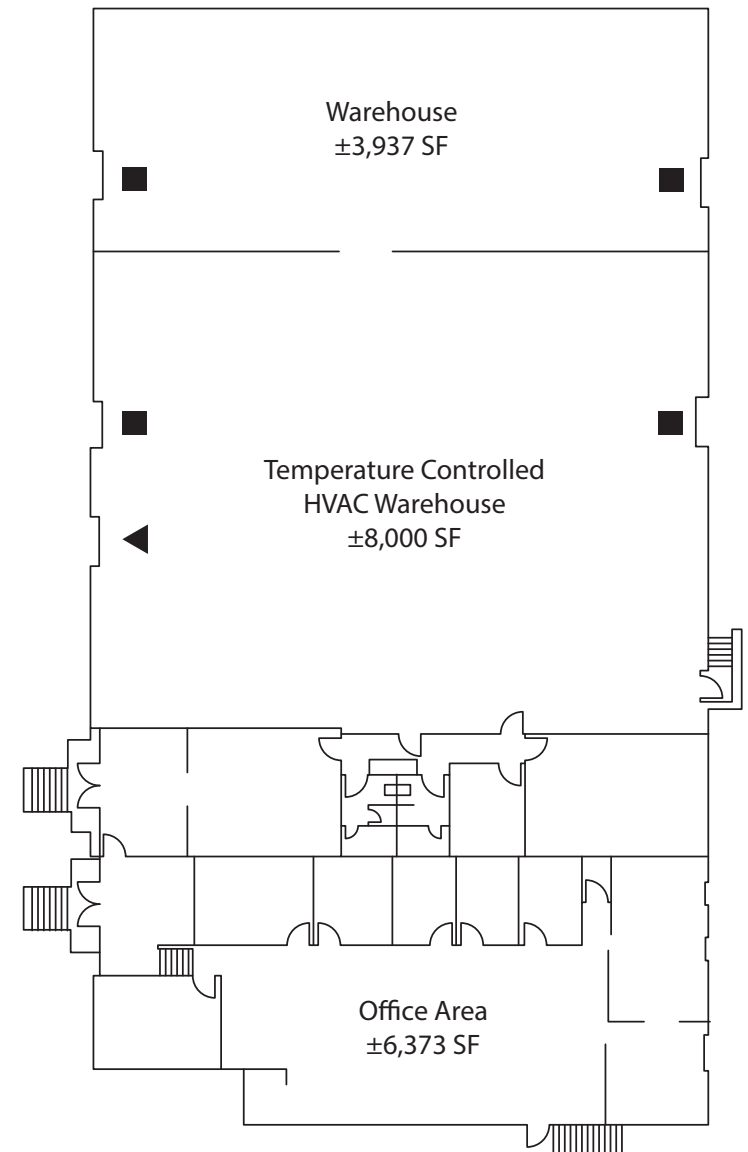
Property Specifications

Address:	2028 W. 11th Street, Upland, CA
Size:	18,310 Total Square Feet
Office:	6,373 Square Feet. Offices have been fully updated.
WH Clear Ht:	18' Min Clear
Loading:	4 GL 1 DH
Construction Type:	Concrete Tilt-Up
HVAC:	8,000 SF of Temperature controlled warehouse throughout
Zoning:	Light Industrial Ownership will consider a myriad of industrial, manufacturing, warehousing, R&D, and sports-related uses.
Improvement Allowance:	Ownership is well capitalized and will consider Improvement Allowance subject to qualified tenant interest.



Floor Plan

- ▲ Dock Doors
- Drive-In Doors





THE UPLAND TECHNOLOGY CENTER



FOR MORE INFORMATION, PLEASE CONTACT:

RICHARD LEE, SIOR
Senior Vice President
Lic. 01757870
+1909 418 2010
richard.lee@cbre.com

JUSTIN KUEHN
First Vice President
Lic. 01966182
+1909 418 2013
justin.kuehn@cbre.com

NICHOLAS CHANG, CCIM, SIOR
Senior Vice President
Lic. 01344844
+1909 418 2014
nicholas.chang@cbre.com

SIONE FUA
Vice President
Lic. 02006432
+1909 418 2007
sione.fua@cbre.com

CBRE

© 2025 CBRE, Inc. All rights reserved. This information has been obtained from sources believed reliable, but has not been verified for accuracy or completeness. Any projections, opinions, or estimates are subject to uncertainty. The information may not represent the current or future performance of the property. You and your advisors should conduct a careful, independent investigation of the property and verify all information. Any reliance on this information is solely at your own risk. CBRE and the CBRE logo are service marks of CBRE, Inc. and/or its affiliated or related companies in the United States and other countries. All other marks displayed on this document are the property of their respective owners.