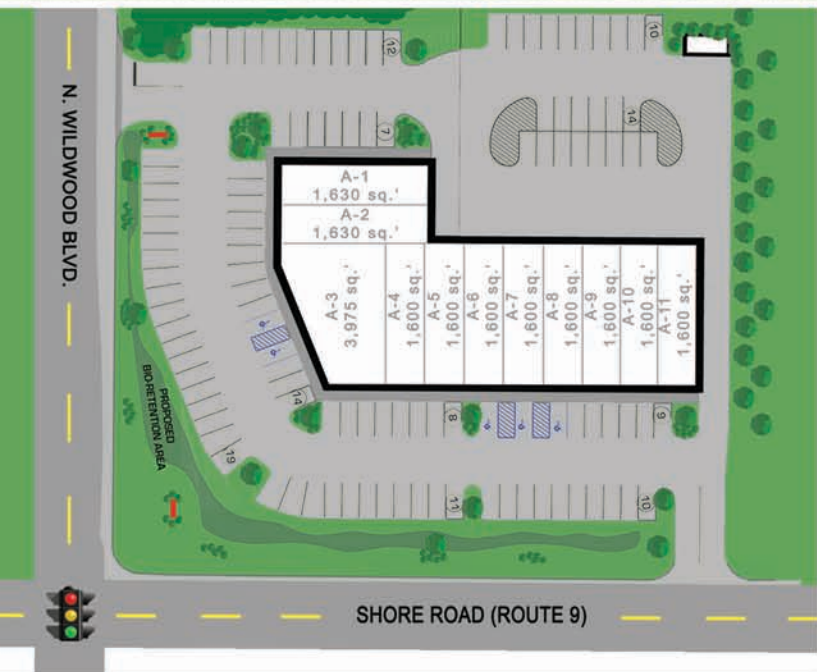




# Grapevine PLAZA

**7 N. Wildwood Blvd., Cape May Court House, NJ 08210**

Prime Cape May County location at a signalized intersection on busy Route 9 & Wildwood Blvd. This center has great visibility and traffic counts. Just off Garden State Parkway Exit 6, this center has easy access from all of Cape May County. For the business owner looking to serve Cape May Court House as well as the entire County, this is the location for you.



**VisionPropertyGroupLLC.com**

Leasing Info: John DiDonato 609-561-7222 (cell) 609-457-7169