

SOUTHEAST OKC FLEX WAREHOUSE

1921 SE 29th Street, Oklahoma City, OK 73129

INDUSTRIAL PROPERTY FOR LEASE



PROPERTY DESCRIPTION

1921 SE 29th, Suite A is 3,750sf. The suite has an office and restroom. Tenants are responsible for utilities and trash.

LOCATION DESCRIPTION

Located less than a mile east from I-35 and 2 miles south of I-40, this industrial area is easy to access and centrally located enough to conveniently serve all of Oklahoma City.

PROPERTY HIGHLIGHTS

- Convenient location
- 12'x14' overhead doors
- Fully insulated and heated building

OFFERING SUMMARY

LEASE RATE:	\$10.00 SF/yr (MG)
AVAILABLE SF:	3,750 SF
BUILDING SIZE:	7,500 SF

Ian Duty-Dean

Managing Broker

405.928.6210

ian@greyhound.group

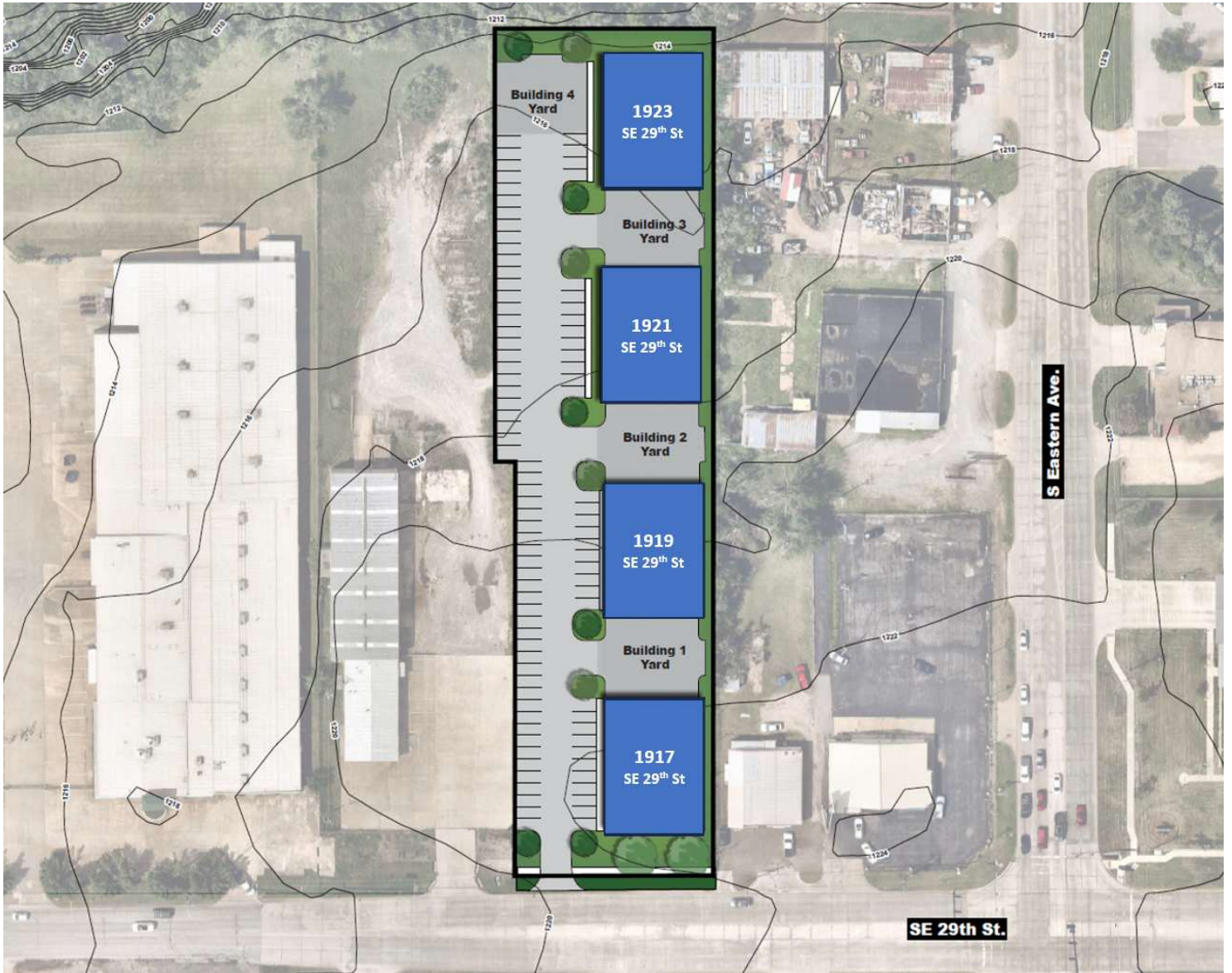


This information has been obtained from sources believed reliable. The Greyhound Group has not verified it and makes no guarantee, warranty or representation about it. Any projections, opinions, assumptions, or estimates used are for example only and do not represent the current or future performance of the property. You and your advisors should conduct a careful, independent investigation of the property to determine to your satisfaction the suitability of the property for your needs.

SOUTHEAST OKC FLEX WAREHOUSE

1921 SE 29th Street, Oklahoma City, OK 73129

INDUSTRIAL PROPERTY FOR LEASE



AVAILABLE SPACES

SUITE	TENANT	SIZE (SF)	LEASE TYPE	LEASE RATE
1921 SE 29th Street, Ste A	Available	3,750 SF	Modified Gross	\$10.00 SF/yr

Ian Duty-Dean
 Managing Broker
 405.928.6210
 ian@greyhound.group



This information has been obtained from sources believed reliable. The Greyhound Group has not verified it and makes no guarantee, warranty or representation about it. Any projections, opinions, assumptions, or estimates used are for example only and do not represent the current or future performance of the property. You and your advisors should conduct a careful, independent investigation of the property to determine to your satisfaction the suitability of the property for your needs.

SOUTHEAST OKC FLEX WAREHOUSE

1921 SE 29th Street, Oklahoma City, OK 73129

INDUSTRIAL PROPERTY FOR LEASE



Ian Duty-Dean
Managing Broker
405.928.6210
ian@greyhound.group

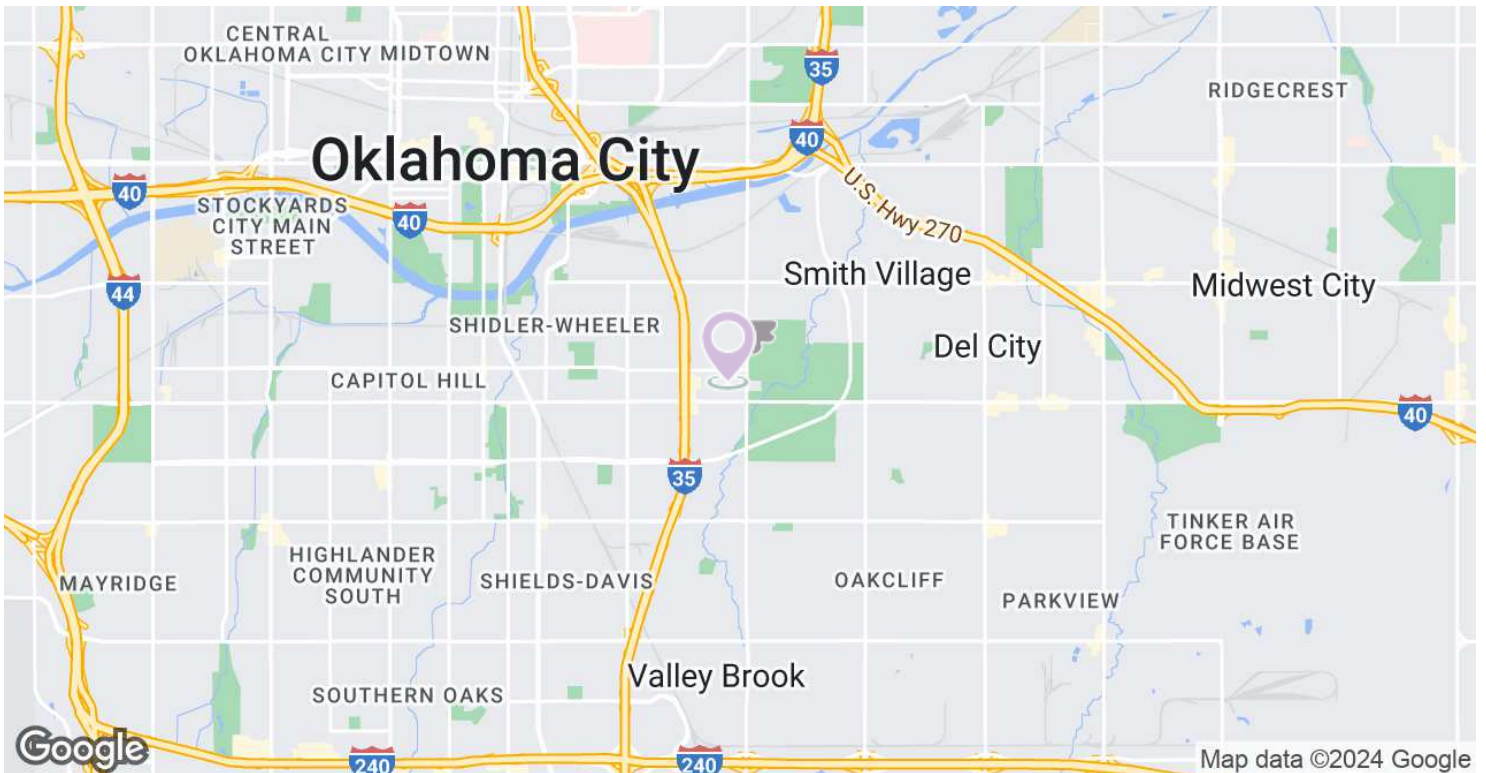


This information has been obtained from sources believed reliable. The Greyhound Group has not verified it and makes no guarantee, warranty or representation about it. Any projections, opinions, assumptions, or estimates used are for example only and do not represent the current or future performance of the property. You and your advisors should conduct a careful, independent investigation of the property to determine to your satisfaction the suitability of the property for your needs.

SOUTHEAST OKC FLEX WAREHOUSE

1921 SE 29th Street, Oklahoma City, OK 73129

INDUSTRIAL PROPERTY FOR LEASE



Ian Duty-Dean
Managing Broker
405.928.6210
ian@greyhound.group

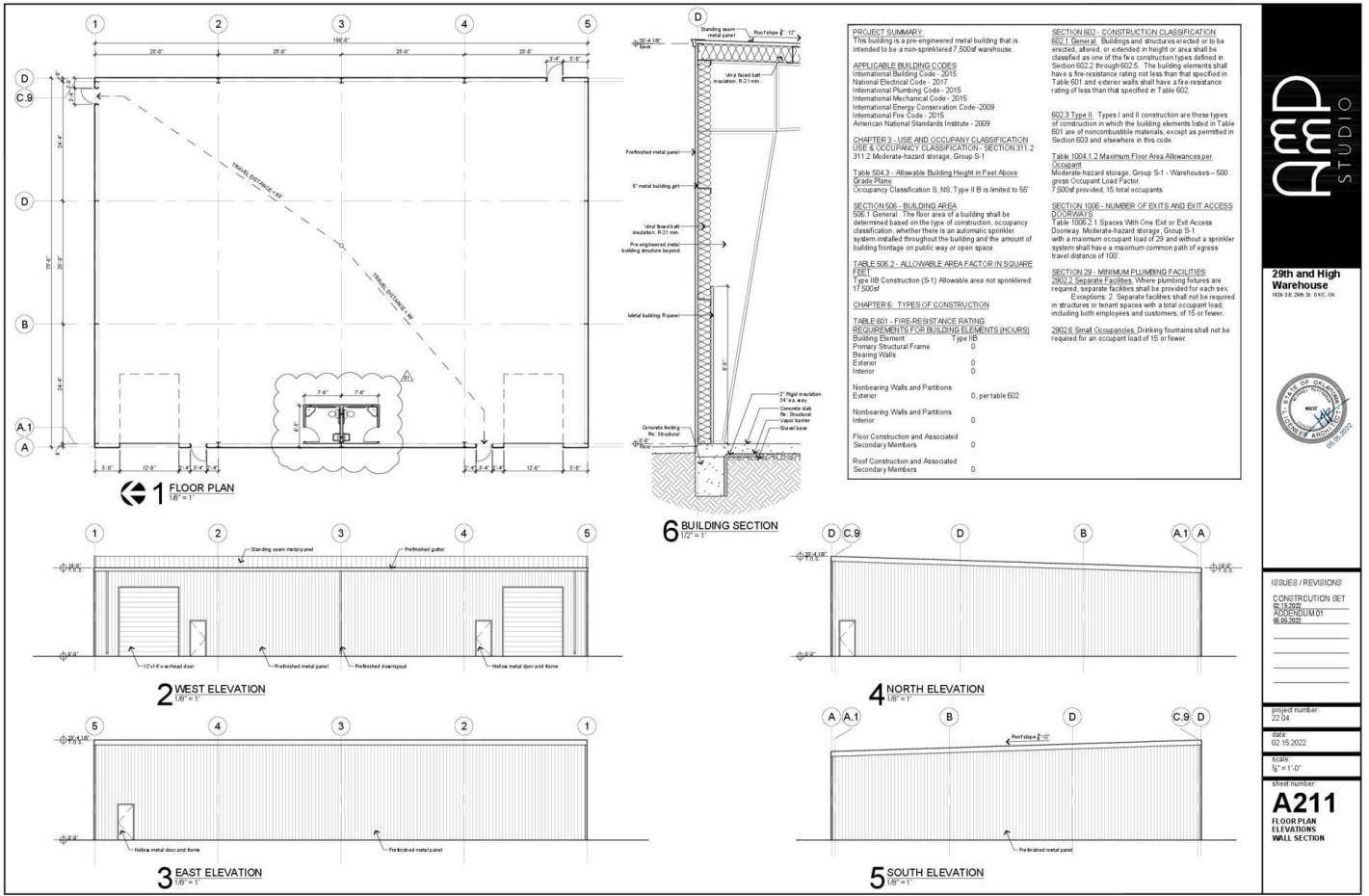


This information has been obtained from sources believed reliable. The Greyhound Group has not verified it and makes no guarantee, warranty or representation about it. Any projections, opinions, assumptions, or estimates used are for example only and do not represent the current or future performance of the property. You and your advisors should conduct a careful, independent investigation of the property to determine to your satisfaction the suitability of the property for your needs.

SOUTHEAST OKC FLEX WAREHOUSE

1921 SE 29th Street, Oklahoma City, OK 73129

INDUSTRIAL PROPERTY FOR LEASE



A&P STUDIO

29th and High Warehouse
1921 SE 29th St, OKC, OK



ISSUES / REVISIONS

NO.	DESCRIPTION
1	CONSTRUCTION SET
2	06.15.2022
3	06.09.2022

Project number: 22-04
Date: 02.15.2022
Scale: 1/8" = 1'-0"

Sheet number: **A211**
FLOOR PLAN ELEVATIONS WALL SECTION

Ian Duty-Dean
Managing Broker
405.928.6210
ian@greyhound.group



This information has been obtained from sources believed reliable. The Greyhound Group has not verified it and makes no guarantee, warranty or representation about it. Any projections, opinions, assumptions, or estimates used are for example only and do not represent the current or future performance of the property. You and your advisors should conduct a careful, independent investigation of the property to determine to your satisfaction the suitability of the property for your needs.

SOUTHEAST OKC FLEX WAREHOUSE

1921 SE 29th Street, Oklahoma City, OK 73129

INDUSTRIAL PROPERTY FOR LEASE



IAN DUTY-DEAN

Managing Broker

ian@greyhound.group

Direct: **405.928.6210** | Cell: **405.642.4677**

PROFESSIONAL BACKGROUND

Ian Duty-Dean earned his degree at the University of Oklahoma in multi-disciplinary studies focused on Construction Science and Finance. Ian began his career in commercial real estate during an internship at the Oklahoma City Urban Renewal (OCURA), a public-private partnership charged with the revitalization of Oklahoma City's urban neighborhoods. The experience and exposure to the industry lead him to becoming a broker at Land Run Commercial. At Land Run, his primary focus was retail leasing in the Oklahoma City metro and tertiary markets. While at Land Run Ian worked on redevelopment projects that helped spur the larger revitalization OKC's Uptown District. Ian joined ADEPT Commercial Real Estate in 2018 as a Senior Advisor, later becoming Director of brokerage sales and leasing. While at ADEPT Ian brokered deals in retail, office, industrial, multi-family and land. In 2023 he founded The Greyhound Group, a full-service commercial real estate firm offering brokerage, development and property management services. Ian brings a wealth of knowledge; by focusing on the mutual success of tenants and landlords, he positions assets to maximize their value, retains and attracts high quality tenants.

EDUCATION

University of Oklahoma - Multidisciplinary Studies

MEMBERSHIPS

Urban Land Institute
Commercial Real Estate Council of Oklahoma City
International Council on Shopping Centers
YMCA of Greater OKC - Downtown District Advisory Council
Automobile Alley Board of Directors

Ian Duty-Dean

Managing Broker

405.928.6210

ian@greyhound.group



This information has been obtained from sources believed reliable. The Greyhound Group has not verified it and makes no guarantee, warranty or representation about it. Any projections, opinions, assumptions, or estimates used are for example only and do not represent the current or future performance of the property. You and your advisors should conduct a careful, independent investigation of the property to determine to your satisfaction the suitability of the property for your needs.