



ARES  
INDUSTRIAL  
MANAGEMENT

# 100 W WALNUT AVENUE

PERRIS, CALIFORNIA 92571

FOR LEASE | 205,589 SQ FT | Class A Warehouse Facility



**AVISON  
YOUNG**

**CODY LERNER, SIOR**

Principal  
CA License No. 01994966  
951.267.2752  
[cody.lerner@avisonyoung.com](mailto:cody.lerner@avisonyoung.com)

**KAMERON GRAYLEE**

Associate  
CA License No. 02151132  
213.471.1052  
[kameron.graylee@avisonyoung.com](mailto:kameron.graylee@avisonyoung.com)

DEVELOPED BY

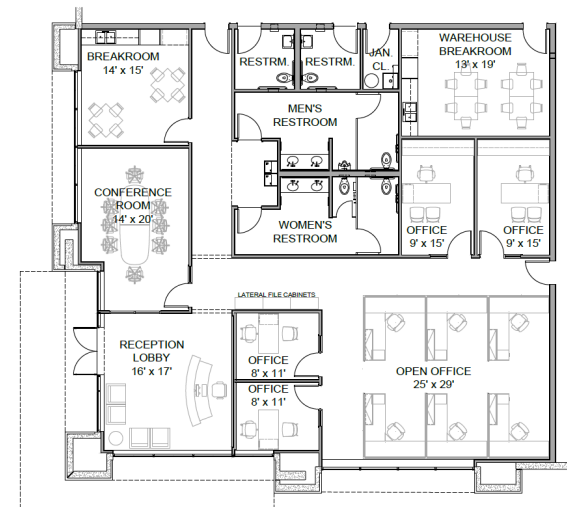
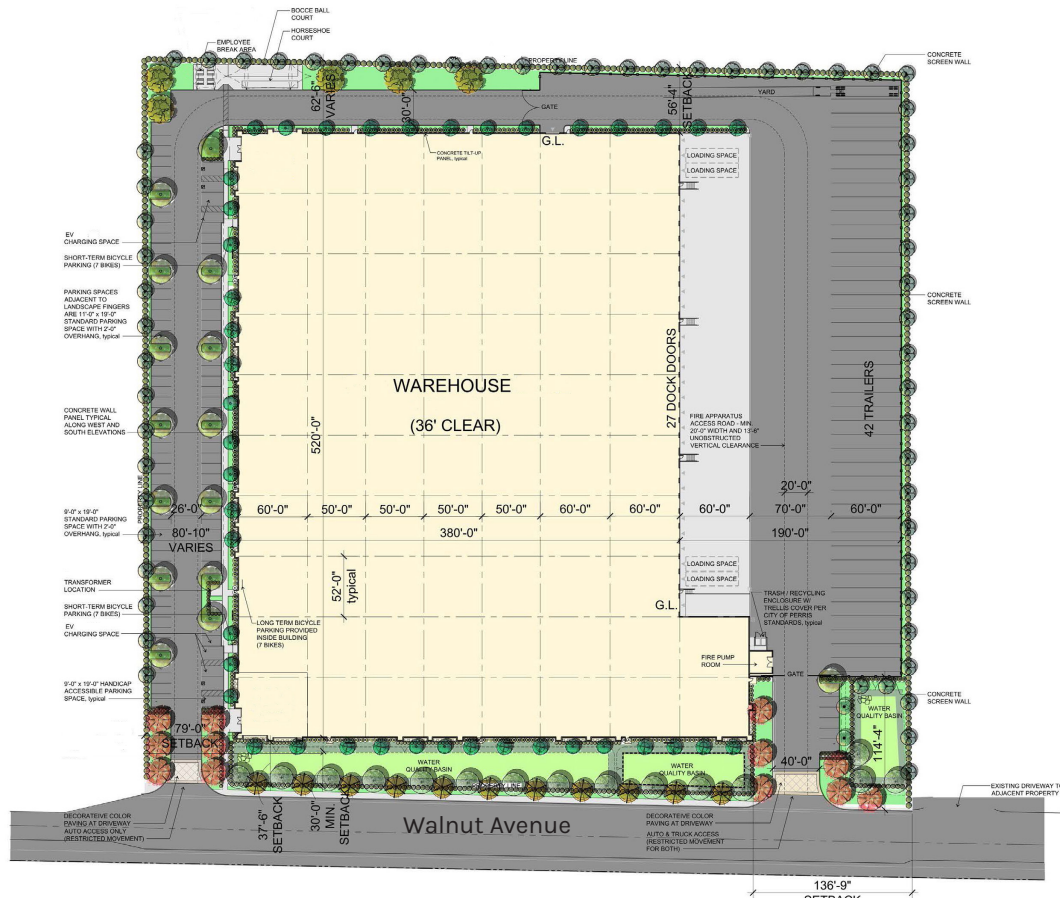


ARES  
INDUSTRIAL  
MANAGEMENT

# Property FEATURES

- 205,589 Square Feet
- 9.56 Acres of Land
- 3,910 Square Feet of Office Space
- 36' Clear Height
- 27 DH Doors

- 2 (12'x14') GL Doors
- 2000 amps Power
- 90 Parking Stalls
- 42 Trailer Stalls
- 190' Truck Court



3,910 SF Office Space



**ARES**  
INDUSTRIAL  
MANAGEMENT



# Location HIGHLIGHTS

- Ideal location in the Inland Empire with easy access to I-215 Freeway
- Nearby distribution centers include Amazon, Wayfair, The Home Depot, Hanes + many more
- Near the newly completed 1-215 Placentia Avenue Interchange, a new 16-mile transportation corridor between the San Jacinto and Perris valleys.



ARES  
INDUSTRIAL  
MANAGEMENT



## ABOUT ARES MANAGEMENT CORPORATION

Ares Management Corporation (NYSE: ARES) is a leading global alternative investment manager offering clients complementary primary and secondary investment solutions across the credit, private equity, real estate and infrastructure asset classes. We seek to provide flexible capital to support businesses and create value for our stakeholders and within our communities. By collaborating across our investment groups, we aim to generate consistent and attractive investment returns throughout market cycles. For more information, please visit [www.aresmgmt.com](http://www.aresmgmt.com).



### CODY LERNER, SIOR

Principal  
CA License No. 01994966  
951.267.2752  
[cody.lerner@avisonyoung.com](mailto:cody.lerner@avisonyoung.com)

### KAMERON GRAYLEE

Associate  
CA License No. 02151132  
213.471.1052  
[kameron.graylee@avisonyoung.com](mailto:kameron.graylee@avisonyoung.com)



**ARES  
INDUSTRIAL  
MANAGEMENT**