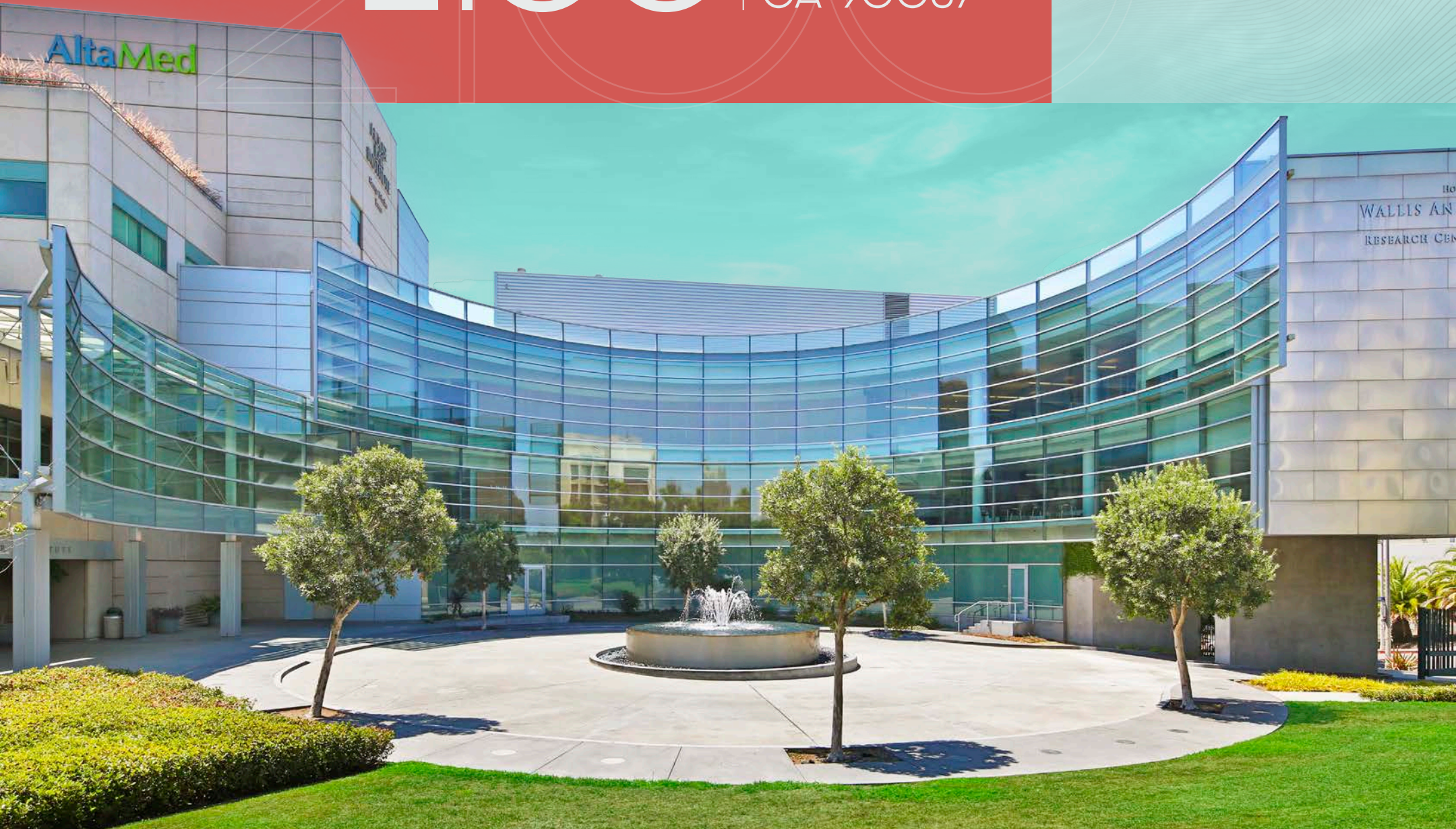


2100

W. 3RD ST.
LOS ANGELES
CA 90057

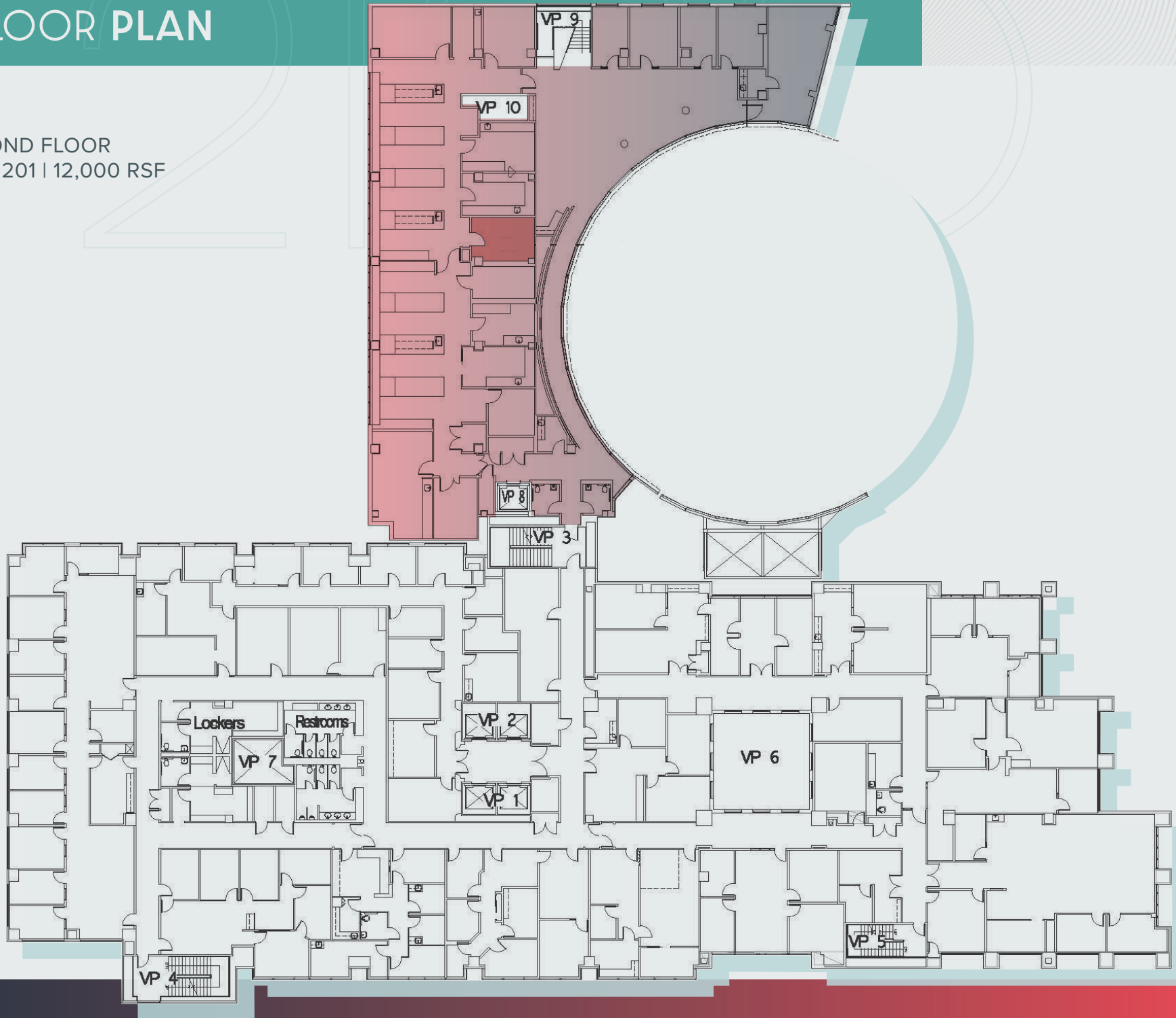
CBRE



MEDICAL OFFICE SPACE FOR LEASE WITH ABUNDANT ON-SITE PARKING

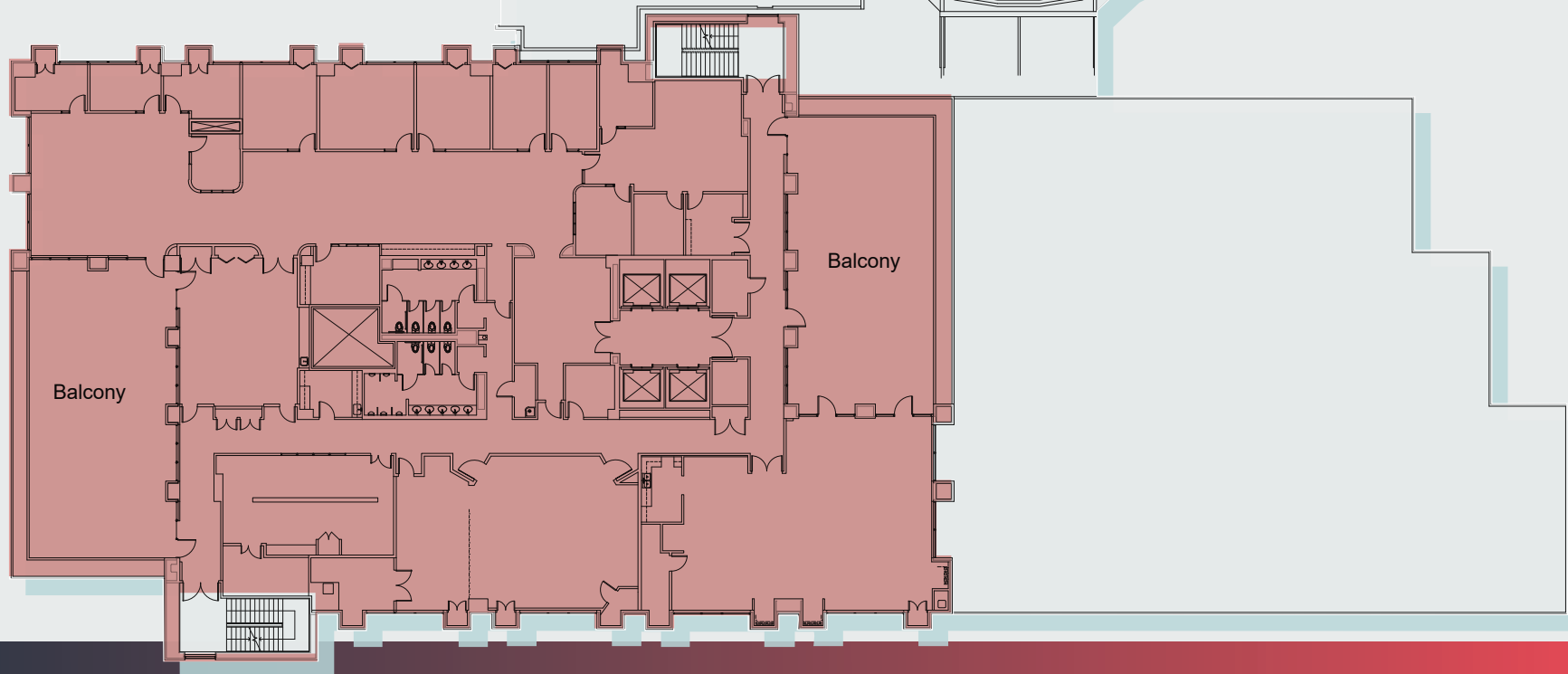
FLOOR PLAN

SECOND FLOOR
Suite 201 | 12,000 RSF



FLOOR PLAN

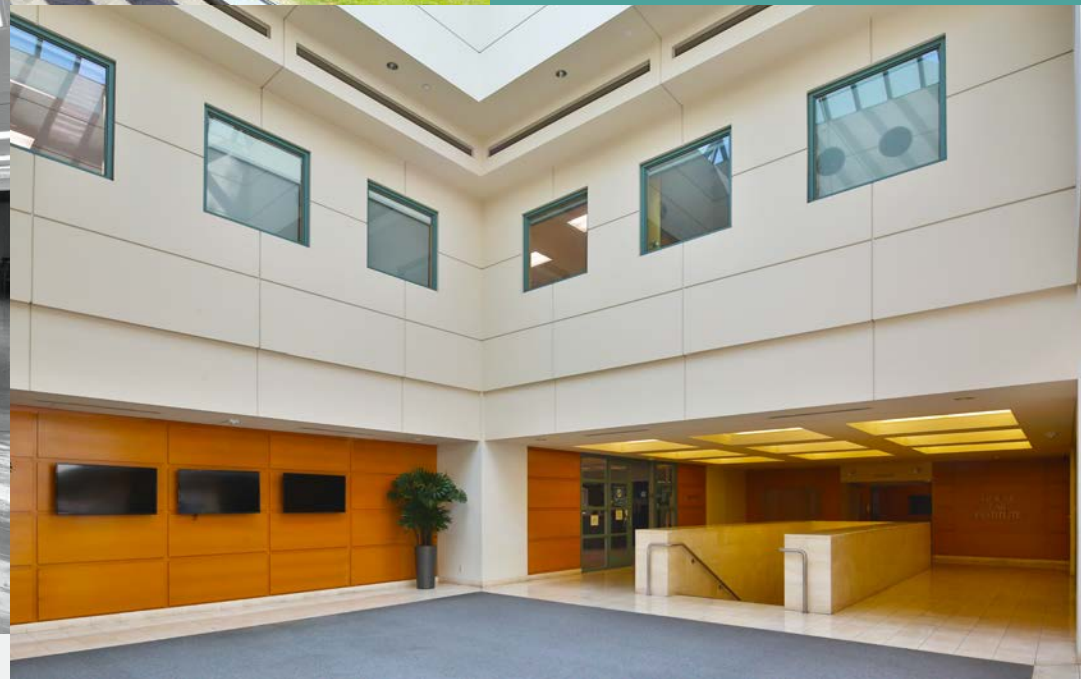
FIFTH FLOOR
Suite 500 | 14,500 RSF



A LOOK INSIDE



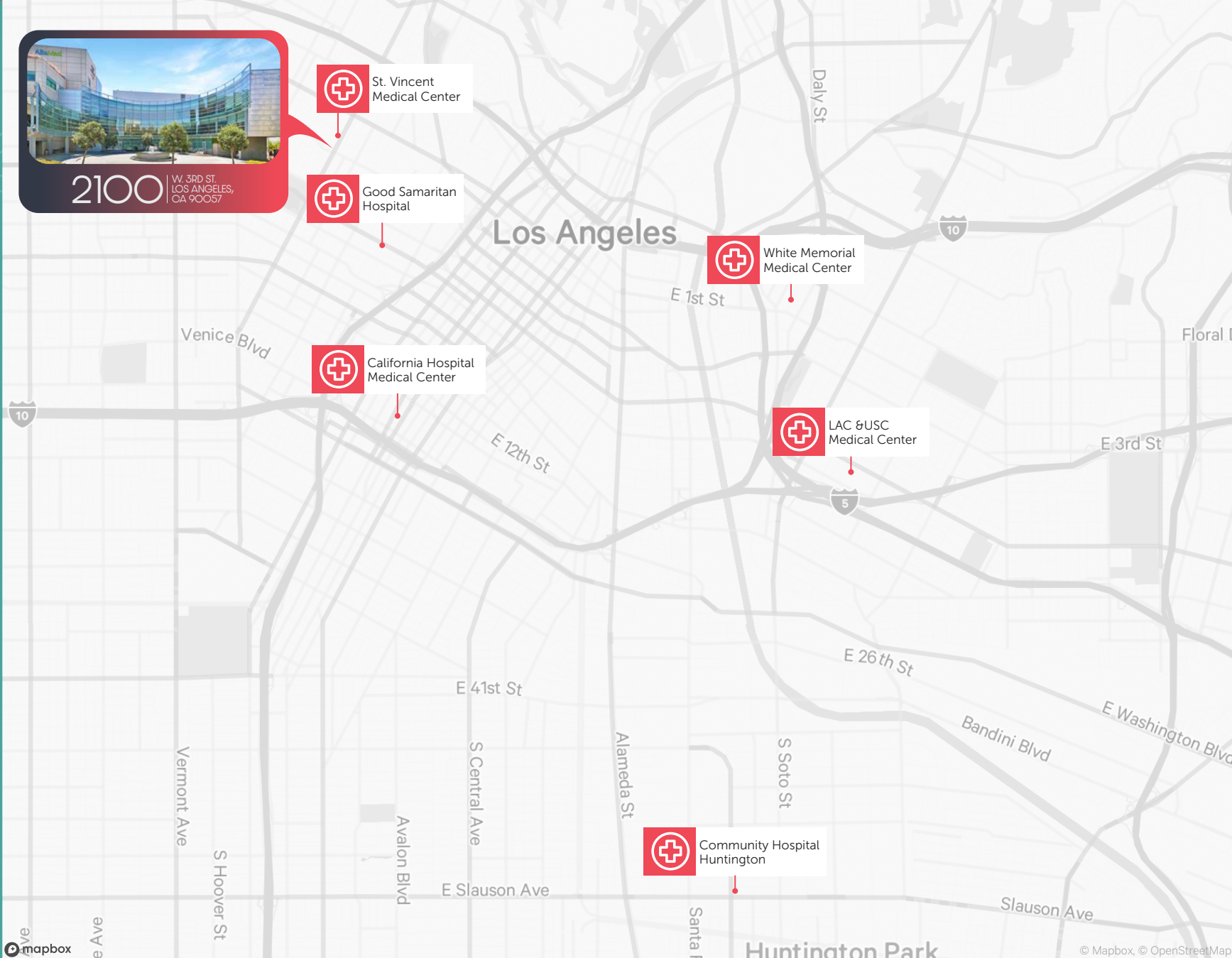
**SPACIOUS,
MODERN AND
WELL-EQUIPPED
SUITES
CONVENIENTLY
LOCATED NEAR
SOME OF THE
MOST REPUTABLE
HOSPITALS
IN THE CITY.**



MEDICAL OFFICE SPACE FOR LEASE | 2100 W. 3RD ST. LOS ANGELES, CA 90057

AERIAL MAP

2100 W. 3RD ST. is located in a vibrant neighborhood situated in the Westlake district of Los Angeles, which is a historic hub of the city. There are plenty of restaurants, shops, entertainment venues and landmarks in the area which is easily accessible as it is near the Westlake/ MacArthur Park Metro Station.



MEDICAL OFFICE SPACE FOR LEASE | 2100 W. 3RD ST. LOS ANGELES, CA 90057

CONTACT

CBRE



ANGIE WEBER

Lic. 01015031

+1 818 502 6750

angie.weber@cbre.com

DANA NIALIS

Lic. 01947265

+1 818 502 6774

dana.nialis@cbre.com

2100 | W. 3RD ST.
LOS ANGELES,
CA 90057

© 2024 CBRE, Inc. All rights reserved. This information has been obtained from sources believed reliable but has not been verified for accuracy or completeness. You should conduct a careful, independent investigation of the property and verify all information. Any reliance on this information is solely at your own risk. CBRE and the CBRE logo are service marks of CBRE, Inc. All other marks displayed on this document are the property of their respective owners, and the use of such logos does not imply any affiliation with or endorsement of CBRE. Photos herein are the property of their respective owners. Use of these images without the express written consent of the owner is prohibited.