

1710

**RHODE
ISLAND**

2,983 SF
FLOOR PLATES

OFFERS A UNIQUE
OPPORTUNITY
FOR SMALL FIRMS
TO HAVE FULL
CONTROL OF
FLOOR



**CUSHMAN &
WAKEFIELD**



24/7 HVAC CAPABILITIES

TENANT CONTROLLED HVAC 24/7 — One Of DC's Only Buildings With No Overtime Hvac Cost



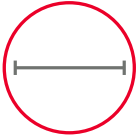
NEW

LOUNGE & CONFERENCE CENTER



NEWLY RENOVATED

LOBBY



FULL FLOOR SPEC SUITES

AVAILABLE



LOCATION

CENTRAL BUSINESS DISTRICT



IDEAL FLOORPLATES

FOR SINGLE TENANT TO HAVE FULL CONTROL OF FLOOR

AVAILABILITIES

| | | | |
|------------------------|-----------|--------------------------------|--------|
| LEVEL 4 | 2,983 RSF | \$46.00 FULL SERVICE | OFFICE |
| LEVEL 5 (SPEC) | 2,983 RSF | \$46.00 FULL SERVICE | OFFICE |
| LEVEL 6 (SHELL) | 2,983 RSF | \$46.00 FULL SERVICE | OFFICE |
| LEVEL 8 | 2,983 RSF | \$46.00 FULL SERVICE | OFFICE |
| LEVEL 10 | 2,983 RSF | \$46.00 FULL SERVICE | OFFICE |
| LEVEL 11 | 2,983 RSF | \$46.00 FULL SERVICE | OFFICE |
| LEVEL 12/13 | 5,966 RSF | \$46.00 FULL SERVICE | OFFICE |

1710

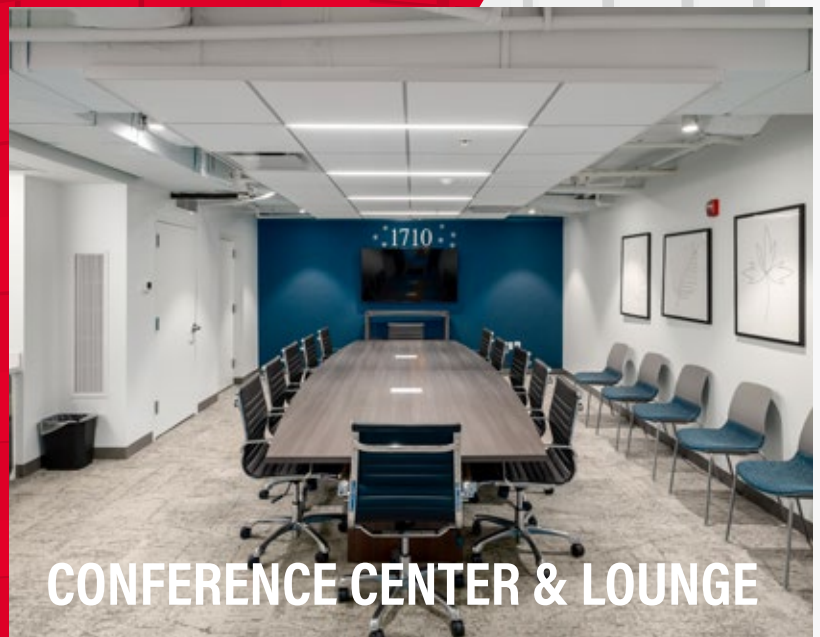
**RHODE
ISLAND**



VIEW



LOBBY

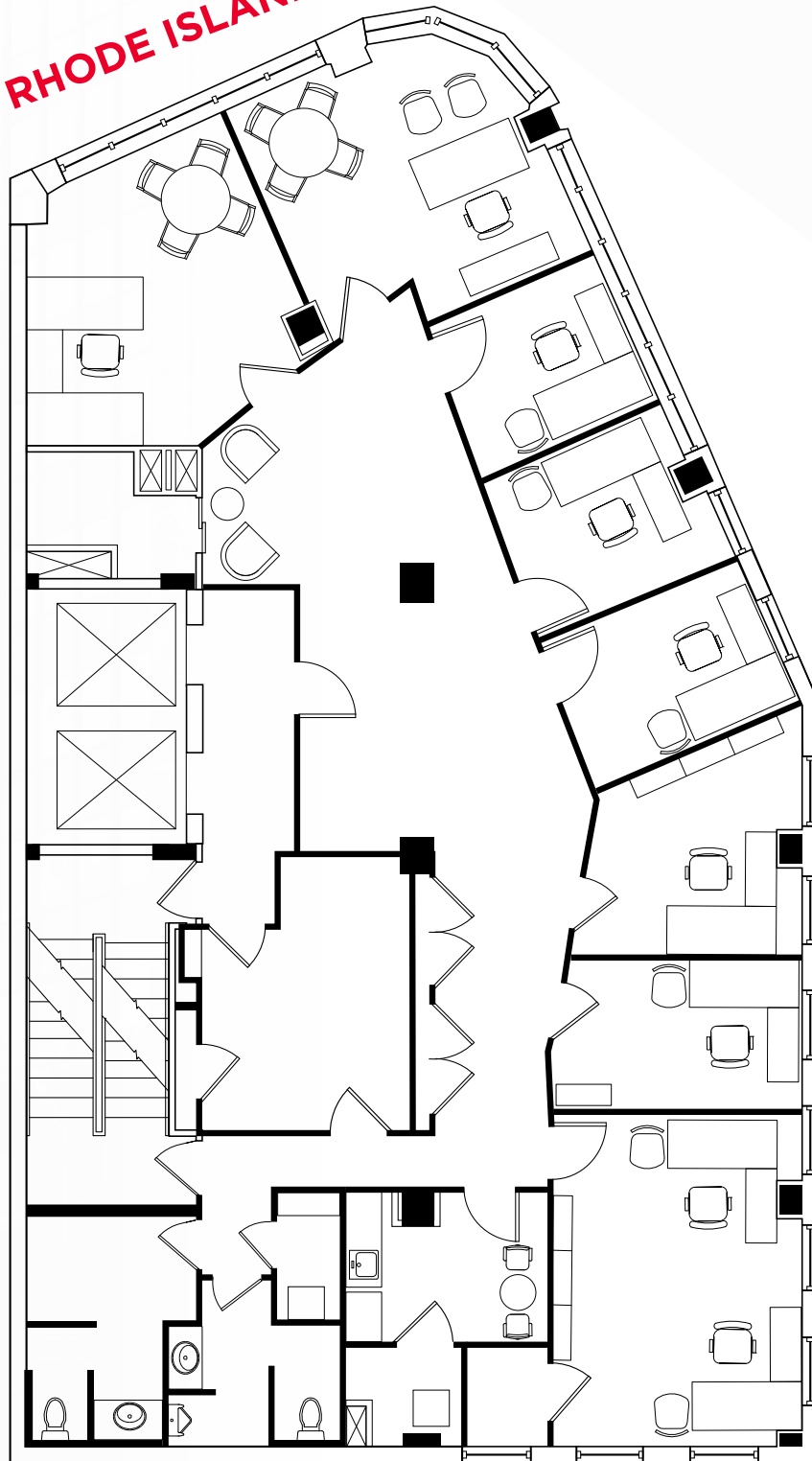


CONFERENCE CENTER & LOUNGE

4TH FLOOR

2,983 SF

RHODE ISLAND AVE

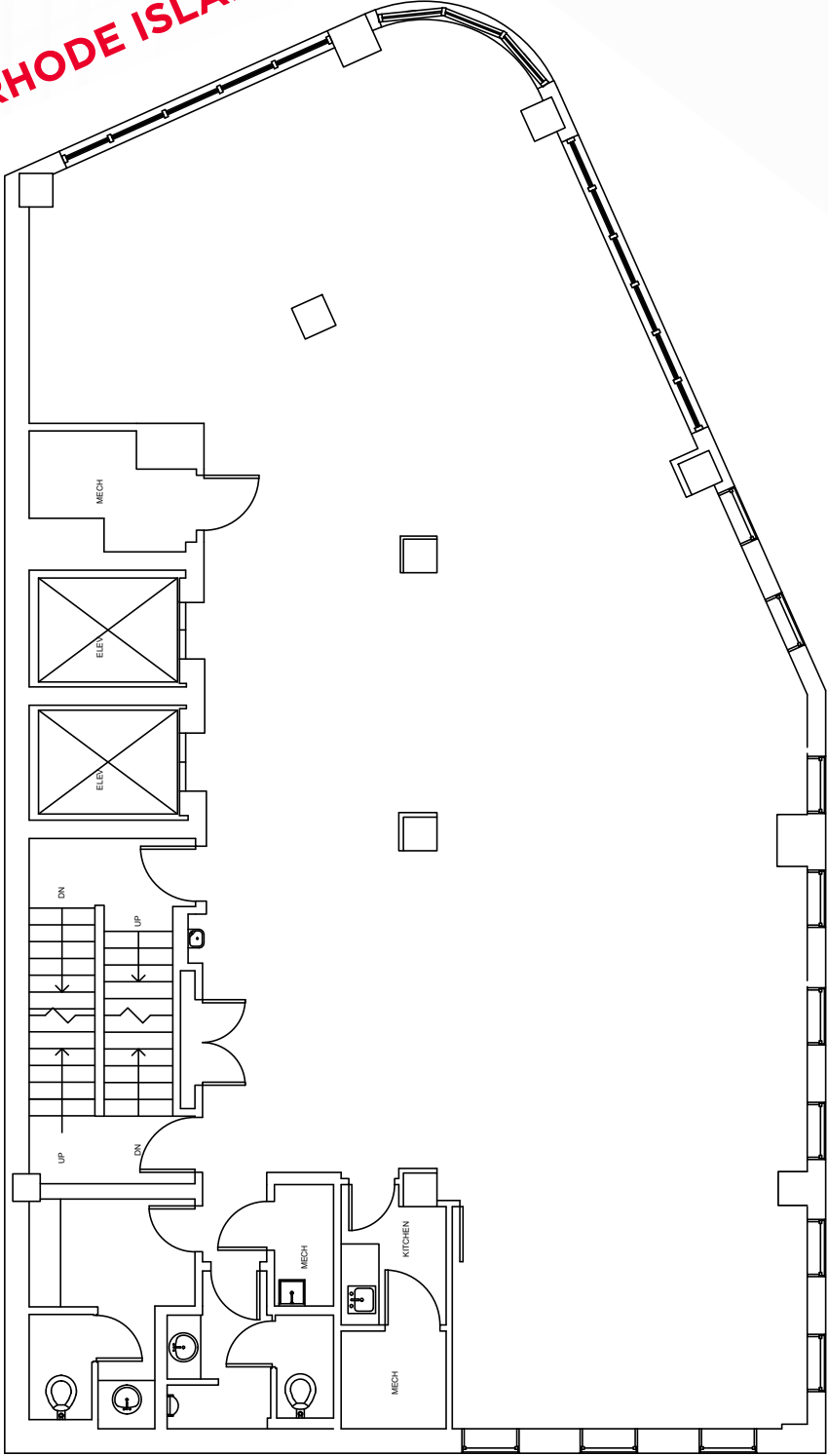


\$46.00
FULL SERVICE

6TH FLOOR (SHELL)

2,983 SF

RHODE ISLAND AVE

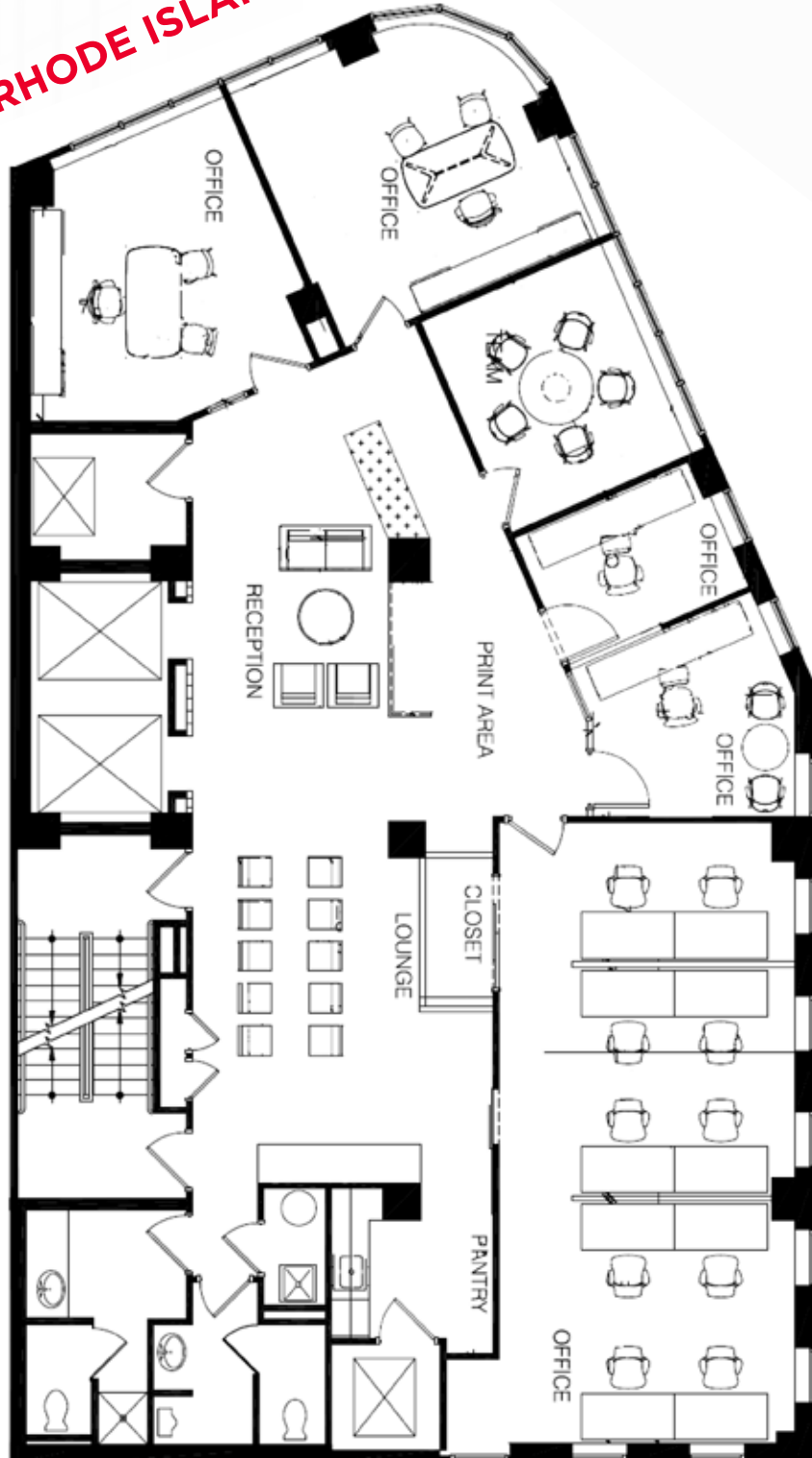


\$46.00
FULL SERVICE

8TH FLOOR

2,983 SF

RHODE ISLAND AVE

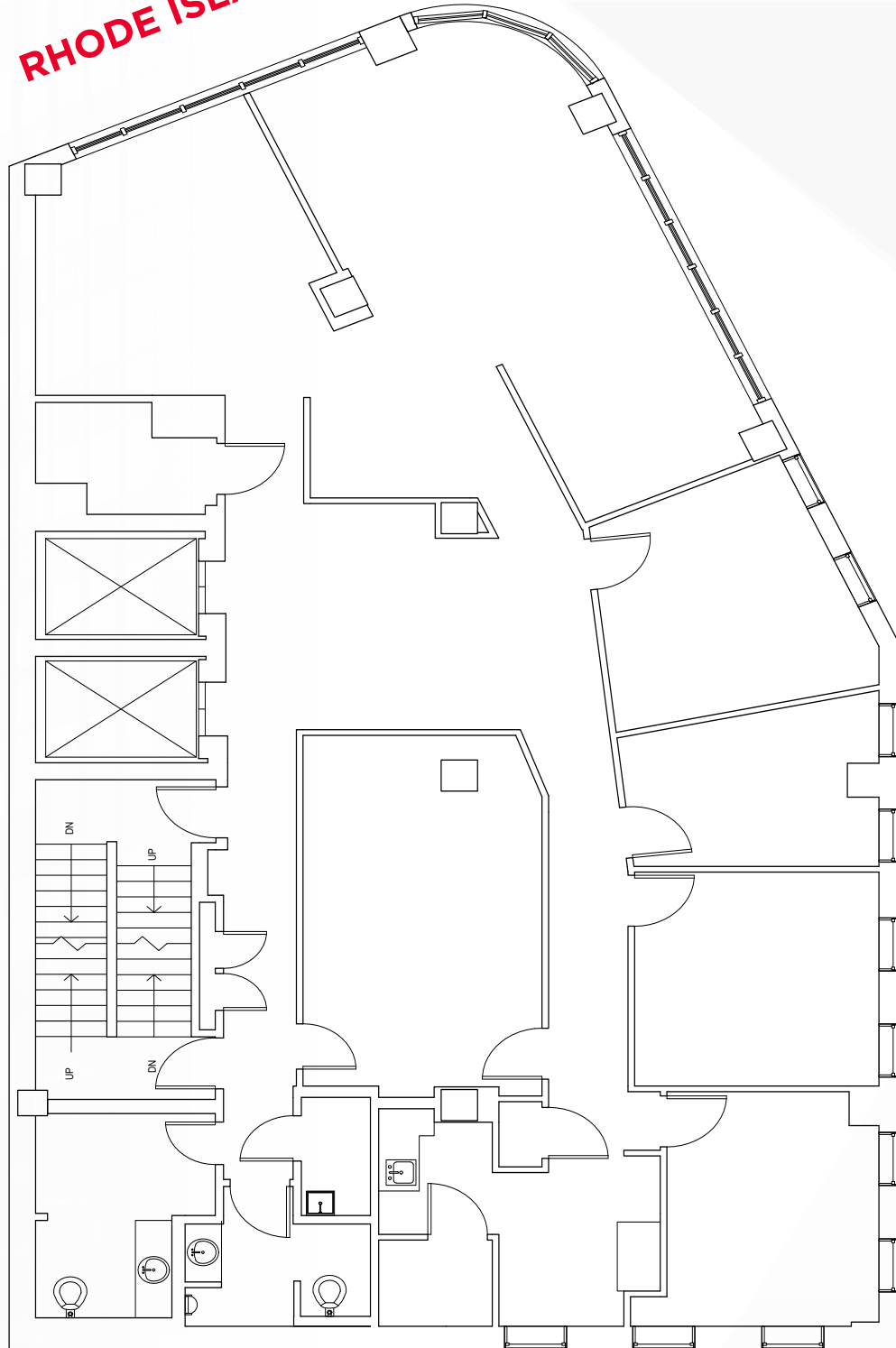


\$46.00
FULL SERVICE

10TH FLOOR

2,983 SF

RHODE ISLAND AVE

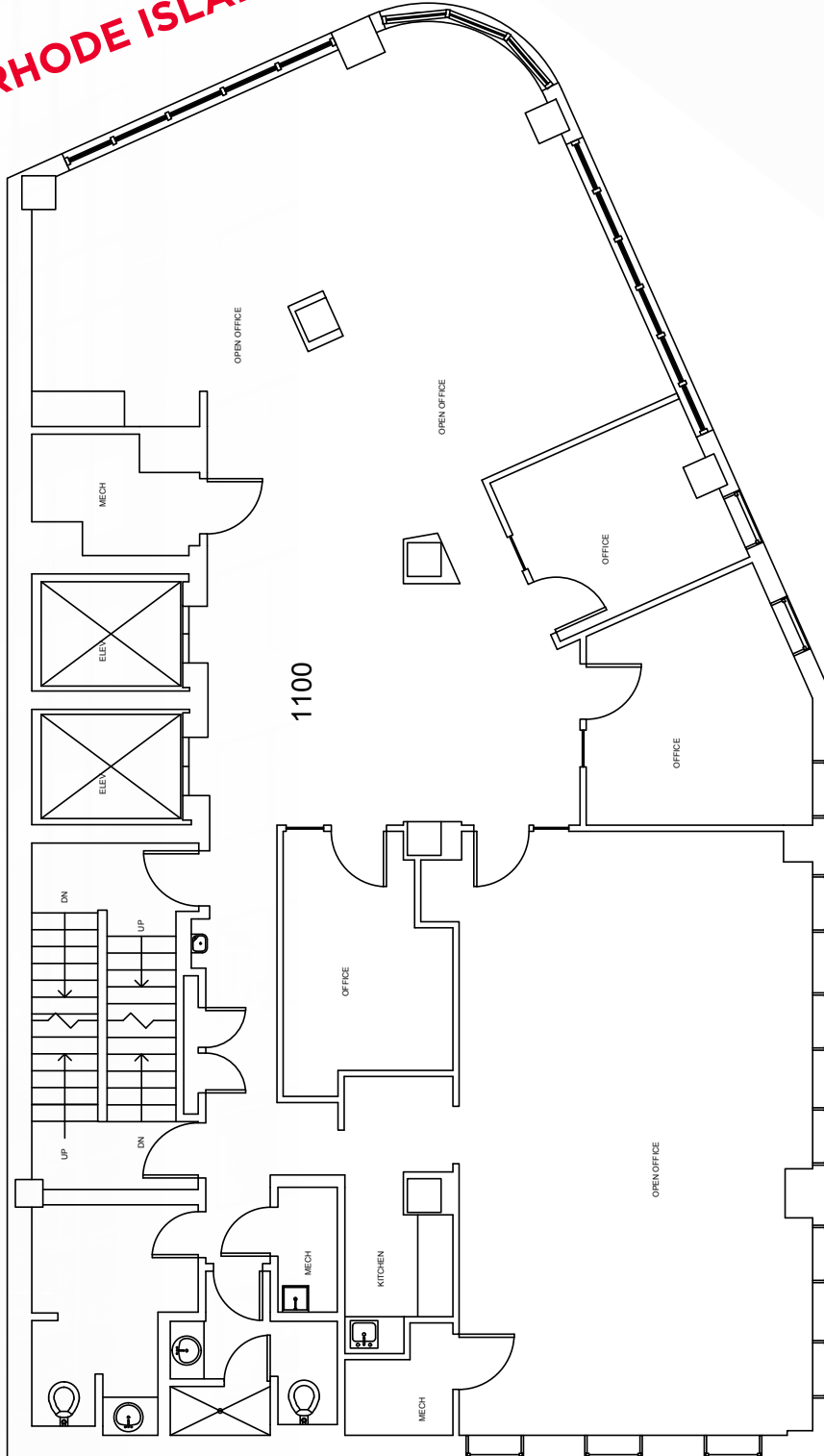


\$46.00
FULL SERVICE

11TH FLOOR

2,983 SF

RHODE ISLAND AVE

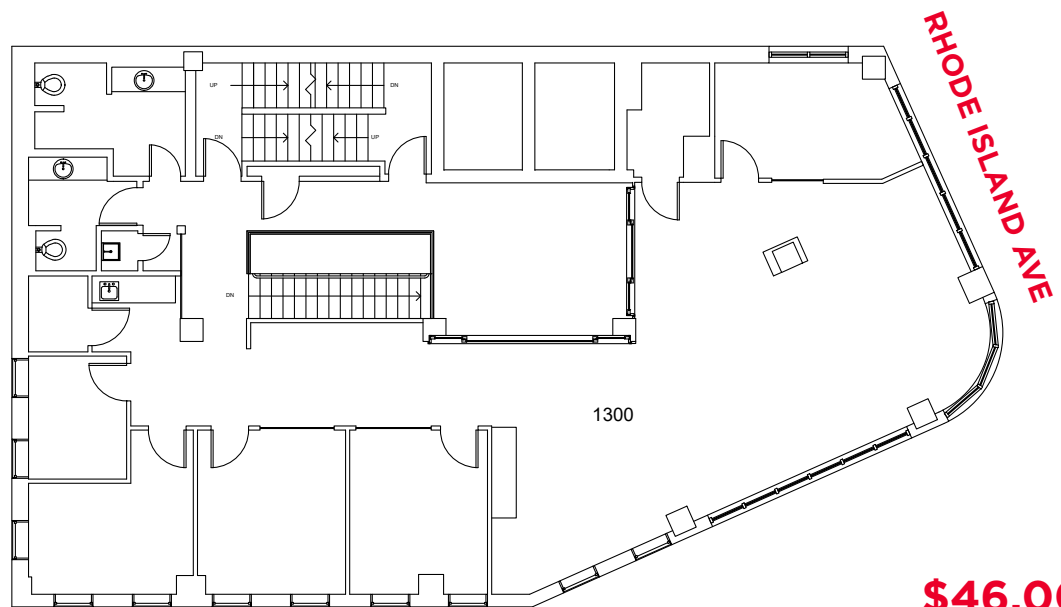
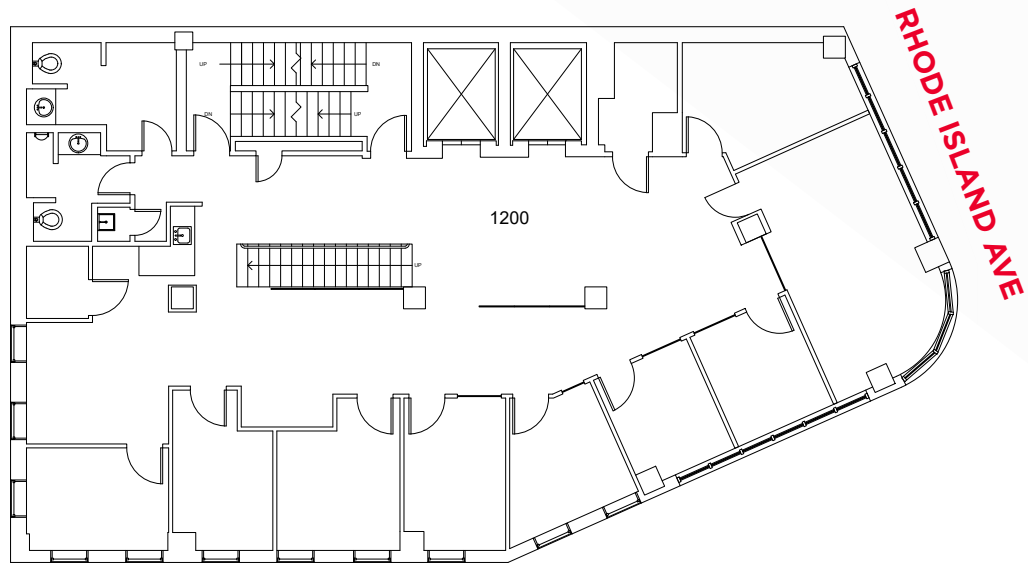
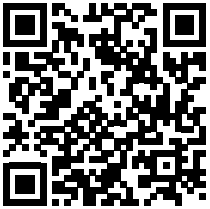


\$46.00
FULL SERVICE

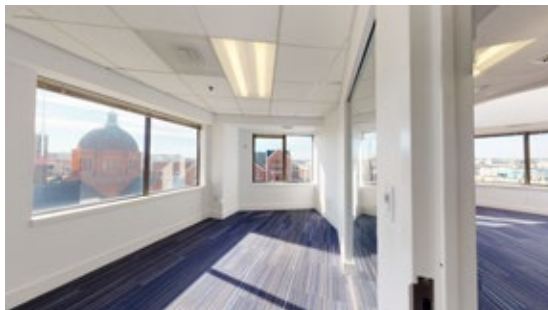
12TH / 13TH FLOOR

5,966 SF

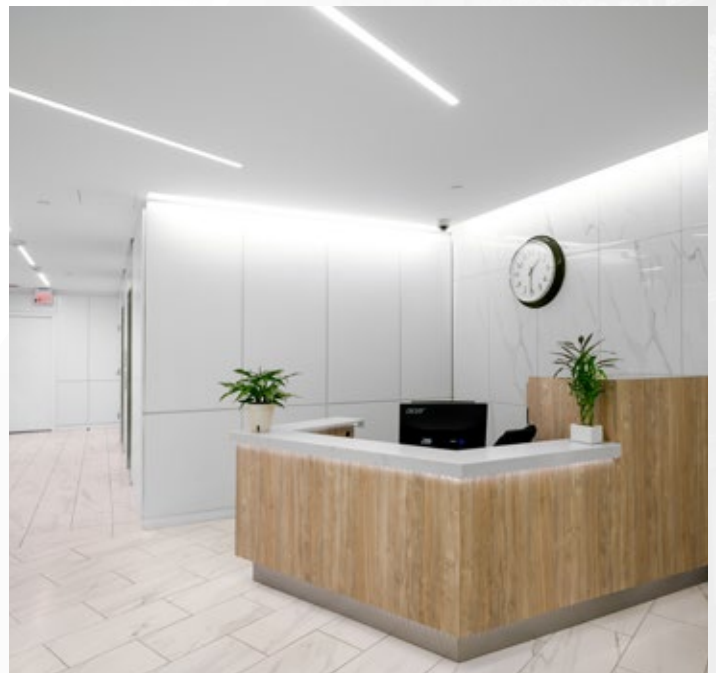
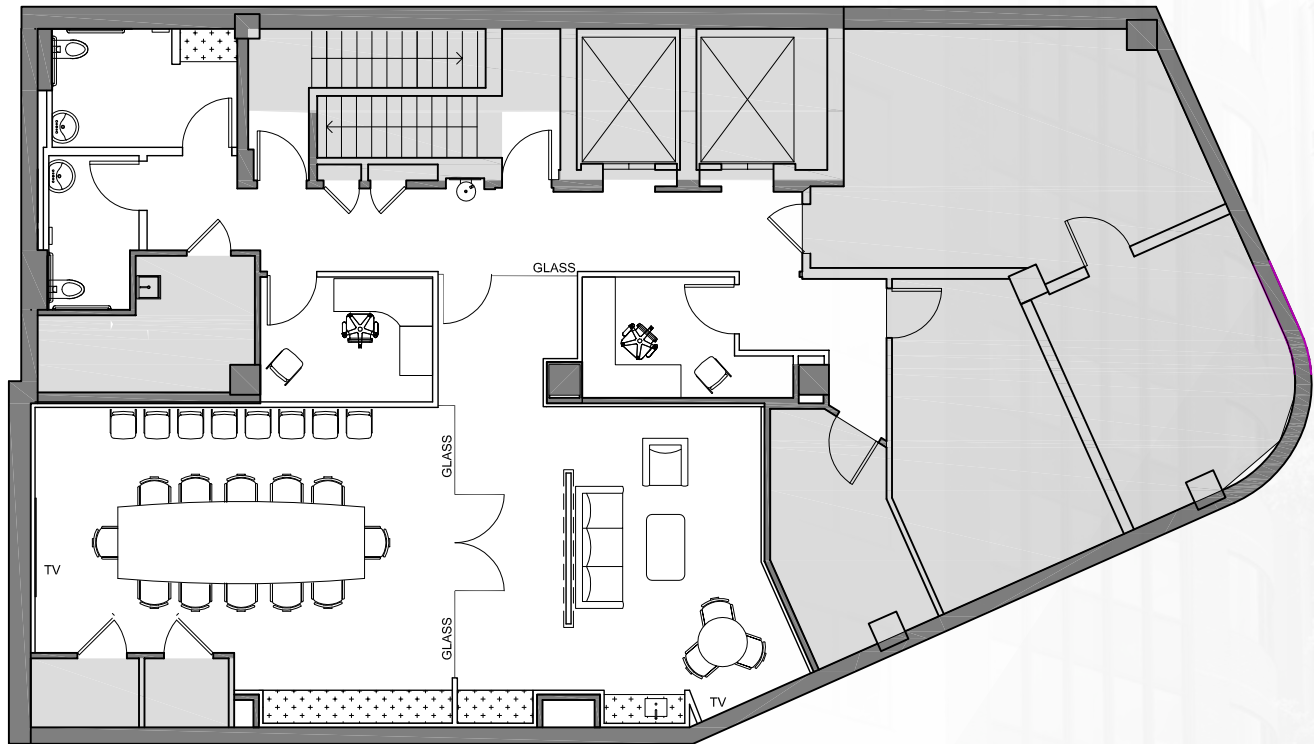
VIEW
360°
VIEW
TOUR



\$46.00
FULL SERVICE



NEWLY RENOVATED LOBBY, CONFERENCE CENTER, AND LOUNGE





**FOR MORE
INFORMATION
PLEASE CONTACT**

BRUCE PASCAL

bruce.pascal@cushwake.com
+1 202 463 1357

KYLE MCFADDEN

kyle.mcfadden@cushwake.com
+1 202 739 0362

1710

**RHODE
ISLAND**