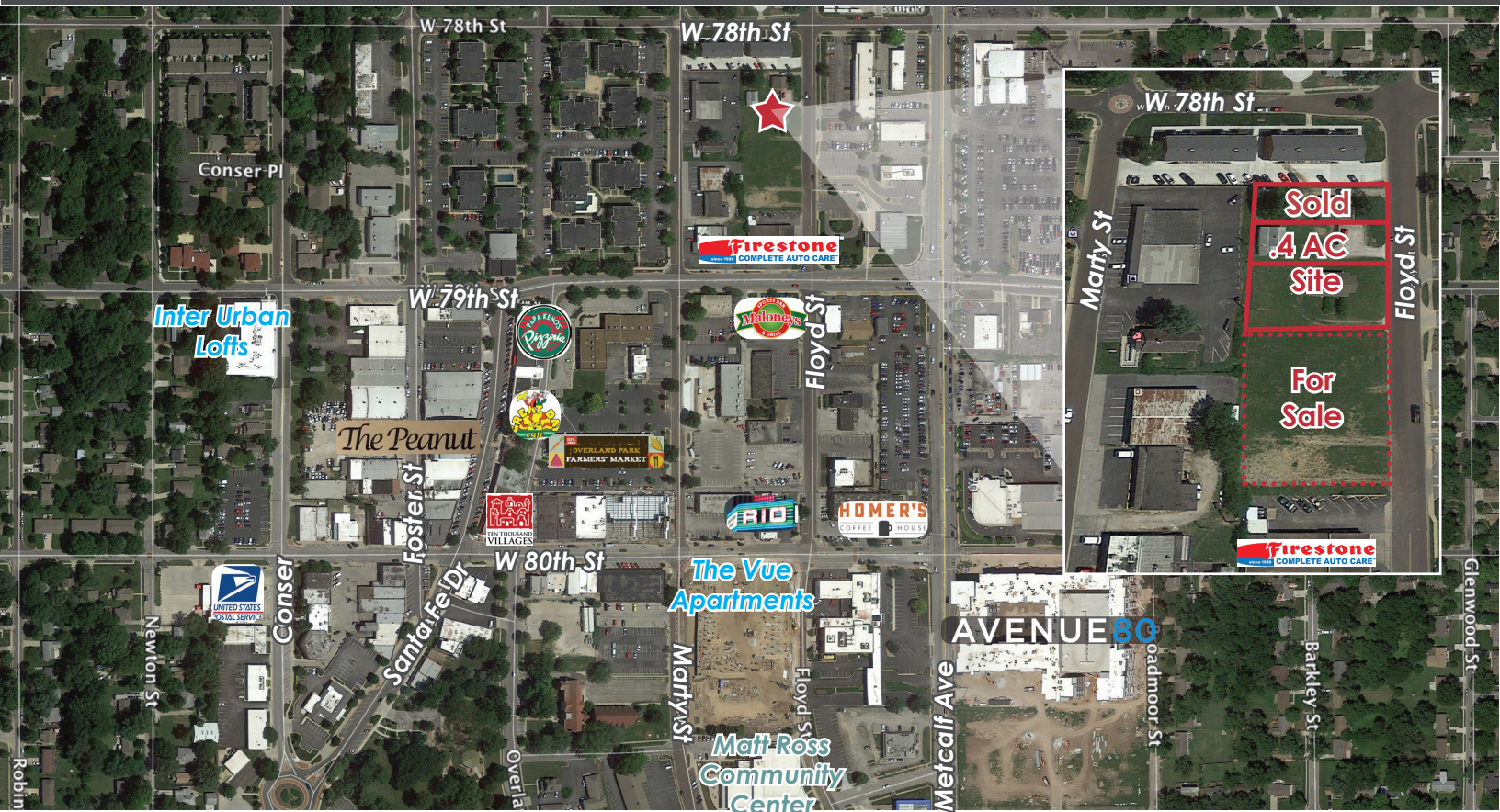


# 7810-7816 FLOYD ST

OVERLAND PARK, KS



## HIGHLIGHTS

- Redevelopment Opportunity in Downtown Overland Park
- Includes 2 Lots (125 FF x 140.72' Deep)
- .4 Acres with the ability to add an additional .56 acres
- All Utilities on Site
- Zoned DFD (Downtown Form District)

## FOR SALE

\$571,675

## DEMOGRAPHICS

	1 Mile	3 Mile	5 Mile
2019 POPULATION	12,485	103,262	263,475
2019 AVE HOUSEHOLD INCOME	\$68,411	\$87,207	\$101,263
2019 HOUSEHOLDS	6,113	48,064	120,408

### Terry Moody

Office: 913-945-3727

Mobile: 913-558-2083

Email: [moody@reececommercial.com](mailto:moody@reececommercial.com)

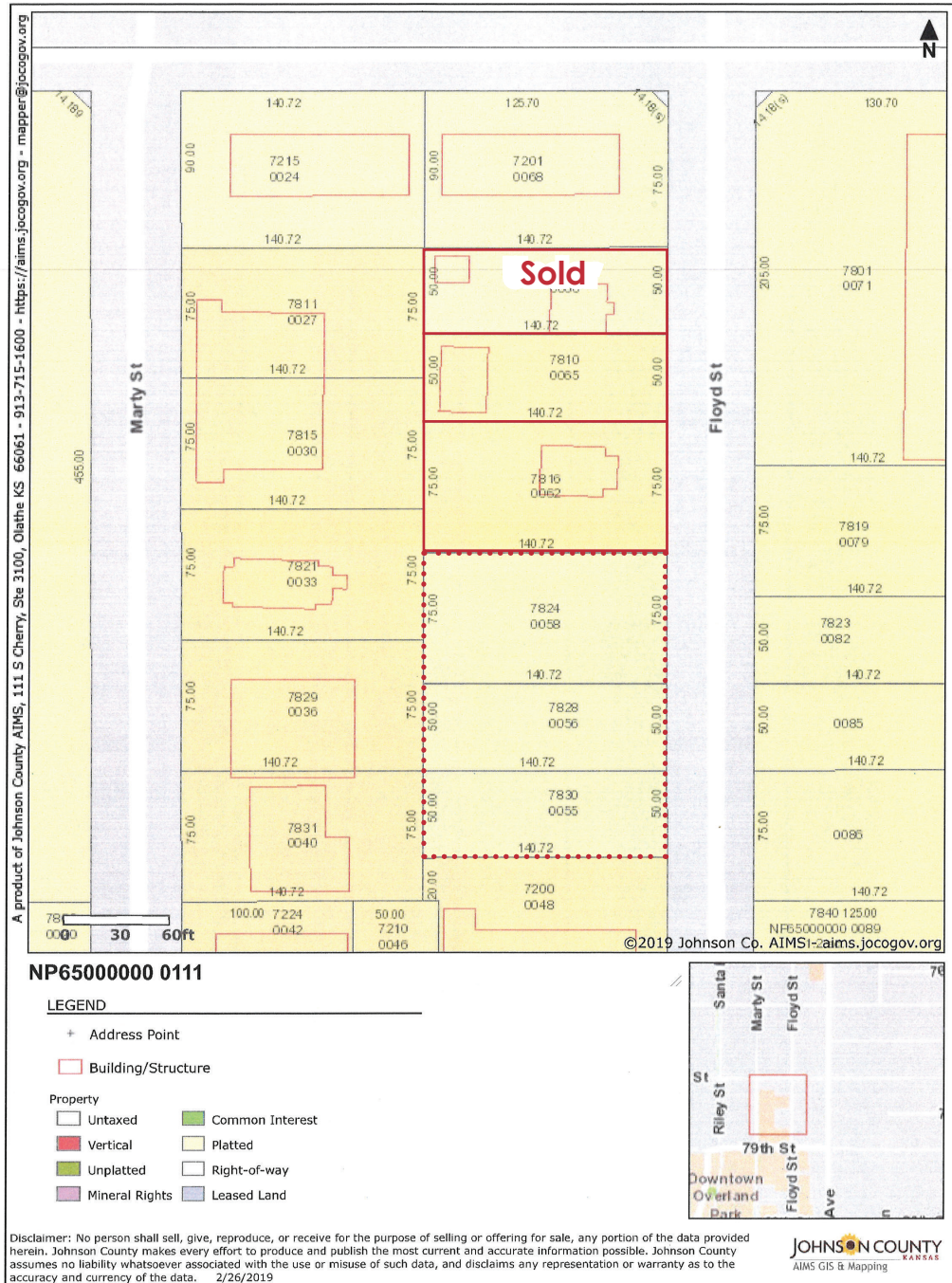
The information above has been obtained from sources believed reliable. While we do not doubt its accuracy we have not verified it and make no guarantee, warranty or representation about it. It is your responsibility to independently confirm its accuracy and completeness. Any projections, opinions, assumptions, or estimates used are for example only and do not represent the current or future performance of the property. You and your advisors should conduct a careful, independent investigation of the property to determine to your satisfaction the suitability of the property for your needs.

© 2019



# 7810-7816 FLOYD ST

OVERLAND PARK, KS



**Terry Moody**

Office: 913-945-3727

Mobile: 913-558-2083

Email: [moody@reececommercial.com](mailto:moody@reececommercial.com)

The information above has been obtained from sources believed reliable. While we do not doubt its accuracy we have not verified it and make no guarantee, warranty or representation about it. It is your responsibility to independently confirm its accuracy and completeness. Any projections, opinions, assumptions, or estimates used are for example only and do not represent the current or future performance of the property. You and your advisors should conduct a careful, independent investigation of the property to determine to your satisfaction the suitability of the property for your needs.

© 2019