

FOR LEASE

5,169 - 61,666 SF

8401

W. 102ND STREET

Pleasant Prairie, WI 53158



PROPERTY SUMMARY

- + Available Units
 - Suite 250 5,169 SF
 - Suite 300/400 43,494 SF
 - Suite 500 12,503 SF
- + Total Building Size: 72,220 SF
- + Year Built: 1991
- + Construction: Reinforced concrete
- + Parking: 258 car parking (building)
- + Lease Rate: Subject to Offer



CONTACT US

BRAD WEINER

First Vice President
+1 630 956 3650
brad.weiner@cbre.com

SAM BADGER, SIOR

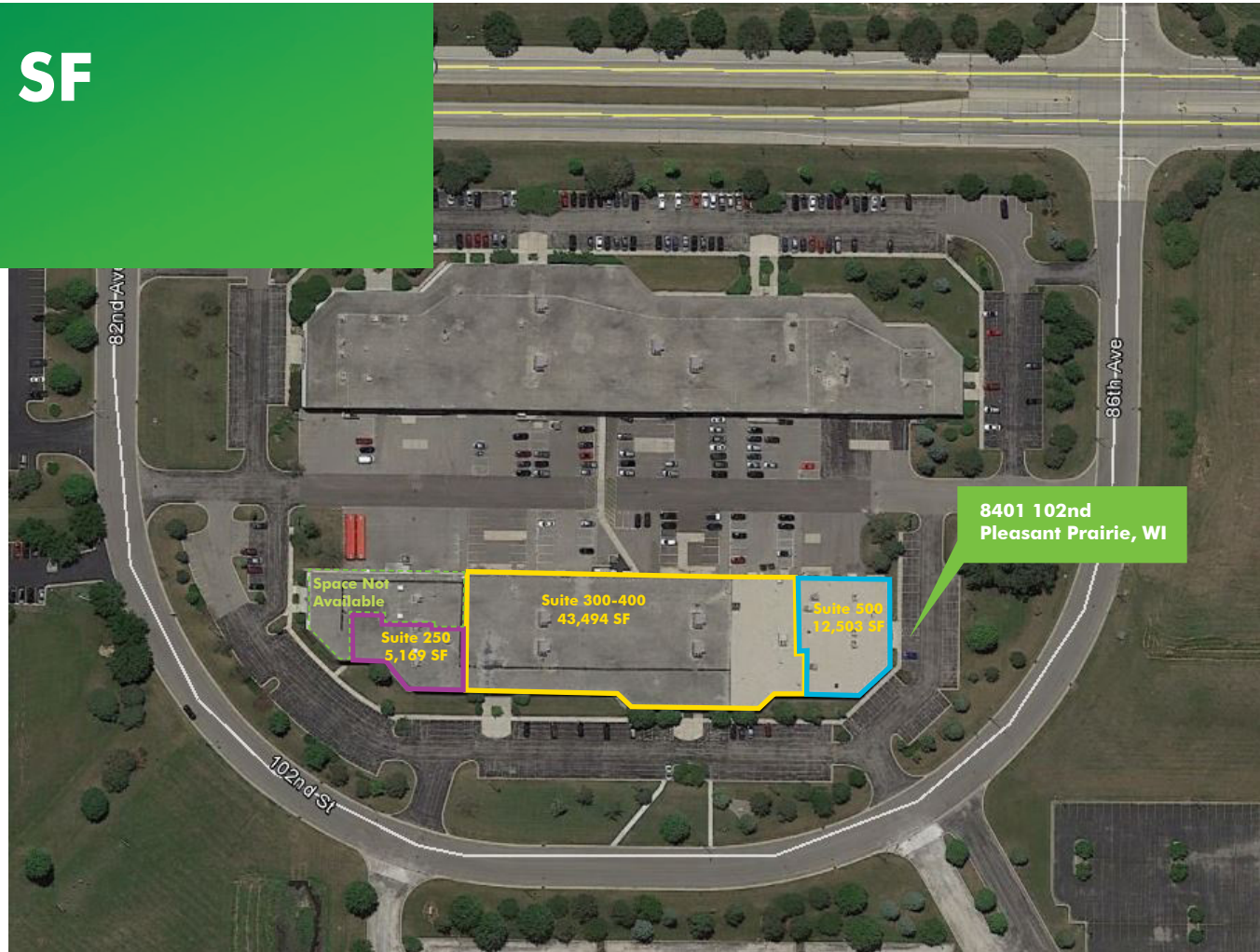
Senior Vice President
+1 847 310 2099
sam.badger@cbre.com

WHIT R. HEITMAN

Senior Vice President
+1 847 624 4947
whit.heitman@cbre.com

JARED PAFF

Vice President
+1 847 274 1444
jared.paff@cbre.com



www.cbre.com

CBRE

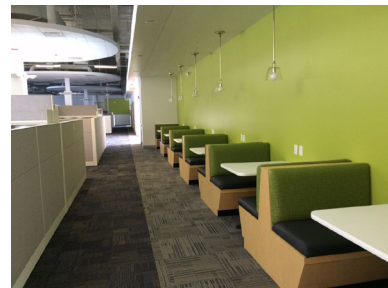
FOR LEASE
5,169 - 61,666 SF

8401
102ND STREET
Pleasant Prairie, WI 53158



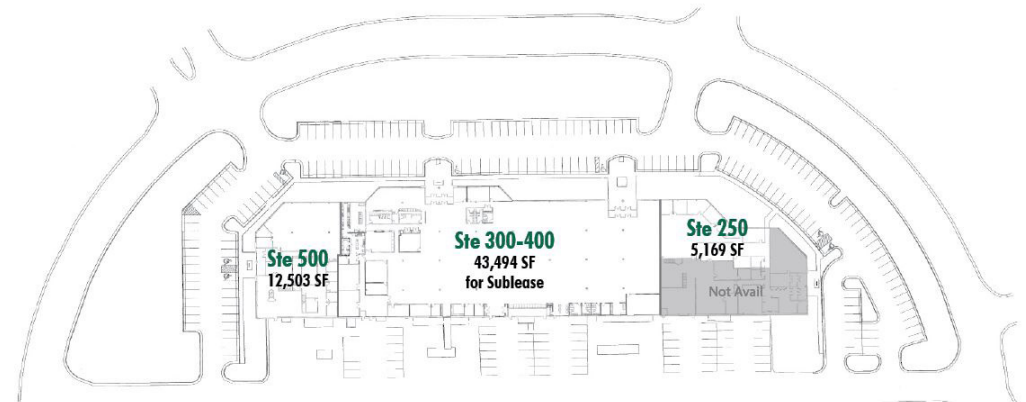
PROPERTY FEATURES FOR SUITES 300/400

- + 43,494 SF available in Suite 300/400
- + Ample parking spaces
- + Open floor plan / high ceilings - 18' clear
- + Great existing conditions, window-lined, great natural light
- + Plug & play space with 206 workstations
- + Executive offices, full-service cafeteria and fitness center with
- + On-site property management



LOCATION FEATURES

- + Located in prestigious LakeView Corporate Park
- + Close to hotels and retail shops
- + 1/2 mile from the Illinois / Wisconsin border

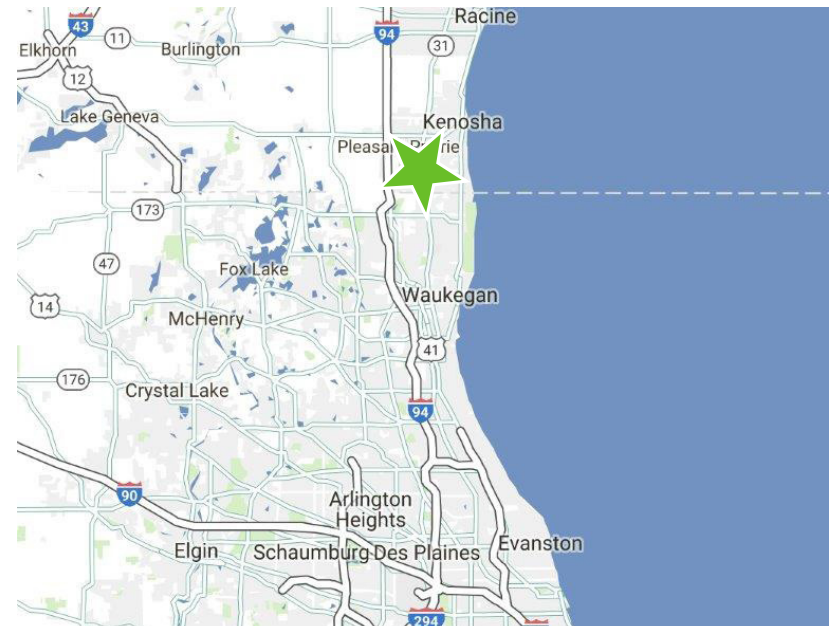
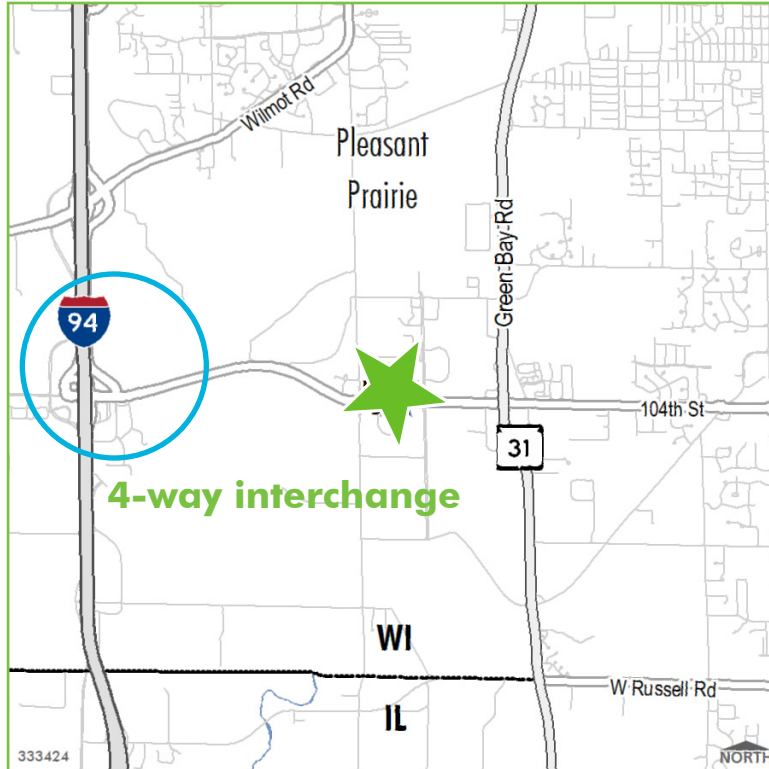


FOR LEASE
5,169 - 61,666 SF

8401
102ND STREET
Pleasant Prairie, WI 53158



PROPERTY LOCATION



© 2017 CBRE, Inc. This information has been obtained from sources believed reliable. We have not verified it and make no guarantee, warranty or representation about it. Any projections, opinions, assumptions or estimates used are for example only and do not represent the current or future performance of the property. You and your advisors should conduct a careful, independent investigation of the property to determine to your satisfaction the suitability of the property for your needs. Photos herein are the property of their respective owners and use of these images without the express written consent of the owner is prohibited. CBRE and the CBRE logo are service marks of CBRE, Inc. and/or its affiliated or related companies in the United States and other countries. All other marks displayed on this document are the property of their respective owners.

www.cbre.com

CBRE

BROKER DISCLOSURE TO CUSTOMERS

Prior to negotiating on your behalf the Broker must provide you the following disclosure statement:

BROKER DISCLOSURE TO CUSTOMERS

You are a customer of the broker. The broker is either an agent of another party in the transaction or a subagent of another broker who is the agent of another party in the transaction. The broker, or a salesperson acting on behalf of the broker, may provide brokerage services to you. Whenever the broker is providing brokerage services to you, the broker owes you, the customer, the following duties:

- The duty to provide brokerage services to you fairly and honestly.
- The duty to exercise reasonable skill and care in providing brokerage services to you.
- The duty to provide you with accurate information about market conditions within a reasonable time if you request it, unless disclosure of the information is prohibited by law.
- The duty to disclose to you in writing certain material adverse facts about a property, unless disclosure of the information is prohibited by law (**See DEFINITION OF MATERIAL ADVERSE FACTS**).
- The duty to protect your confidentiality. Unless the law requires it, the broker will not disclose your confidential information or the confidential information of other parties (**See CONFIDENTIALITY NOTICE TO CUSTOMERS**).
- The duty to safeguard trust funds and other property the broker holds.
- The duty, when negotiating, to present contract proposals in an objective and unbiased manner and disclose the advantages and disadvantages of the proposals.

Please review this information carefully. A broker or salesperson can answer your questions about brokerage services, but if you need legal advice, tax advice, or a professional home inspection, contact an attorney, tax advisor, or home inspector.

This disclosure is required by Section 452.135 of the Wisconsin statutes and is for information only. It is a plain-language summary of a broker's duties to a customer under section 452.133 (1) of the Wisconsin statutes.

CONFIDENTIALITY NOTICE TO CUSTOMERS

BROKER WILL KEEP CONFIDENTIAL ANY INFORMATION GIVEN TO BROKER IN CONFIDENCE, OR ANY INFORMATION OBTAINED BY BROKER THAT HE OR SHE KNOWS A REASONABLE PERSON WOULD WANT TO BE KEPT CONFIDENTIAL, UNLESS THE INFORMATION MUST BE DISCLOSED BY LAW OR YOU AUTHORIZE THE BROKER TO DISCLOSE PARTICULAR INFORMATION. A BROKER SHALL CONTINUE TO KEEP THE INFORMATION CONFIDENTIAL AFTER BROKER IS NO LONGER PROVIDING BROKERAGE SERVICES TO YOU.

THE FOLLOWING INFORMATION IS REQUIRED TO BE DISCLOSED BY LAW:

1. MATERIAL ADVERSE FACTS, AS DEFINED IN SECTION 452.01 (5g) OF THE WISCONSIN STATUTES (**SEE DEFINITION OF MATERIAL ADVERSE FACTS**).
2. ANY FACTS KNOWN BY THE BROKER THAT CONTRADICT ANY INFORMATION INCLUDED IN A WRITTEN INSPECTION REPORT ON THE PROPERTY OR REAL ESTATE THAT IS THE SUBJECT OF THE TRANSACTION.

TO ENSURE THAT THE BROKER IS AWARE OF WHAT SPECIFIC INFORMATION YOU CONSIDER CONFIDENTIAL, YOU MAY LIST THAT INFORMATION BELOW (**SEE CONFIDENTIAL INFORMATION**). AT A LATER TIME, YOU MAY ALSO PROVIDE THE BROKER WITH OTHER INFORMATION YOU CONSIDER TO BE CONFIDENTIAL.

CONFIDENTIAL INFORMATION: _____

NON-CONFIDENTIAL INFORMATION (The following information may be disclosed by Broker): _____

(INSERT INFORMATION YOU AUTHORIZE THE BROKER TO DISCLOSE SUCH AS FINANCIAL QUALIFICATION INFORMATION)

CONSENT TO TELEPHONE SOLICITATION

I/We agree that the Broker and any affiliated settlement service providers (for example, a mortgage company or title company) may call our/my home or cell phone number regarding issues, goods and services related to the real estate transaction until I/we withdraw this consent in writing.

List Home/Cell Numbers: _____

SEX OFFENDER REGISTRY

Notice: You may obtain information about the sex offender registry and persons registered with the registry by contacting the Wisconsin Department of Corrections on the Internet at: <http://offender.com.state.wi.us/public> or by phone at 877-234-0085.

BY INITIALING AND DATING BELOW I/WE ACKNOWLEDGE RECEIPT OF A COPY OF THIS DISCLOSURE AND THAT _____ and _____ are working

Sales Associate ▲

Sales Associate ▲

As: **(Owner's Listing Broker's Agent) (Buyer's/Tenant's Agent or Buyer's Broker's Agent)** **STRIKE ONE**

INITIALING THIS FORM TO ACKNOWLEDGE RECEIPT DOES NOT CREATE ANY LEGAL OBLIGATIONS TO BROKER.

Initials ▲

Date ▲

Print Name (optional) ▲

Initials ▲

Date ▲

Print Name (Optional) ▲

No representation is made as to the legal validity of any provision or the adequacy of any provision in any specific transaction.

DEFINITION OF MATERIAL ADVERSE FACTS

A "material adverse fact" is defined in Wis. Stat. § 452.01 (5g) as an adverse fact that a party indicates is of such significance, or that is generally recognized by a competent licensee as being of such significance to a reasonable party, that it affects or would affect the party's decision to enter into a contract or agreement concerning a transaction or affects or would affect the party's decision that a competent licensee generally recognizes will significantly and adversely affect the value of the property, significantly reduce the structural integrity of improvements to real estate, or present a significant health risk to occupants of the property, or information that indicates that a party to a transaction is not able to or does not intend to meet his or her obligations under a contract or agreement made concerning the transaction.