

Fully entitled drive-thru PAD for ground lease

SWC 91st Avenue & Olive Avenue
Peoria, AZ



**Get more
information**

James DeCremer
D 480 423 7958 | C 602 909 0957
james.decremer@avisonyoung.com

2720 E Camelback Road
Suite 150
Phoenix, AZ 85016
www.avisonyoung.com

Property overview

Fully entitled drive-thru PAD for ground lease
SWC 91st Ave & Olive Ave

Features



Fully entitled drive-thru PAD for ground lease buildable to 1,945 sf, C-2 zoning



Great visibility from Loop 101 Freeway



Easy access to a full diamond interchange at Loop 101 & Olive Ave



Close proximity to some of the West Valley's premier destinations such as Westgate & State Farm Stadium

Notable nearby tenant mix

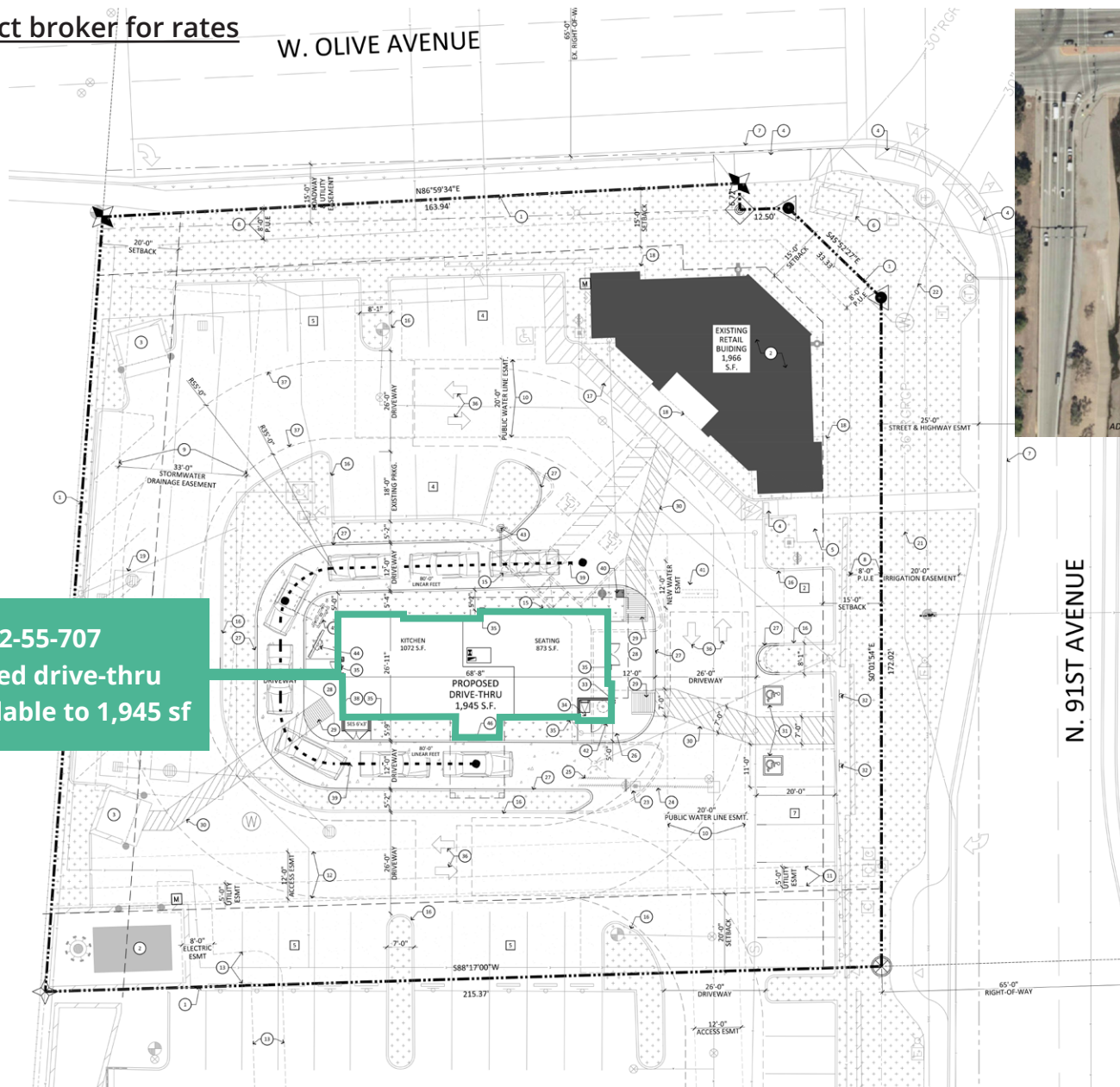


Site plan & availability

Fully entitled drive-thru PAD for ground lease
SWC 91st Ave & Olive Ave



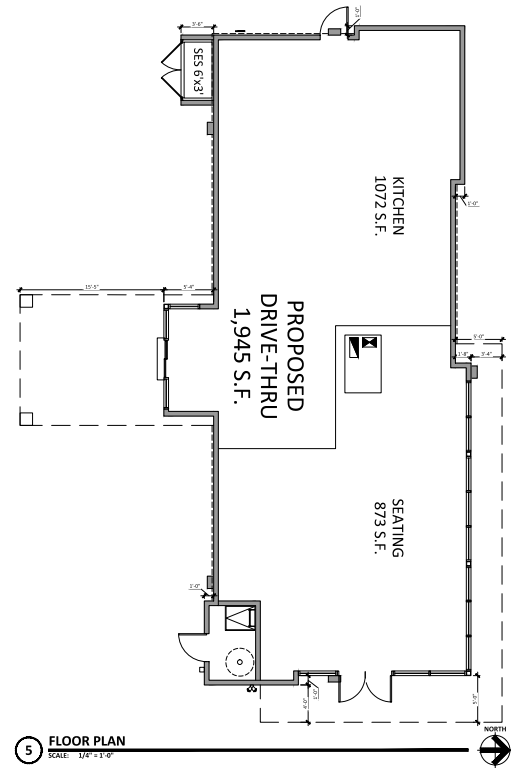
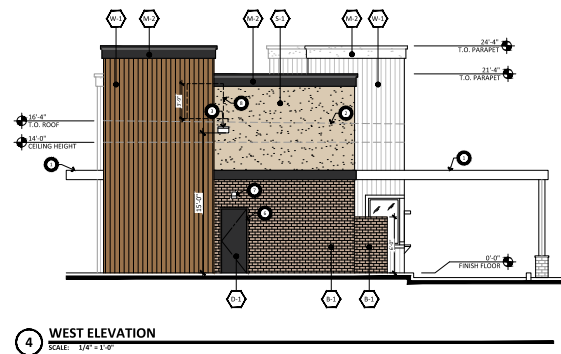
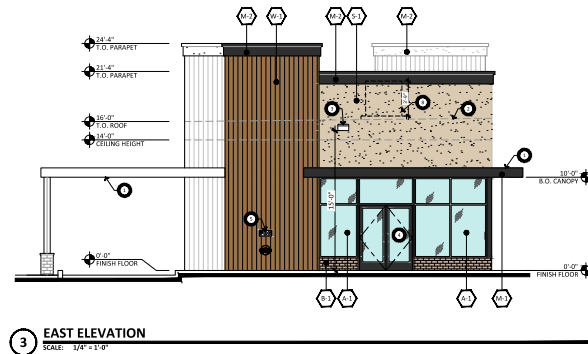
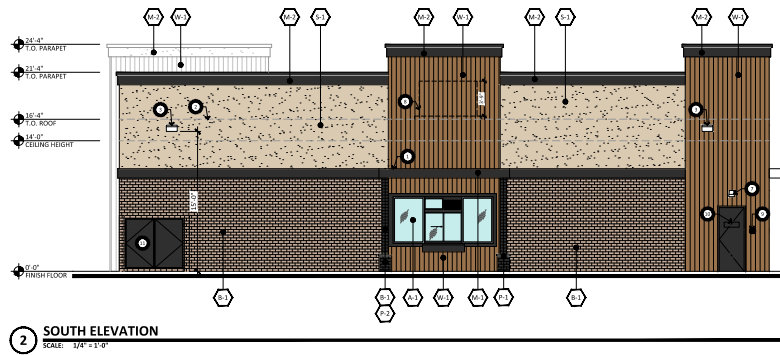
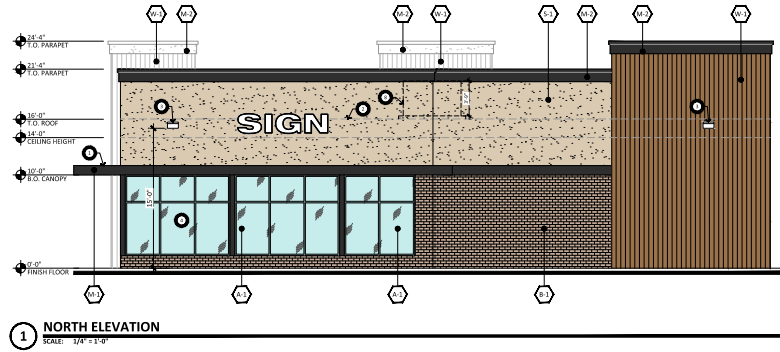
Contact broker for rates



142-55-707
Proposed drive-thru
PAD buildable to 1,945 sf

Site elevations

Fully entitled drive-thru PAD for ground lease
SWC 91st Ave & Olive Ave





Trade area


Fully entitled drive-thru PAD for ground lease
SWC 91st Ave & Olive Ave





Demographics

	1-mile	3-miles	5-miles
Population	16,584	115,625	322,667


	1-mile	3-miles	5-miles
Median age	36.4	39.3	37.7

	1-mile	3-miles	5-miles
Daytime employment	3,198	27,077	65,811

	1-mile	3-miles	5-miles
Avg. HH income	\$95,936	\$90,315	\$92,470

	1-mile	3-miles	5-miles
HH units	6,313	49,598	130,521

Traffic counts

	Olive Avenue	±25,742 cpd
	Loop-101 Freeway	±169,785 cpd

© 2025 Avison Young - Arizona, Ltd. All rights reserved. E. & O.E.: The information contained herein was obtained from sources which we deem reliable and, while thought to be correct, is not guaranteed by Avison Young. Members of the ownership group are licensed real estate brokers in Arizona.

