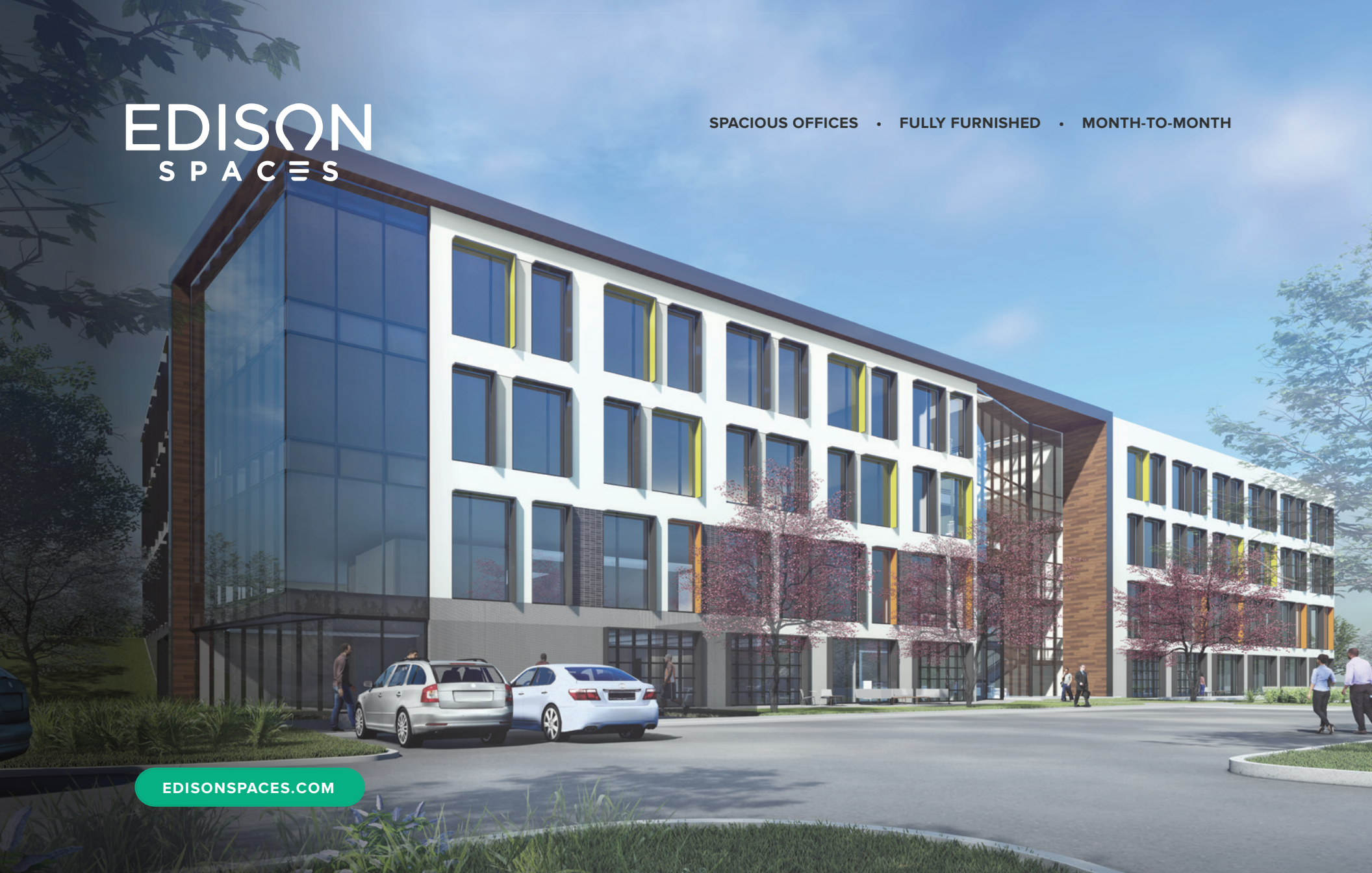


EDISON SPACES

SPACIOUS OFFICES • FULLY FURNISHED • MONTH-TO-MONTH

[EDISONSPACES.COM](https://edisonspaces.com)



Thanks

Thank you for showing interest in Edison Spaces. Hopefully now you can see why our office spaces are hailed by many as the best in St. Louis.

When you're ready to claim your space, just head over to edisonspaces.com/offices, select your office and follow the simple online booking process. You could be moving in tomorrow!



FAST WI-FI

Fast Wi-Fi in every office, plus an Ethernet port just in case you like wires.



CONFERENCE ROOMS

High-tech conference rooms that are sure to impress at your next client meeting.



FULLY FURNISHED

With full-sized desks, comfy chairs, couches and a mini refrigerator, our offices are ready to move in.



WHITEBOARDS

A place to share your great ideas with the team.



CLEANING SERVICES

Need help keeping things tidy? We offer a cleaning service that frees you up to get more work done.



NETWORK PRINTER

Get more work done with our professional printer, copier and scanner.



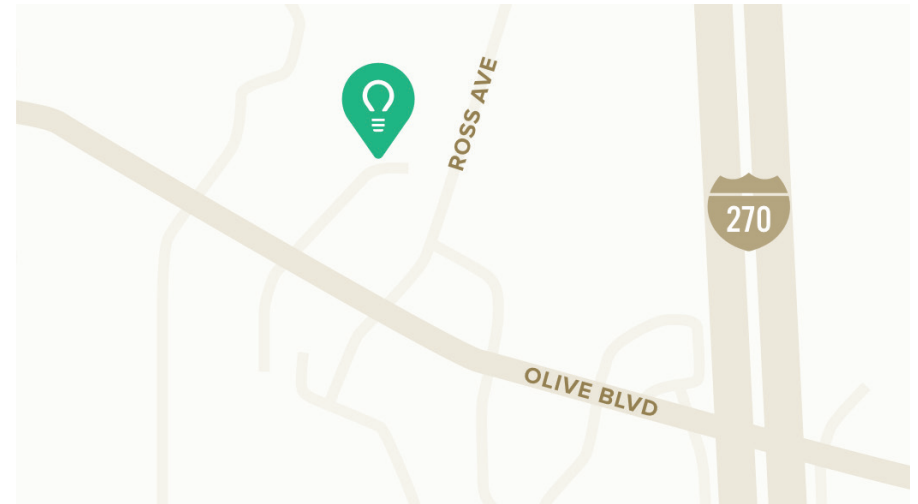
BREAK ROOM

Don't eat at your desk. Use one of our break rooms equipped with microwaves and an ice machine.



UTILITIES INCLUDED






Our flat-fee pricing includes utilities and a cleaning service at no extra charge.



Edge@West

12645 OLIVE BLVD
CREVE COEUR, MO 63141



-  38 office spaces
-  2 conference rooms
-  Common areas
-  Network printer/copier
-  Free parking



AMENITIES

A modern office lobby with a large green modular sofa, a circular pendant light, and a staircase. The space is bright and open, with large windows and a concrete floor. A large potted plant is visible near the windows.

EDGE @ WEST'S amenities are designed to support a culture of collaboration. They allow tenants to maximize seating efficiency within their space.

WI-FI ACCESS THROUGHOUT

STAFFED COFFEE BAR

BASKETBALL COURT

MULTIPLE COLLABORATION AREAS

OPEN CENTRAL STAIRS

HUDDLE ROOMS

DOUBLE ATRIUM

FIRST FLOOR ROLL-UP DOORS

SOFT SEATING AREAS

FIREPLACES

PUTTING GREEN

MICROMART

OUTDOOR LIVING ROOM

FITNESS CENTER

In addition to the building amenities, EDGE @ WEST is located within walking distance to multiple dining and retail service options.



314-353-9800

JESSICA RENFREW

If you have any questions or want
help securing one or more offices,
give me a call!

Opportunity
LOOKS LIKE
WORK