



100 W Willow Street - Suite 409 | Visalia, CA

Property For Sale or Lease

1005 N Demaree Street
Visalia, California 93291
O | 559.754.3020
F | 559.429.4016
www.mdgre.com

GRAHAM | **& ASSOCIATES**

Matt Graham
Lic# 01804235
www.mdgre.com

to learn more, visit: www.mdgre.com

PROPERTY DETAILS

Address 100 W Willow Street - Suite 409 | Visalia, CA

Square Feet Available 1,640 +/- Sq. Ft. - Office
200 +/- Sq. Ft. - Patio

Zoning CDT

Lease Rate \$2.50 Per Sq. Ft. Plus CAM Charges

Sales Price \$451,000.00



Contact Broker:
Matt Graham
Lic# 01804235

to learn more, visit: www.mdgre.com

1005 N Demaree Street
Visalia, California 93291
O | 559.754.3020

PLEASE NOTE: ALL INFORMATION AND REPRESENTATION MADE HEREIN, WHILE NOT GUARANTEED, HAVE BEEN SECURED FROM SOURCES WE BELIEVE TO BE RELIABLE, HOWEVER, THEY ARE NOT WARRANTED BY MATT GRAHAM & ASSOCIATES AND ARE SUBJECT TO CHANGE WITHOUT NOTICE.

PROPERTY DETAILS

Stunning Professional Office Space for Lease in 100 Willow Plaza, Downtown Visalia

Discover a beautifully appointed office space in the heart of downtown Visalia, located in the prestigious 100 Willow Plaza building. This expansive office features four full offices, two of which offer breathtaking views of downtown Visalia, complete with stunning sunrises and picturesque mountain vistas.

In addition to the private offices, the space includes a large library/conference room that opens onto a 400-foot Northwest facing balcony, perfect for enjoying the vibrant atmosphere of the city.

Key features include:

- A kitchen equipped with a full-size fridge and a cozy eating area.
- A spacious waiting room for clients and guests.
- A bullpen area with multiple work spaces.
- Beautiful views from multiple vantage points, enhancing the workspace experience.
- Common restrooms within the building.
- Three designated parking spaces located on the 4th floor of the adjoining parking structure.
- Fully furnished for your convenience.

Situated just one block from major restaurants, this office space combines functionality with a prime location. Don't miss the opportunity to elevate your professional environment. For further details, please call.



Contact Broker:

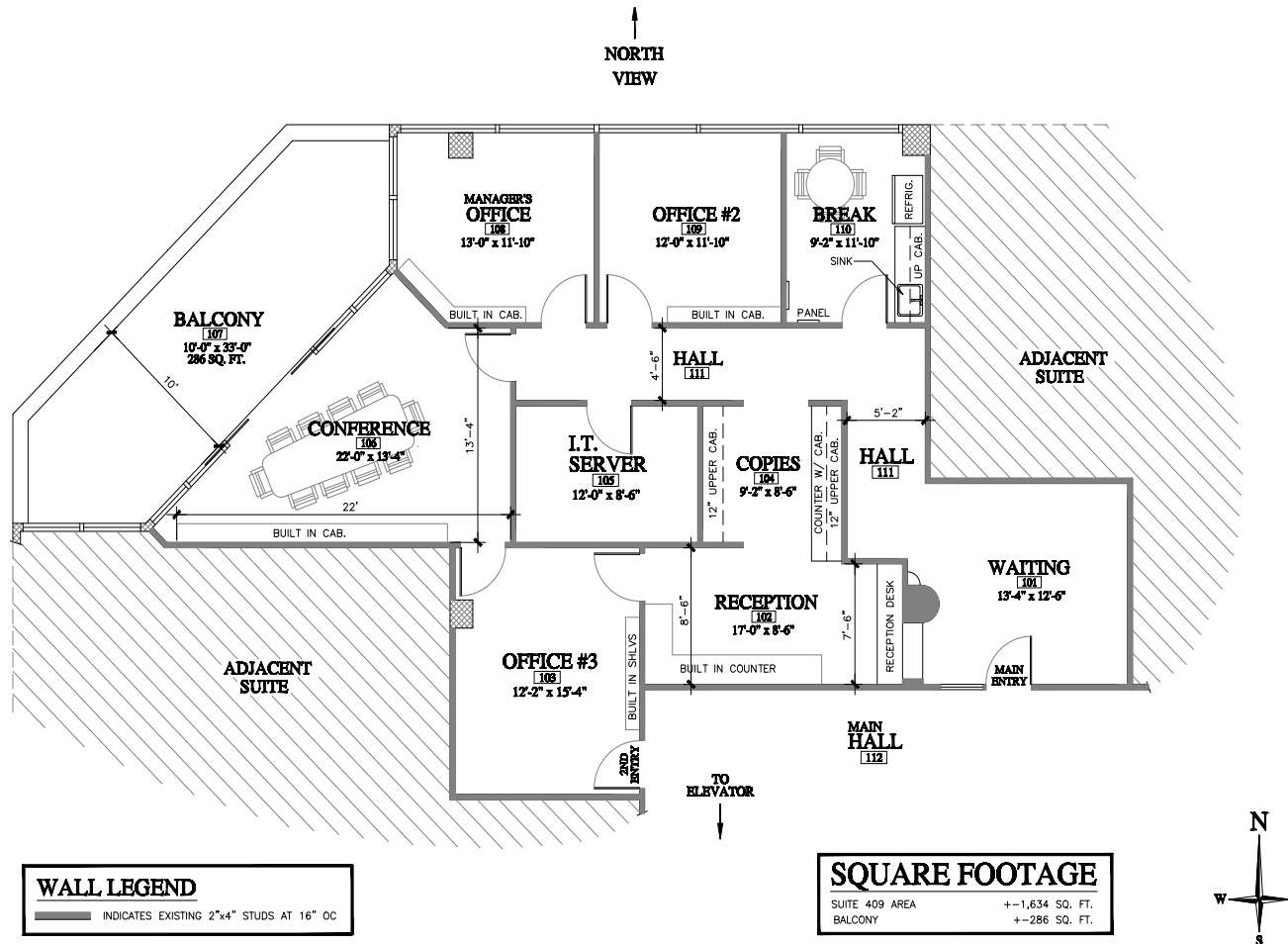
Matt Graham
Lic# 01804235

to learn more, visit: www.mdgre.com

1005 N Demaree Street
Visalia, California 93291
O | 559.754.3020

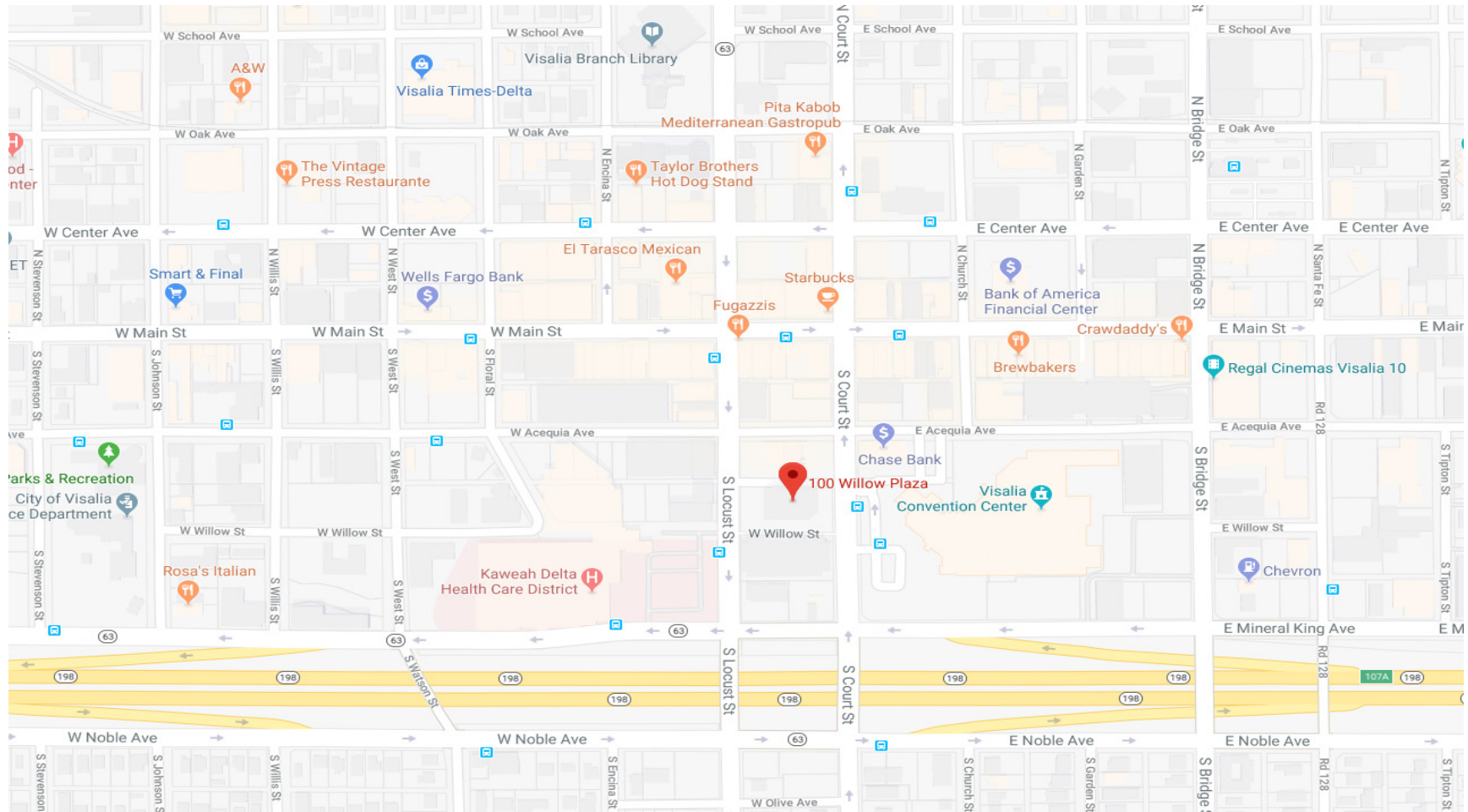
PLEASE NOTE: ALL INFORMATION AND REPRESENTATION MADE HEREIN, WHILE NOT GUARANTEED, HAVE BEEN SECURED FROM SOURCES WE BELIEVE TO BE RELIABLE, HOWEVER, THEY ARE NOT WARRANTED BY MATT GRAHAM & ASSOCIATES AND ARE SUBJECT TO CHANGE WITHOUT NOTICE.

FLOOR PLAN



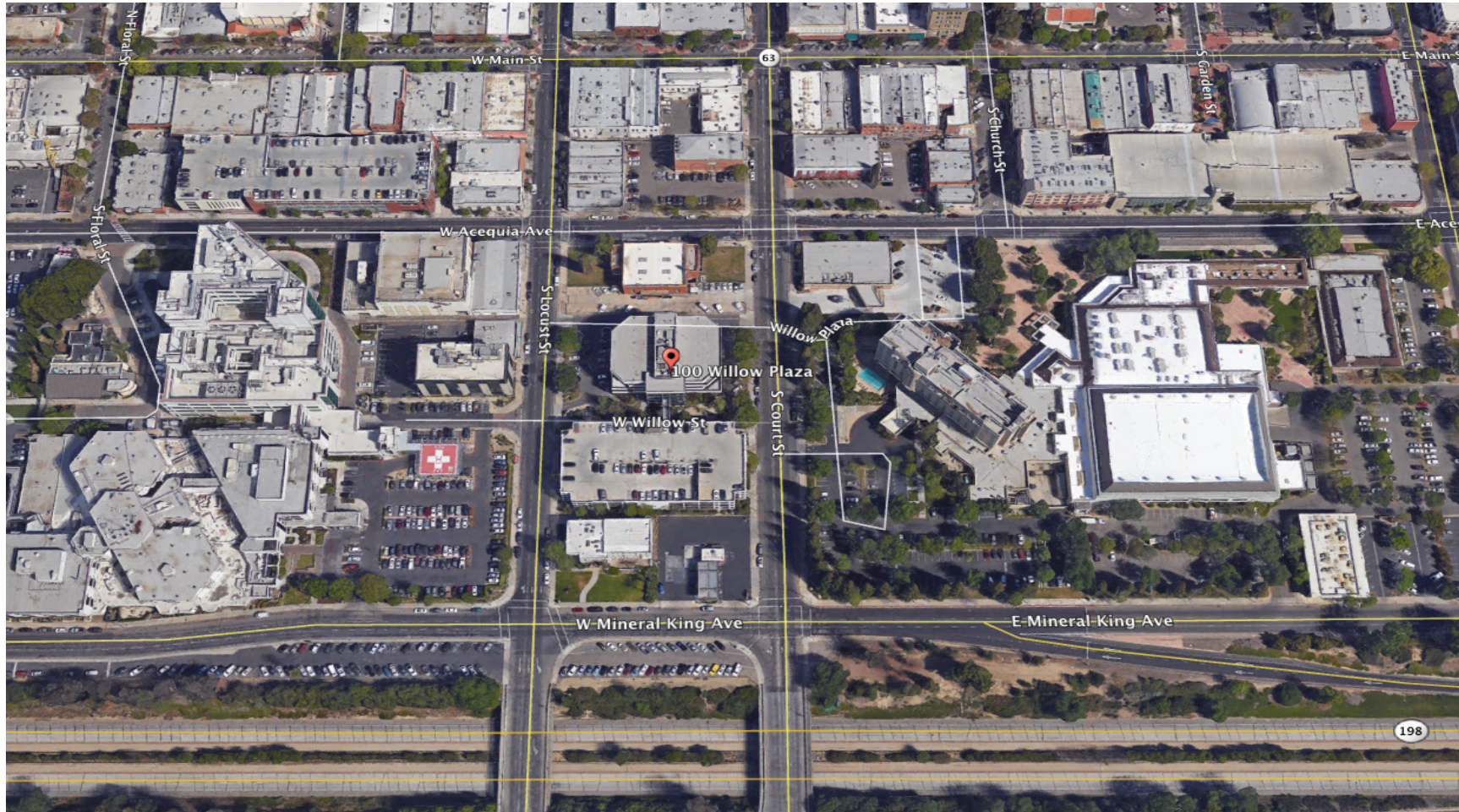
PLEASE NOTE: ALL INFORMATION AND REPRESENTATION MADE HEREIN, WHILE NOT GUARANTEED, HAVE BEEN SECURED FROM SOURCES WE BELIEVE TO BE RELIABLE, HOWEVER, THEY ARE NOT WARRANTED BY MATT GRAHAM & ASSOCIATES AND ARE SUBJECT TO CHANGE WITHOUT NOTICE.

LOCATION MAP



PLEASE NOTE: ALL INFORMATION AND REPRESENTATION MADE HEREIN, WHILE NOT GUARANTEED, HAVE BEEN SECURED FROM SOURCES WE BELIEVE TO BE RELIABLE, HOWEVER, THEY ARE NOT WARRANTED BY MATT GRAHAM & ASSOCIATES AND ARE SUBJECT TO CHANGE WITHOUT NOTICE.

PROPERTY LAYOUT



PLEASE NOTE: ALL INFORMATION AND REPRESENTATION MADE HEREIN, WHILE NOT GUARANTEED, HAVE BEEN SECURED FROM SOURCES WE BELIEVE TO BE RELIABLE, HOWEVER, THEY ARE NOT WARRANTED BY MATT GRAHAM & ASSOCIATES AND ARE SUBJECT TO CHANGE WITHOUT NOTICE.

PROPERTY PHOTOS



PROPERTY PHOTOS



PROPERTY PHOTOS

