

**FOR SALE**

**4157**

**4161**

**4163**

**S MAIN ST**

LOS ANGELES • CA 90037

**±17,200 SQ. FT.**  
TOTAL BUILDINGS SIZE

**±21,516 SQ. FT.**  
OF LAND

**3-BUILDING COMPLEX WITH  
SECURE FENCED YARD**

**\$2,550,000 OR \$148.25 PSF ON BLDGS**

**Jim Halferty**

Principal | LIC NO 01212024

323.767.2113

[jhalferty@lee-associates.com](mailto:jhalferty@lee-associates.com)

Lee & Associates | Los Angeles Central  
5675 Telegraph Rd, Ste 300, Los Angeles, CA 90040

**MAJOR PRICE REDUCTION!**



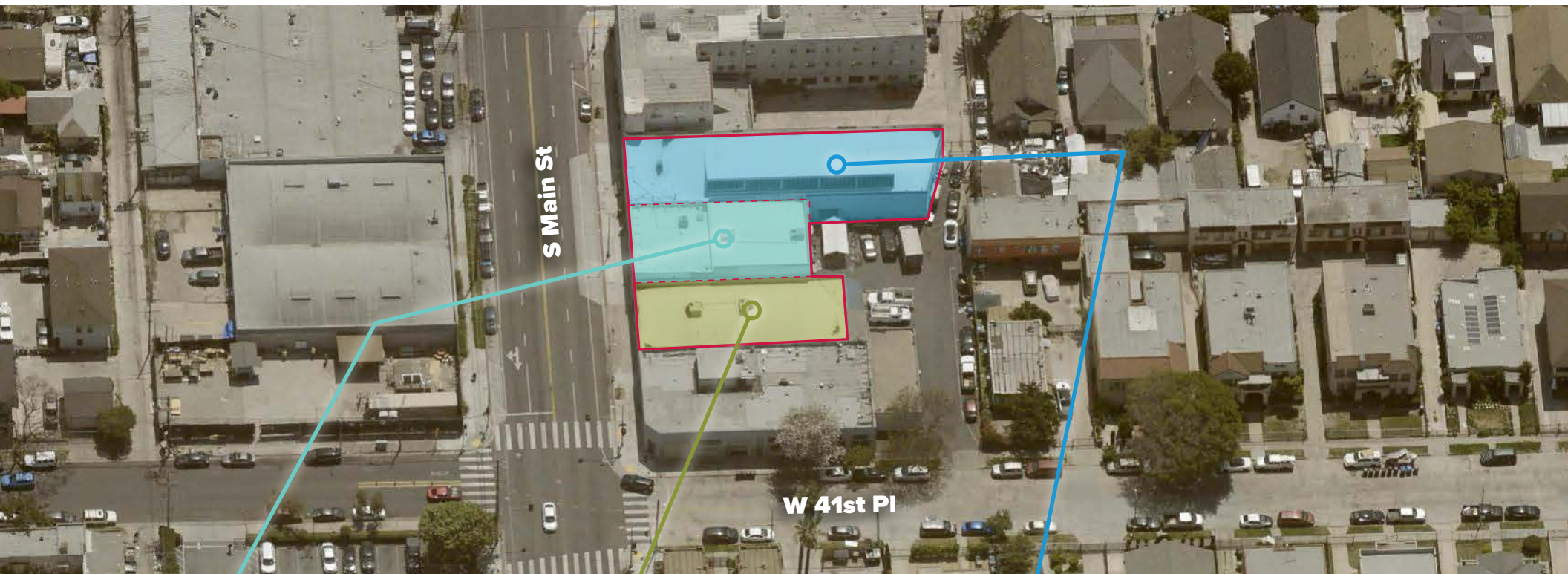
**LEE &  
ASSOCIATES**

COMMERCIAL REAL ESTATE SERVICES

LOCAL EXPERTISE. INTERNATIONAL REACH. WORLD CLASS.

[LEE-ASSOCIATES.COM](http://LEE-ASSOCIATES.COM)





### **4161 S Main St**

Overview

2 Story Building ±6,500 SF in Size

Now Vacant

3 Restrooms

7 Car Parking

Zoning: CM-1

### **4157 S Main St**

Overview

±4,200 SF Building

Leased Until February 2028

2 Restrooms

3 Phase Power

4 Car Parking in Rear

Built in 1951

Zoning: CM-1

### **4163 S Main St**

Overview

±6,500 SF Building

Leased Month-to-Month

Bow-Truss Ceiling

Skylights

6 Car Parking

Built in 1951

Zoning: CM-1

***3 Building Campus For Sale Near Downtown Los Angeles  
with Private Fenced Yard for Parking and loading***



# PROPERTY PHOTOS



4157 S Main St





# PROPERTY PHOTOS



4161 S Main St





# PROPERTY PHOTOS

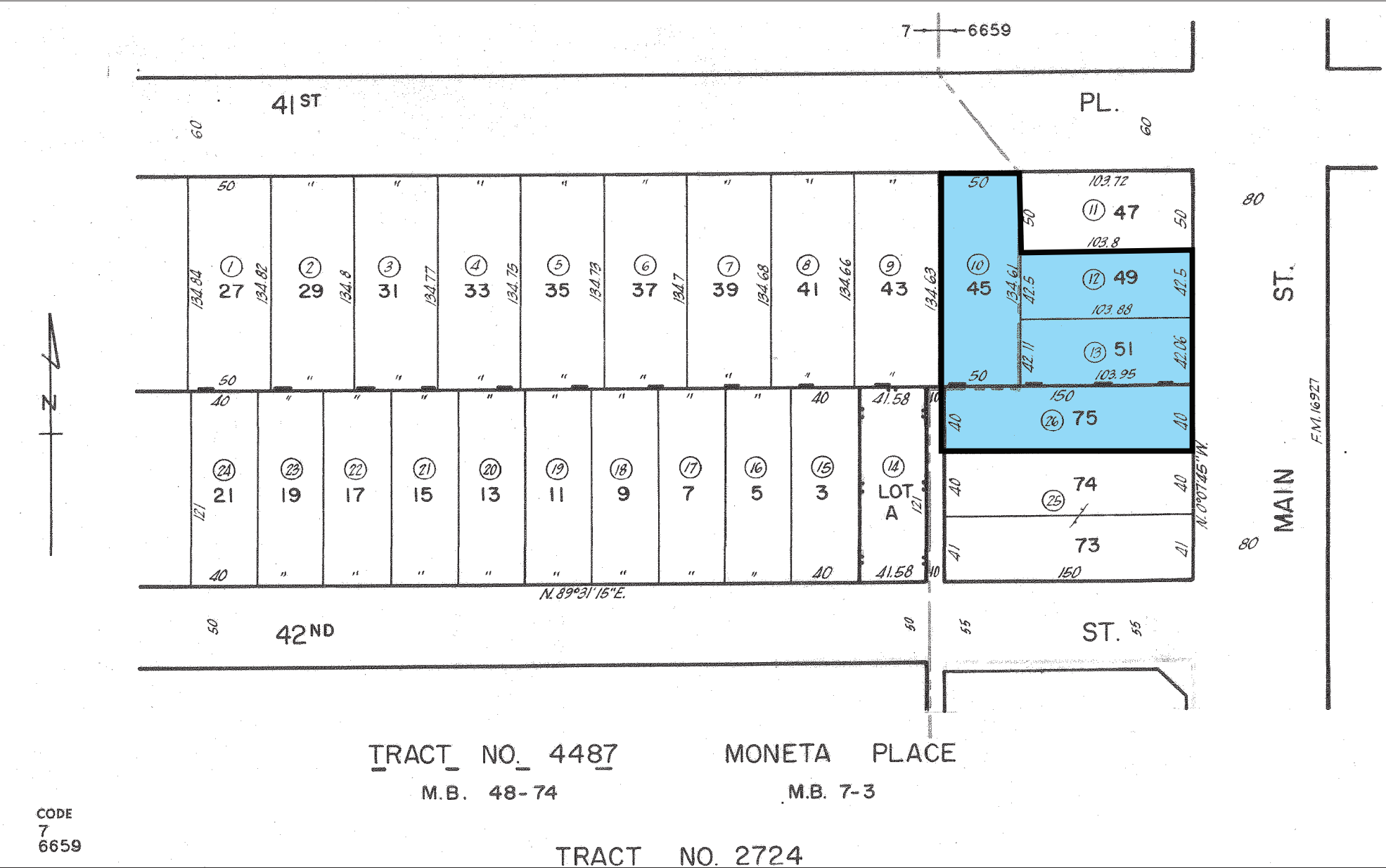


4163 S Main St



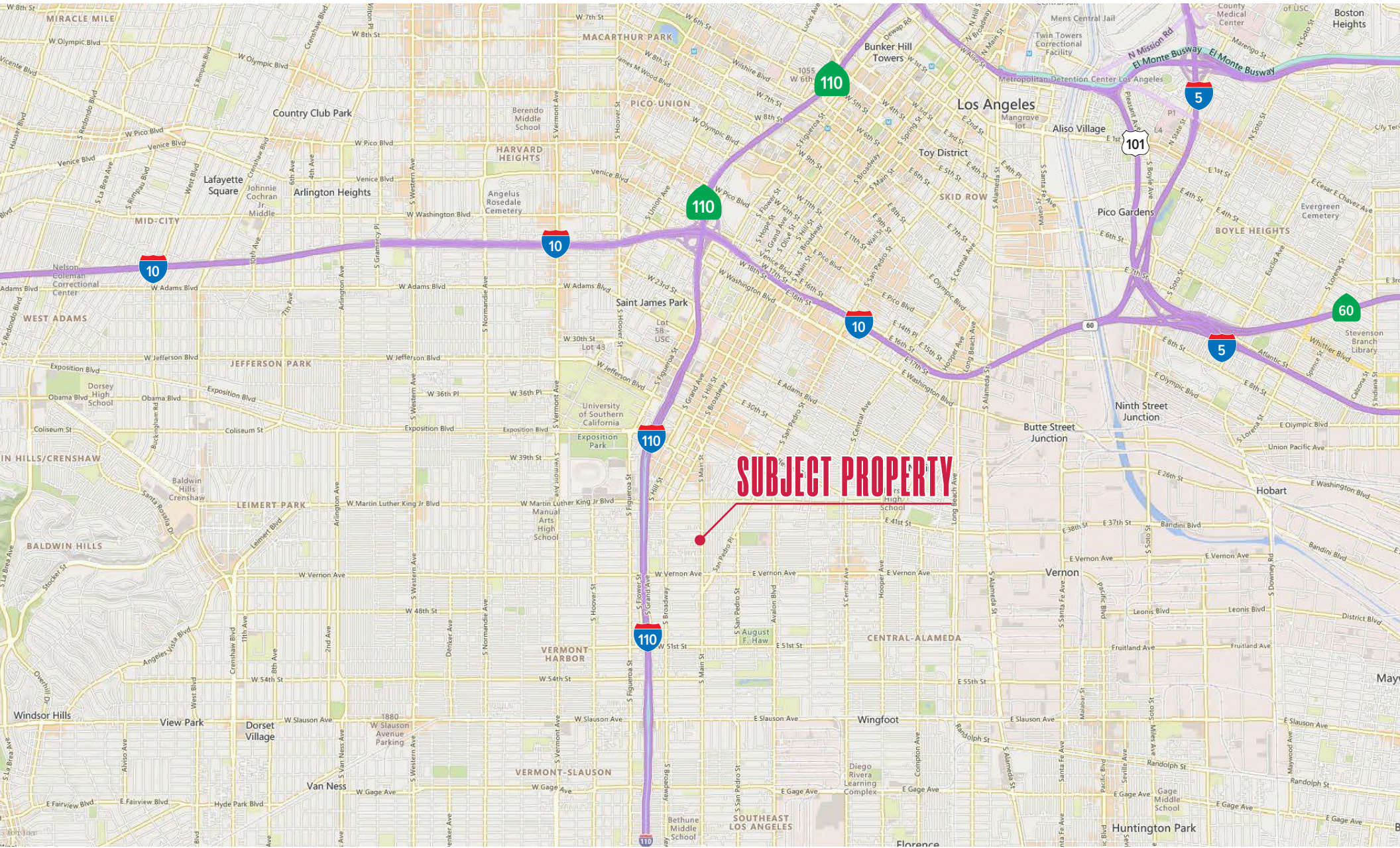


4157 - 4161 - 4163 S MAIN ST - PARCEL MAP





4157 - 4161 - 4163 S MAIN ST - LOCATION MAP





# 4157, 4161 & 4163 S MAIN ST

LOS ANGELES, CA 90037

FOR MORE INFORMATION, PLEASE CONTACT:

**JIM HALFERTY**

Principal | LIC ID 01212024

**323.767.2113**

[jhalferty@lee-associates.com](mailto:jhalferty@lee-associates.com)