

Industrial ★ LEASE

LanCarte.com

2051 FRANKLIN DR, FORT WORTH, TX 76106



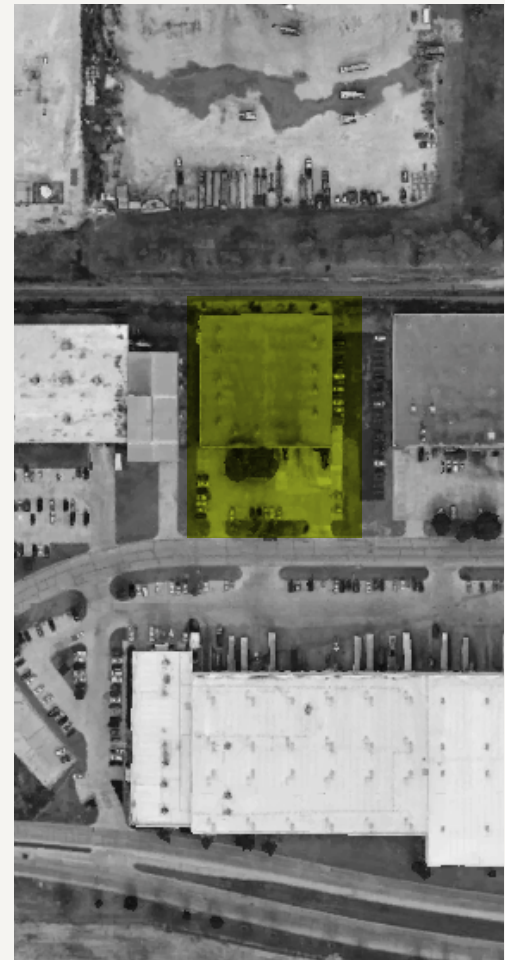
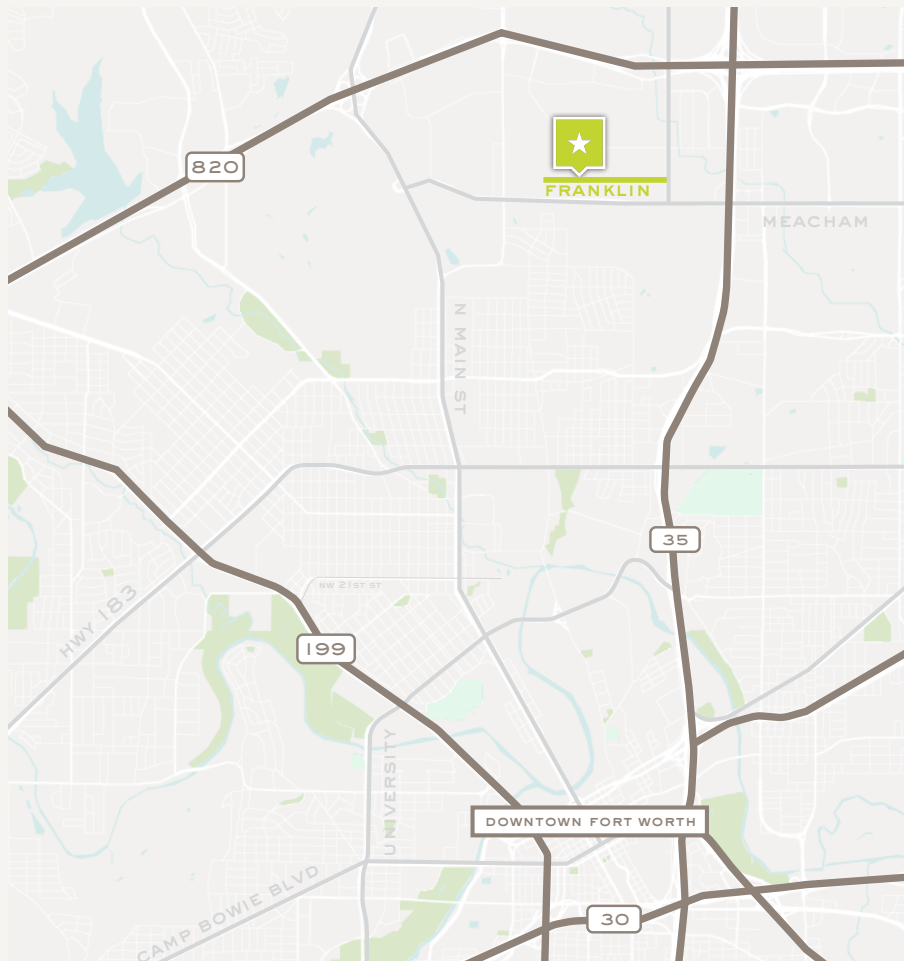
Benjamin Brown
817-676-5858
bbrown@lancarte.com

Benson Williams
817-999-7033
bwilliams@lancarte.com

Industrial ★ SALE

2051 FRANKLIN DRIVE

LanCarte.com



PROPERTY FEATURES

- Available April 1, 2026
- Located just north of Meacham Blvd., in the Mark IV Industrial Park with easy access to both I-35W and NE Loop 820
- 34,874 square foot building
- +/- 4,500 SF office space (+/- 2,500 SF mezzanine office)
- Large warehouse breakroom
- 480V Power, 800 amps
- 1.832 acres
- 20' clear height
- 9 dock doors and 1 grade level door
- +/- 15,000 SF HVAC warehouse
- +/- 15,000 SF hot warehouse
- Zoned "K" Heavy Industrial
- 62 surface parking spaces

LOCATION OVERVIEW

Located in a prime Fort Worth industrial corridor, 2051 Franklin Drive offers an excellent leasing opportunity for businesses seeking convenient access to major highways and distribution routes. This property provides ample warehouse space, functional layouts for logistics or light manufacturing, and easy truck access. Its strategic location supports efficient operations while keeping your business connected to the DFW metroplex and beyond.

LEASE RATE

CONTACT BROKER

Industrial ★ SALE
2051 FRANKLIN DRIVE

LanCarte.com



Industrial ★ SALE
2051 FRANKLIN DRIVE

LanCarte.com





LANCARTE

COMMERCIAL

BROKERAGE ★ PROPERTY MANAGEMENT

Relentlessly Pursuing What Matters

Nick Talley
817-907-0327
ntalley@lancarte.com

Benson Williams
318-458-2318
bwilliams@lancarte.com

The information provided herein was obtained from sources believed to be reliable. However, LanCarte Commercial makes no guaranties, warranties or representations as to the completeness or accuracy thereof. The presentation of this property is submitted subject to errors, omissions, change of price or conditions, prior to sale or lease, or withdrawal without notice. Copyright 2026 LanCarte Commercial Real Estate, LLC.