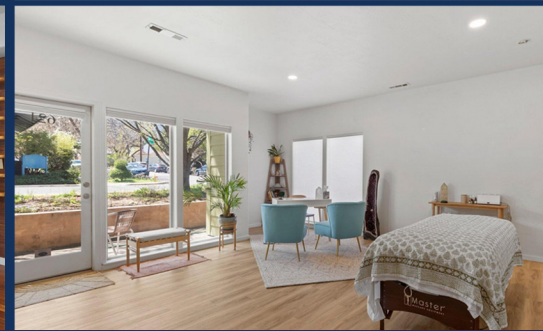
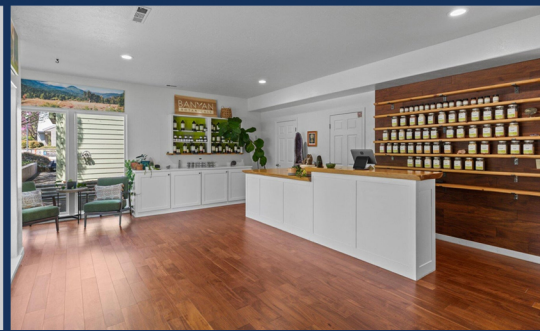




**MILLEN
PROPERTY GROUP**
REAL ESTATE BROKERS

**621, 625, 629 A STREET
ASHLAND, OREGON**



OFFERED FOR \$1,595,000

5 UNITS	COMMERCIAL
5,518 SQ. FT	LIVE/WORK
YEAR: 1994	.19 ACRE LOT



Prime location for this attractive 1994 built commercial building generating \$7,500 monthly income. E-1 zoned with street level Commercial/Retail and 2nd floor residential. Beautiful remodel with 3 units built around a welcoming central courtyard. The 2 end units are identical with street level commercial space, half bath and storage, plus upper-level studios with open living/bedroom, kitchen & full bath. The larger middle unit is artistic, open with soaring ceilings, smooth lines, beautiful fireplace, gorgeous light, separate office, full bath, kitchen and attached two car garage. Upper level features a bright living/dining area, partial kitchen, multiple rooms, full bath, laundry facilities, and a large deck with beautiful mountain views. Large fenced rear yard. 4 recently paved parking spaces. Great property, loads of options for a variety of uses. End units may be perfect work live units. Check with City. Operate your business in a prime location in the heart of the Railroad District.

**PATIE MILLEN
PRINCIPAL BROKER/OWNER**

Patie@AshlandOregon.com
AshlandOregon.com

545 A STREET, SUITE 2
ASHLAND, OR 97520

541-301-3435