

# COMMONS V

MEDICAL OFFICE BUILDING

800 GOODLETTE RD NORTH  
NAPLES, FL 34102

Premier Medical Office Space for Lease



5220 Summerlin Commons Blvd., Suite 500 Fort Myers, Florida 33907

COMMERCIAL  
PROPERTY  
SOUTHWEST FLORIDA

Building owned and managed by  
**HEALTHCARE REALTY**

**GARY TASMAN**  
CEO & Principal Broker  
+1 239 489 3600  
gtasman@cpswfl.com

**VANESSA TYLER**  
Associate Director  
+1 239 489 3600  
vtyler@cpswfl.com



# Opportunity

- Three-story medical office building totaling 60,008 RSF
- Located in one of the fastest growing coastal communities in Southwest Florida
- One mile from Naples Community Hospital-Downtown, a 420-bed hospital specializing in cardiology, oncology, surgery, diagnostics, and more
- Referral opportunities from other providers
- Drive up patient pick-up and drop off
- Ample parking
- Non-compete in place, no physical therapy use

## Drive-Time From Property

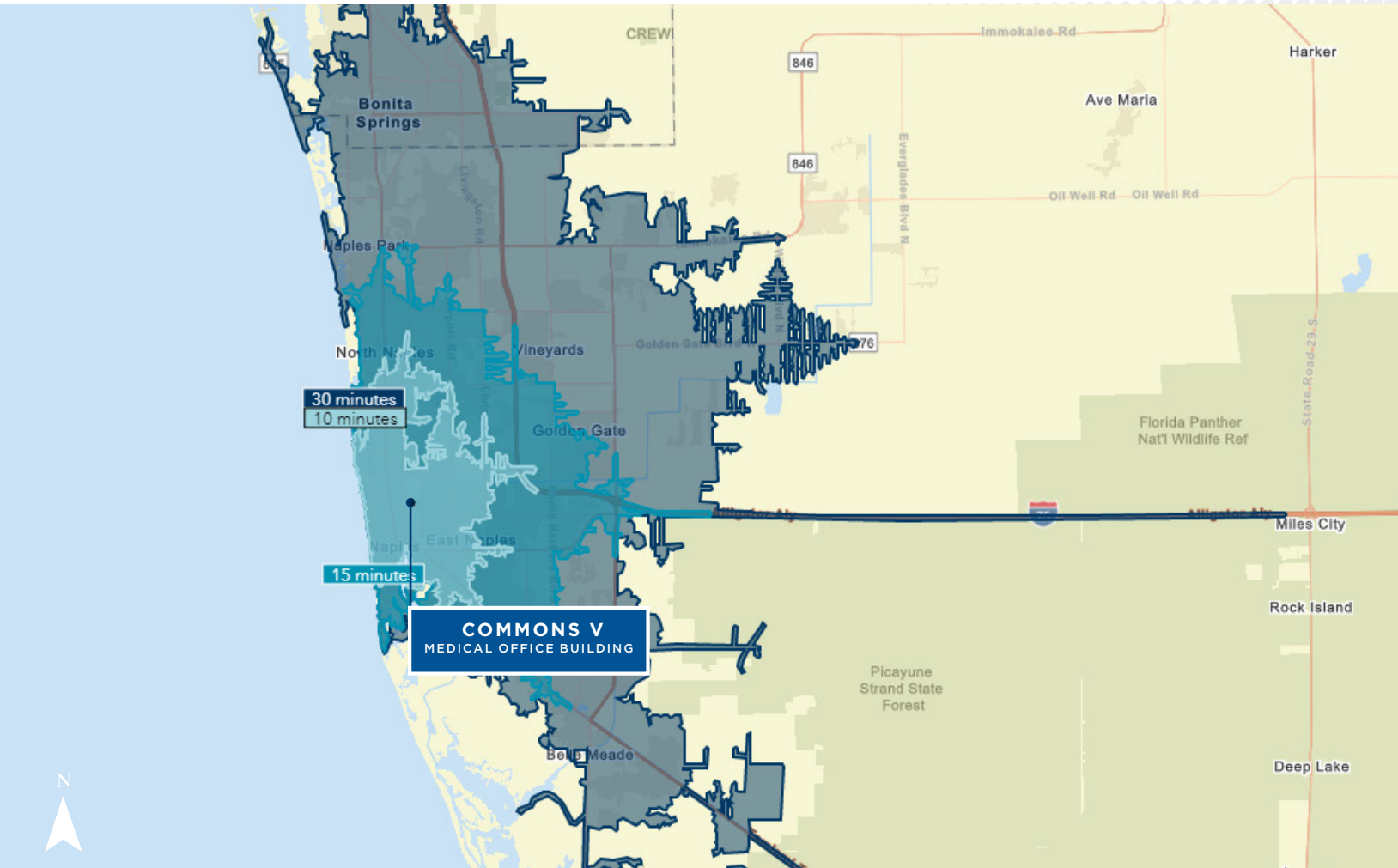
**SUITE SIZE**

# 298-4,042 SF

---

**DEMOGRAPHICS**

	1 MILE	3 MILES	5 MILES
<b>2023 TOTAL POPULATION</b>	3,470	42,711	109,476
<b>2023 MEDIAN AGE</b>	49.2 Yrs	57 Yrs	56.6 Yrs
<b>2023 AVERAGE HOUSEHOLD INCOME</b>	\$100,447	\$112,592	\$107,231
<b>2023 AVERAGE MEDICAL SPENDING</b>	\$1,598	\$1,884	\$1,861



**CUSHMAN & WAKEFIELD**  
 COMMERCIAL PROPERTY  
 SOUTHWEST FLORIDA  
 5220 Summerlin Commons Blvd., Suite 500 Fort Myers, Florida 33907

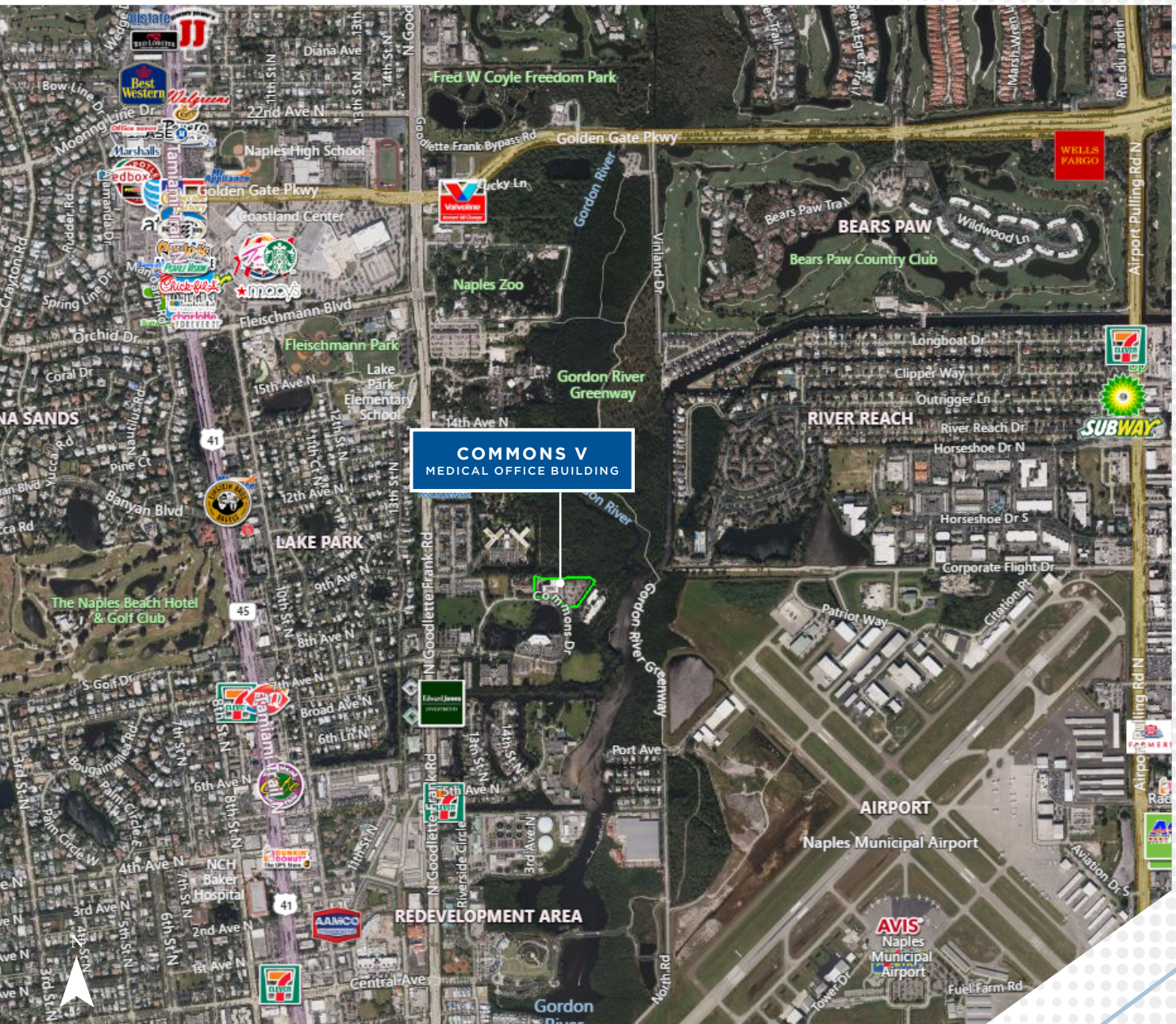
Building owned and managed by  
**HEALTHCARE REALTY**

**GARY TASMAN**  
 CEO & Principal Broker  
 +1 239 489 3600  
 gtasman@cpswfl.com

**VANESSA TYLER**  
 Associate Director  
 +1 239 489 3600  
 vtyler@cpswfl.com



# Nearby Amenities




**CUSHMAN & WAKEFIELD**  
 COMMERCIAL PROPERTY  
 SOUTHWEST FLORIDA  
 5220 Summerlin Commons Blvd., Suite 500 Fort Myers, Florida 33907  
 Building owned and managed by  
**HEALTHCARE REALTY**

**GARY TASMAN**  
 CEO & Principal Broker  
 +1 239 489 3600  
 gtasman@cpswfl.com

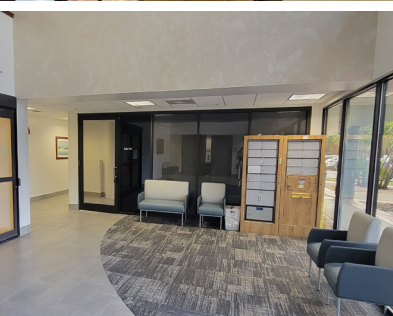
**VANESSA TYLER**  
 Associate Director  
 +1 239 489 3600  
 vtyler@cpswfl.com



# COMMONS V

## MEDICAL OFFICE BUILDING

## Nearby Medical



## Premier Medical Office Space for Lease

**GARY TASMAN**  
CEO & Principal Broker  
+1 239 489 3600  
gtasman@cpswfl.com

**VANESSA TYLER**  
Associate Director  
+1 239 489 3600  
vtyler@cpswfl.com

800 GOODLETTE RD NORTH  
NAPLES, FL 34102



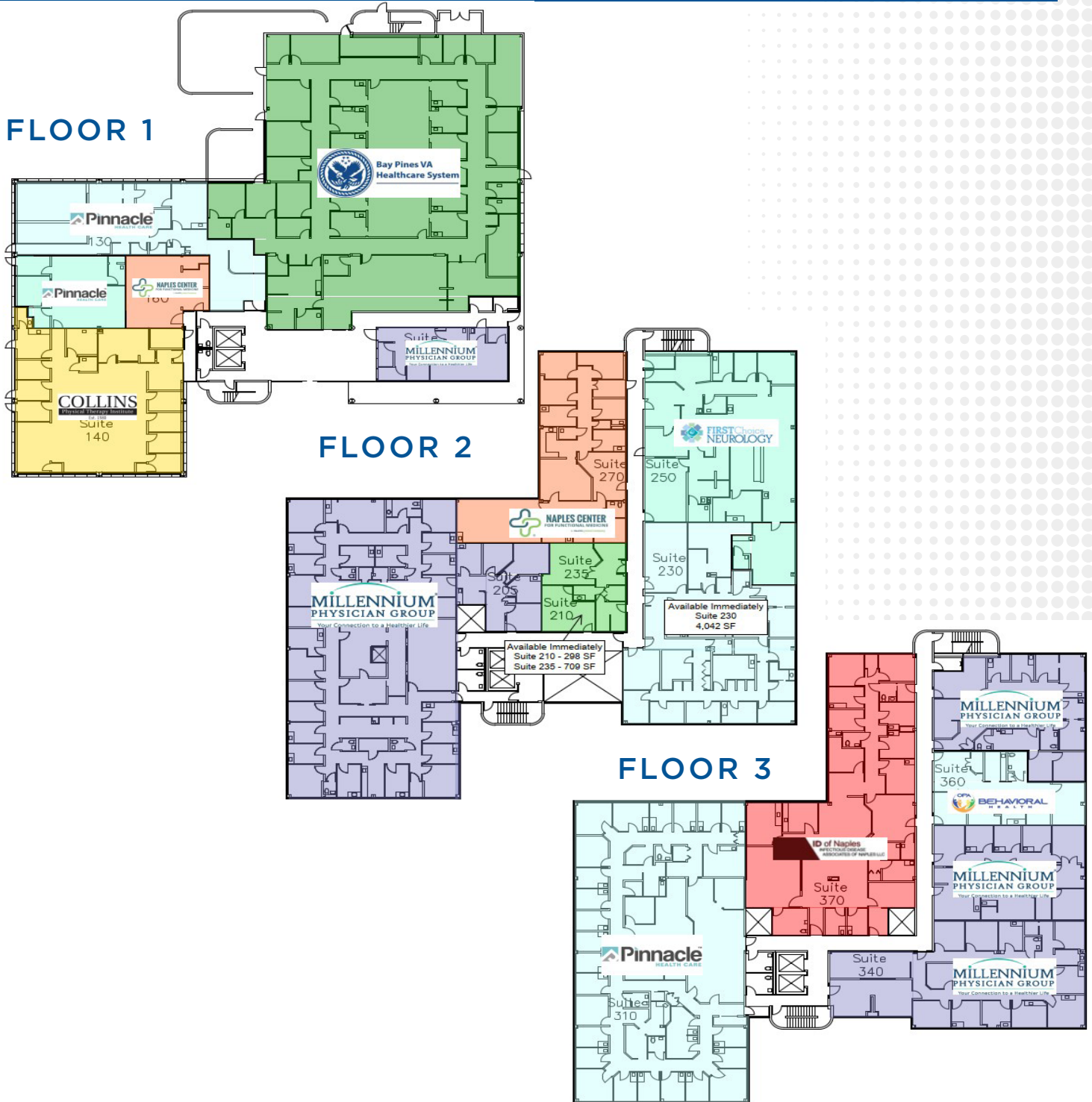
Building owned and managed by  
**HEALTHCARE REALTY**

# COMMONS V

## MEDICAL OFFICE BUILDING

800 GOODLETTE RD NORTH  
NAPLES, FL 34102

Available Suites 298-4,042 SF



**CUSHMAN & WAKEFIELD**  
COMMERCIAL PROPERTY  
SOUTHWEST FLORIDA  
5220 Summerlin Commons Blvd., Suite 500 Fort Myers, Florida 33907  
Building owned and managed by  
**HEALTHCARE REALTY**

**GARY TASMAN**  
CEP & Principal Broker  
+1 239 489 3600  
gtasman@cpswfl.com

**VANESSA TYLER**  
Associate Director  
+1 239 489 3600  
vtyler@cpswfl.com



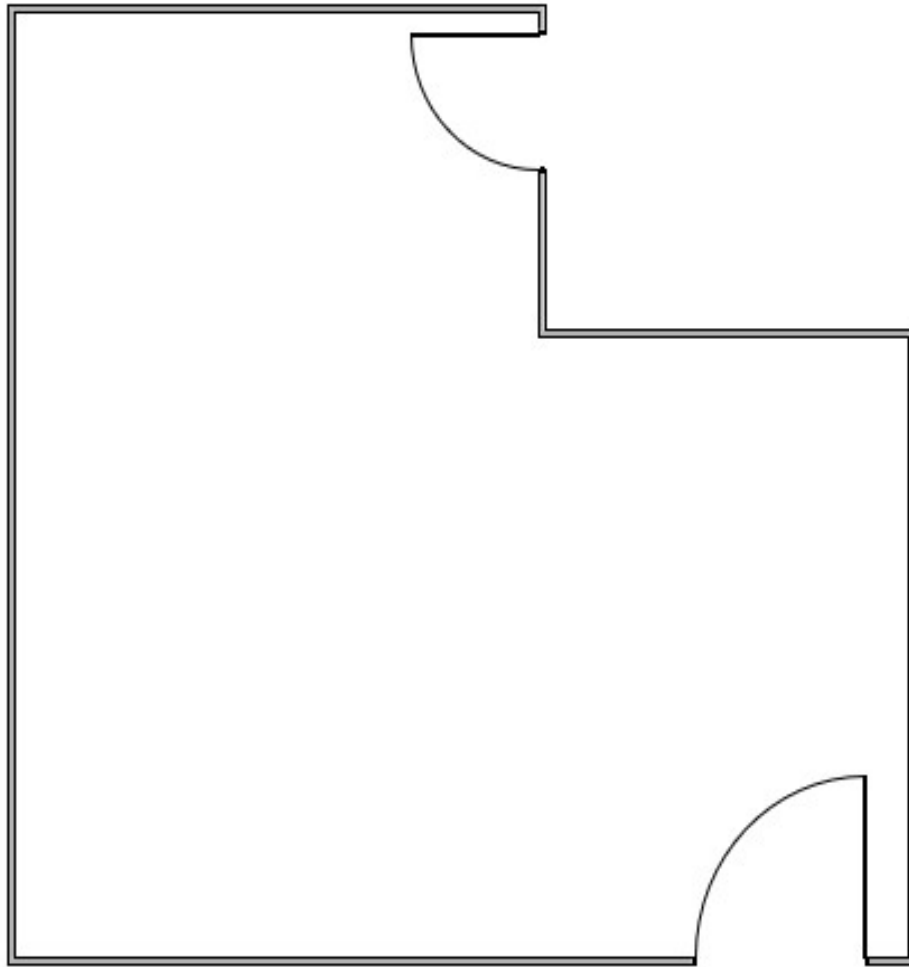
# COMMONS V

MEDICAL OFFICE BUILDING

800 GOODLETTE RD NORTH  
NAPLES, FL 34102

Suite 210 | 298 SF - Available Immediately

Lease Rate - \$21.00  
CAM - \$13.25



 **CUSHMAN & WAKEFIELD**  
5220 Summerlin Commons Blvd., Suite 500 Fort Myers, Florida 33907  
COMMERCIAL PROPERTY  
SOUTHWEST FLORIDA  
Building owned and managed by  
**HEALTHCARE REALTY**

**GARY TASMAN**  
CEP & Principal Broker  
+1 239 489 3600  
gtasman@cpswfl.com

**VANESSA TYLER**  
Associate Director  
+1 239 489 3600  
vtyler@cpswfl.com

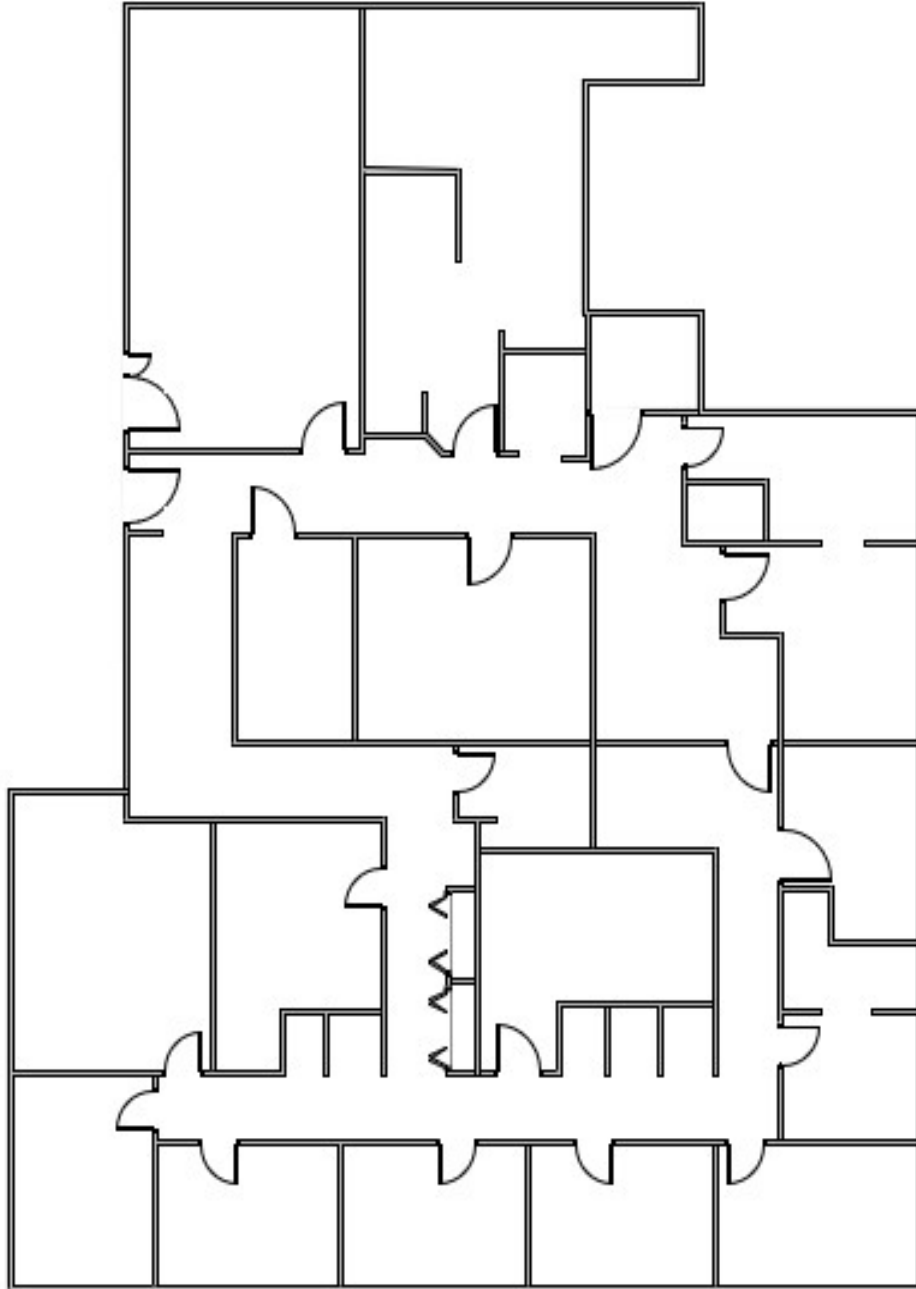
# COMMONS V

MEDICAL OFFICE BUILDING

800 GOODLETTE RD NORTH  
NAPLES, FL 34102

Suite 230 | 4,042 SF - Available Immediately

Lease Rate - \$21.00  
CAM - \$13.25



 **CUSHMAN & WAKEFIELD**  
5220 Summerlin Commons Blvd., Suite 500 Fort Myers, Florida 33907

COMMERCIAL  
PROPERTY  
SOUTHWEST FLORIDA

Building owned and managed by  
**HEALTHCARE REALTY**

**GARY TASMAN**  
CEP & Principal Broker  
+1 239 489 3600  
gtasman@cpswfl.com

**VANESSA TYLER**  
Associate Director  
+1 239 489 3600  
vtyler@cpswfl.com

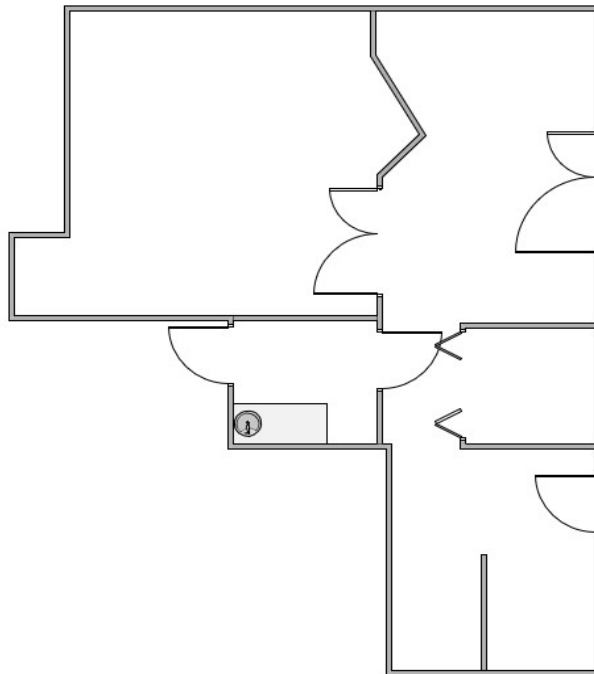
# COMMONS V

MEDICAL OFFICE BUILDING

800 GOODLETTE RD NORTH  
NAPLES, FL 34102

Suite 235 | 709 SF - Available Immediately

Lease Rate - \$21.00  
CAM - \$13.25



 **CUSHMAN & WAKEFIELD**  
5220 Summerlin Commons Blvd., Suite 500 Fort Myers, Florida 33907

**COMMERCIAL  
PROPERTY  
SOUTHWEST FLORIDA**

Building owned and managed by  
**HEALTHCARE REALTY**

**GARY TASMAN**  
CEP & Principal Broker  
+1 239 489 3600  
gtasman@cpswfl.com

**VANESSA TYLER**  
Associate Director  
+1 239 489 3600  
vtyler@cpswfl.com