

# 1633 BAYSHORE

BURLINGAME, CA

WWW.1633BAYSHORE.COM

OFFICE SUITES AVAILABLE NOW

±1,233 - 3,635 RSF

**Wyatt Thompson**

Associate  
+1 650 320 0209  
wyatt.thompson@cushwake.com  
LIC #02253133

**Andrew Hsu**

Associate  
+1 650 686 7138  
andrew.hsu@cushwake.com  
LIC #02089731

**Karen Chin**

Director  
+1 650 401 2132  
karen.chin@cushwake.com  
LIC #01036169



**CUSHMAN &  
WAKEFIELD**

# 1633 BAYSHORE

BURLINGAME, CA

DOWNTOWN  
BURLINGAME

## PROPERTY HIGHLIGHTS

- Recently Renovated Lobbies
- New Elevator Cabs
- On-Site Fitness Center with Showers and Lockers
- Community Kitchen and Mail Room
- On Site Property Management
- Immediate Access to Highway 101
- Walking Distance to Hotels
- 2 Miles from SFO
- Centrally Located to San Francisco, East Bay, Peninsula, and Silicon Valley
- Minutes to Millbrae CalTrain/Bart Station and Downtown Burlingame
- Close Distance to Restaurants and Amenities
- Direct Access to Waterfront Jogging Trails
- Ample Parking

**Wyatt Thompson**

Associate  
+1 650 320 0209  
wyatt.thompson@cushwake.com  
LIC #02253133

**Andrew Hsu**

Associate  
+1 650 686 7138  
andrew.hsu@cushwake.com  
LIC #02089731

**Karen Chin**

Director  
+1 650 401 2132  
karen.chin@cushwake.com  
LIC #01036169

# 1633 BAYSHORE

BURLINGAME, CA

SUITE #

SF

NOTES

SUITE 332

±1,233 SF

1 Private Office, 2 Conference Rooms,  
Server Room



SUITE 232

±3,635 SF

3 Private Offices, 2 Conference Rooms, 1 Kitchenette  
*Divisible to approximately 1,818 SF*



**Wyatt Thompson**

Associate  
+1 650 320 0209  
wyatt.thompson@cushwake.com  
LIC #02253133

**Andrew Hsu**

Associate  
+1 650 686 7138  
andrew.hsu@cushwake.com  
LIC #02089731

**Karen Chin**

Director  
+1 650 401 2132  
karen.chin@cushwake.com  
LIC #01036169

# 1633 BAYSHORE

BURLINGAME, CA

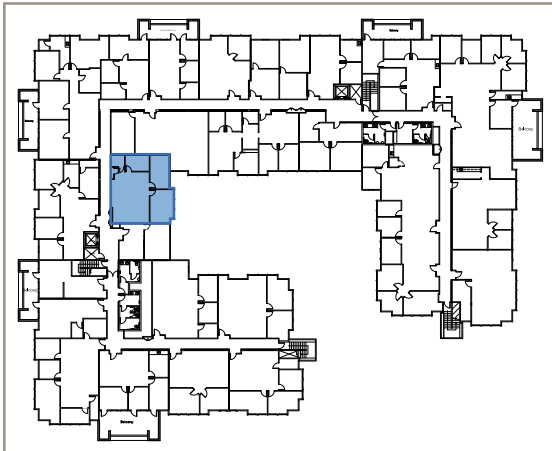
## AVAILABLE SUITES

SUITE 332

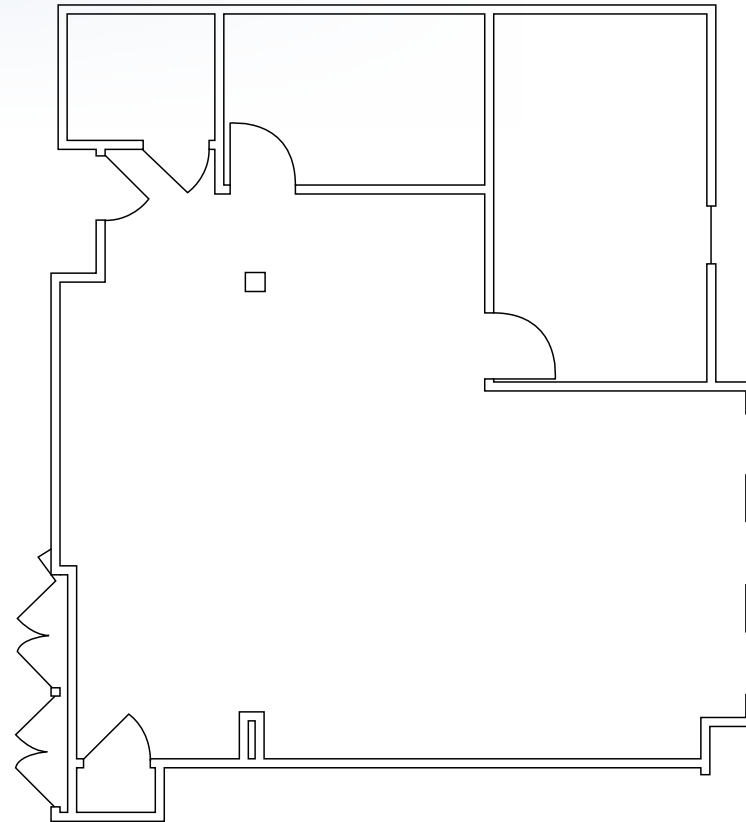
±1,233 SF

- 1 Private Office
- 2 Conference Rooms
- Server Room

360° VIRTUAL TOUR



----- BAYSHORE HWY -----



**Wyatt Thompson**

Associate  
+1 650 320 0209  
wyatt.thompson@cushwake.com  
LIC #02253133

**Andrew Hsu**

Associate  
+1 650 686 7138  
andrew.hsu@cushwake.com  
LIC #02089731

**Karen Chin**

Director  
+1 650 401 2132  
karen.chin@cushwake.com  
LIC #01036169

# 1633 BAYSHORE

BURLINGAME, CA

## AVAILABLE SUITES

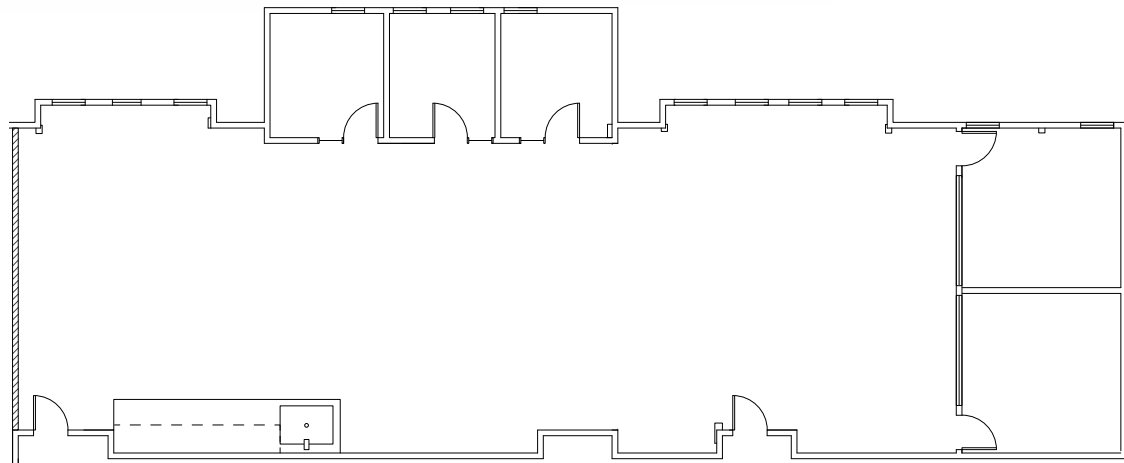
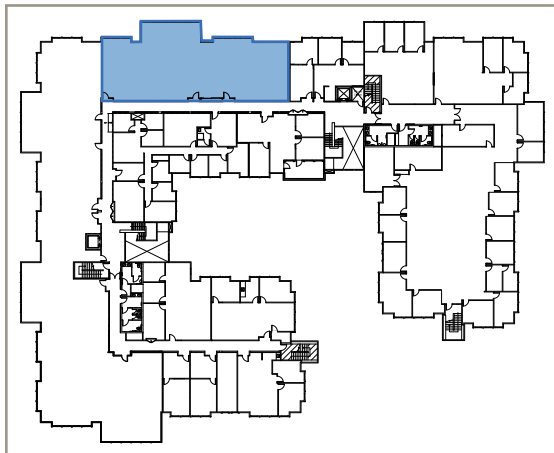
SUITE 232

±3,635 SF

- 3 Private Offices
- 2 Conference Rooms
- 1 Kitchenette

*Divisible to approximately 1,818 SF*

360° VIRTUAL TOUR



--- BAYSHORE HWY ---

**Wyatt Thompson**

Associate  
+1 650 320 0209  
wyatt.thompson@cushwake.com  
LIC #02253133

**Andrew Hsu**

Associate  
+1 650 686 7138  
andrew.hsu@cushwake.com  
LIC #02089731

**Karen Chin**

Director  
+1 650 401 2132  
karen.chin@cushwake.com  
LIC #01036169

# 1633 BAYSHORE

BURLINGAME, CA

# TRANSPORTATION

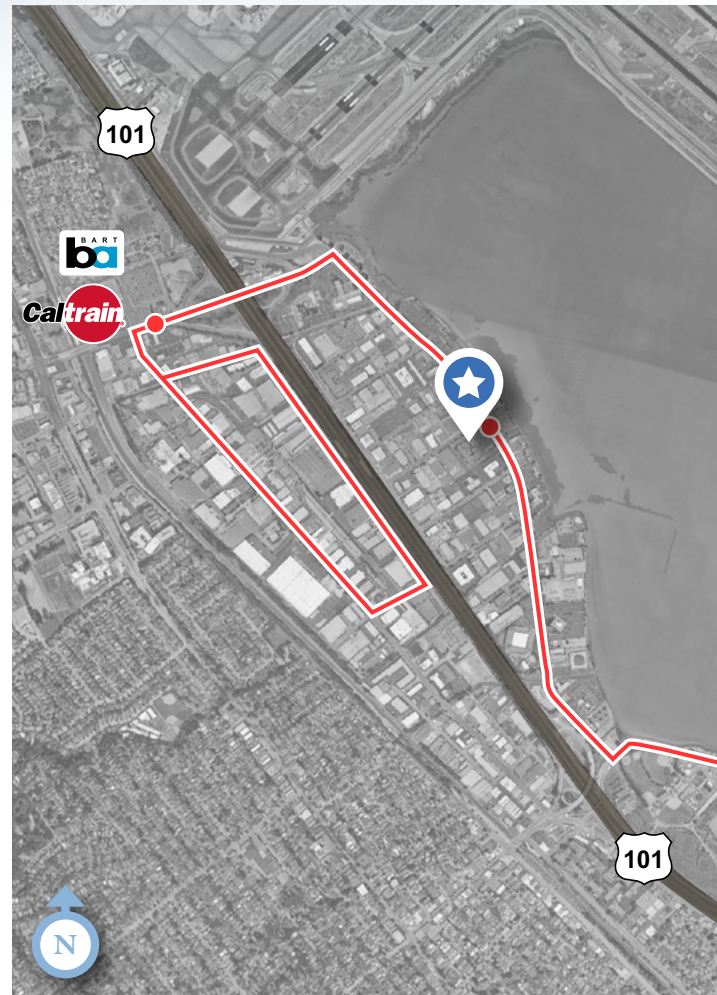
## CALTRAIN/BART SHUTTLE A.M.

Millbrae Station Pick-Up	1633 Old Bayshore Drop-Off
6:57 AM	7:10 AM
7:27 AM	7:40 AM
7:42 AM	7:55 AM
8:09 AM	8:22 AM
8:27 AM	8:40 AM
8:42 AM	8:55 AM
8:59 AM	9:12 AM
9:14 AM	9:27 AM

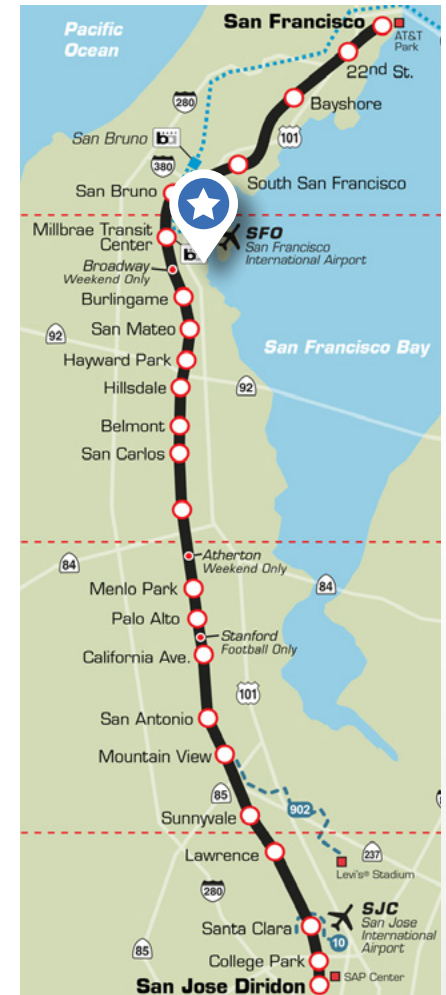
## CALTRAIN/BART SHUTTLE P.M.

1633 Old Bayshore Pick-Up	Millbrae Station Drop-Off
4:05 PM	4:19 PM
4:25 PM	4:39 PM
4:37 PM	4:51 PM
5:00 PM	5:14 PM
5:24 PM	5:38 PM
5:38 PM	5:52 PM
6:09 PM	6:23 PM
6:26 PM	6:40 PM
6:41 PM	6:55 PM

## SHUTTLE ROUTE



## CALTRAIN ROUTE



**Wyatt Thompson**  
Associate  
+1 650 320 0209  
wyatt.thompson@cushwake.com  
LIC #02253133

**Andrew Hsu**  
Associate  
+1 650 686 7138  
andrew.hsu@cushwake.com  
LIC #02089731

**Karen Chin**  
Director  
+1 650 401 2132  
karen.chin@cushwake.com  
LIC #01036169

# 1633 BAYSHORE

BURLINGAME, CA

## AMENITIES



1	New England Lobster Market	9	Max's Restaurant
2	Flights 101 Club Lounge	10	Starbucks Burlingame
2	Starbucks	11	Village Host Pizzeria
3	HL Peninsula Garden	12	Maverick Jack's
4	HL Peninsula Pearl	13	Top Golf
5	Mr. Teriyaki	14	Tap & Tavern
6	Benihana Burlingame	15	Gigi's Café
7	Grand Harbor Seafood	16	Kincaid's Restaurant
8	3Sixty	17	Fire Vine Grill & Bar

# 1633 BAYSHORE

BURLINGAME, CA

## PHOTOS



**Wyatt Thompson**  
Associate  
+1 650 320 0209  
wyatt.thompson@cushwake.com  
LIC #02253133

**Andrew Hsu**  
Associate  
+1 650 686 7138  
andrew.hsu@cushwake.com  
LIC #02089731

**Karen Chin**  
Director  
+1 650 401 2132  
karen.chin@cushwake.com  
LIC #01036169

# 1633 BAYSHORE

BURLINGAME, CA

WWW.1633BAYSHORE.COM