

Land For Sale

1018-1050 W 20th Street
Eudora, KS

74.55 acres of development
land for sale

Property Specifications

- Located just south of the K-10 corridor in
- Eudora, KS
- Less than 5 minutes to Lawrence & DeSoto
- 20 minutes to Olathe & Lenexa
- 6 miles to Panasonic battery plant
- Less than 1 mile from recently built Eudora
- Middle & High School
- List Price: \$2,400,000



Jim Gates, SIOR
jim.gates@jll.com
+1 913 469 4638

Location Details

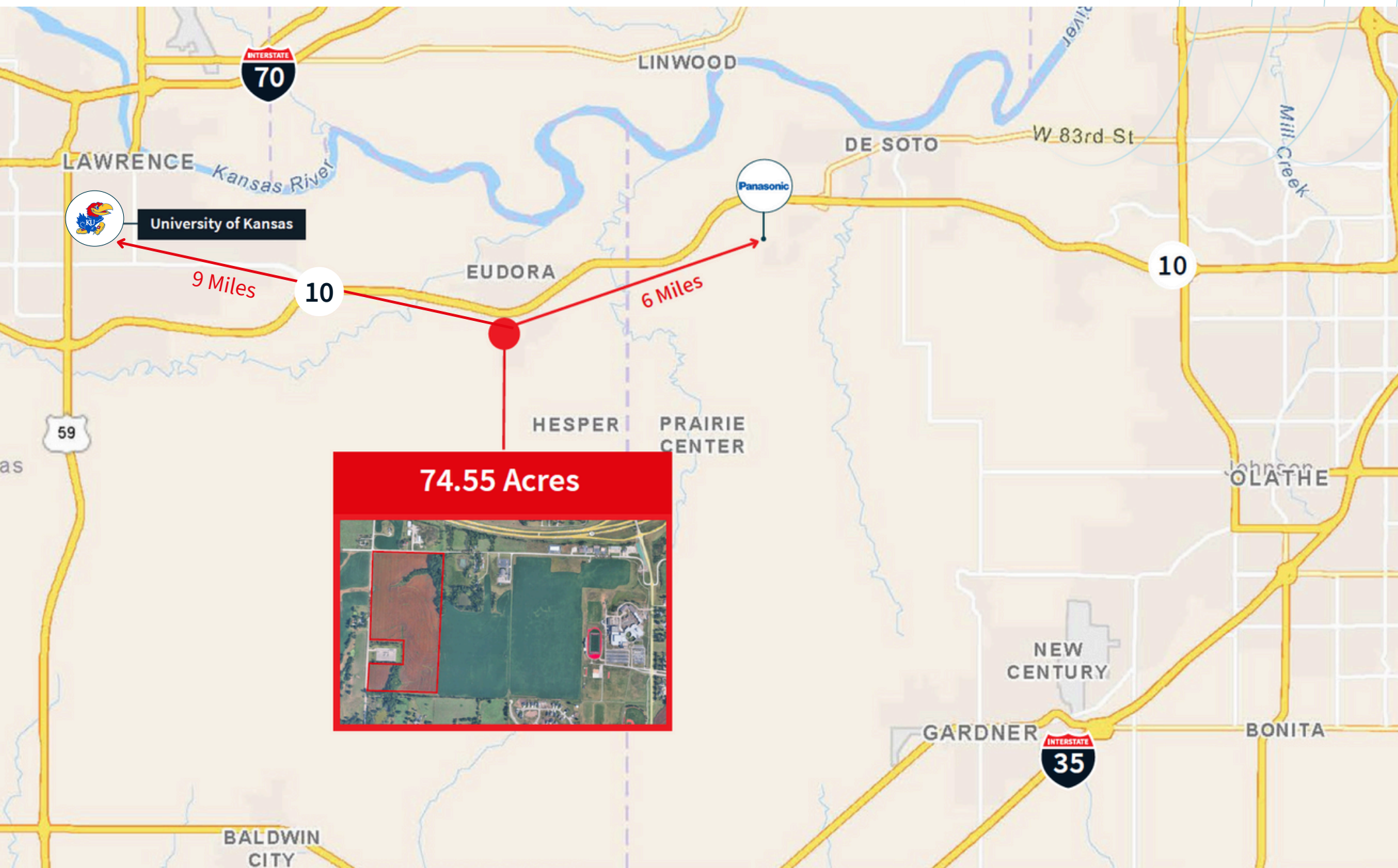
The 74.55 acres of developmental land is located within a Reinvestment Housing Incentive District (RHID) <https://www.kansascommerce.gov/program/community-programs/rhid/>

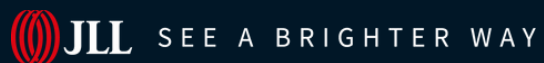
RHID is a program designed to aid developers in building housing within communities by assisting in the financing of public infrastructure improvements. RHID captures the incremental increase in real property taxes created by a housing development project for up to 25 years. The revenue can be used for reimbursement for incurred costs or to pay debt service on bonds.

For more information on the city of Eudora visit www.cityofeudoraks.gov



Location Overview Map





Jim Gates, SIOR

Executive Vice President

jim.gates@jll.com

913 469 4638

jll.com/kansas-city

Jones Lang LaSalle Brokerage, Inc. a Licensed Real Estate Broker

Although information has been obtained from sources deemed reliable, neither Owner nor JLL makes any guarantees, warranties or representations, express or implied, as to the completeness or accuracy as to the information contained herein. Any projections, opinions, assumptions or estimates used are for example only. There may be differences between projected and actual results, and those differences may be material. The Property may be withdrawn without notice. Neither Owner nor JLL accepts any liability for any loss or damage suffered by any party resulting from reliance on this information. If the recipient of this information has signed a confidentiality agreement regarding this matter, this information is subject to the terms of that agreement. ©2024. Jones Lang LaSalle IP, Inc. All rights reserved.