



Shop • Work • Thrive

in the HEART of DOWNTOWN GREENVILLE



CAMPERDOWN

355 S Main St, Greenville, SC 29601

CBRE

Camperdown Falls Tower

Office Space for Lease

Overlooking Greenville's iconic Fall's Park and adjacent to the celebrated Peace Center in the heart of downtown, the Camperdown development has elevated Greenville's Main Street experience to new heights.



CAMPERDOWN



CBRE

355 S Main St, Greenville, SC 29601

Interior Space

Office Space for Lease

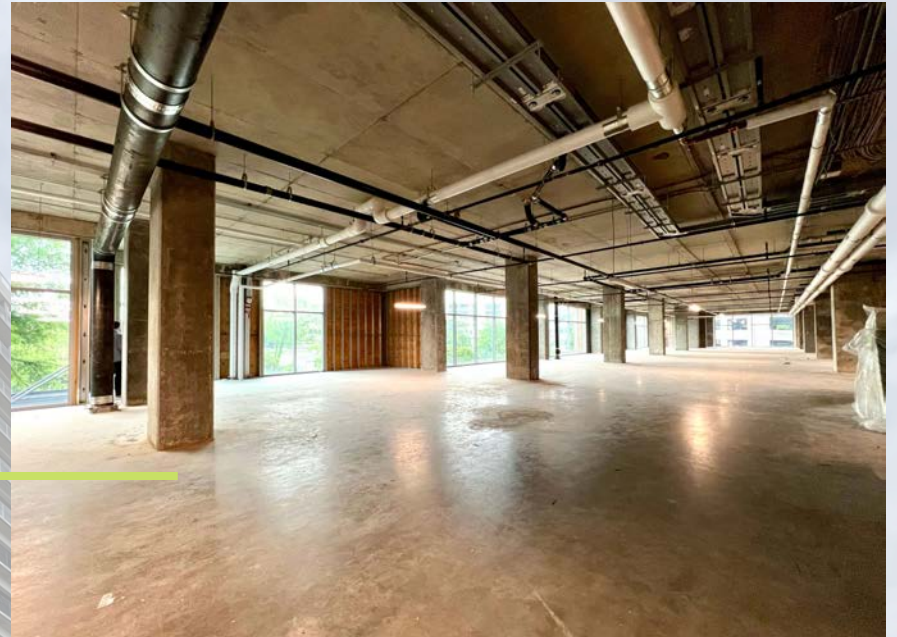
P1 / ±17,823 RSF

P2 / ±10,175 RSF

Lease Rate:
\$18.00/RSF NNN



CAMPERDOWN



355 S Main St, Greenville, SC 29601

CBRE

Available Space

P1 / ±17,823 RSF

P2 / ±10,175 RSF

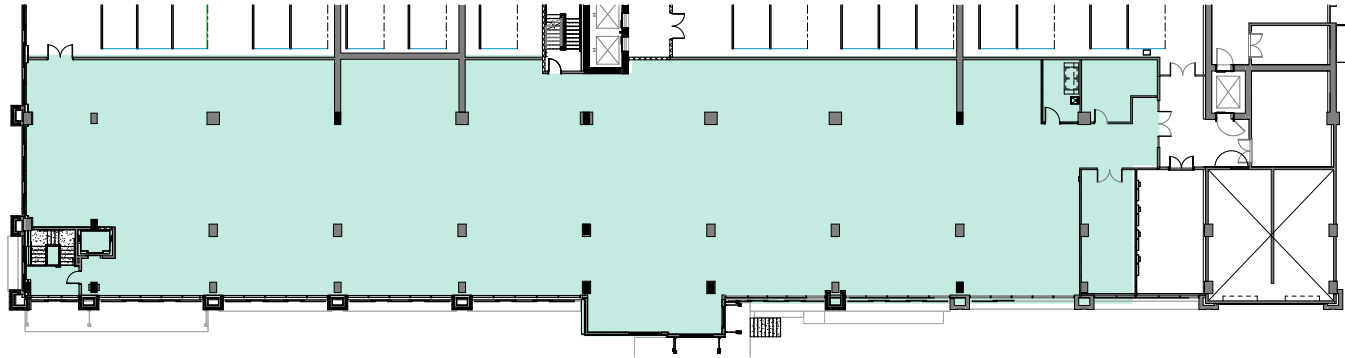
Falls Street
Entrance

355 S Main St, Greenville, SC 29601

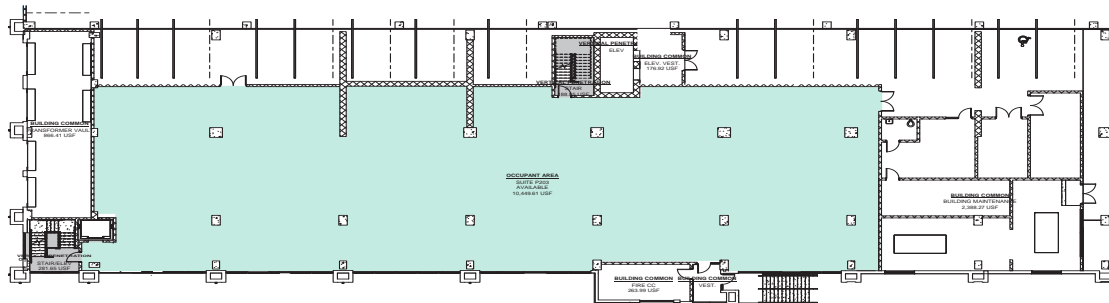
CBRE

Floor Plans

P1 / ±17,823 RSF



P2 / ±10,175 RSF



355 S Main St, Greenville, SC 29601

CBRE

Aerial

PALOMA

Juniper

AC
HOTELS
MARRIOTT

Carmella's
CAFE & DESSERT BAR

Greenville News
PART OF THE USA TODAY NETWORK

LARKIN'S

CAMP
MODERN AMERICAN EATERY



Perfect
Buns
BURGERS, DRINKS, HANDHELDS



jen's

SOUTHERN
TIDE

GROUP
Therapy
PUB & PLAYGROUND

SPACES.



Falls St

S Main St

355 S Main St, Greenville, SC 29601

CBRE

Trade Aerial



355 S Main St (Site)

Hotels

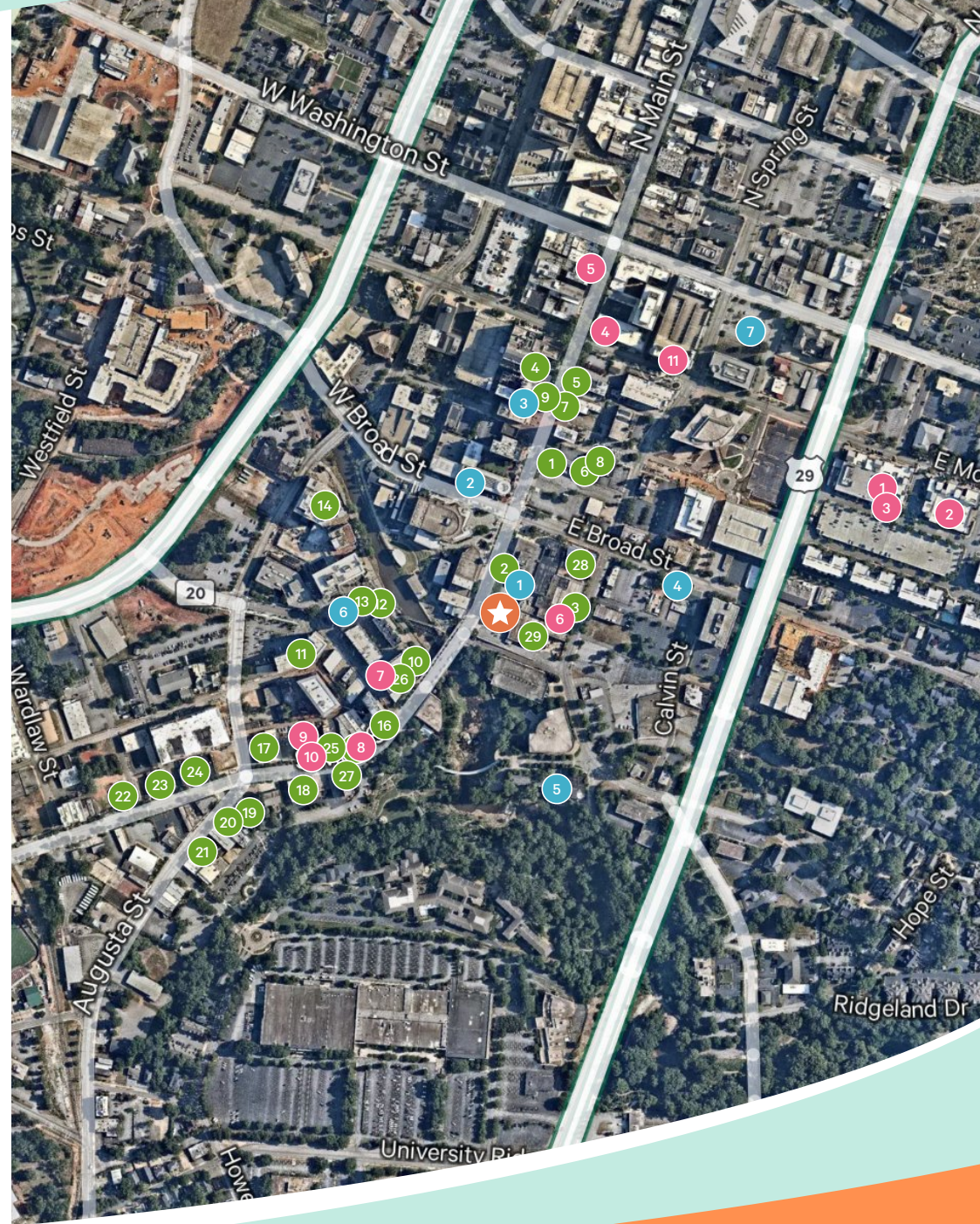
- 1 AC Hotel by Marriott Greenville
- 2 Courtyard by Marriott Greenville Downtown
- 3 The Westin Poinsett
- 4 Hyatt Place Greenville Downtown
- 5 Grand Bohemian Lodge Greenville
- 6 Hampton Inn & Suites Greenville-Downtown
- 7 SpringHill Suites by Marriott Greenville Downtown

Shopping

- 1 Publix Super Market at McBee Station
- 2 Staples
- 3 The Shops at McBee Station
- 4 CVS
- 5 River Street Sweets
- 6 Southern Tide Signature Store
- 7 Truphae - Fountain Pens
- 8 Beija-Flor Jeans Flagship Store
- 9 Cox Leather
- 10 Samantha Grace Designs
- 11 Cosmic Rabbits Tea Company

Restaurants

- 1 Soby's
- 2 Juniper - Greenville
- 3 Starbucks
- 4 Maestro bistro and dinner club
- 5 Carolina Ale House
- 6 The Jones Oyster Co.
- 7 Luna Rosa Gelato Cafe
- 8 Connolly's Irish Pub
- 9 Spoonbread
- 10 Halls Chophouse Greenville
- 11 Konnichiwa of Greenville
- 12 Papi's Tacos
- 13 The Lazy Goat
- 14 Ruth's Chris Steak House
- 15 Pomegranate on Main
- 16 Jianna
- 17 Flying Biscuit Cafe
- 18 Marble Slab Creamery
- 19 Smoke On the Water
- 20 Mellow Mushroom Greenville
- 21 Eggs Up Grill
- 22 Otto Izakaya Downtown
- 23 Sabor Latin Street Grill
- 24 Old Europe Coffee and Desserts
- 25 Le Petit Croissant
- 26 Starbucks
- 27 Foxcroft Wine Co. Greenville
- 28 Larkin's
- 29 Group Therapy Pub & Playground



355 S Main St, Greenville, SC 29601

CBRE

Greenville, South Carolina

NAMED ONE OF
THE TOP EIGHT
PLACES TO GO IN
THE SOUTHEAST
Fondor's 2022
Go List

RANKED 5TH
ON THE LIST OF
"AMERICA'S BEST
SMALL
CITIES"
Conde Nast
Traveler 2021

BEST BEER
CITIES IN THE US
Thrillist 2020

THE SOUTH'S
BEST CITIES ON
THE RISE 2021
Southern Living 2021

THE SOUTH'S
MOST "TASTEFUL"
SMALL TOWNS
Forbes 2020

RANKED
NO. 20
OF 50 BEST PLACES
TO TRAVEL IN THE
WORLD
Travel & Leisure 2022

355 S Main St, Greenville, SC 29601

CBRE

Contact Us

Charles Gouch, CCIM, SIOR
Senior Vice President
+1 864 527 6035
charles.gouch@cbre.com

Blaine Hart, SIOR
Senior Vice President
+1 864 527 6054
blaine.hart@cbre.com

Shelby Dodson, LEED AP
Senior Vice President
+1 864 527 6022
shelby.dodson@cbre.com

© 2025 CBRE, Inc. All rights reserved. This information has been obtained from sources believed reliable, but has not been verified for accuracy or completeness. You should conduct a careful, independent investigation of the property and verify all information. Any reliance on this information is solely at your own risk. CBRE and the CBRE logo are service marks of CBRE, Inc. All other marks displayed on this document are the property of their respective owners, and the use of such logos does not imply any affiliation with or endorsement of CBRE. Prior to including any photos in any materials, you must first make sure that CBRE has the right to use such photos from the copyright owner, and determine whether our marketing materials must include a credit to the copyright owner. SE_Operations 4-23



355 S Main St, Greenville, SC 29601

CBRE