

**PREMIUM
LOCATION**

FOR LEASE 2607A Wigwam DR, Stockton, CA



The information contained herein is deemed reliable but is not guaranteed. To discuss this property or any other commercial need, please contact:

PMZ
SINCE 1967

COMMERCIAL
REAL ESTATE

ASIM SADAT
ASADAT@PMZ.COM
DRE #02222440
(510) 302-9602

DANNY PRICE
DPRICE@PMZ.COM
DRE #01895497
(209) 491-3415

PROPERTY SUMMARY

ADDRESS:	2607A WIGWAM DR, STOCKTON, CA	YEAR BUILT:	1982
LEASE RATE:	1.35 PSF	COUNTY:	SAN JOAQUIN
AVAILABLE SF:	+7000	PROPERTY TYPE:	OFFICE
BUILDING SF:	21,858	PARCEL NUMBER:	132-080-170-000
LOT SIZE:	40,946	PROCURING BROKER FEE:	2.5%

PROPERTY DESCRIPTION:

This two-story, 7,000+ square foot property is designed for productivity and convenience. Features include Private offices and open spaces for cubicle setups, two break rooms with mini kitchens, On-site gym and server room, pre-installed wiring for tech operations, natural lighting, plenty of parking, located in a safe area near the airport and Port of Stockton.



The information contained herein is deemed reliable but is not guaranteed. To discuss this property or any other commercial need, please contact:

**PREMIUM
LOCATION**

PHOTO GALLERY



The information contained herein is deemed reliable but is not guaranteed. To discuss this property or any other commercial need, please contact:

PMZ
SINCE 1967

COMMERCIAL
REAL ESTATE

ASIM SADAT
ASADAT@PMZ.COM
DRE #0222440
(510) 302-9602

DANNY PRICE
DPRICE@PMZ.COM
DRE #01895497
(209) 491-3415

**PREMIUM
LOCATION**

PHOTO GALLERY



The information contained herein is deemed reliable but is not guaranteed. To discuss this property or any other commercial need, please contact:

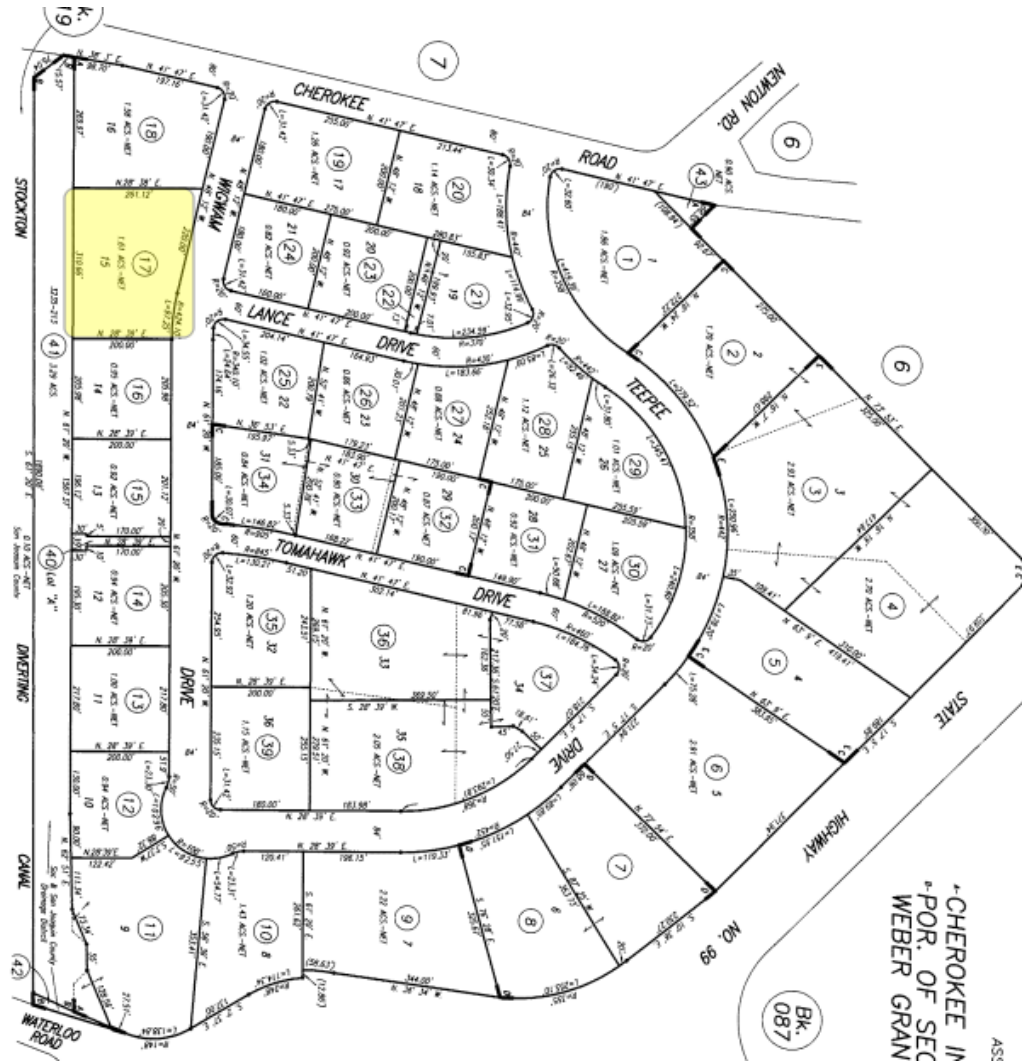
PMZ
SINCE 1967

COMMERCIAL
REAL ESTATE

ASIM SADAT
ASADAT@PMZ.COM
DRE #0222440
(510) 302-9602

DANNY PRICE
DPRICE@PMZ.COM
DRE #01895497
(209) 491-3415

PARCEL MAP



The information contained herein is deemed reliable but is not guaranteed. To discuss this property or any other commercial need, please contact:

PMZ
SINCE 1967

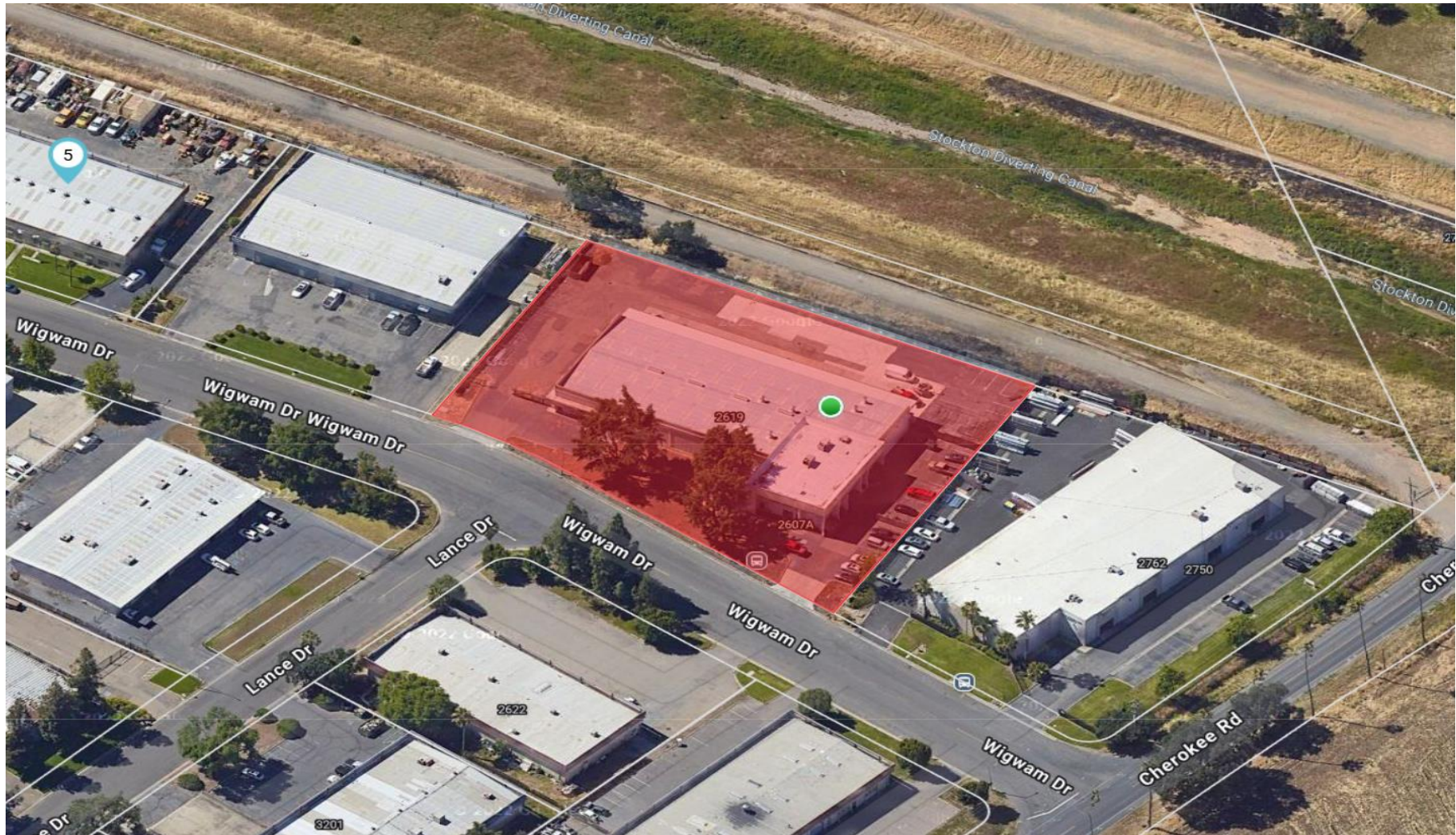
COMMERCIAL
REAL ESTATE

ASIM SADAT
ASADAT@PMZ.COM
DRE #0222440
(510) 302-9602

DANNY PRICE
DPRICE@PMZ.COM
DRE #01895497
(209) 491-3415

**PREMIUM
LOCATION**

AERIAL VIEW



The information contained herein is deemed reliable but is not guaranteed. To discuss this property or any other commercial need, please contact:

PMZ
SINCE 1967

COMMERCIAL
REAL ESTATE

ASIM SADAT
ASADAT@PMZ.COM
DRE #02222440
(510) 302-9602

DANNY PRICE
DPRICE@PMZ.COM
DRE #01895497
(209) 491-3415