

FOR LEASE

AT WEBER & RENWICK RD | ROMEOVILLE, IL

COMING SUMMER 2026 TO ROMEOVILLE, IL!

NOW LEASING!



**New Construction
Retail Center**

**High-Visibility
Busy Corner Location**

**Village Incentives Available
(Check with Village)**

PROPERTY HIGHLIGHTS

- **New construction** neighborhood retail center
- Located at the signalized corner of Weber Rd & Renwick Rd
- Extremely high-traffic area: **35,400 VPD** on Weber Rd, **10,300 VPD** on Renwick Rd
- Estimated building size: 11,254 SF
- 7 retail units
- Inline spaces approximately 1,440–1,525 SF
- Endcap spaces up to approximately 2,051 SF
- Attractive, modern facade with **prominent signage opportunities**
- Convenient on-site parking and multiple access points
- Patio shown on plan
- Seeking retail, service, restaurant, and complimentary neighborhood uses
- **Village Incentives Available for Certain Businesses**
(Check with Village)

AVAILABLE SPACES

Unit 1 — **1,888 SF**

Unit 2 — **1,440 SF**

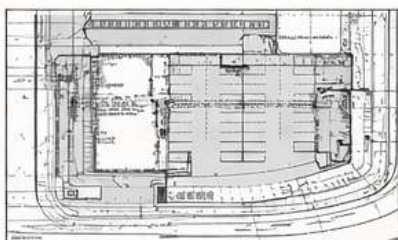
Unit 3 — **1,455 SF**

Unit 4 — **1,525 SF**

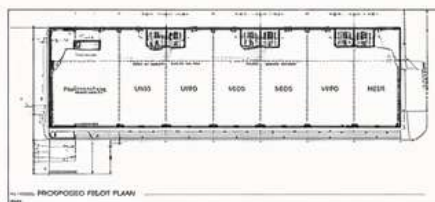
Unit 5 — **1,455 SF**

Unit 6 — **1,440 SF**

Unit 7 — **2,051 SF**



SITE PLAN



PROPOSED FIRST FLOOR PLAN

FOR LEASING INFORMATION

Ned Malley

📞 **708-296-1295**

✉️ **nedmalley@aol.com**