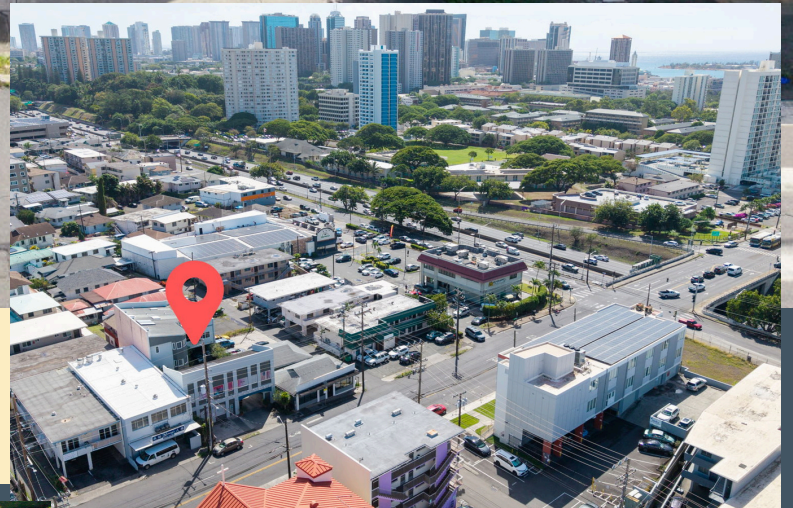


## Liliha Commercial Live/Work Opportunity

# 1631 Liliha Street

Honolulu, HI 96817



## PROPERTY SUMMARY

- ASKING PRICE: \$2,550,000
- TMK (1) 1-7-18 : 24
- TENURE: FEE SIMPLE
- PARKING: 9 STALLS
- ZONING: B-2
- PROP. TAX: \$1947/MO.
- BUILDING SIZE: 5,522 SF
- LAND SIZE: 5,700 SF

Learn more at  
[marcushawaii.com](http://marcushawaii.com)

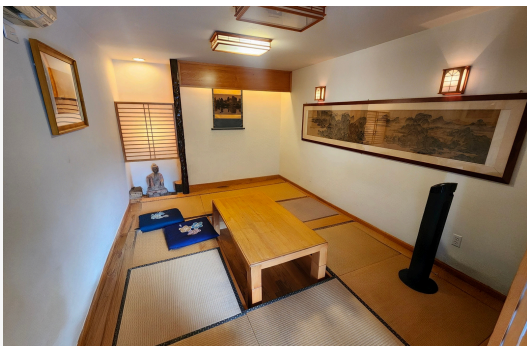
Seller & Seller's brokerage make no guarantees on any  
information contained herein.



1631 LILIHA STREET  
HONOLULU, HI 96817  
5,522 SF B-2 ZONED BUILDING  
FOR SALE - \$2,550,000



A well-maintained gem on Liliha built in 1997. Front bldg is a 2-story retail/office leased to 2 tenants. The rear bldg incl. 1st flr medical office + 2-story residential unit above w/separate entrance and boasts 3 large bdrm, 3.5 bath, tatami room + sun deck. Owner currently occupies but will vacate the rear building. 9 parking stalls. Prime location near Kuakini Medical Center with easy access to H-1 and downtown. See agent for restrictive covenant and set back info. Please call Listor for additional details and with any questions. Showings are by appointment only. DO NOT DISTURB TENANTS.



### Kevin Nishikawa

President | Partner - Commercial Division  
RB-17304

(808) 220-9220

kevin@marcushawaii.com



### Alexander C Yen

AVP | Commercial Division  
RA-81293

(808) 392-6475

alexandery@marcushawaii.com



[www.MarcusHawaii.com](http://www.MarcusHawaii.com)

Seller or Seller's brokerage makes no guarantees on any information contained herein.