



193 N. Outer Rd

Valley Park, MO 63088

Property Features

- 2.07 acres commercial land
- Zoned I-1 Light Industrial in the City of Valley Park
- Outside storage permitted
- Interstate visibility
- Located at I-44 & Hwy 141, minutes from I-270

Sale Price:

\$700,000.00

For more information:

Bill Barnes

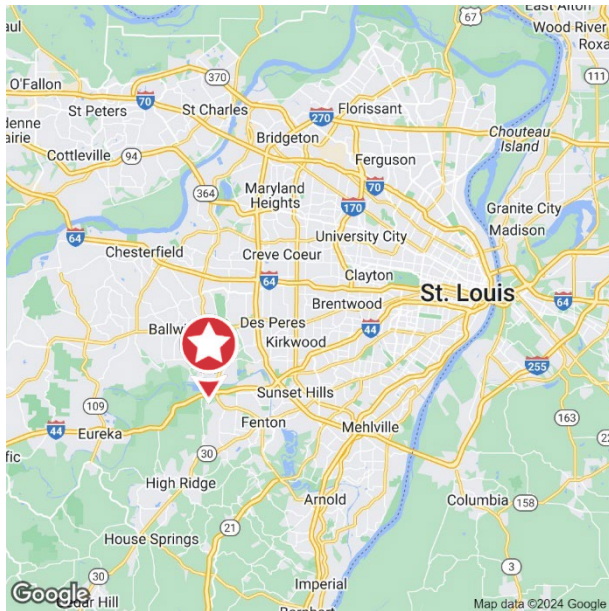
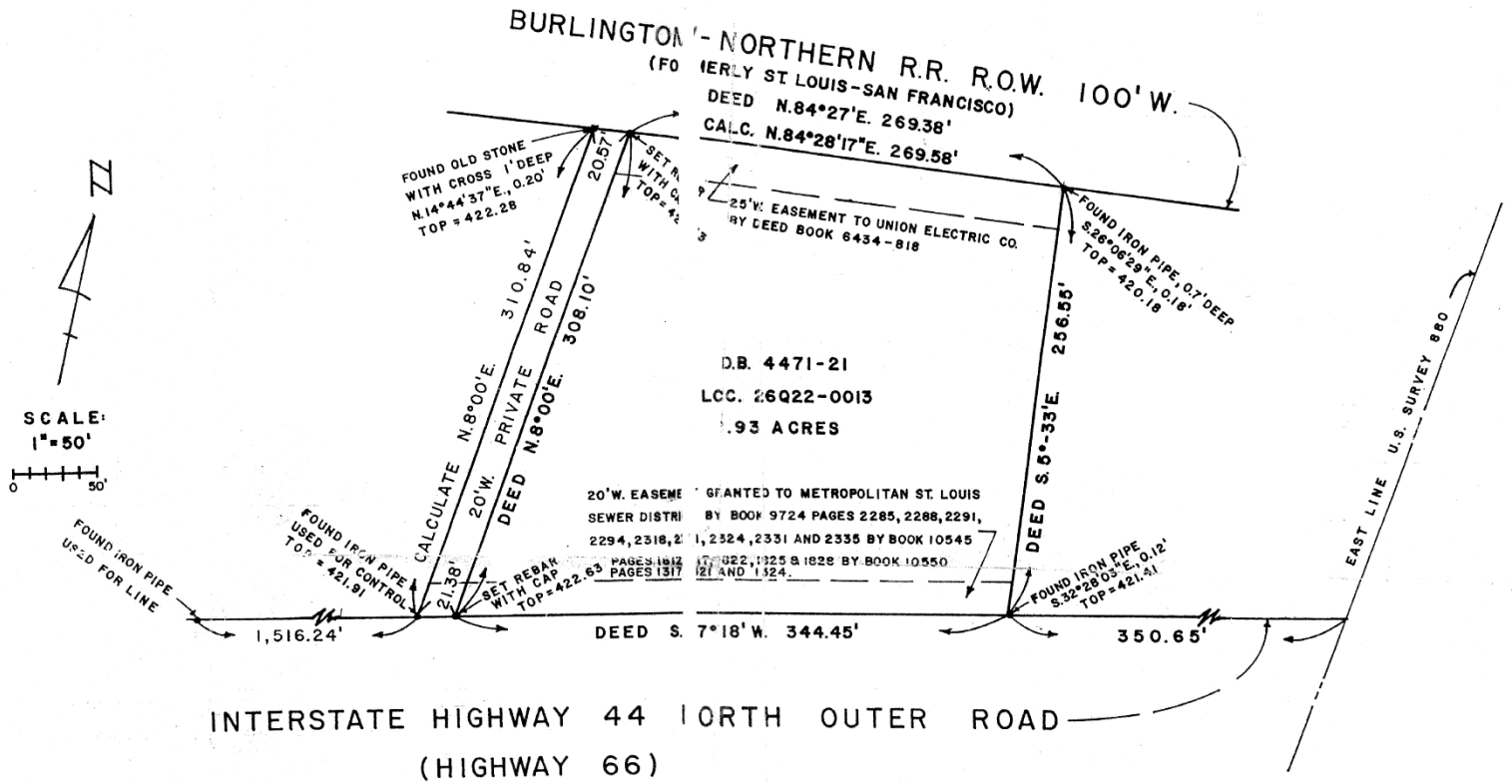
314 994 4401 Direct • 314 578 1708 Mobile
wbarnes@naidesco.com

Dan Hayes

314 994 4068 Direct • 314 401 4944 Mobile
dhayes@naidesco.com

Survey

193 N. Outer Rd
Valley Park, MO 63088



For more information:

Bill Barnes

314 994 4401 Direct • 314 578 1708 Mobile
wbarnes@naidesco.com

Dan Hayes

314 994 4068 Direct • 314 401 4944 Mobile
dhayes@naidesco.com



8112 Maryland Ave,
Suite 300
St. Louis, MO 63105
314 994 4800
naidesco.com