

742 – 1,517 SF Office Suites - Stamford Downtown

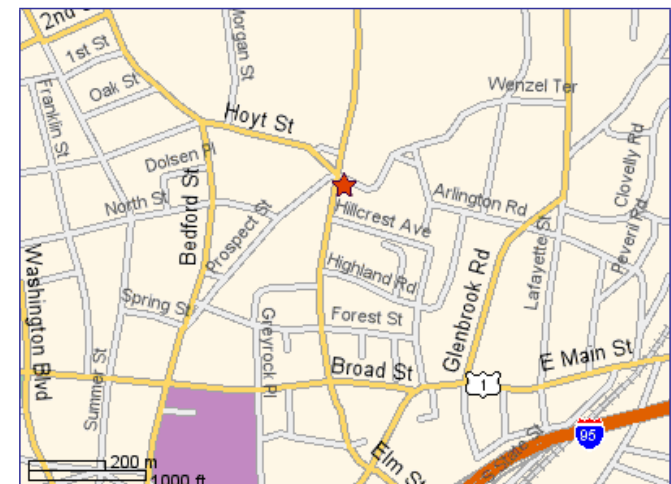
5 Hillandale Avenue, Stamford CT



Specifications

- Location:** Walk to Superior Courthouse and downtown. Very close to Exit 7 of I-95. At intersection of Grove, Strawberry, Prospect and Hoyt Streets.
- Price:**
- 1st Floor, 1,517SF @ \$22/SF MG, plus util.
 - 2nd Floor, 930 SF @ \$22/SF MG, plus util.
 - 2nd Floor, 742SF @ \$22/SF MG, plus util.
- Term:** 3-5 years
- Comments:** Ideal for attorney or other professional services use. 2.5/1,000 parking.

Map



Contact Exclusive Agent:

Andrew Paul

Chris Mailler

Mobile 914-924-3824 • 203-391-6801 • Andrew@pyramidregroup.com

Mobile 203-984-1822 • 203-391-6817 • Chris@pyramidregroup.com

Pyramid Real Estate Group

20 Summer Street, Stamford, CT 06901

(203) 348-8566 • Fax (203) 872-9023

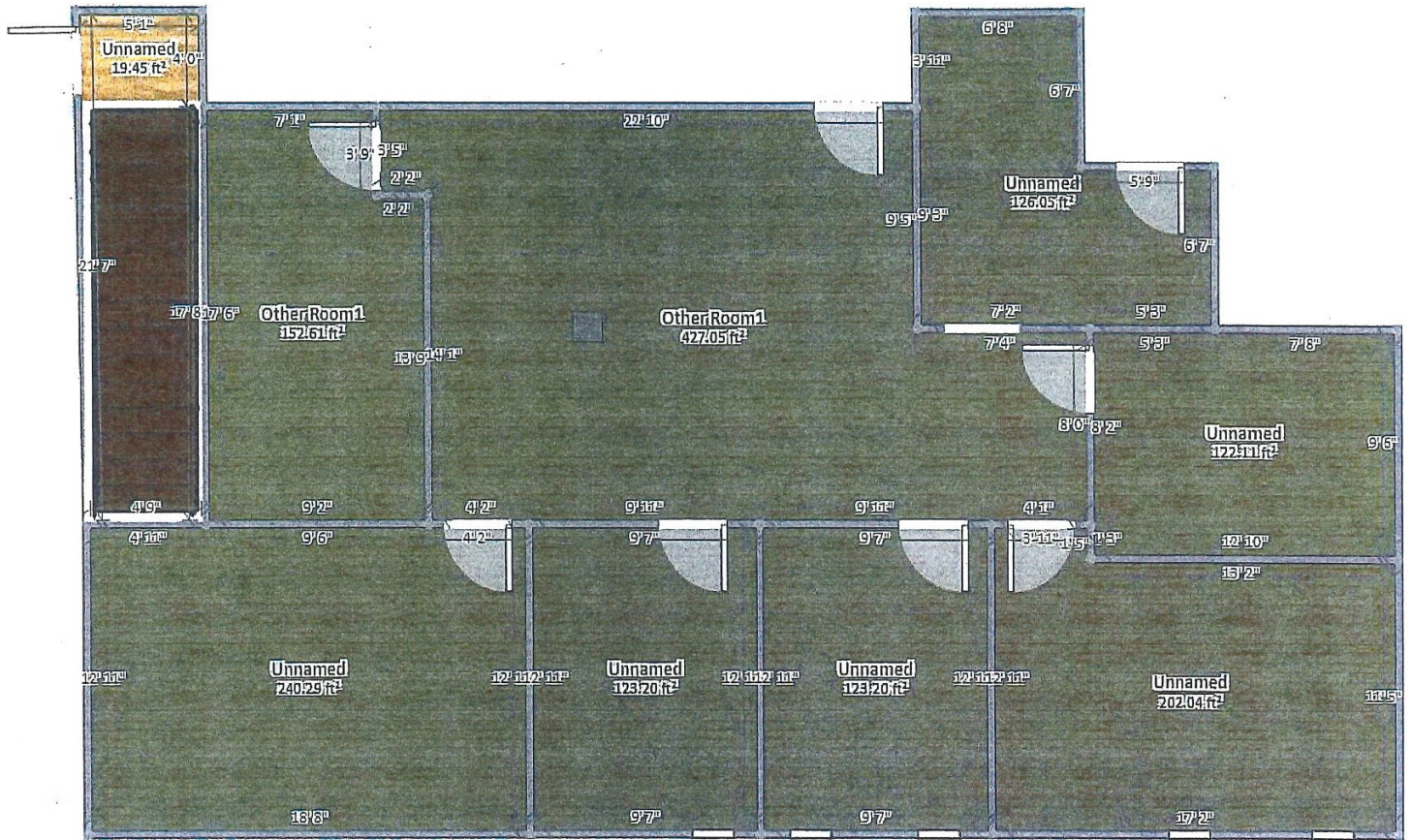
2002 PREM, Inc. The information above has been obtained from sources believed reliable. While we do not doubt its accuracy, we have not verified it and make no guarantee, warranty or representation about it. It is your responsibility to independently confirm its accuracy and completeness. Any projections, opinions, assumptions or estimates used are for example only and do not represent the current or future performance of the property. The value of this transaction to you depends on tax and other factors which should be evaluated by your tax, financial and legal advisors. You and your advisors should conduct a careful, independent investigation of the property to determine to your satisfaction the suitability of the property for your needs.

PYRAMID
Real Estate Group

Brokerage • Consulting • Management Services • Construction

www.pyramidregroup.com

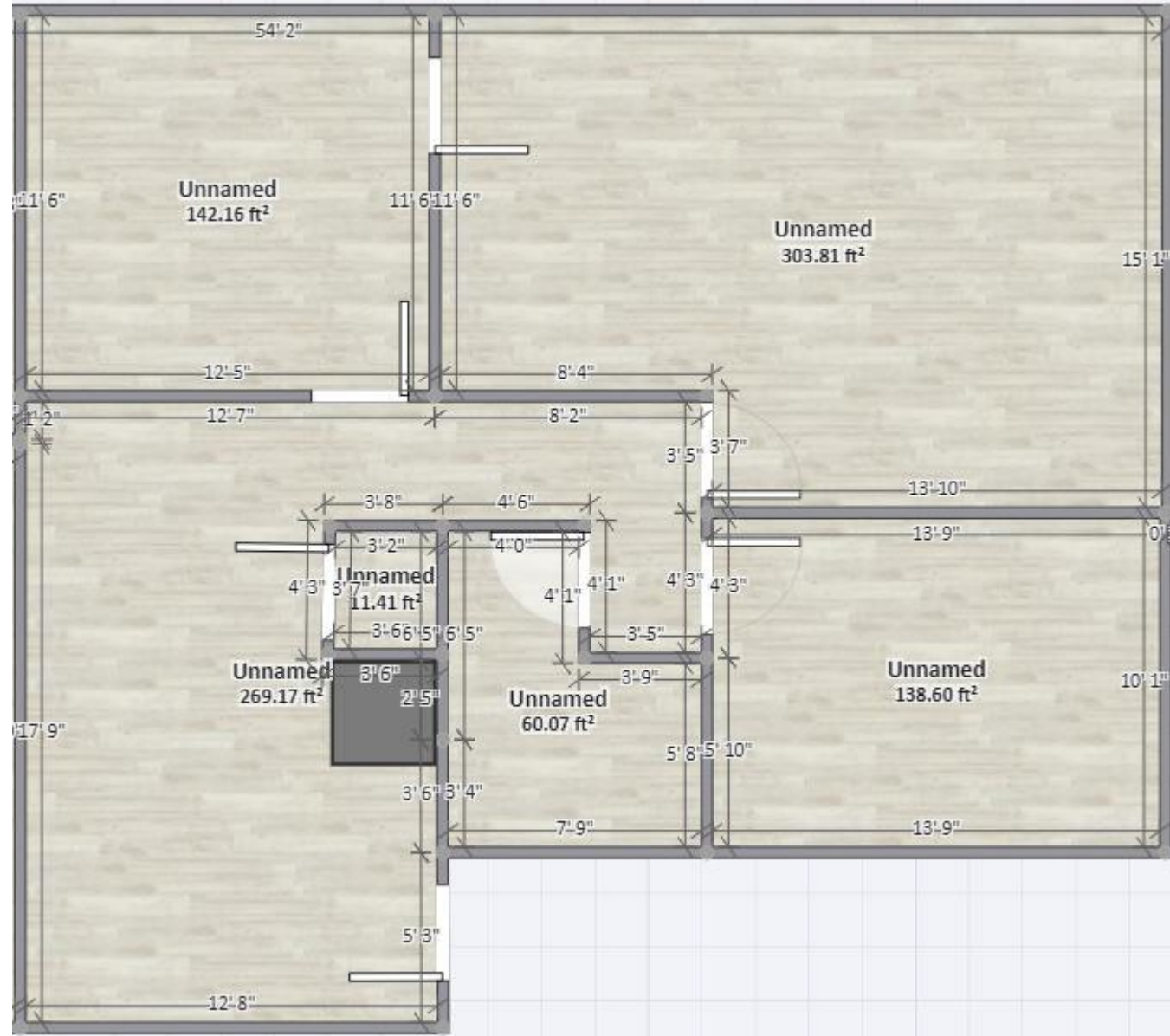
Suite 103 – 1,517sf
1st -Floor



5 Hillandale Ave, Stamford, CT 06902



Suite 200
 2nd Floor
 930 sf

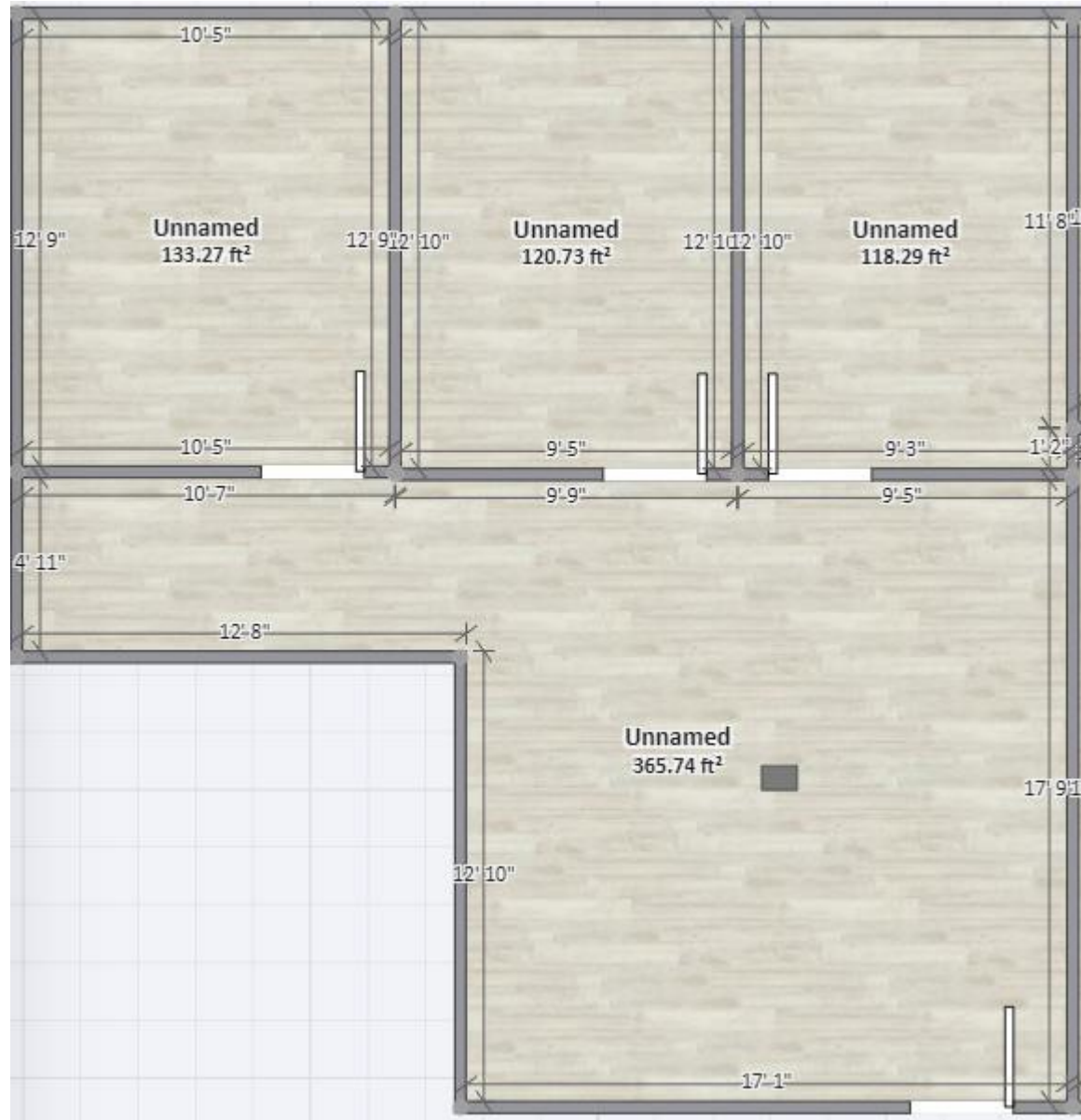


5 Hillandale Avenue, Stamford CT 06902



Suite 201
2nd Floor

742sq



5 Hillandale Avenue, Stamford CT 06902