

341 CENTRAL AVENUE, JERSEY CITY, NJ 07307

FOR LEASE

950 SF CORNER STOREFRONT WITH GLASS FRONTAGE

Between Linden Street & Menahan Street



SHLOMI BAGDADI
212.433.3355 x101
sb@tristatecr.com

FREDY BAGDADI
212.433.3355 x1003
freddy.b@tristatecr.com

TRI STATE COMMERCIAL®

PROPERTY SUMMARY

LOCATION

Located in The Heights neighborhood of Jersey City.

HIGHLIGHTS

- Newly Renovated
- 9 FT Ceilings
- Glass Frontage
- Basement for Storage
- Bathroom
- 30 FT of Frontage

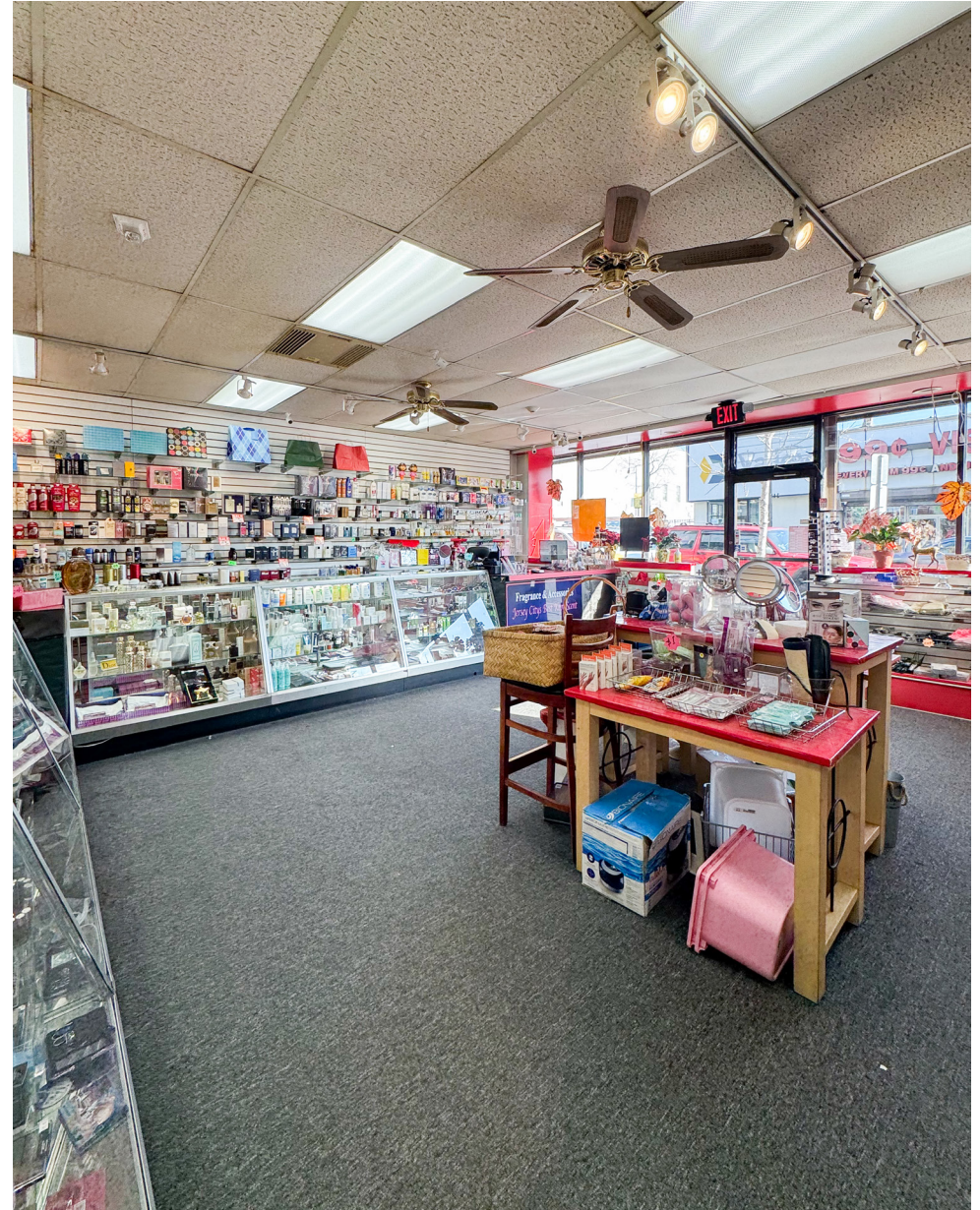
TRANSPORTATION

HBLR Light Rail at 2nd Street Station

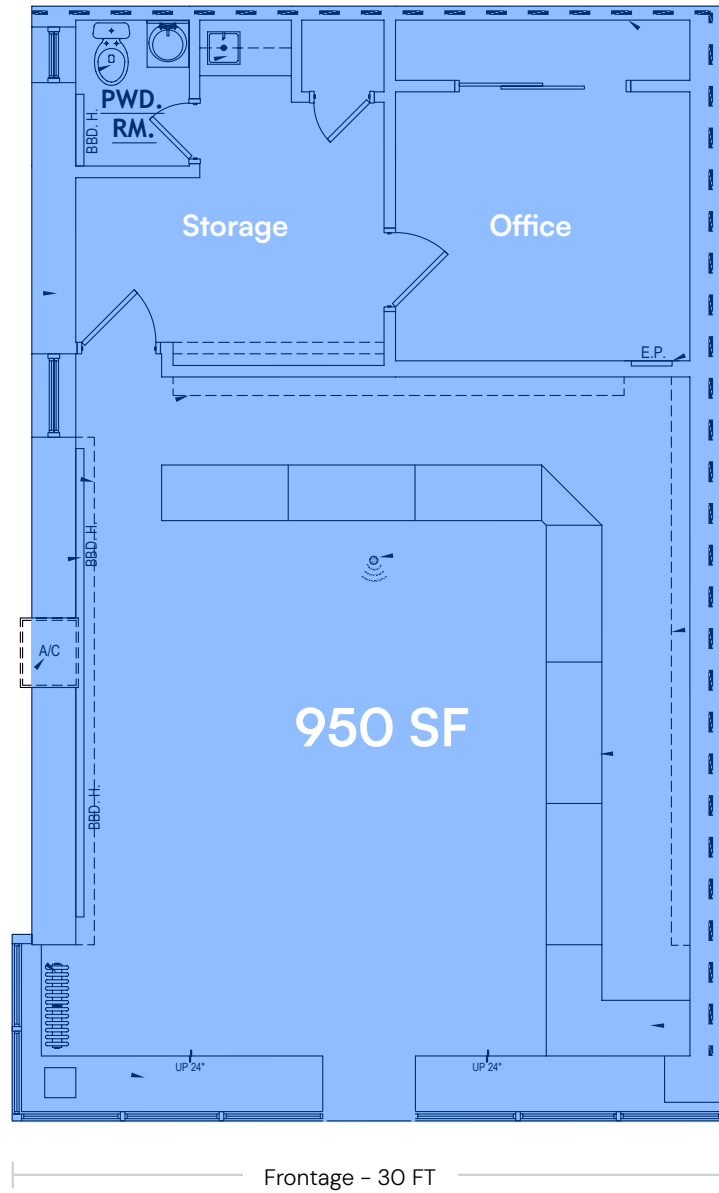
88 **119** **82** **87** Bus Lines

NEIGHBORS

Walgreens, Dunkin', Verizon, Griot Cafe, Subway, Heights Fitness, Burger King, Wonder Bagels, Fly E-Bike, Chase Bank, Dulce De Leche Bakery, Rainbow Shops, McDonald's, and more!

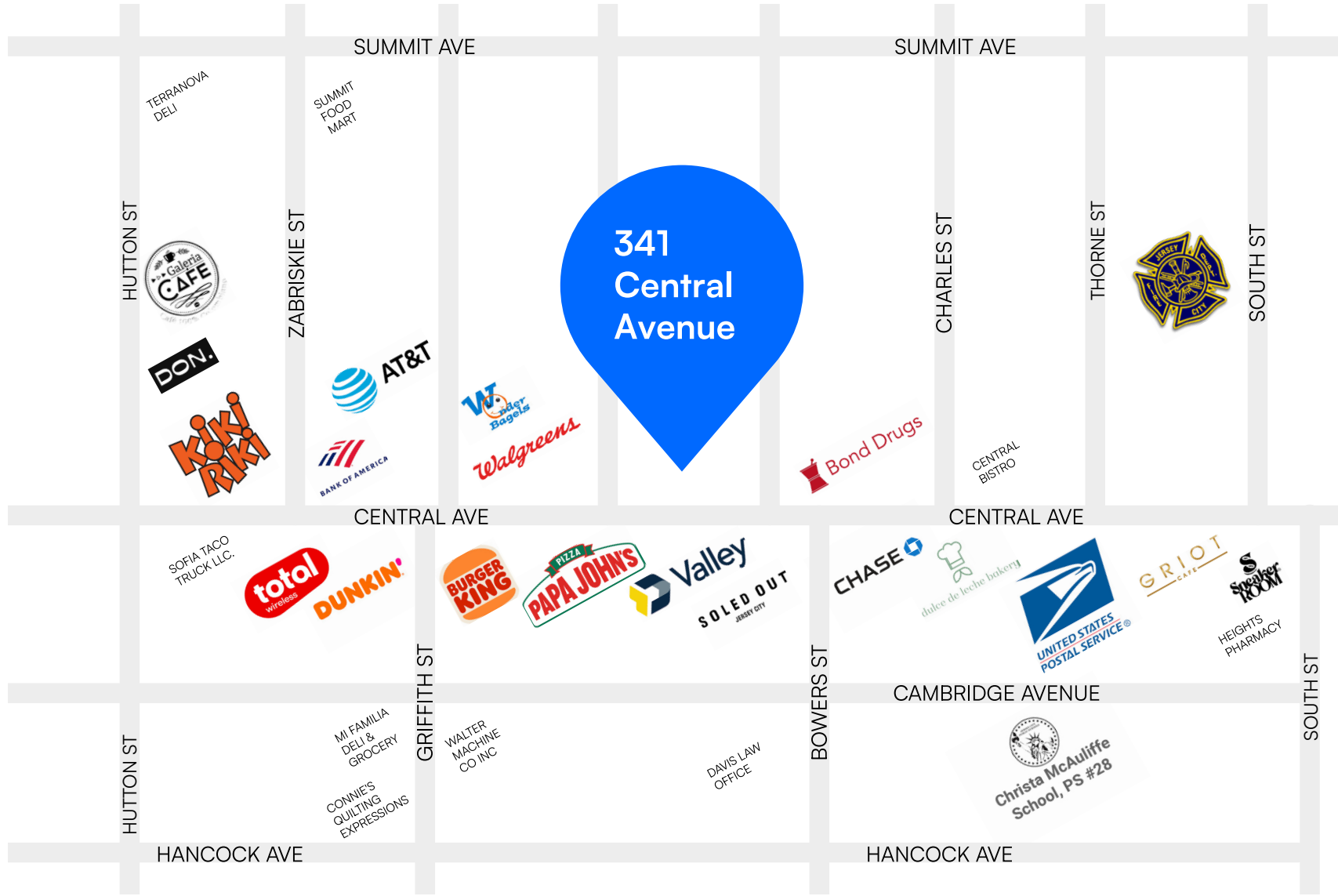


FLOOR PLANS



All square footages are approximate

RETAIL MAP



HBLR 2nd Street
▼

341 CENTRAL AVENUE, JERSEY CITY, NJ 07307

950 SF CORNER STOREFRONT WITH GLASS FRONTAGE

Between Linden Street & Menahan Street

For Pricing Call: **212.433.3355**

SHLOMI BAGDADI
212.433.3355 x101
sb@tristatecr.com

FREDY BAGDADI
212.433.3355 x1003
freddy.b@tristatecr.com

TSC.