

111 John Street

Nestled away from the hustle and bustle of Broadway, 111 John Street is a great space to work, especially with it being right near the South Street Seaport and a parking lot to boot. Views of the Brooklyn Bridge and Manhattan Bridge are a beautiful touch, and while the building traditionally hosted insurance related tenants, this is the up-and-coming place for all types of tenants including the future Omakase.



Leasing Agent

Mendy Braun
212-349-2154
Mbraun@braunmgmt.com

OWNER

111 John Realty Corp.

MANAGING AGENT

KF Braun Management LLC

LOBBY DESK

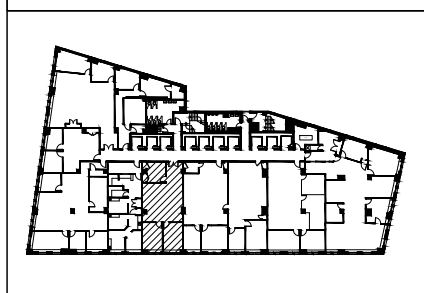
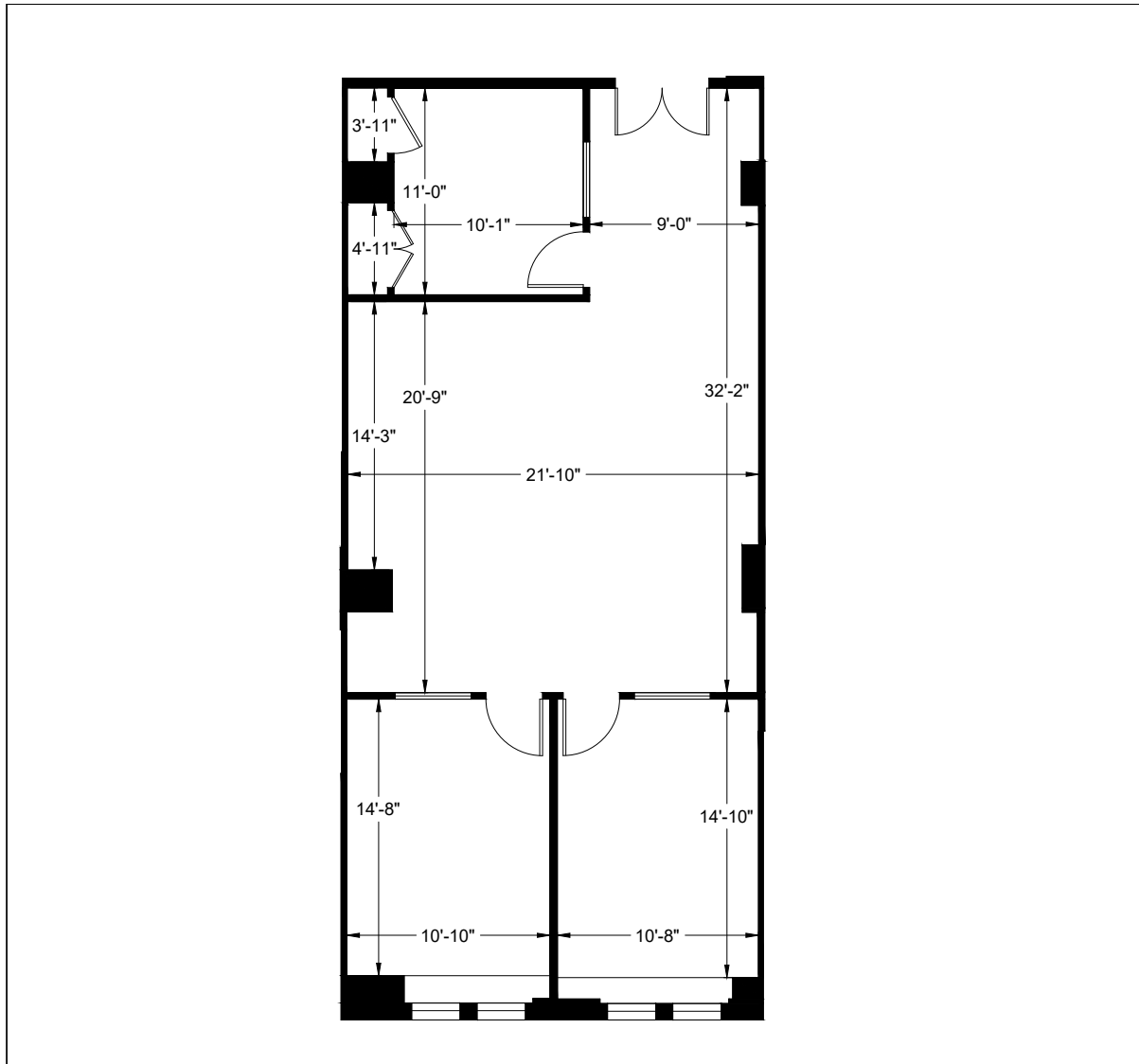
212-267-3830

05 Floor - Suite 545 111 JOHN ST

Suite	Sq. Ft.	Monthly Rent	Monthly Electricity	Electricity	Rent per Sq. Ft.
545	1,445	\$4,817		3.50	\$40

ESCALATION: 3% Per Annum In Lieu of Operating Expense. R.E. Tax Pass Along

NOTES: Previously 525



	<p>2DFLOORPLANS.COM 206-328-7410 600 NW Gilman Blvd. Suite E Issaquah, WA 98027</p>	<p>111 JOHN STREET SUITE 525 NEW YORK, N.Y.</p>	
--	---	--	--