



**4,100 SF BUILDING  
MEDICAL/RETAIL FOR LEASE**

**623-625 WEST MOUNT PLEASANT**

LIVINGSTON • NEW JERSEY

**SAMUEL BERNHAUT**  
Senior Vice President  
+1 201 712 5884  
[sam.bernhaut@cbre.com](mailto:sam.bernhaut@cbre.com)

**MARTA VILLA**  
Senior Vice President  
+1 973 715 8385  
[marta.villa@cbre.com](mailto:marta.villa@cbre.com)

**CBRE**



# PROPERTY HIGHLIGHTS

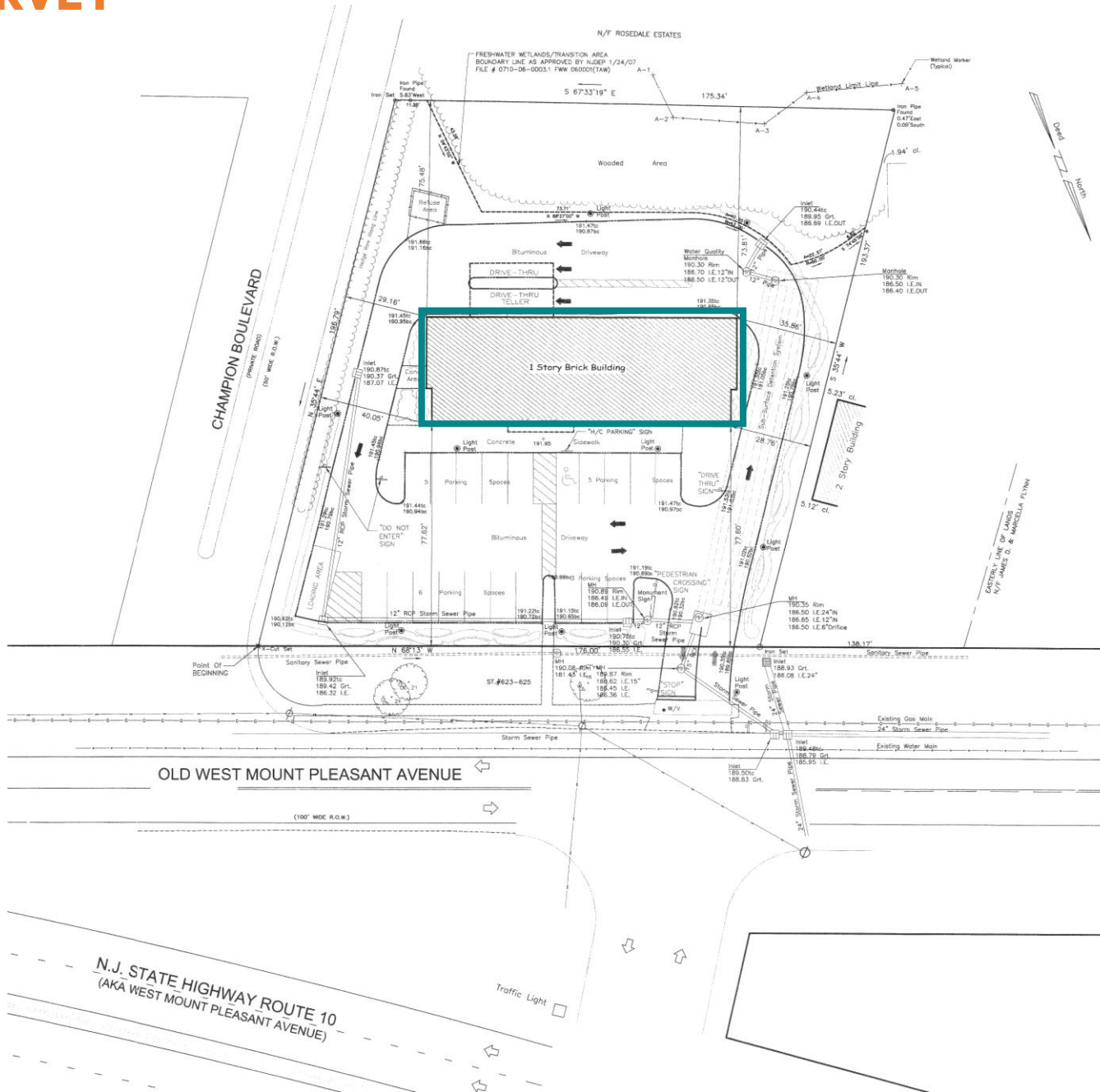
- **SIZE:** 4,100 SF
- **ASKING RENT:** Upon Request
- **COMMENTS**
- Former bank facility built to extensive specifications with ample power and HVAC.
- Located on the Route 10 Livingston & East Hanover Border
- Great retail or medical opportunity
- Free-standing building with 5+ per 1000 parking
- High ceilings
- 30,000 vpd

Virtual Tour 1

Virtual Tour 2



# SURVEY





# RETAIL MARKET AERIAL



	1 MILE	2 MILES	3 MILES
<b>POPULATION</b>	13,002	38,924	76,782
<b>EMPLOYEES</b>	4,642	20,766	46,606
<b>MEDIAN HOUSEHOLD INCOME</b>	\$189,467	\$193,777	\$176,530

© 2023 CBRE, Inc. All rights reserved. This information has been obtained from sources believed reliable but has not been verified for accuracy or completeness. You should conduct a careful, independent investigation of the property and verify all information. Any reliance on this information is solely at your own risk.

