

TROPHY SPACE

1152 15TH ST NW #920



3D Tour &
Photos!



AVAILABLE TERMS

- 8,700 SF
- Furniture negotiable
- Newly renovated
- \$38.50/SF
- Available now thru April 2027
- Rooftop terrace

HIGH END SUBLEASE

1152 15th St NW #920
Washington, DC 20005

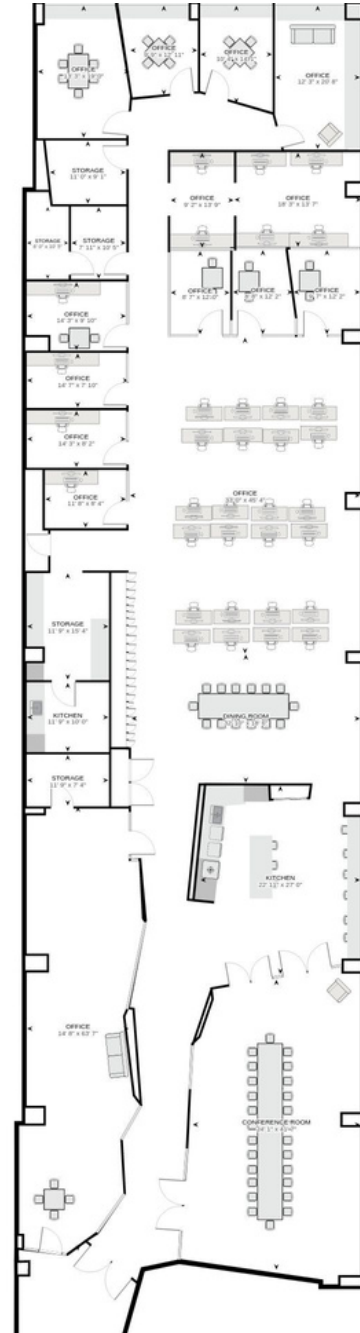


FLOOR PLAN

- 14 private offices
- 1 large conference room
- 24 work stations
- 5 storage areas
- 1 kitchen and kitchenette space
- 1 large dining area

PARKING DETAILS

- COVERED PARKING
- 275 SPACES AVAILABLE
- \$225/ MONTH



FOR MORE INFORMATION PLEASE CONTACT

Fletcher Gill, Managing Broker
(240)-462-6008

fletchergill@thegenaugroup.com

Victor Dambrosia, Partner
(202)-365-2373

vdambrosia@thegenaugroup.com

Emily Wright, Advisor
(919)-455-5999

emilywright@thegenaugroup.com

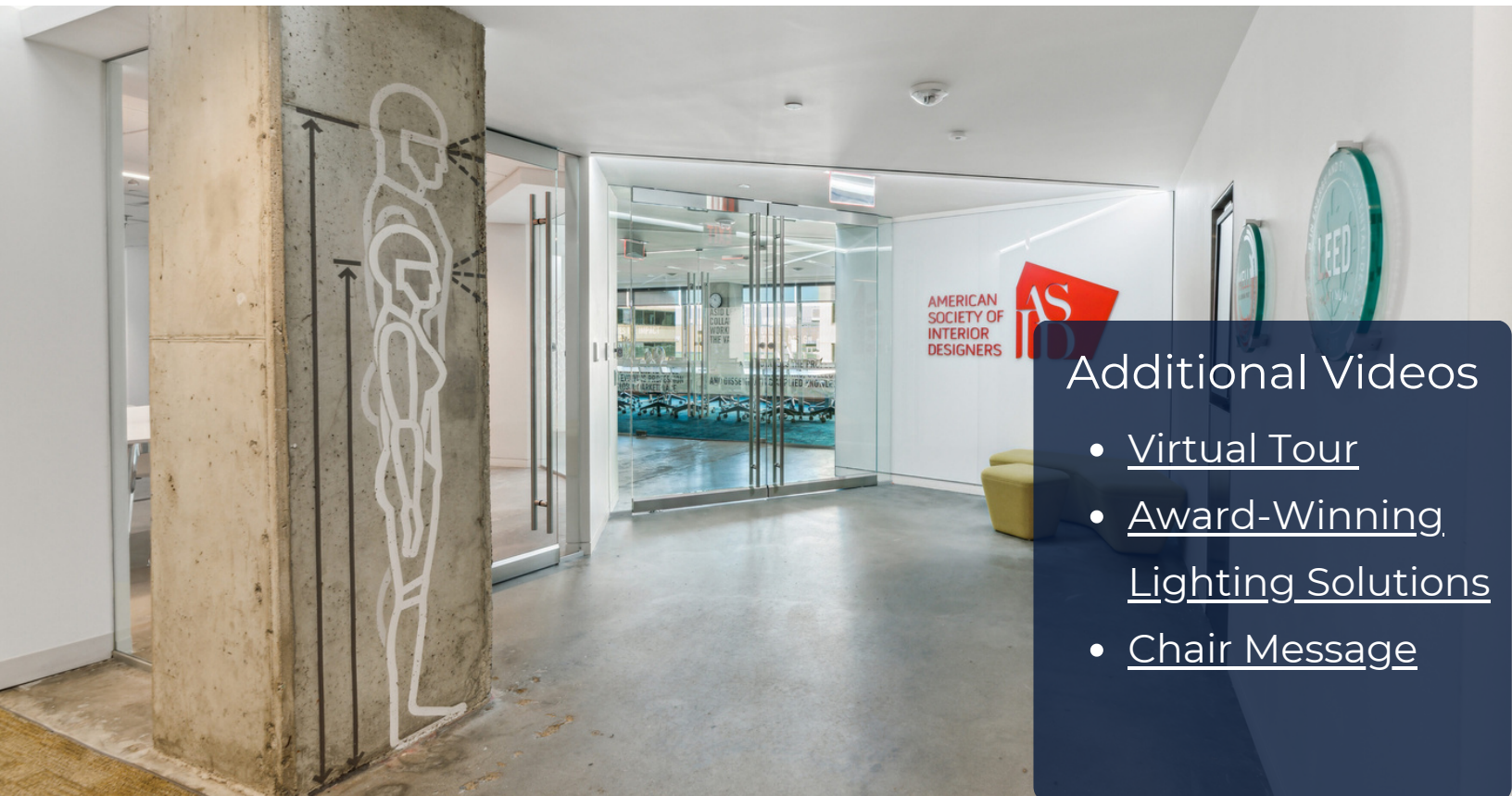
The above information was obtained from sources we deem to be reliable. However, we have not verified its accuracy, and make no warranties thereof. It is submitted subject to the possibility of errors and omissions, as well as prior leasing and change of price. Furthermore, it may be withdrawn with or without notice without penalty.

1152 15th St NW #920
Washington, DC 20005



SPACE HIGHLIGHTS

- Open floor plan layout
- LEED and WELL Platinum Certified
- State-of-the-art air and water filtration systems
- Large windows with plenty of natural light
- Productivity-enhancing lighting
- Wellness room
- Built-out-entrance
- Corner office with incredible view
- Large atrium lobby



Additional Videos

- [Virtual Tour](#)
- [Award-Winning Lighting Solutions](#)
- [Chair Message](#)

FOR MORE INFORMATION PLEASE CONTACT

Fletcher Gill, Managing Broker
(240)-462-6008

fletcherhill@thegenaugroup.com

Vic Dambrosia, Partner
(202)-365-2373

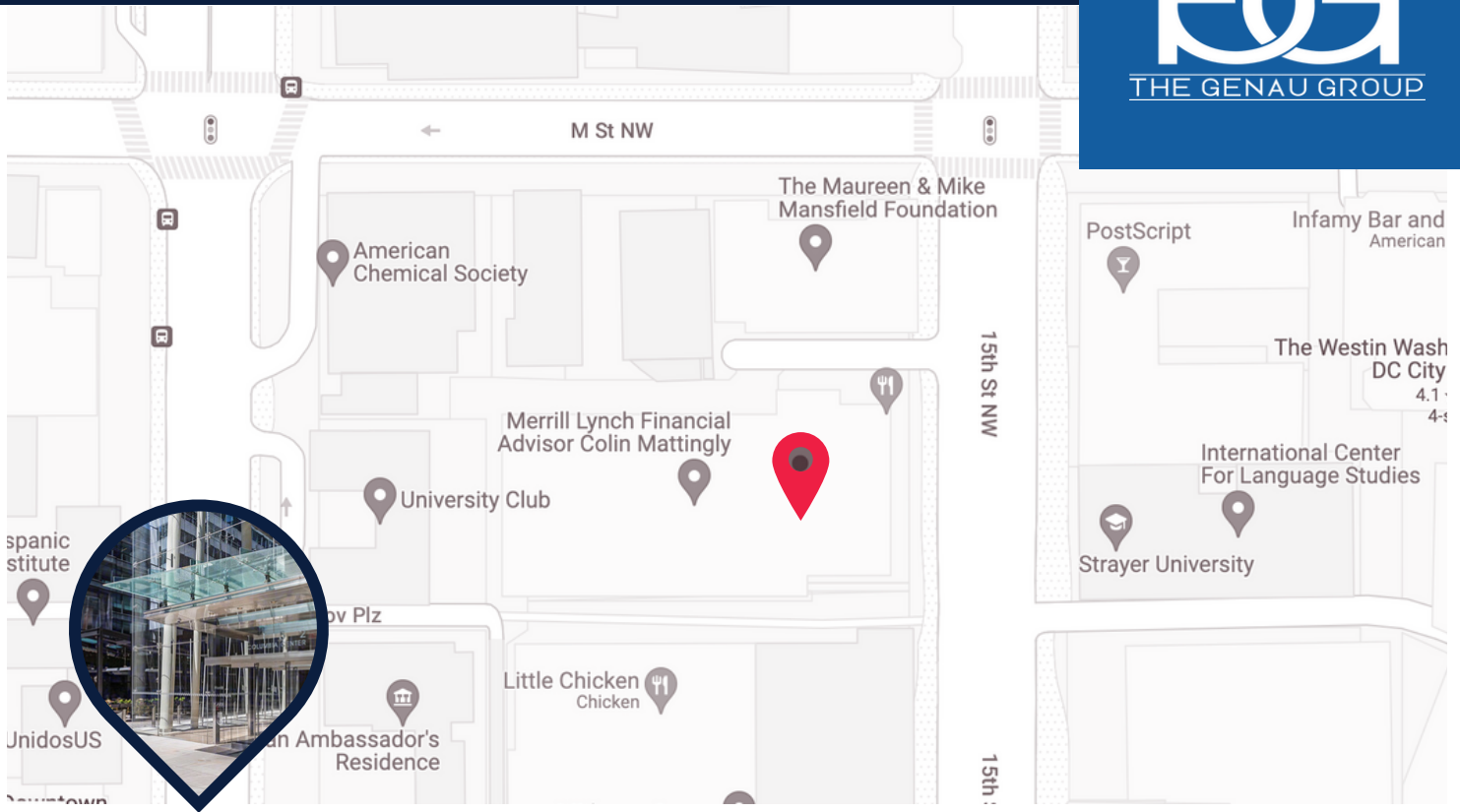
vdambrosia@thegenaugroup.com

Emily Wright, Advisor
(919)-455-5999

emilywright@thegenaugroup.com

The above information was obtained from sources we deem to be reliable. However, we have not verified its accuracy, and make no warranties thereof. It is submitted subject to the possibility of errors and omissions, as well as prior leasing and change of price. Furthermore, it may be withdrawn with or without notice without penalty.

1152 15th St NW #920
Washington, DC 20005



NEARBY AMENITIES



PARKING 275 Available (Covered)

COMMUTER RAIL 5 minute drive to L'Enfant Commuter Rail
(Manassas, Fredericksburg Line)

AIRPORT 12 min drive to Ronald Reagan Washington
National Airport

METRO 7 minute walk to McPherson Square Transit Stop
(Blue, Orange, Silver lines)

WALKING SCORE Walker's Paradise (98)

TRANSIT SCORE Rider's Paradise (100)

The above information was obtained from sources we deem to be reliable. However, we have not verified its accuracy, and make no warranties thereof. It is submitted subject to the possibility of errors and omissions, as well as prior leasing and change of price. Furthermore, it may be withdrawn with or without notice without penalty.

1152 15th St NW #920
Washington, DC 20005



The above information was obtained from sources we deem to be reliable. However, we have not verified its accuracy, and make no warranties thereof. It is submitted subject to the possibility of errors and omissions, as well as prior leasing and change of price. Furthermore, it may be withdrawn with or without notice without penalty.

1152 15th St NW #920
Washington, DC 20005



The above information was obtained from sources we deem to be reliable. However, we have not verified its accuracy, and make no warranties thereof. It is submitted subject to the possibility of errors and omissions, as well as prior leasing and change of price. Furthermore, it may be withdrawn with or without notice without penalty.

1152 15th St NW #920
Washington, DC 20005



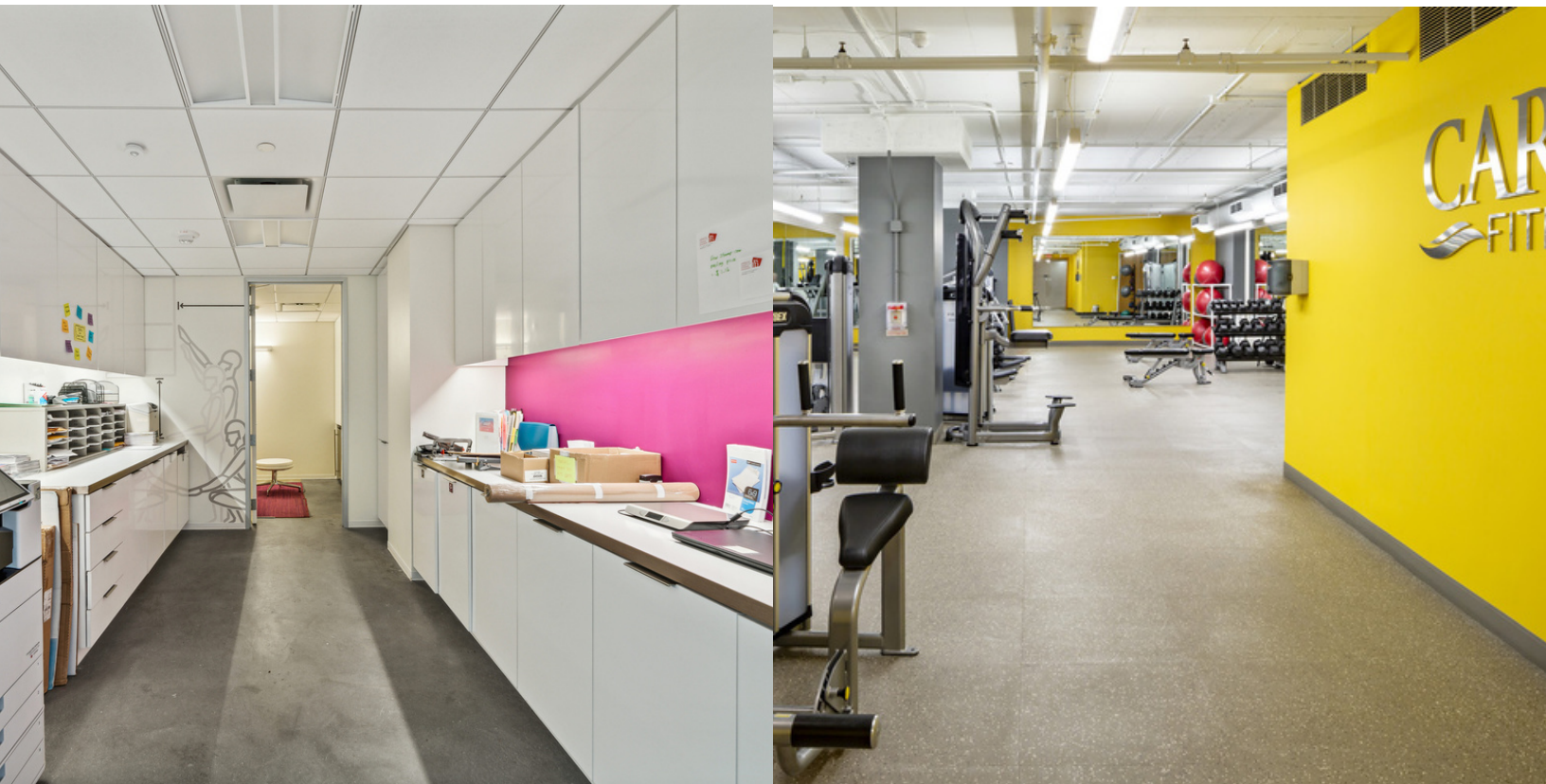
The above information was obtained from sources we deem to be reliable. However, we have not verified its accuracy, and make no warranties thereof. It is submitted subject to the possibility of errors and omissions, as well as prior leasing and change of price. Furthermore, it may be withdrawn with or without notice without penalty.

1152 15th St NW #920
Washington, DC 20005



The above information was obtained from sources we deem to be reliable. However, we have not verified its accuracy, and make no warranties thereof. It is submitted subject to the possibility of errors and omissions, as well as prior leasing and change of price. Furthermore, it may be withdrawn with or without notice without penalty.

1152 15th St NW #920
Washington, DC 20005



The above information was obtained from sources we deem to be reliable. However, we have not verified its accuracy, and make no warranties thereof. It is submitted subject to the possibility of errors and omissions, as well as prior leasing and change of price. Furthermore, it may be withdrawn with or without notice without penalty.

1152 15th St NW #920
Washington, DC 20005



PLEASE **CONTACT** THE SUBLEASING TEAM FOR INFORMATION



Fletcher Gill, Managing Broker

Phone: (202)-735-5382

fletcherhill@thegenaugroup.com



Victor Dambrosia, Partner

Phone: (202)-365-2373

vdambrosia@thegenaugroup.com



Emily Wright, Director

Phone: (202)-798-5028

emilywright@thegenaugroup.com