

MEDICAL OFFICE SPACE NEAR HOSPITAL

1900 Nebraska Ave. Suite 1, Fort Pierce, FL 34950



FOR LEASE | \$5,000/mo.

**JEREMIAH BARON
& CO**

COMMERCIAL REAL ESTATE

500 SE Osceola Street
Stuart FL, 34994
www.commercialrealestatellc.com

Stephen Peregoy
772.286.5744 Office
561.420.9615 Mobile
speregoy@commercialrealestatellc.com

PROPERTY OVERVIEW

- Excellently maintained medical office condo located in the Lawnwood Physicians Center complex.
- The interior spans approximately 2,100 sf and comes fully built out for a medical practice.
- Unit boasts spacious interior which includes an ample waiting area, reception, multiple exam rooms, office suites, a kitchen/breakroom, and two restrooms.
- Great end cap unit sits within walking distance to the Lawnwood Regional Hospital and many other healthcare-related services.
- Quick access to US-1 and other major roadways.



LEASE RATE	\$5,000/mo. Modified Gross
SPACE AVAILABLE	2,100 SF (Unit 1)
BUILDING TYPE	Medical Condo
FRONTAGE	188'
TRAFFIC COUNT	2,700 ADT
YEAR BUILT	1984
CONSTRUCTION TYPE	CBS
PARKING SPACE	Ample
ZONING	C-1 (FP)
LAND USE	OP
PARCEL ID	2416-606-0001-000-0

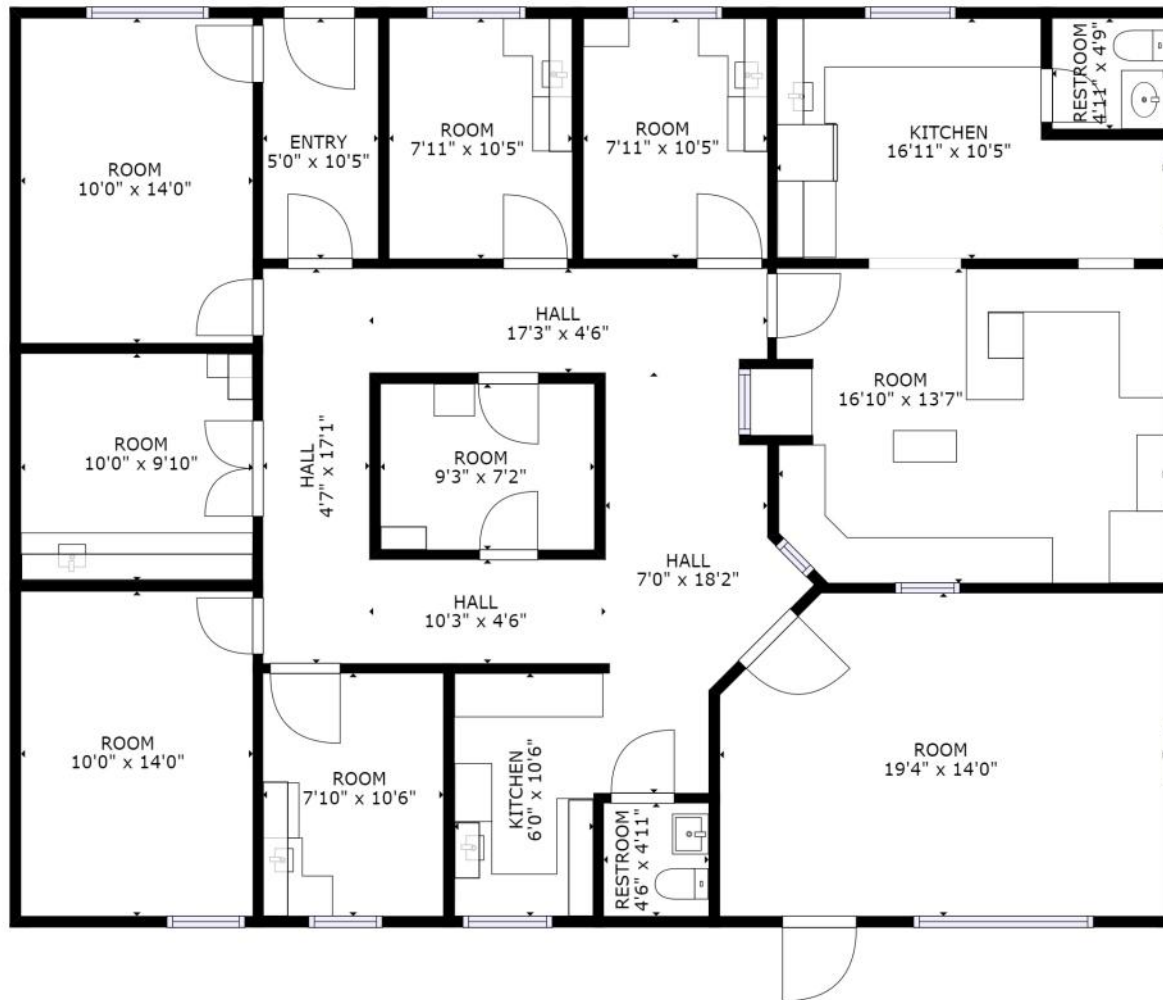
NO WARRANTY OR REPRESENTATION, EXPRESS OR IMPLIED, IS MADE AS TO THE ACCURACY OF THE INFORMATION CONTAINED HEREIN, AND THE SAME IS SUBMITTED SUBJECT TO ERRORS, OMISSIONS, CHANGE OF PRICE, RENTAL OR OTHER CONDITIONS, PRIOR SALE, LEASE OR FINANCING, OR WITHDRAWAL WITHOUT NOTICE, AND OF ANY SPECIAL LISTING CONDITIONS IMPOSED BY OUR PRINCIPALS NO WARRANTIES OR REPRESENTATIONS ARE MADE AS TO THE CONDITION OF THE PROPERTY OR ANY HAZARDS CONTAINED THEREIN ARE ANY TO BE IMPLIED.

**JEREMIAH BARON
& CO**
COMMERCIAL REAL ESTATE

500 SE Osceola Street
Stuart FL, 34994
www.commercialrealestatellc.com

Stephen Peregoy
772.286.5744 Office
561.420.9615 Mobile
speregoy@commercialrealestatellc.com

FLOOR PLAN



Dimensions may differ from actual unit

**JEREMIAH BARON
& CO**
COMMERCIAL REAL ESTATE

500 SE Osceola Street
Stuart FL, 34994
www.commercialrealestatellc.com

Stephen Peregoy
772.286.5744 Office
561.420.9615 Mobile
speregoy@commercialrealestatellc.com

AERIAL VIEW



**JEREMIAH BARON
& CO**

COMMERCIAL REAL ESTATE

500 SE Osceola Street
Stuart FL, 34994
www.commercialrealestatellc.com

Stephen Peregoy
772.286.5744 Office
561.420.9615 Mobile
speregoy@commercialrealestatellc.com

DEMOGRAPHICS

Population	1 mile	5 miles	10 miles
2020 Population	13,879	71,429	187,635
2024 Population	13,675	80,363	208,732
2029 Population Projection	16,297	97,488	252,085
Annual Growth 2020-2024	-0.4%	3.1%	2.8%
Annual Growth 2024-2029	3.8%	4.3%	4.2%
Median Age	34.8	40.8	45.5
Bachelor's Degree or Higher	10%	19%	23%
U.S. Armed Forces	6	96	231

Income	1 mile	5 miles	10 miles
Avg Household Income	\$51,084	\$61,107	\$71,312
Median Household Income	\$42,889	\$45,274	\$55,741
< \$25,000	1,217	7,916	16,424
\$25,000 - 50,000	1,343	8,548	20,577
\$50,000 - 75,000	1,205	6,061	17,566
\$75,000 - 100,000	350	3,158	10,612
\$100,000 - 125,000	239	2,728	8,661
\$125,000 - 150,000	70	698	3,040
\$150,000 - 200,000	99	1,317	4,529
\$200,000+	36	659	2,539

**JEREMIAH BARON
& CO**

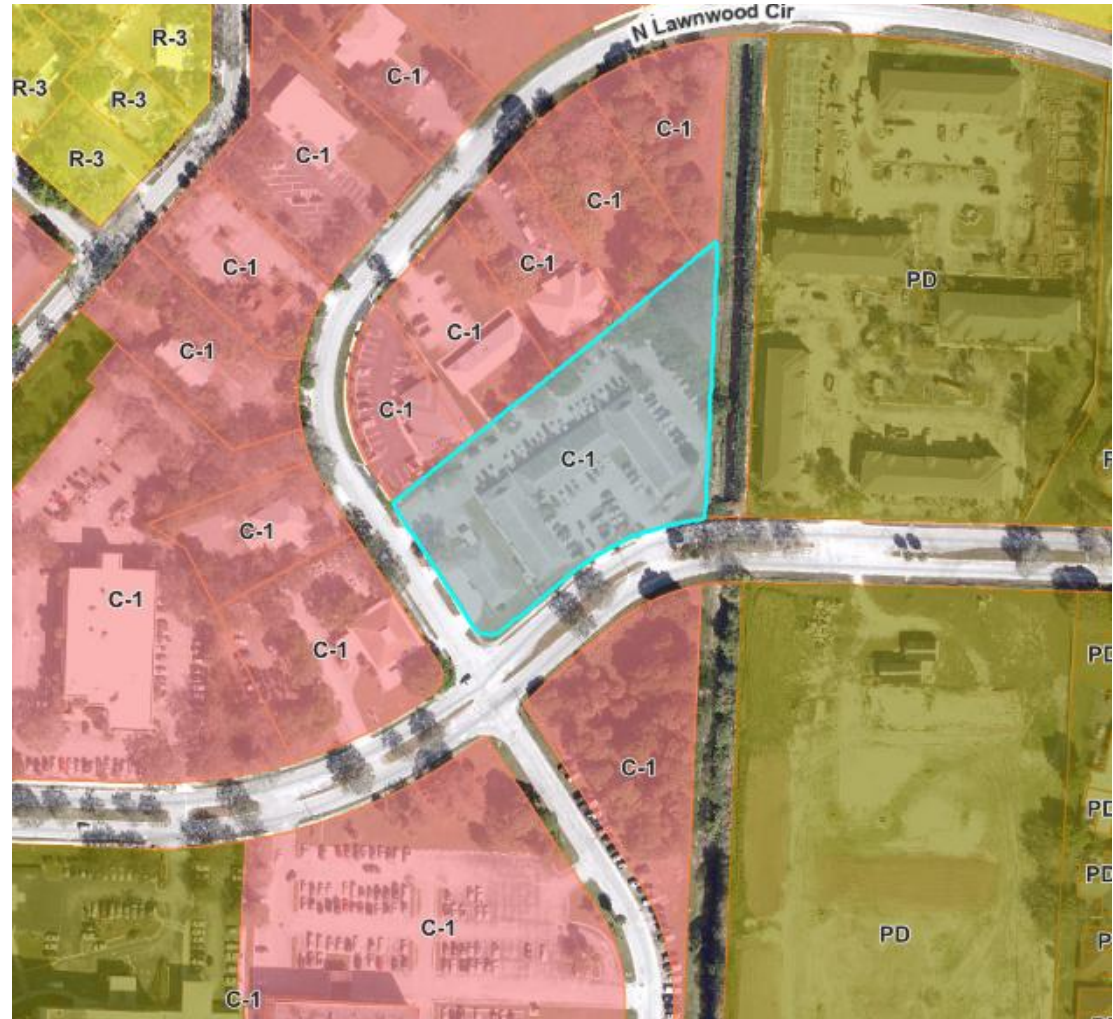
COMMERCIAL REAL ESTATE

500 SE Osceola Street
Stuart FL, 34994
www.commercialrealestatellc.com

Stephen Peregoy
772.286.5744 Office
561.420.9615 Mobile
speregoy@commercialrealestatellc.com

ZONING INFORMATION

Permitted Uses	C-1
-Brew Pub	P
-Coffee Shop	P
-Neighborhood Bistro	P
-Neighborhood Cafe	P
-Restaurants, Fast Food	C
-Restaurant and Bar	P
-Wine/Cigar Bar	C
-Administrative, Professional, General, Medical Office	P
-Day Labor Employment Agency	P
-Medical and Dental Clinic	P
-Television and Radio Studios	P
-Neighborhood Commercial Services	P
-Personal Improvement Service	P



**JEREMIAH BARON
& CO**
COMMERCIAL REAL ESTATE

500 SE Osceola Street
Stuart FL, 34994
www.commercialrealestatellc.com

Stephen Peregoy
772.286.5744 Office
561.420.9615 Mobile
speregoy@commercialrealestatellc.com

TRADE AREA MAP



**JEREMIAH BARON
& CO**

COMMERCIAL REAL ESTATE

500 SE Osceola Street
Stuart FL, 34994
www.commercialrealestatellc.com

Stephen Peregoy
772.286.5744 Office
561.420.9615 Mobile
speregoy@commercialrealestatellc.com