

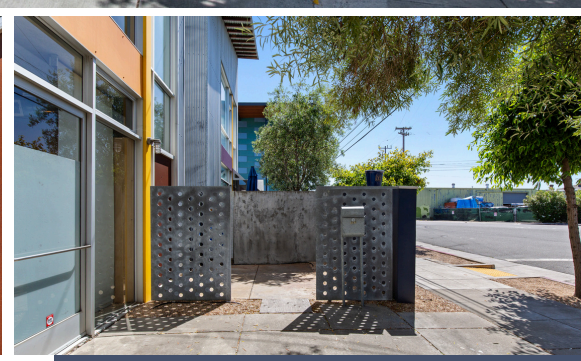
FOR SALE

755 Folger Avenue, Berkeley, CA 94710

PRICE
\$1,450,000



SCAN OR CLICK TO VIEW
VIRTUAL TOUR



PROPERTY HIGHLIGHTS

- Contemporary mixed-use building with a striking blend of glass, stone, wood, and concrete.
- Separate commercial and residential units, offering great live/work potential.
- Upper level: 2 bedrooms and 1 bathroom with additional loft area.
- Lower level: Open, versatile space ideal for office, studio, showroom, or other creative uses.
- Full HVAC throughout.
- Residential unit has in-unit laundry with washer and dryer included.
- Each unit has separately metered utilities.
- Two (2) dedicated parking spaces.

Building Size: 2,630 SF
(per public record)

Parcel Size: 1,940 SF
(per public record)

APN: 53-1635-10-1

Year Built: 2002

Zoning: MUII

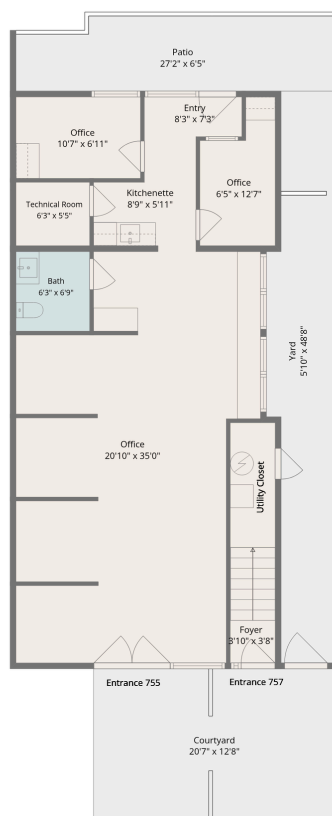
Ownership Interest: Fee Simple

755 FOLGER AVE

COMMERCIAL SPACE



FLOOR PLAN

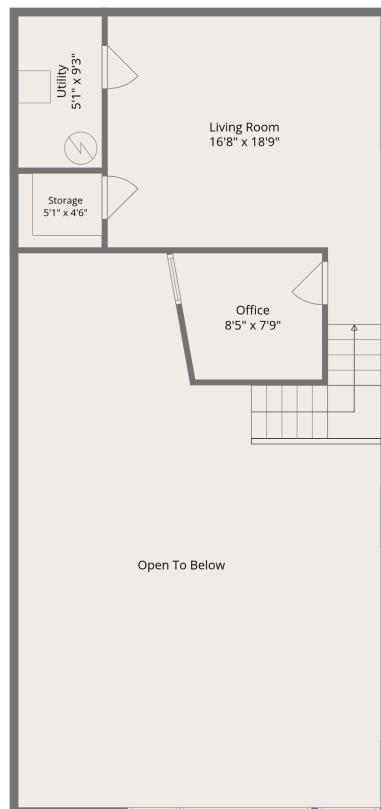
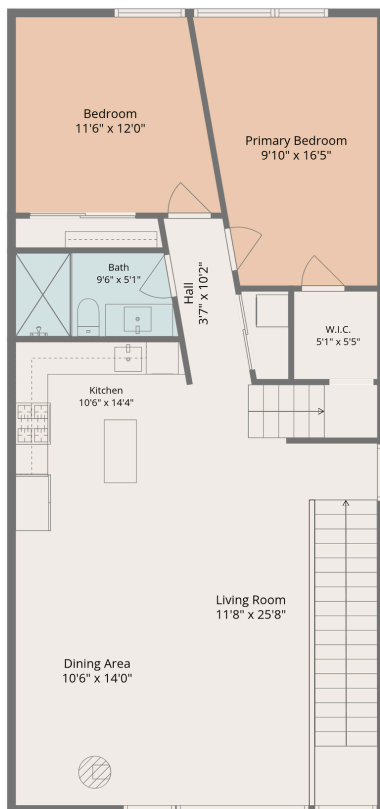


757 FOLGER AVE


RESIDENTIAL SPACE

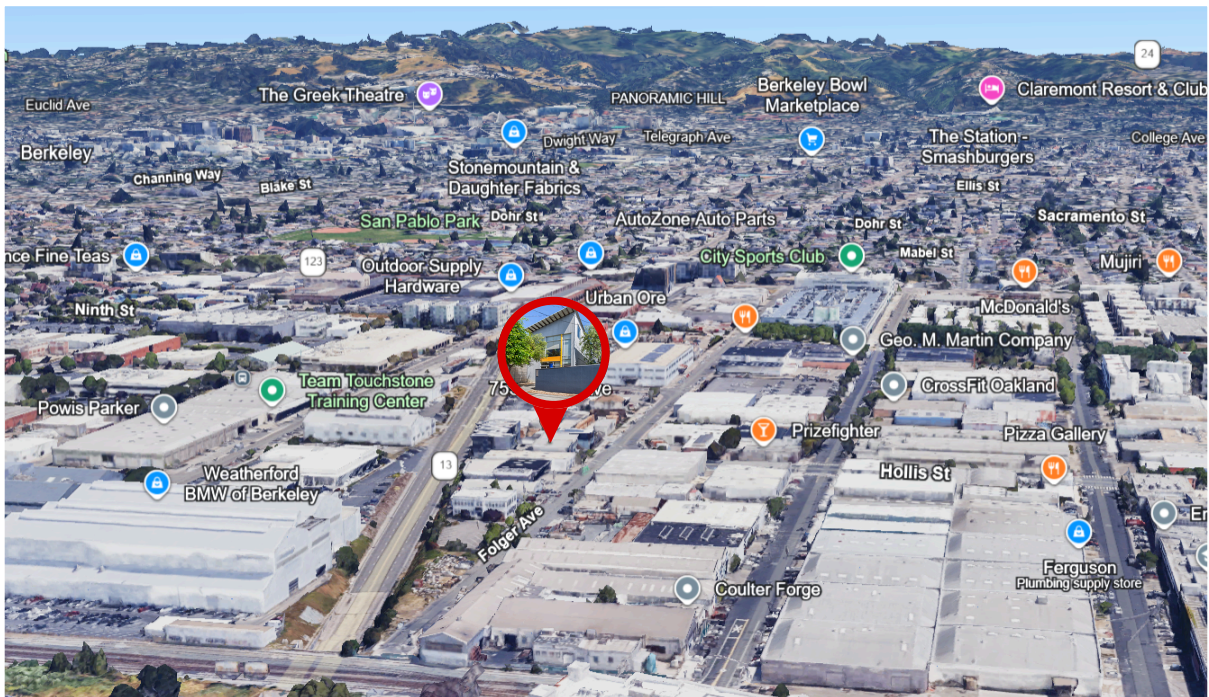
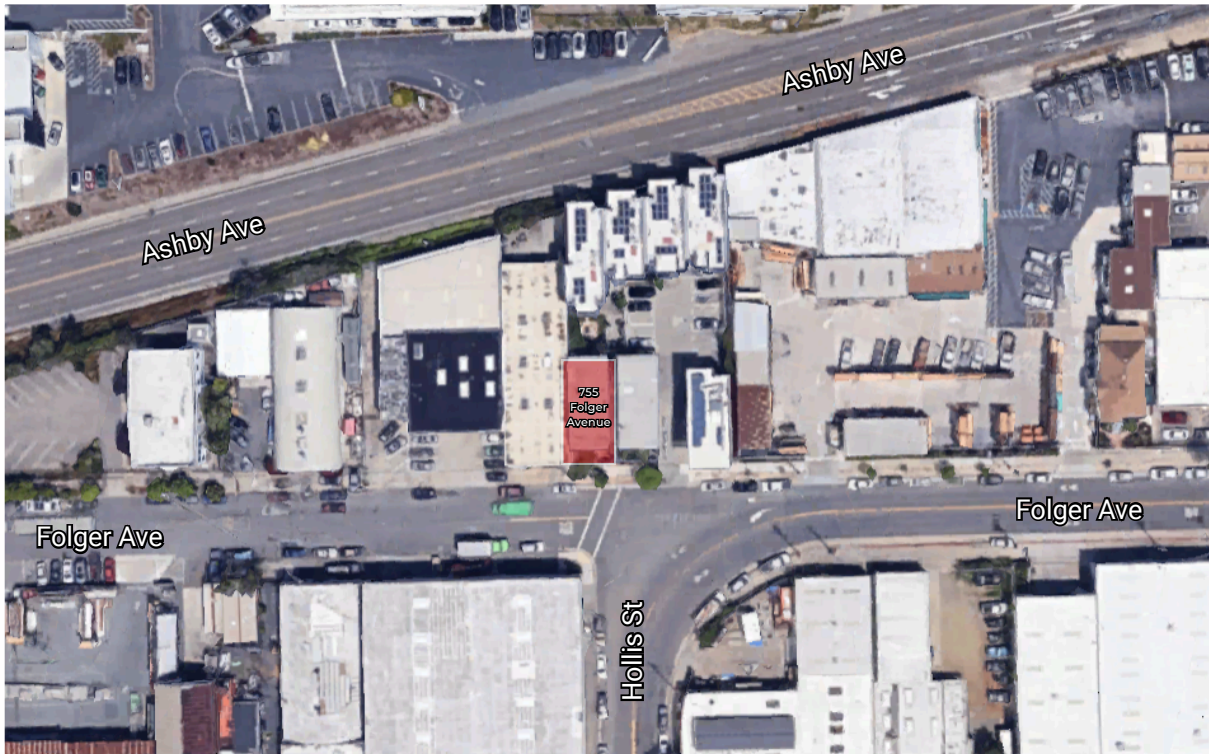


FLOOR PLAN



MAPS & LOCATION

 755 Folger Avenue, Berkeley, CA 94710



CONTACT US NOW



Colby Katz

(510) 450-1420

ckatz@mrecommercial.com

LIC# 01949015



Francis Griffin

(510) 450-1405

fgriffin@mrecommercial.com

LIC# 02016713